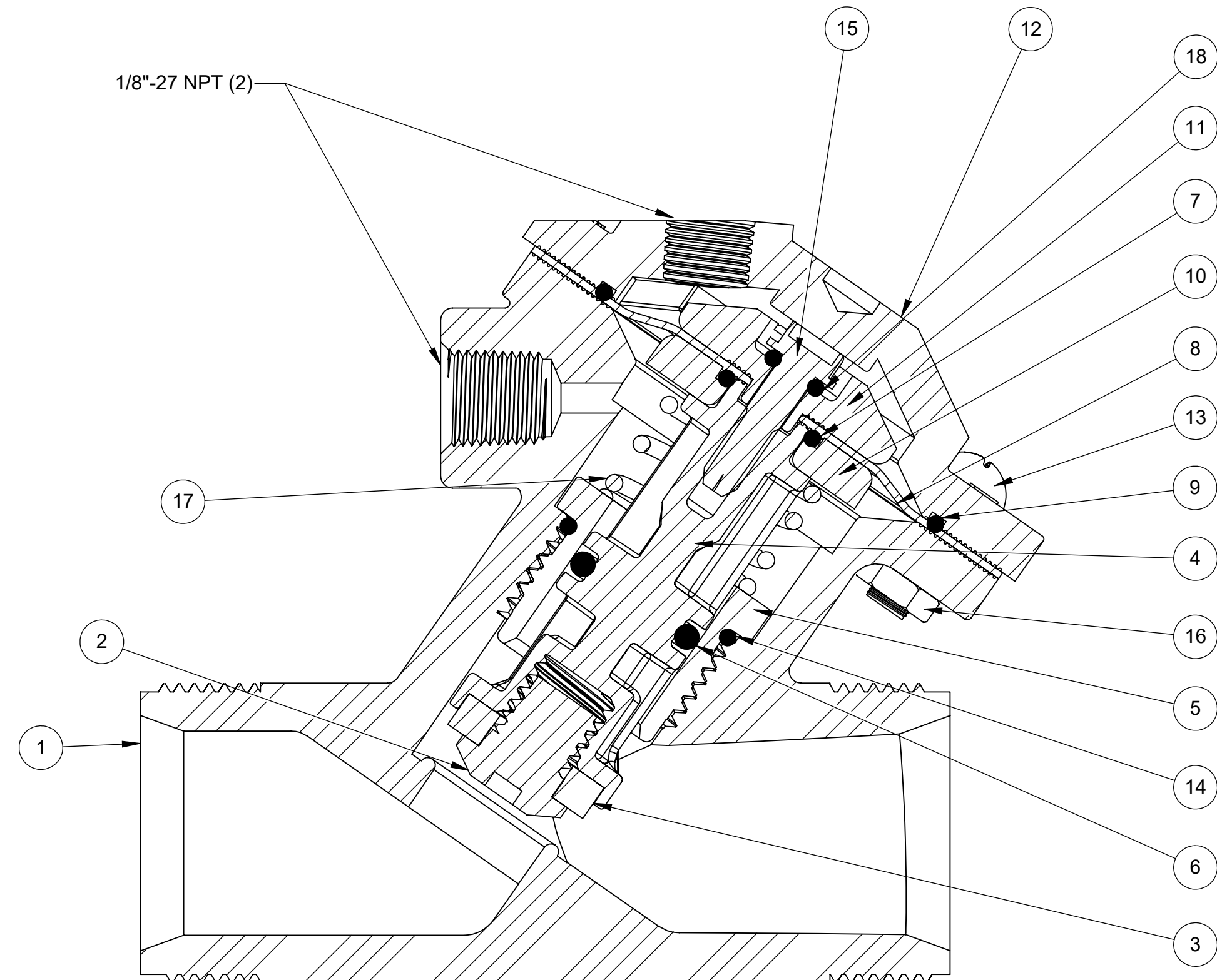


ASSEMBLY TOOLS	
DESCRIPTION	PART NO.
FOR INSTALLATION & REMOVAL OF SHAFT GUIDE (ITEM #5)	1074989 (520-Z)
TO HOLD SHAFT (ITEM #4) DURING ASSEMBLY/DISASSEMBLY	1077834

TORQUE TABLE		
ITEM #	DESCRIPTION	TORQUED TO (+/- 10%)
2	SCREW, PLATE, DISC	8 IN-LB
5	GUIDE, SHAFT	32 IN-LB
13 & 16	CA P SCREW & NUT	30 IN-LB
15	SCREW, CUTTING	15 IN-LB

REVISIONS				
ECN	REV.	DESCRIPTION	DATE	APP'D
1001	O	UPDATE TO AQ-MATIC & VERIFIED PART NUMBERS	01/16/17	MG
1507	P	LOGO UPDATE, REMOVE BR FROM DRW #, FIX MINOR ERRORS, ADD TORQUE TABLE	05/02/19	KJB
1964	R	CATALOG SHEET UPDATE / REPLACE SHAFT 1077854	11/1/21	TRK/SMH

NORMALLY OPEN W/ SPRING ASSIST				
ITEM NO.	DESCRIPTION		PART NUMBER	QTY.
1	BODY, 520, VALVE	NORYL	1074943	1
2	SCREW, DISC, PLATE, 520	NORYL	1077903	1
3	DISC	EPDM	1074966 (520-J)	1
		BUTYL	1074967 (520-JJ)	
		FKM	1074968 (520-DJK)	
4	SHAFT, 520, NORMALLY OPEN	NORYL	1077854	1
5	GUIDE, SHAFT, 520, NORYL	NORYL	1074964 (520-GN)	1
6	O-RING, 2-111	EPDM	1071727 (ORE-111)	1
		BUTYL	1071764 (ORJ-111)	
		FKM	1071799 (ORV-111)	
7	O-RING 2-112	EPDM	1071717 (ORE-112)	1
		FKM	1071787 (ORV-112)	
8	DIAPHRAGM	BUNA	1078035 (520-FB)	1
		FKM	1078047 (520-FV)	
9	O-RING, 2-030	EPDM	3015801 (ORE-030)	1
10	PLATE, DIAPHRAGM, 520,LWR	NORYL	1077858	1
11	PLATE, DIAPHRAGM, 520, UPPER	NORYL	1077856	1
12	CAP, VALVE 520	NORYL	1074948 (520-BOK)	1
13	SCREW, 10-32 X 5/8",RND HD	SS	1072379 (SCS-0094)	6
14	O-RING, 2-018	EPDM	1071720 (ORE-018)	1
		BUTYL	1071762 (ORJ-018)	
		FKM	1071790 (ORV-018)	
15	SCREW, CUTTING 1/4" TYPE BT	SS	1077781	1
16	NUT, HEX, 10-32, 18-8SS, 5/16	SS	1071647 (NUS-0005)	6
17	SPRING, COMPRESSION	SS	1074982	1
18	O-RING, 2-007	FKM	41122-01 (ORV-007)	1



1070140 (K520-X201-14000)
NORMALLY OPEN W/ SPRING ASSIST OPEN (STANDARD)

REPAIR PARTS KIT		
DESCRIPTION	PART NO.	
DIAPHRAGM & SEAL KIT	1081784 (520-RAN) E.P.D.M. INCLUDES DIAPHRAGM 1078035	1081783 (520-RAJN) BUTYL INCLUDES DIAPHRAGM 1078035
CONSISTS OF ITEM NO'S 3,6,7,8,9,14,18	1081787 (520-RAVN) FKM INCLUDES DIAPHRAGM 1078035	1081786 (520-RAVFN) FKM INCLUDES DIAPHRAGM 1078047
INT. PART KIT (NORM. OPEN) CONSISTS OF ITEM NO'S 2,4,5,10,11,15	1079600 (K520-RFN)	

THE COMPONENT, PART, OR ASSEMBLY DESCRIBED IN THIS DOCUMENT MUST COMPLY WITH THE EU (EUROPEAN UNION) DIRECTIVE: RoHS DIRECTIVE 2011/65/EC.

THIS DOCUMENT IS SOLELY THE PROPERTY OF AQ-MATIC REPRODUCTION, USE DISCLOSURE, OR TRANSMISSION OF THIS DOCUMENT OR DETAILS CONTAINED HEREIN, IN PART OR IN WHOLE, IS PROHIBITED WITHOUT THE WRITTEN CONSENT OF AQ-MATIC ENGINEERING. THIS DOCUMENT AND ANY COPIES SHALL BE RETURNED TO AQ-MATIC UPON WRITTEN REQUEST.

DO NOT SCALE DRAWING. DIMS. ARE IN INCHES [mm] INTERPRET DIMS AND TOLERANCES PER ASME Y14.5M - 1994 UNLESS OTHERWISE SPECIFIED:
 *CORNER FILLETS R.005-.020 [0.127-.508]
 TOLERANCES:
 ANGLES: ± 1°
 1 PLACE .X: ± .100 [2.54]
 2 PLACE .XX: ± .010 [0.25]
 3 PLACE .XXX: ± .005 [0.13]

THIRD ANGLE PROJECTION	
APPROVALS	DATE
DRAWN TRK	11/1/21
CHECKED BY	
APPROVED	

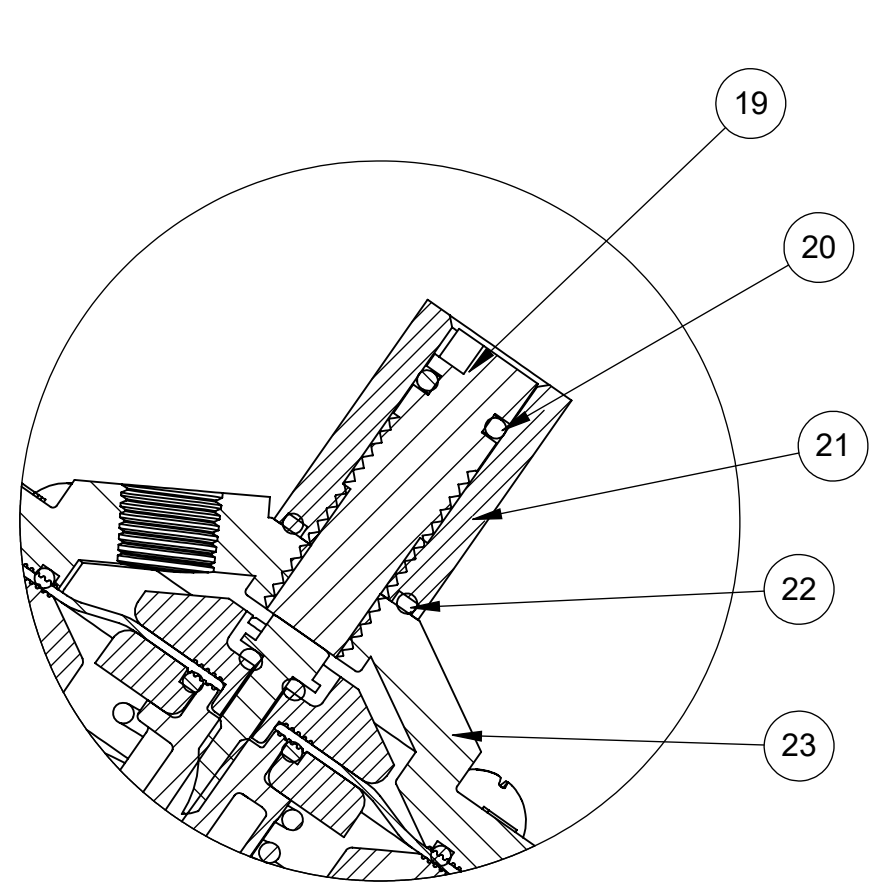
CATALOG SHEET, 520, VALVE
 STANDARD MODEL

SIZE C DWG NO. 1078139 REV. R

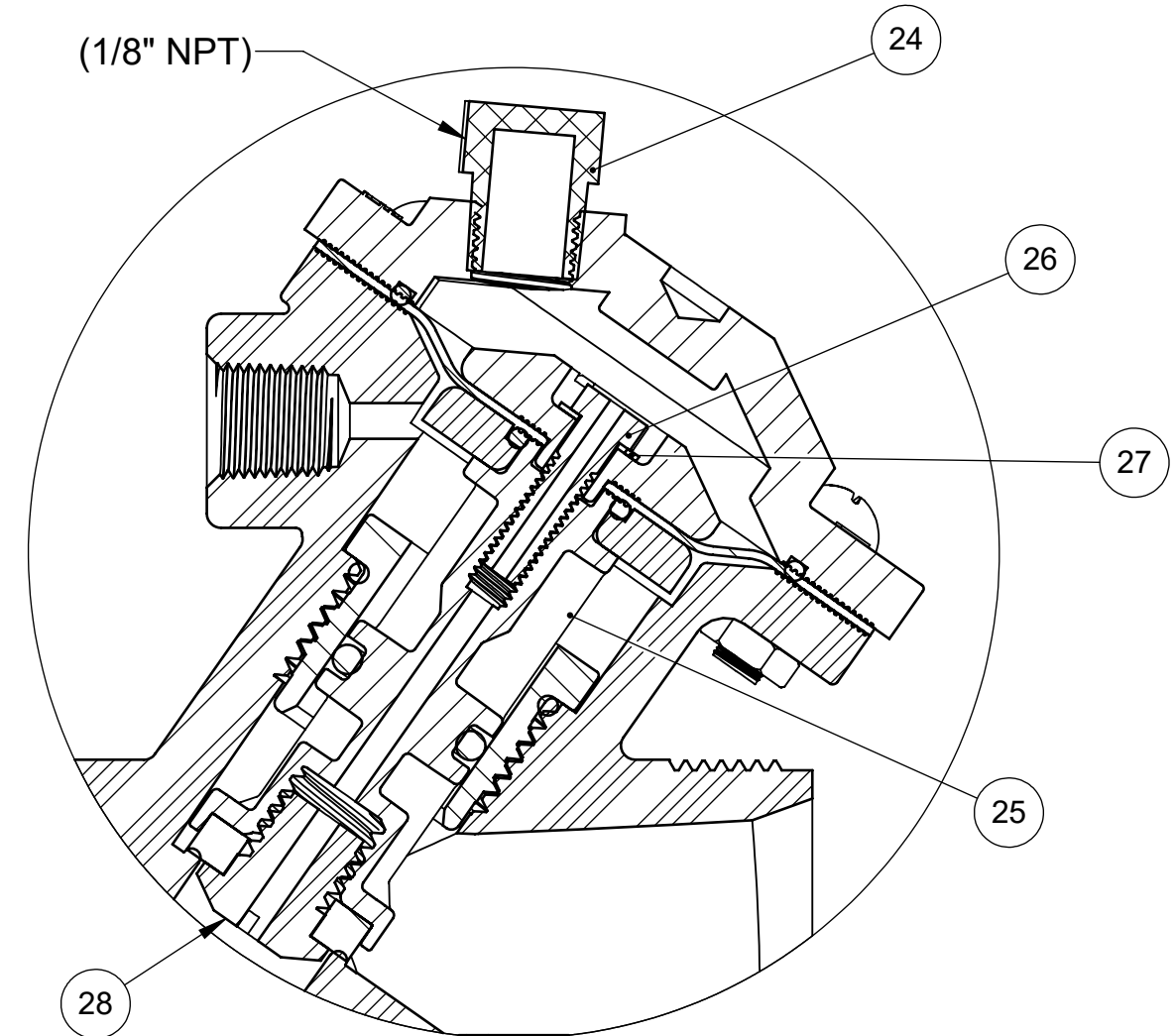
SCALE 1:2 SOLIDWORKS FORMAT SHEET 1 OF 2

- SEE DRAWING 1081309 FOR UNION END CONNECTORS & GROOVED ADAPTORS
- SEE SHEET 2 FOR CONFIGURATION OPTIONS

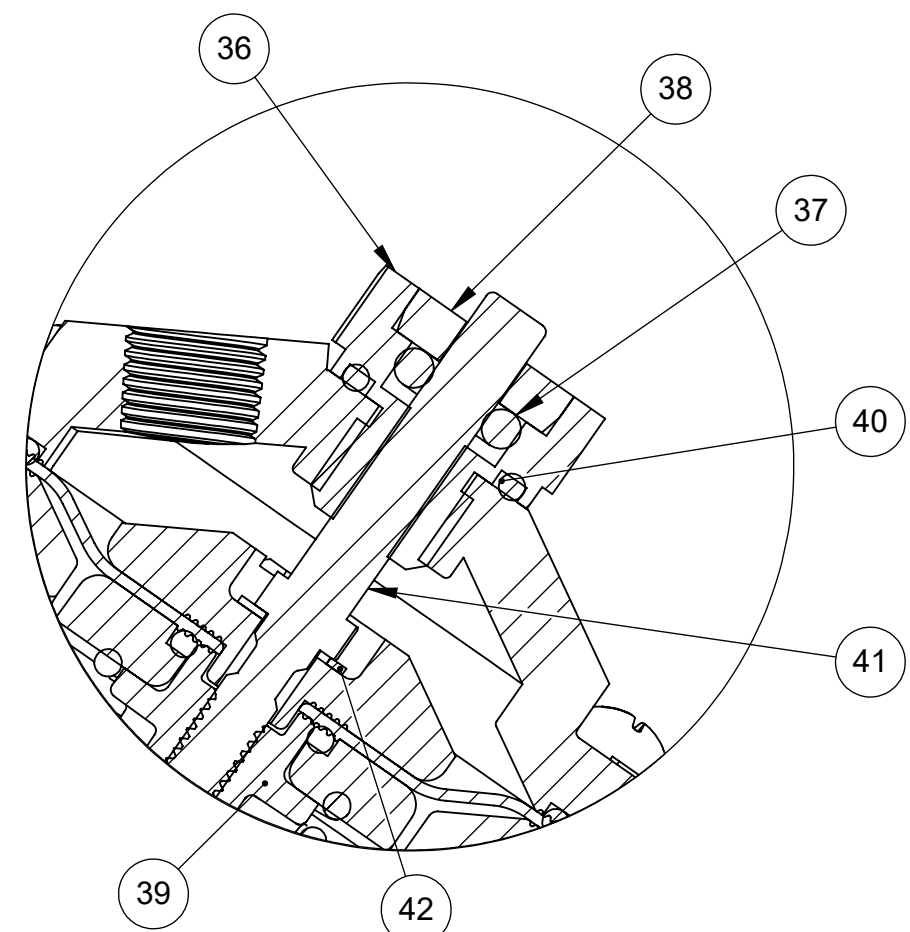
REVISIONS				
ECN	REV.	DESCRIPTION	DATE	APP'D
		SEE SHEET 1 FOR A LIST OF CHANGES		



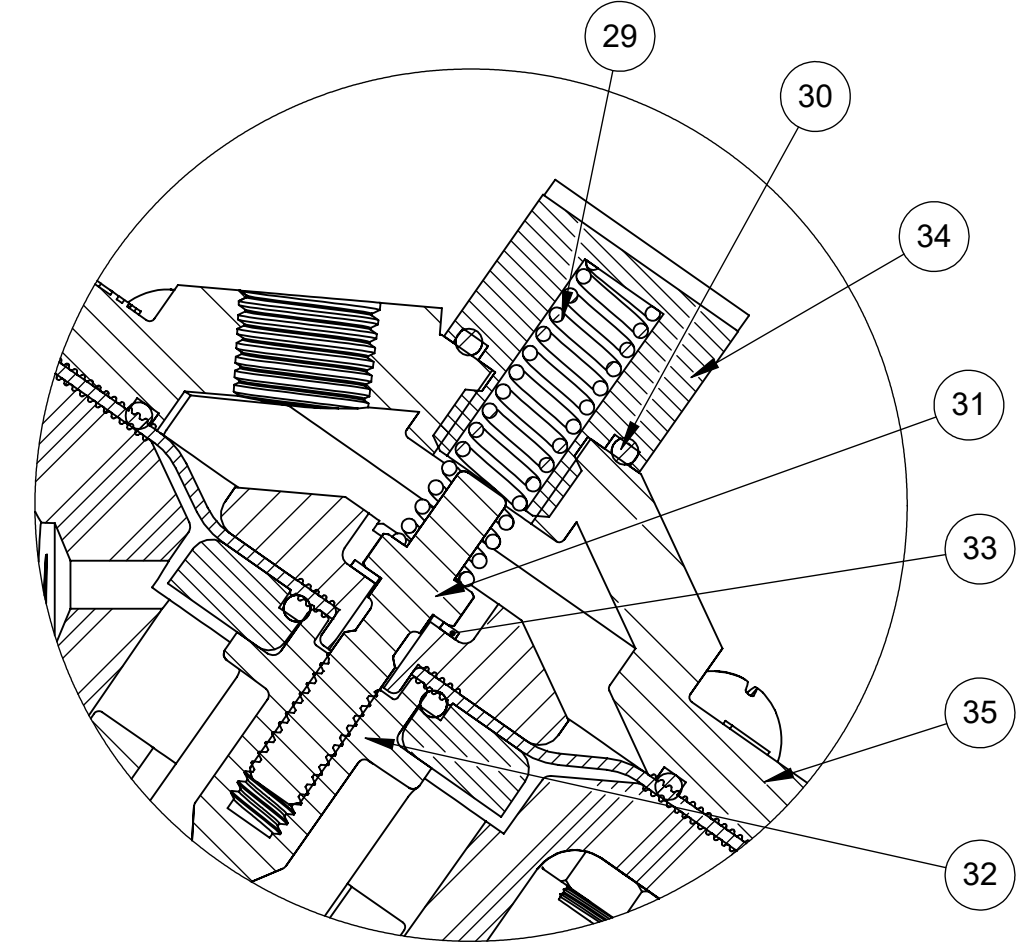
1070141 (K520-X211-14000)
LIMIT STOP



1071082 (K520-X230-14000)
NORMALLY CLOSED



1071079 (K520-X221-14000)
POSITION INDICATOR



1070143 (K520-X202-14000)
SPRING ASSIST CLOSED

LIMIT STOP MODEL				
ITEM NO.	DESCRIPTION	PART NUMBER	QTY.	
19	LIMIT STOP SCREW, 520	SS 1074988 (520-Y)	1	
20	O-RING, 2-010	BUNA 1071667 (ORB-010)	1	
21	LIMIT STOP NUT, 520	SS 1074987 (520-X)	1	
22	O-RING, 2-013	BUNA 1071669 (ORB-013)	1	
23	CAP, LIMIT STOP, 520	NORYL 1074946 (520-BBOK)	1	
NORMALLY CLOSED MODEL				
24	MALE PIPE PLUGS, 1/8" NPT	HDPE 1071912 (PLP-0006)	1	
25	SHAFT, 520, NC	NORYL 1077905	1	
26	SCREW, 520, DIA PLT, NC	SS 1077818	1	
27	WASHER, LOCK, INTERNAL, #8	SS 1006351	1	
28	DISC SCREW, 520, NC	NORYL 1078324	1	
SPRING ASSIST CLOSED MODEL				
29	SPRING, COMPRESSION	SS 1074981 (520-S)	1	
30	O-RING, 2-013	BUNA 1071669 (ORB-013)	1	
31	SCREW, 520, DIA PLT, SAC	SS 1077828	1	
32	SHAFT, 520, NRYL, PI & SAC	NORYL 1077907	1	
33	WASHER, LOCK, INTERNAL, #8	SS 1006351	1	
34	SPRING RETAINER, 520	SS 1074986 (520-T)	1	
35	CAP, LIMIT STOP, 520	NORYL 1074946 (520-BBOK)	1	
POSITION INDICATOR MODEL				
36	GUIDE HOUSING, 520	SS 1074970 (520-KB)	1	
37	O-RING, 2-106	BUNA 1071687 (ORB-106)	1	
38	PLUG, GUIDE HOUSING, 520	SS 1074971 (520-KC)	1	
39	SHAFT, 520, PI & SAC	NORYL 1077907	1	
40	O-RING, 2-013	BUNA 1071669 (ORB-013)	1	
41	SCREW, 520, DIA PLT, PI	SS 1077826	1	
42	WASHER, LOCK, INTERNAL, #8	SS 1006351	1	

- NOTE:
1. NORMALLY CLOSED CANNOT BE COMBINED WITH SPRING ASSIST CLOSED.
 2. LIMIT STOP MODEL CANNOT BE COMBINED WITH SPRING ASSIST CLOSED OPTION.
 3. POSITION INDICATOR MODEL FURNISHED WITH NORMALLY OPEN, SPRING ASSIST OPEN OPTION ONLY.

- SEE DRAWING 1081309 FOR UNION END CONNECTORS & GROOVED ADAPTORS
- SEE SHEET 1 FOR STANDARD NORMALLY OPEN MODEL

CONVERSION KITS	
DESCRIPTION	PART NO.
CONVERSION KIT (LIMIT STOP) CONSISTS OF ITEM NO'S 19 THRU 23	1071056 (K520-LSC)
CONVERSION KIT (SPRING ASSIST CLOSED) CONSISTS OF ITEM NO'S 29 THRU 35	1079602 (K520-SCCN)
CONVERSION KIT (POSITION INDICATOR) CONSISTS OF ITEM NO'S 35 THRU 42	1079599 (K520-PICN)

REPAIR PARTS KIST	
DESCRIPTION	PART NO.
INT. PARTS KIT (LIMITED STOP) CONSIST OF ITEM NO'S 19 THRU 22	1074973 (520-LS)
INT. PARTS KIT (NORM. CLOSED) CONSIST OF ITEM NO'S 4,10,11,25,26,27,28	1079601 (520-RGN)
INT. PARTS KIT (SPRING ASSIST CLOSED) CONSIST OF ITEM NO'S 29 THRU 33	1081789 (520-SCN)
INT. PARTS KIT (POSITION INDICATOR) CONSIST OF ITEM NO'S 36 THRU 42	1081782 (520-PIN)

THIS DOCUMENT IS SOLELY THE PROPERTY OF AQ-MATIC REPRODUCTION, USE DISCLOSURE, OR TRANSMISSION OF THIS DOCUMENT OR DETAILS CONTAINED HEREIN, IN PART OR IN WHOLE, IS PROHIBITED WITHOUT THE WRITTEN CONSENT OF AQ-MATIC ENGINEERING. THIS DOCUMENT AND ANY COPIES SHALL BE RETURNED TO AQ-MATIC UPON WRITTEN REQUEST.

DO NOT SCALE DRAWING. DIMS. ARE IN INCHES [mm]
INTERPRET DIMS AND TOLERANCES PER ASME Y14.5M -1994 UNLESS OTHERWISE SPECIFIED:
CORNER FILLETS R.005-.020 [0.127-.508]
TOLERANCES:
ANGLES: ± 1°
1 PLACE .X: ± .100 [2.54]
2 PLACE .XX: ± .010 [0.25]
3 PLACE .XXX: ± .005 [0.13]

THE COMPONENT, PART, OR ASSEMBLY DESCRIBED IN THIS DOCUMENT MUST COMPLY WITH THE EU (EUROPEAN UNION) DIRECTIVE: RoHS DIRECTIVE 2011/65/EC.

THIRD ANGLE PROJECTION

APPROVALS: TRK DATE: 11/1/21

CHECKED BY: APPROVED

AWMatic

CATALOG SHEET, 520, VALVE STANDARD MODEL

SIZE C DWG NO. 1078139 REV. R

SCALE 1:1 SOLIDWORKS FORMAT SHEET 2 OF 2