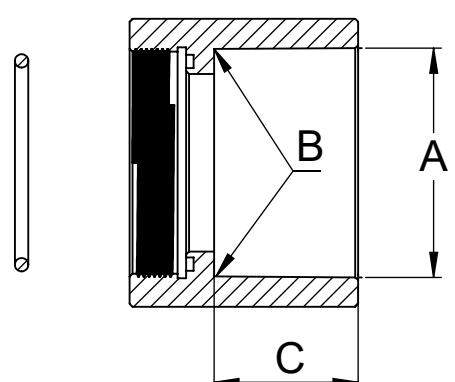


# THREADED END CONNECTORS

REVISIONS				
ECN	REV.	DESCRIPTION	DATE	APP'D
	A	RELEASE NEW DESIGN	07/25/01	VP
1507	B	TRANSFER TO AQ TEMPLATE	05/15/19	KJB
1608	C	ADD 4510478 ASSEMBLY, PART# 4510473	03/05/20	TRK
1675	D	ADD 4510518 ASSEMBLY, PART# 4510517	03/16/20	TRK
1941	E	COMBINE 2.5" AND 3.0" FLANGE, OBSOLETE 1075189 AND 1070251	09/02/21	SMH

## FEMALE SOCKET WELD END CONNECTOR KITS



VALVE SERIES	STANDARD	ENTRANCE A	BOTTOM B	DEPTH C	KIT PART NO.
524	A.S.T.M. 2"	2.387"	2.369"	1.50"	1070256 (K524-UF08UEP)
	I.S.O. NW-50	2.494"	2.481"	1.50"	1070260 (K524-UF50MEP)
	J.I.S. 50	2.376"	2.354"	1.50"	1071165 (K524-UF50JEP)
526	A.S.T.M. 2-1/2"	2.889"	2.868"	1.81"	1070257 (K526-UF10UEP)
	I.S.O. NW-65	2.970"	2.953"	1.81"	1070261 (K526-UF65MEP)
	J.I.S. 65	3.011"	2.984"	1.81"	1076600 (K526-UF65JEP)

## O-RING FOR END CONNECTORS

VALVE SERIES	MATERIAL	PART NO.	O-RING IDENTIFIER
524	E.P.D.M.	1071750 (ORE-226)	E
526	E.P.D.M.	1071753 (ORE-232)	E

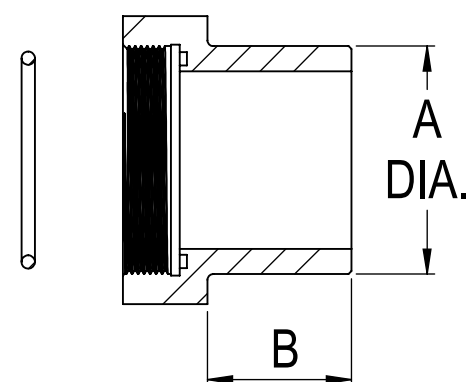
**NOTE: ALL CONNECTOR KITS CONTAIN (2) CONNECTORS AND (2) O-RINGS\* (ONE KIT REQ'D PER VALVE)**

\*WHEN ORDERING KITS, INSERT O-RING IDENTIFIER INTO PART NUMBER AS SHOWN IN THE EXAMPLE BELOW:

- 2" FEMALE SOCKET WELD WITH E.P.D.M. O-RING
- K524-UF08UEP

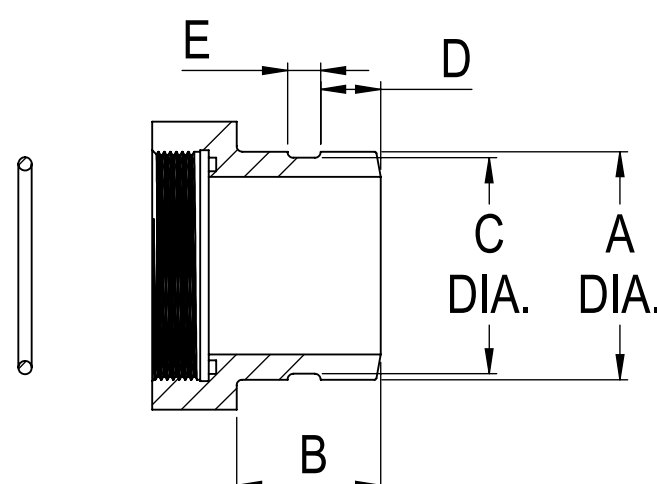
O-RING IDENTIFIER

## MALE SOCKET WELD END CONNECTOR KITS



VALVE SERIES	STANDARD	DIAMETER A	DEPTH B	KIT PART NO.
524	A.S.T.M. 2"	2.375/2.370"	1.50"	1070264 (K524-UM08UEP)
	I.S.O. NW-50	2.490/2.486"	1.50"	1070268 (K524-UM50MEP)
526	A.S.T.M. 2 1/2"	2.882/2.868"	1.69"	1070265 (K526-UM10UEP)
	I.S.O. NW-65	2.965/2.953"	1.69"	1070269 (K526-UM65MEP)

## GROOVED END CONNECTOR KITS

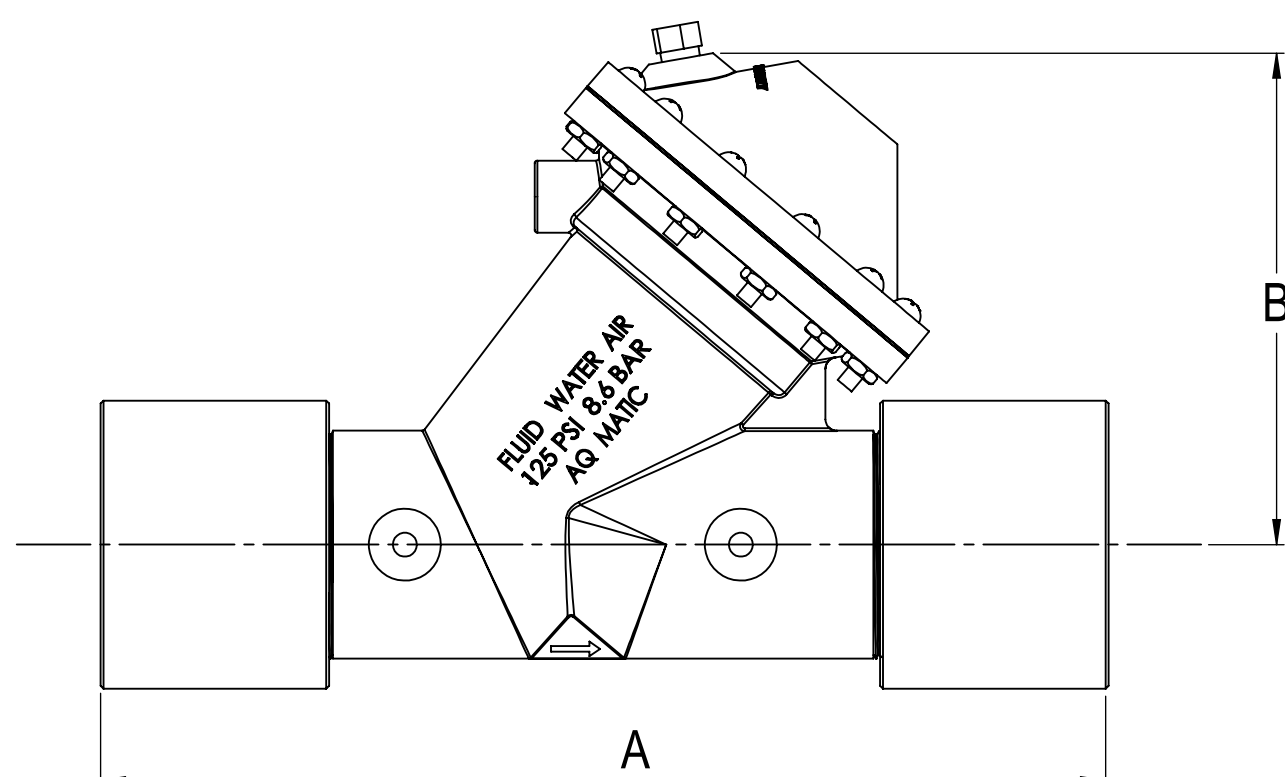


VALVE SERIES	PIPE SIZE	DIAMETER A	DEPTH B	DIAMETER C	DEPTH D	WIDTH E	KIT PART NO.
524	ASTM 2"	2.375/2.370"	1.50"	2.250"	.625"	.344"	4510478 (K524-UG08UEP)
526	ASTM 2 1/2"	2.882/2.868"	1.69"	2.720"	.625"	.344"	4510518 (K526-UG10UEP)

## NOMINAL OVERALL DIMENSIONS

VALVE SERIES	PIPE SIZE	UNITS	LENGTH A	HEIGHT B
524	2"	INCHES	10.50	5.06
		MM	266.7	128.5
526	2-1/2"	INCHES	15.00	7.31
		MM	381.0	185.7

- SEE DRAWING 1081309 FOR UNION END CONNECTORS & GROOVED ADAPTORS



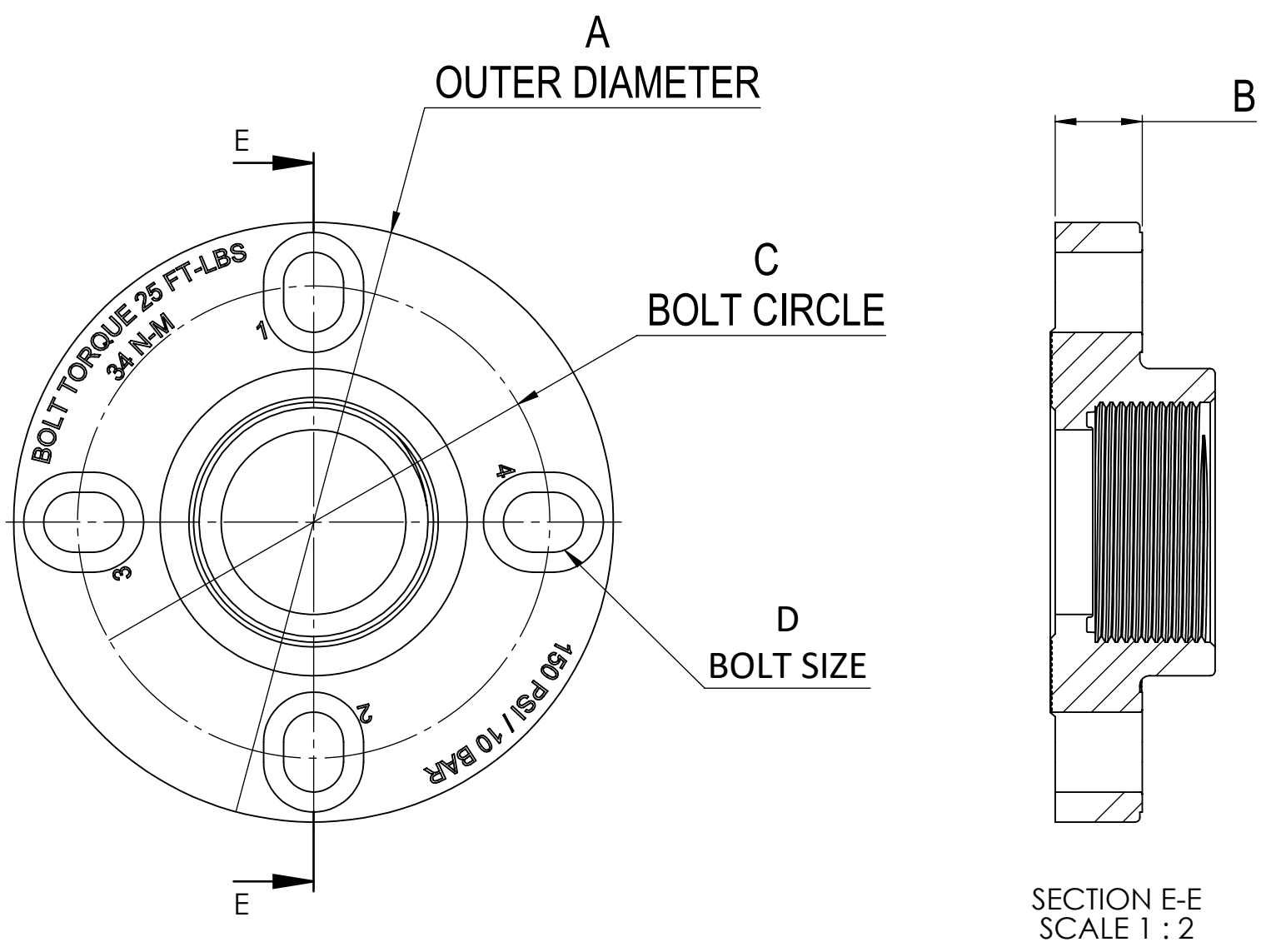
THIS DOCUMENT IS SOLELY THE PROPERTY OF AQ-MATIC. REPRODUCTION, USE DISCLOSURE, OR TRANSMISSION OF THIS DOCUMENT OR DETAILS CONTAINED HEREIN, IN PART OR IN WHOLE, IS PROHIBITED WITHOUT THE WRITTEN CONSENT OF AQ-MATIC ENGINEERING. THIS DOCUMENT AND ANY COPIES SHALL BE RETURNED TO AQ-MATIC UPON WRITTEN REQUEST.

DO NOT SCALE DRAWING. DIMS. ARE IN INCHES [mm]  
 INTERPRET DIMS AND TOLERANCES PER ASME Y14.5M -1994  
 UNLESS OTHERWISE SPECIFIED:  
 CORNER FILLETS R.005-.020 [.127-.508]  
 TOLERANCES:  
 ANGLES ± 1°  
 1 PLACE .X: ± .100 [2.54]  
 2 PLACE .XX: ± .010 [0.25]  
 3 PLACE .XXX: ± .005 [0.13]

THE COMPONENT, PART, OR ASSEMBLY DESCRIBED IN THIS DOCUMENT MUST COMPLY WITH THE EU (EUROPEAN UNION) DIRECTIVE: RoHS DIRECTIVE 2011/65/EC.			
THIRD ANGLE PROJECTION		AQ-MATIC VALVES AND CONTROLS	
APPROVALS	DATE	K524, K526	
DRAWN JWB	07/25/01	END CONNECTOR PARTS & KITS	
CHECKED BY		SIZE C	DWG NO. 1078150
APPROVED		SCALE 1:1	REV. E
		SOLIDWORKS FORMAT	SHEET 1 OF 2

2" & 2-1/2" END CONNECTOR PARTS & KITS

REVISIONS				
ECN	REV.	DESCRIPTION	DATE	APP'D
		SEE SHEET 1 FOR ALL CHANGES.		



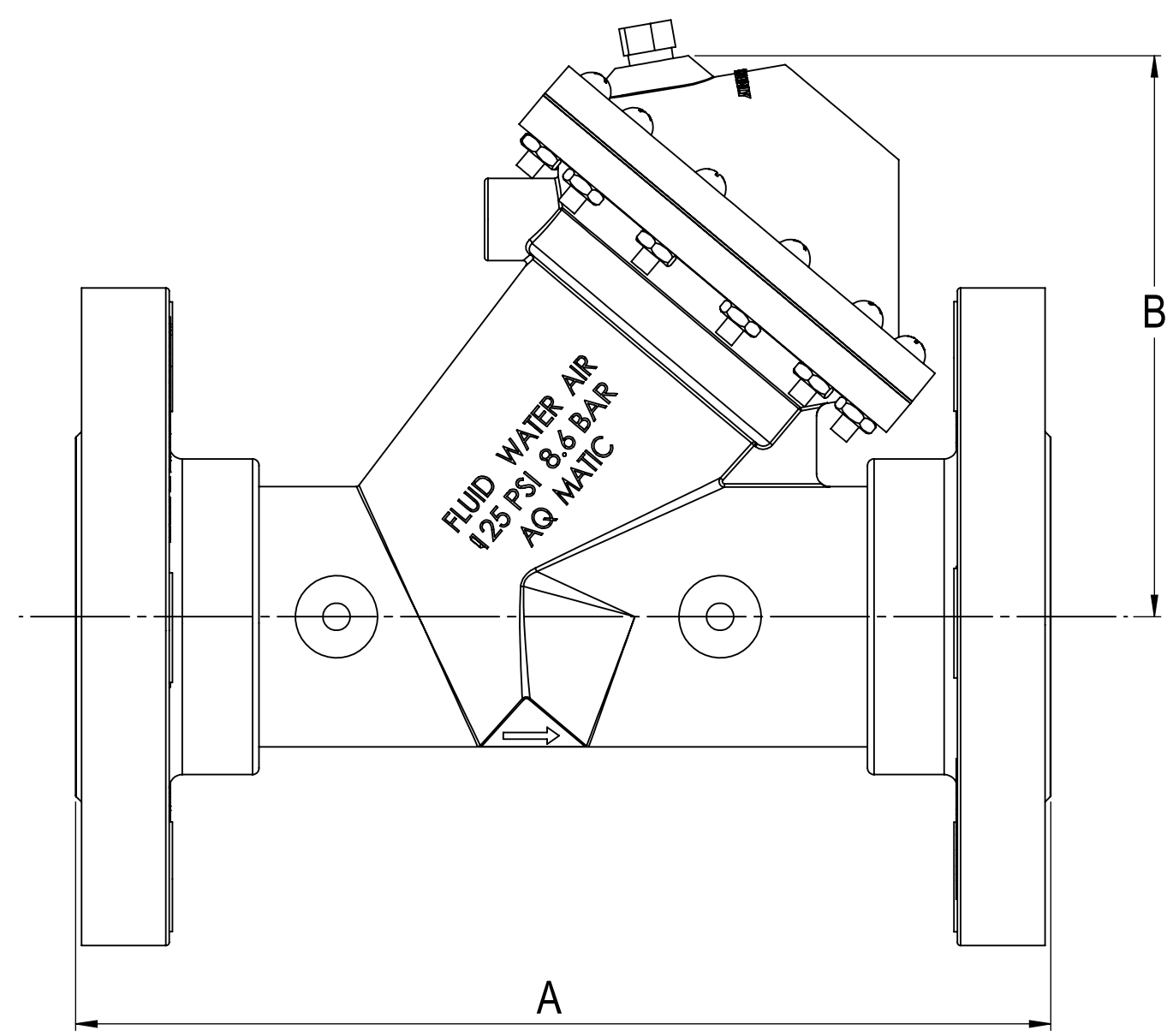
**FLANGED END CONNECTOR KITS**

VALVE SERIES	STANDARD	DIAMETER A	THICKNESS B	BOLT CIRCLE C	BOLT SIZE D	KIT PART NO.
524	A.S.T.M 2"	6.00"	.75"	4.75"	5/8"	1070250 (K524-V)
526	A.S.T.M 2-1/2" OR 3"	7.50"	1.10"	5.50" - 6.00"	5/8"	1070252 (K526-T)

**O-RING FOR FLANGED END CONNECTOR**

VALVE SERIES	MATERIAL	PART NO.
524	E.P.D.M	1071750
526	E.P.D.M	3024977

**NOTE: ALL CONNECTOR KITS CONTAIN (2) CONNECTORS AND (2) O-RINGS\* (ONE KIT REQ'D PER VALVE)**



**NOMINAL OVERALL DIMENSIONS**

VALVE SERIES	PIPE SIZE	UNITS	LENGTH A	HEIGHT B
524	2"	INCHES	9.00	5.06
		MM	228.6	128.5
526	2-1/2" OR 3"	INCHES	12.0	7.31
		MM	304.8	185.7

• SEE DRAWING 1081309 FOR UNION END CONNECTORS & GROOVED ADAPTORS

THIS DOCUMENT IS SOLELY THE PROPERTY OF AQ-MATIC. REPRODUCTION, USE DISCLOSURE, OR TRANSMISSION OF THIS DOCUMENT OR DETAILS CONTAINED HEREIN, IN PART OR IN WHOLE, IS PROHIBITED WITHOUT THE WRITTEN CONSENT OF AQ-MATIC ENGINEERING. THIS DOCUMENT AND ANY COPIES SHALL BE RETURNED TO AQ-MATIC UPON WRITTEN REQUEST.

DO NOT SCALE DRAWING. DIMS. ARE IN INCHES [mm]. INTERPRET DIMS AND TOLERANCES PER ASME Y14.5M -1994 UNLESS OTHERWISE SPECIFIED: CORNER FILLETS R.005-.020 [0.127-.508] TOLERANCES: ANGLES: ± 1° 1 PLACE .XX: ± .015 [0.38] 2 PLACE .XX: ± .01 [0.3] 3 PLACE .XXX: ± .005 [0.13]

THE COMPONENT, PART, OR ASSEMBLY DESCRIBED IN THIS DOCUMENT MUST COMPLY WITH THE EU (EUROPEAN UNION) DIRECTIVE: RoHS DIRECTIVE 2011/65/EC.

THIRD ANGLE PROJECTION

APPROVALS: [Signature] DATE: 07/25/01

DRAWN: JWB

CHECKED BY:

APPROVED:

**AQ-MATIC VALVES AND CONTROLS**

**K524, K526 END CONNECTOR PARTS & KITS**

SIZE: C DWG NO.: 1078150 REV.: E

SCALE: SOLIDWORKS FORMAT SHEET 2 OF 2