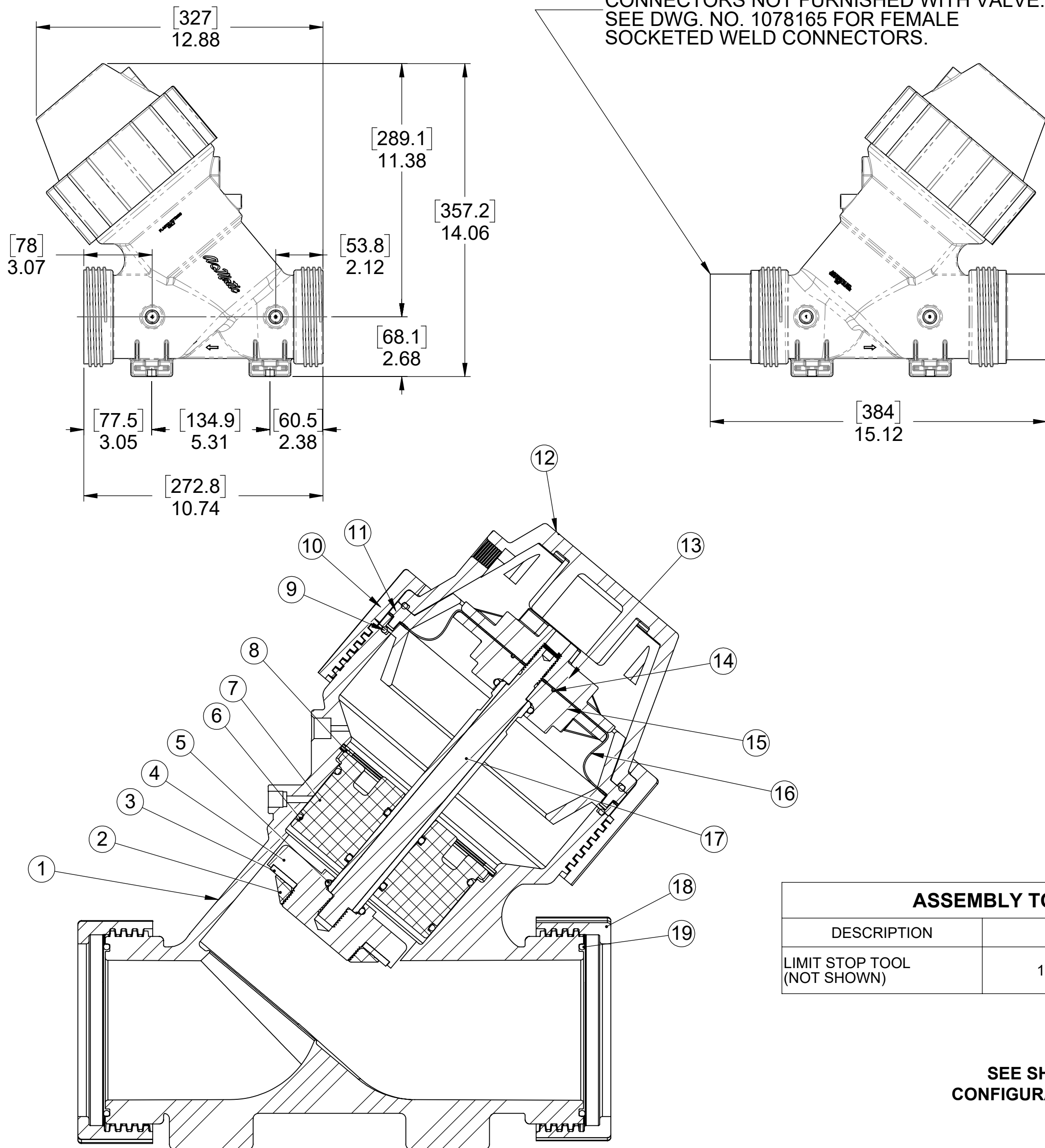


NOTE:
CONNECTORS NOT FURNISHED WITH VALVE.
SEE DWG. NO. 1078165 FOR FEMALE
SOCKETED WELD CONNECTORS.



REVISIONS				
REV	ECN	DESCRIPTION	DATE	APP'D
K		1-WAS: INSTALL WASHER SO THAT MARKINGS ARE SEATED FACE DOWN ON THE SHAFT FLANGE AND MARKS ARE NOT VISIBLE WHEN SEATED.	6/28/2013	TJM
L		1-ITEM #4- WAS:1073482, 2-REM'D: BR FROM PART #'S, 3-UPDATED TITLE BLOCK	8/11/2015	TJM
M	1001	AQ MATIC UPDATE & VERIFIED PART NUMBERS	1/17/2017	MGS
N	1764	REDRAWN W/ MODEL UPDATE, REM'D DETAIL A, REPLACED DIAPHRAGM PLATES, REM'D DIAPHRAGM PLATE WASHER, REM'D STRAP WRENCH	9/14/2020	PMJ
P	2071	ADDING CAST/MACH DIAPHRAGM PLATES 4510654 AND 4510653	5/13/22	TRK

NORMALLY OPEN MODEL				
ITEM NO.	DESCRIPTION	STD	PART NUMBER	QTY.
1	BODY, 537, VALVE	NORYL	1073472 (V537- 410K)	1
2	NUT, DISC PLATE, 537, MCHD	PVC	1073459 (V537-093)	1
3	DISC, 537	EPDM	1073463 (V537-110)	1
		FKM	1073465 (V537-112)	
4	HOLDER, DISC, 537	ULTEM	43361 (V537-502)	1
5	O-RING, 2-212	EPDM	1071745 (ORE-212)	4
		FKM	1071816 (ORV-212)	
6	O-RING, 2-240	EPDM	1071757 (ORE-240)	2
		FKM	1071830 (ORV-240)	
7	GUIDE, SHAFT, 537	PVC	1073478 (V537-491)	1
8	RING, RETAINING, 537	SS	1073505 (V537-598)	1
9	O-RING, 2-259	BUNA	1071714 (ORB-259)	2
10	NUT, CAP RETAINING, 537	NORYL	1073446 (V537-030K)	1
11	DIAPHRAGM SUPPORT, K537	NORYL	1073491 (V537-551K)	2
12	CAP, VALVE, 537	NORYL	1073445 (V537-020K)	1
13	K537 UPPER DIAPHRAGM PLATE	SS	4510654	1
14	O-RING, 2-024	BUNA	1071676 (ORB-024)	1
15	K537 LOWER DIAPHRAGM PLATE	SS	4510653	1
16	DIAPHRAGM, 537	BUNA	1073462 (V537-100)	1
17	SHAFT ASSY,537,PVC	PVC/SS	1073508 (V537-702)	1
18	NUT, RETAINING, 537	NORYL	1073458	2
19	O-RING, 2-239	EPDM	1071756 (ORE-239)	2
		FKM	1071829 (ORV-239)	

ASSEMBLY TOOLS	
DESCRIPTION	PART NO
LIMIT STOP TOOL (NOT SHOWN)	1073556 (V560-579)

REPAIR KITS	
DESCRIPTION	PART NO
DIAPHRAGM & SEALS KIT CONSISTS OF ITEM NO'S 3, 5(4), 6(2), 9(2), 14, 16, 19(2) DIAPHRAGM 1073462 (V537-100)	EPDM 1070321 (537-RAE)
	FKM 1070337 (537-RAVFB)
INT. PARTS KIT CONSISTS OF ITEM NO'S 2, 4, 7, 8, 11(2), 13, 15, 17	1070345 (K537-RF)

SEE SHEET 2 FOR
CONFIGURATION OPTIONS

NORMALLY OPEN
1070316 (K537-X200-14000)

THIS DOCUMENT IS SOLELY THE PROPERTY OF AQ-MATIC REPRODUCTION, USE DISCLOSURE, OR TRANSMISSION OF THIS DOCUMENT OR DETAILS CONTAINED HEREIN, IN PART OR IN WHOLE, IS PROHIBITED WITHOUT THE WRITTEN CONSENT OF AQ-MATIC ENGINEERING. THIS DOCUMENT AND ANY COPIES SHALL BE RETURNED TO AQ-MATIC UPON WRITTEN REQUEST.

INTERPRET DIMENSIONS AND TOLERANCES PER ASME Y14.5M -1994

UNLESS OTHERWISE SPECIFIED:
DIMENSIONS ARE IN INCHES (mm)
CORNER FILLETS R.005-.020 [.127-.508]
TOLERANCES:
ANGLES: ±1°
1 PLACE .X: ±.100 [2.54]
2 PLACE .XX: ±.010 [0.25]
3 PLACE .XXX: ±.005 [0.13]

THE COMPONENT OR PRODUCT DESCRIBED IN THIS DOCUMENT MUST COMPLY WITH RoHS 3 EU (EUROPEAN UNION) DIRECTIVE 2015/863

THIRD ANGLE PROJECTION

APPROVALS: DRAWN: PMJ, CHECKED BY: APPROVED: DATE: 9/14/2020

AQ-Matic AQ-MATIC VALVES AND CONTROLS

DESCRIPTION: **CATALOG SHEET 537 DIAPHRAGM VALVE**

SIZE: C, DWG NO.: 1077691, REV.: P

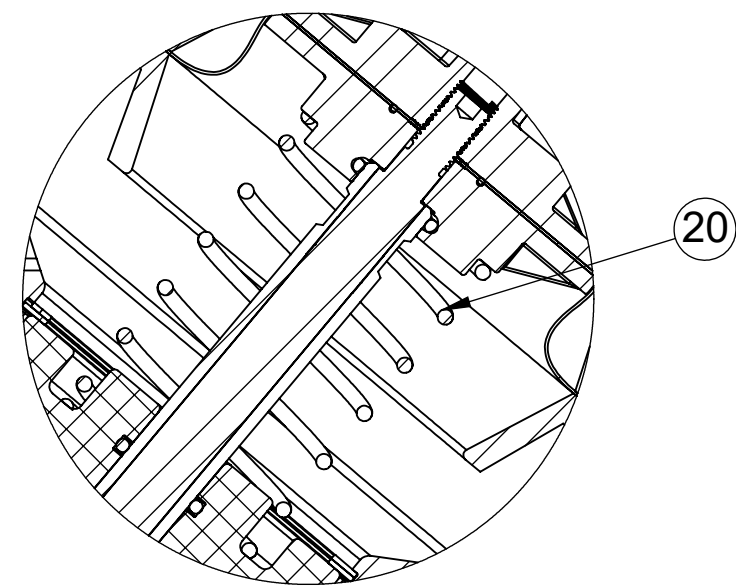
SCALE: 1:2, SOLIDWORKS FORMAT, SHEET 1 OF 2

4

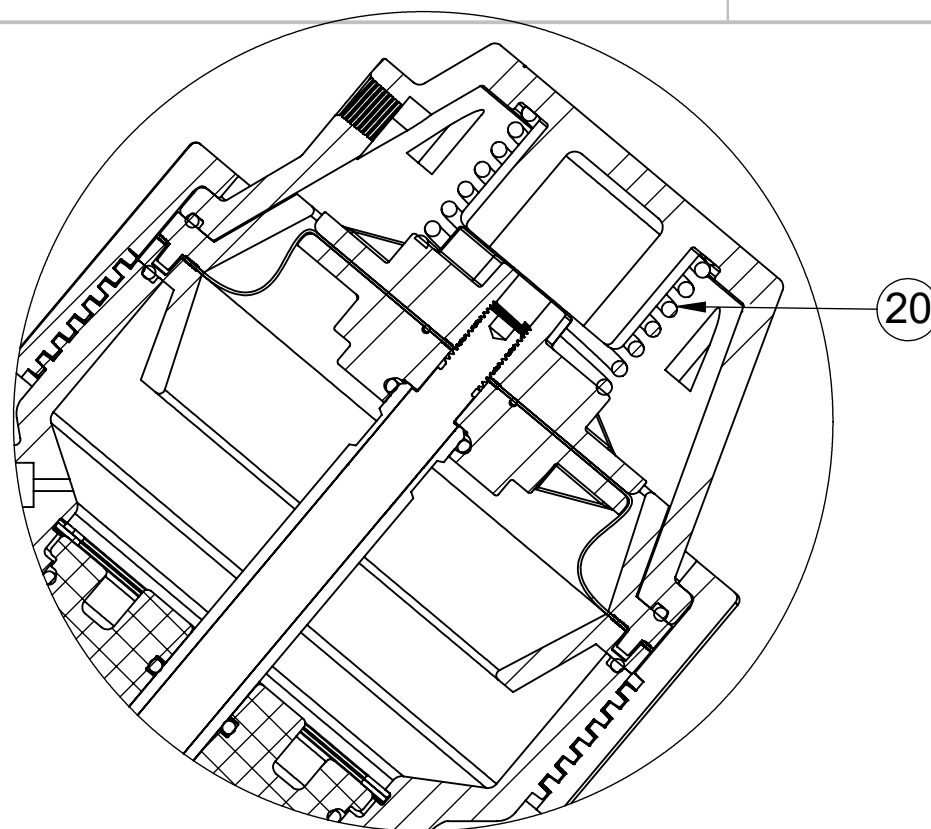
3

2

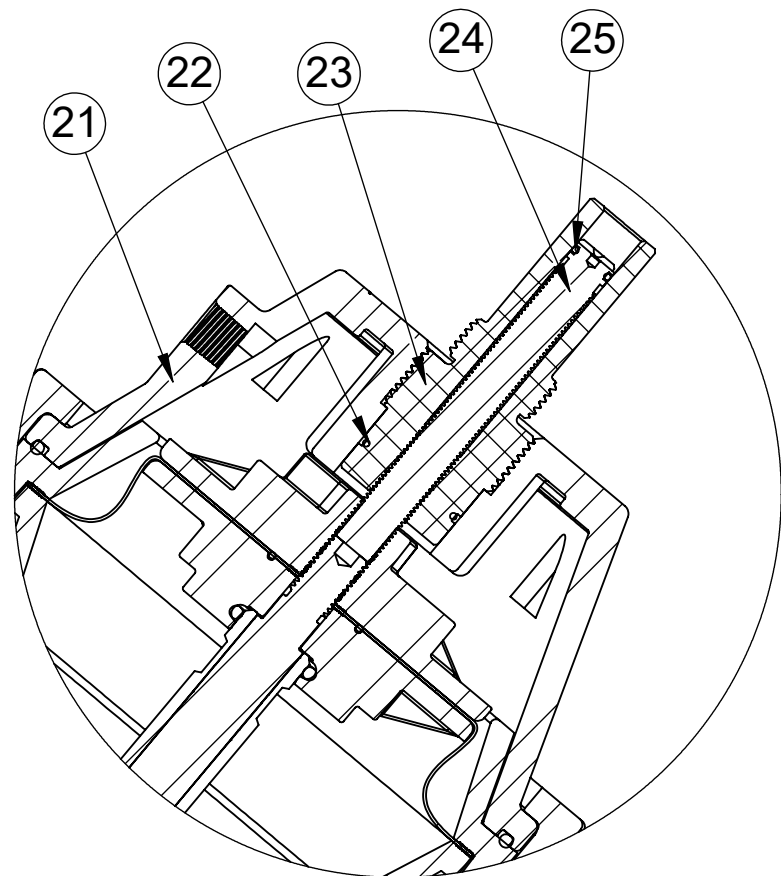
1



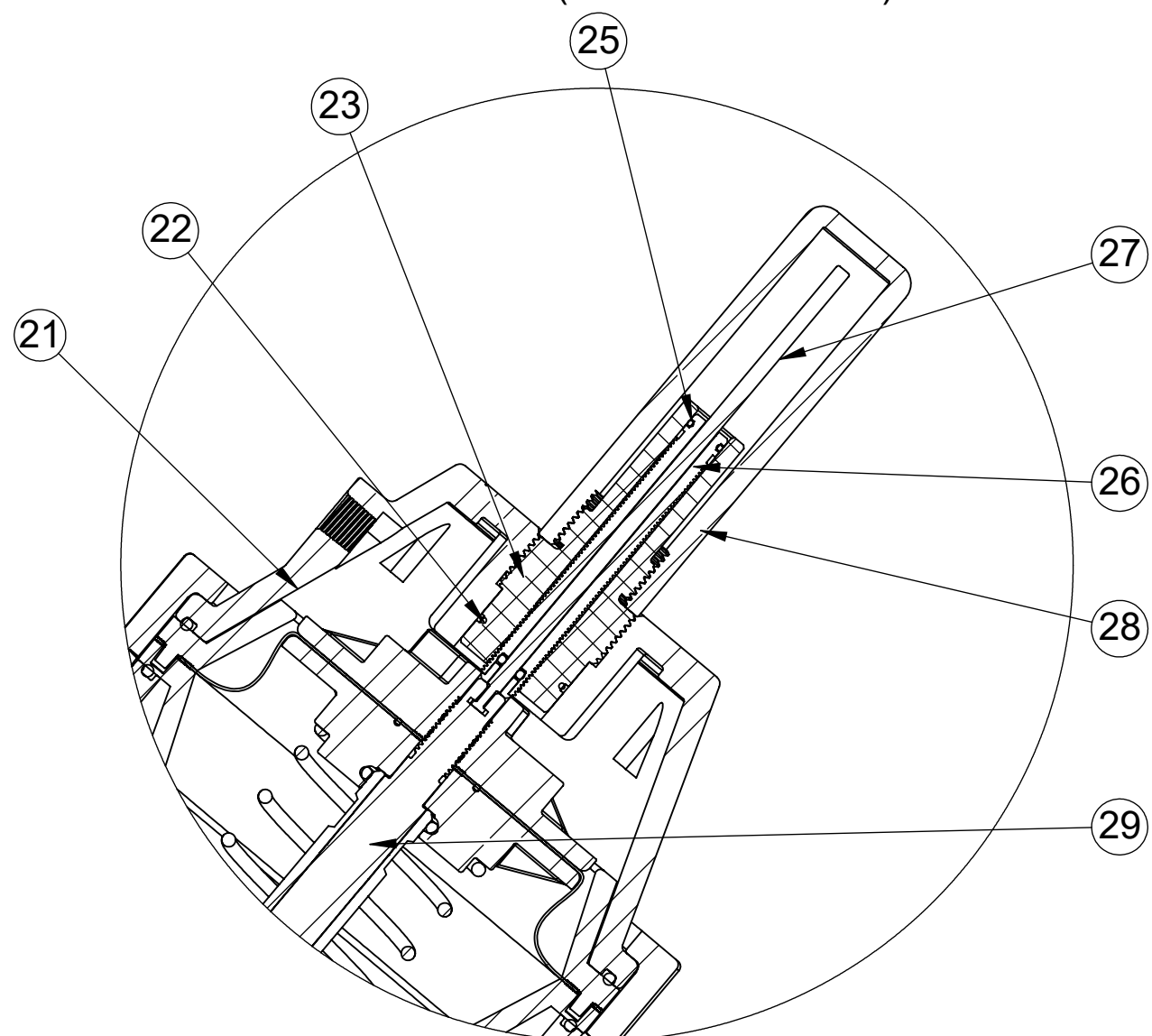
SPRING ASSIST OPEN
1071390 (K537-X201-14000)



SPRING ASSIST CLOSED
1071391 (K537-X202-14000)



LIMIT STOP
1070317 (K537-X210-14000)



LIMIT STOP / POSITION INDICATOR
1071380 (K537-X2A1-14000) - SPRING ASSIST OPEN
1071381 (K537-X2A2-14000) - SPRING ASSIST CLOSED

REVISIONS				
REV	ECN	DESCRIPTION	DATE	APP'D
SEE SHEET 1 FOR REVISION HISTORY				

SPRING ASSIST OPEN AND CLOSED				
ITEM NO.	DESCRIPTION	STD	PART NUMBER	QTY.
20	SPRING, COMPRESSION, 537	SS	1073467 (V537-170)	1

LIMIT STOP				
ITEM NO.	DESCRIPTION	STD.	PART NUMBER	QTY.
21	CAP, 537, LS/PI	NORYL	1073473 (V537-420K)	1
22	O-RING, 2-024	BUNA	1071676 (ORB-024)	2
23	GUIDE, LS/PI, 537	PVC	1073493 (V537-570)	1
24	SCREW, LIMIT STOP, 537	SS	1073498 (V537-576)	1
25	O-RING, 2-012	BUNA	1071668 (ORB-012)	1

LIMIT STOP WITH POSITION INDICATOR				
ITEM NO.	DESCRIPTION	STD.	PART NUMBER	QTY.
21	CAP, 537, LS/PI	NORYL	1073473 (V537-420K)	1
22	O-RING, 2-024	BUNA	1071676 (ORB-024)	2
23	GUIDE, LS/PI, 537	PVC	1073493 (V537-570)	1
25	O-RING, 2-012	BUNA	1071668 (ORB-012)	1
26	SCREW, LIMIT STOP, ASSY., 537	SS	1073506 (V537-700)	1
27	ROD, PI, 537	SS	1073492 (V537-555)	1
28	PI SIGHT GLASS, 537	ACRYLIC	1073489 (V537-550)	1
29	SHAFT, 537, PVC, PI	PVC/SS	1073507 (V537-701)	1

REPAIR KITS		
DESCRIPTION	KIT NUMBER	
INT. PARTS KIT (SPRING ASSIST CLOSED) CONSISTS OF ITEM NO 20	1075239	537-S
INT. PARTS KIT (SPRING ASSIST OPEN) CONSISTS OF ITEM NO 20		
INT. PARTS KIT (LIMIT STOP) CONSISTS OF ITEM NOS 22, 23, 24, 25	1075237	537-LS
INT. PARTS KIT (LIMIT STOP / POS. INDICATOR) CONSISTS OF ITEM NOS 13, 22, 23, 25, 26, 27, 28, 29	1081805	537-PI

CONVERSION KITS		
DESCRIPTION	KIT NUMBER	
CONVERSION KIT (SPRING ASSIST CLOSED) CONSISTS OF ITEM NO 20	1075239	537-S
CONVERSION KIT (SPRING ASSIST OPEN) CONSISTS OF ITEM NO 20		
CONVERSION KIT (LIMIT STOP) CONSISTS OF ITEM NOS 9, 13, 21, 22, 23, 24, 25	1071377	537-LSC
CONVERSION KIT (LIMIT STOP / POS. INDICATOR) CONSISTS OF ITEM NOS 11, 16, 21, 22, 23, 25, 26, 27, 28, 29	1071378	537-PIC

SEE SHEET 1 FOR NORMALLY OPEN MODEL

THIS DOCUMENT IS SOLELY THE PROPERTY OF AQ-MATIC REPRODUCTION, USE DISCLOSURE, OR TRANSMISSION OF THIS DOCUMENT OR DETAILS CONTAINED HEREIN, IN PART OR IN WHOLE, IS PROHIBITED WITHOUT THE WRITTEN CONSENT OF AQ-MATIC ENGINEERING. THIS DOCUMENT AND ANY COPIES SHALL BE RETURNED TO AQ-MATIC UPON WRITTEN REQUEST.

INTERPRET DIMENSIONS AND TOLERANCES PER ASME Y14.5M -1994

UNLESS OTHERWISE SPECIFIED:
DIMENSIONS ARE IN INCHES (mm)
CORNER FILLETS R.005-020 [127-508]
TOLERANCES:
ANGLES: ±1°
1 PLACE .X: ±.100 [2.54]
2 PLACE .XX: ±.010 [0.25]
3 PLACE .XXX: ±.005 [0.13]

THE COMPONENT OR PRODUCT DESCRIBED IN THIS DOCUMENT MUST COMPLY WITH RoHS 3 EU (EUROPEAN UNION) DIRECTIVE 2015/863

THIRD ANGLE PROJECTION	
APPROVALS	DATE
DRAWN PMJ	9/14/2020
CHECKED BY	
APPROVED	

AQ-Matic AQ-MATIC VALVES AND CONTROLS

DESCRIPTION
CATALOG SHEET
537 DIAPHRAGM VALVE

SIZE **C** DWG NO. **1077691** REV. **P**

SCALE 1:2 SOLIDWORKS FORMAT SHEET 2 OF 2

4

3

2

1