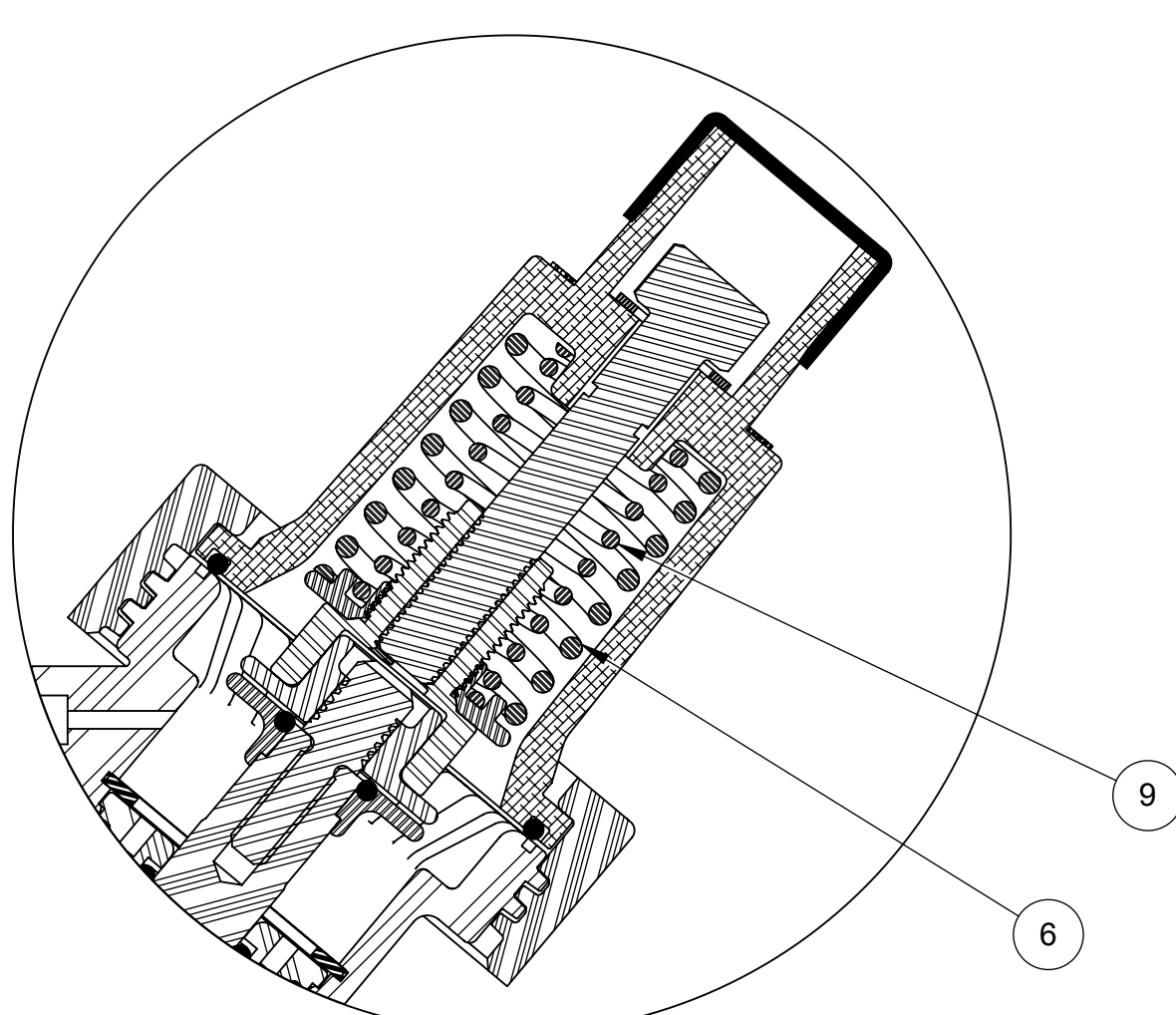
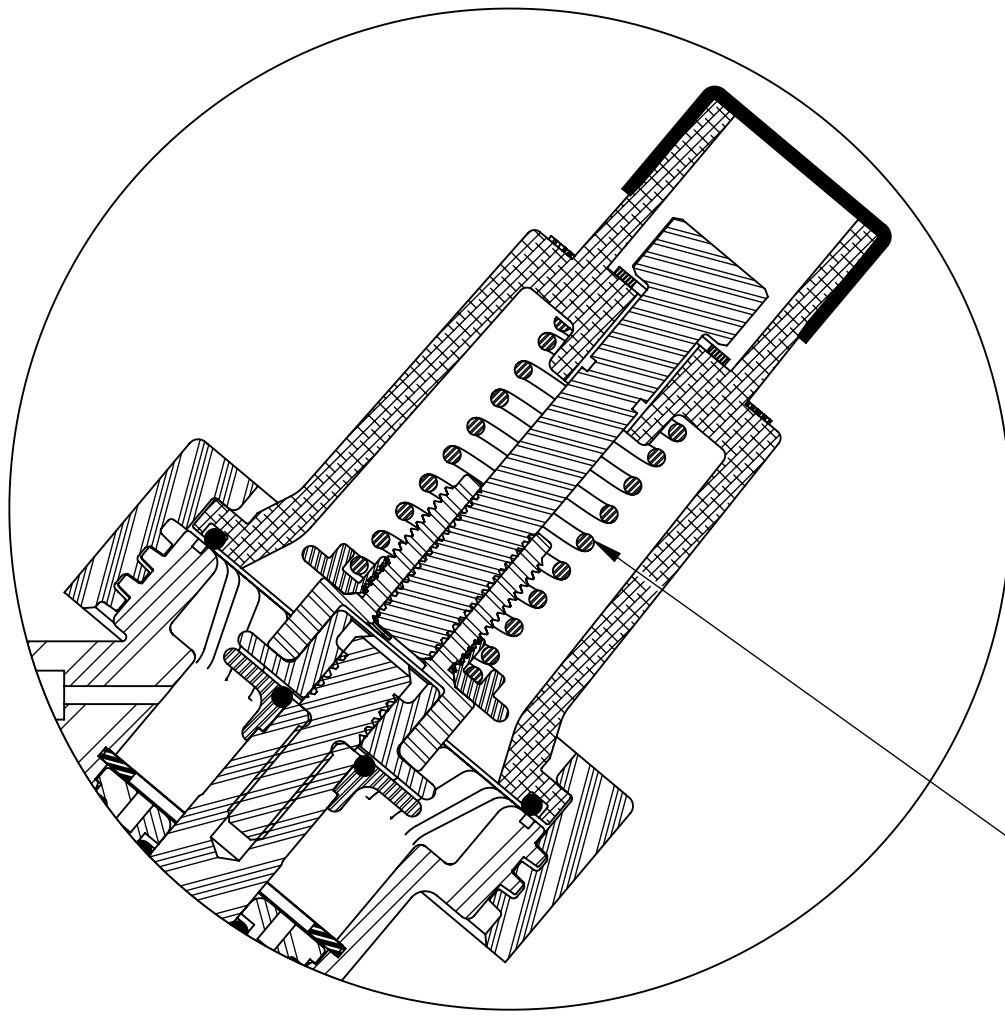


REVISIONS				
ECN	REV.	DESCRIPTION	DATE	APP'D
1280	M	CORRECTED REPAIR KIT-100# CALLOUT, UPDATE DW # TO 1084008	07/31/18	KJB
1499	N	UPDATED ITEM NO. 11 PART NO.: WAS 1242718 NOW 1071744	06/17/19	KJB
1628	P	CORRECT MINOR ERRORS, STANDARDIZE LAYOUT	01/15/20	PMJ
1846	R	MODEL NUMBERS ADDED, HATCHING UPDATED	2/22/2021	PMJ
1857	S	INSTRUCTIONS FOR REPAIR KITS ADDED	3/4/2021	PMJ
2133	T	REPLACED 1073312 WITH 4510752 SPIRAL RETAINING RING	8/7/2023	TRK

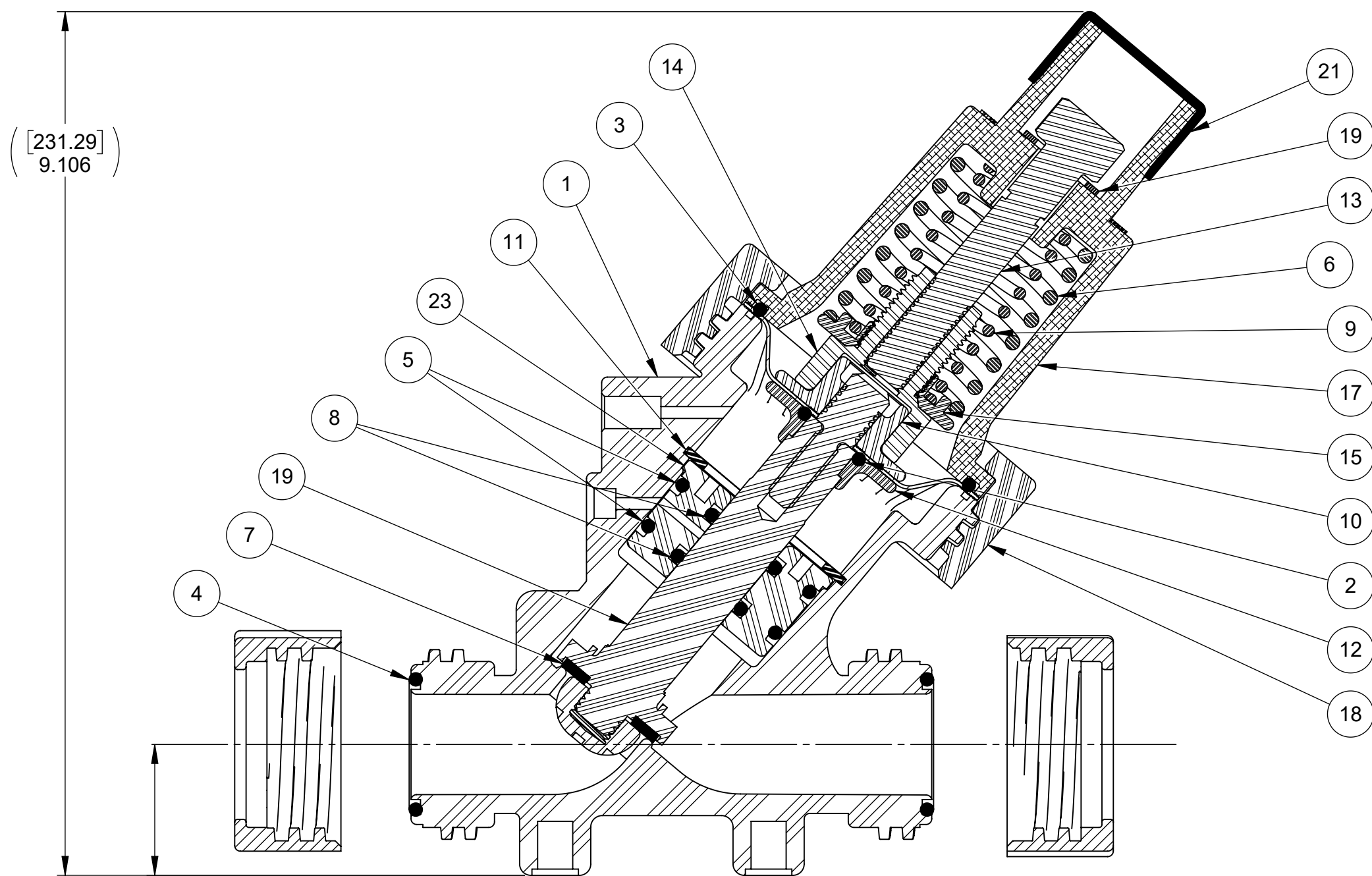


1079700 (K531-X203-14000) (30 PSI - 2 BAR)
FAILSAFE CLOSED

1071294 (K531-X205-14000) (100 PSI - 7 BAR)
FAILSAFE CLOSED

NOTE:
REPLACEMENT COMPONENTS UNIQUE TO FAILSAFE DESIGN ARE AVAILABLE AS A REPAIR KIT ONLY. SEE SHEET 2 FOR KIT DETAILS.

ITEM NO.	PART NUMBER	MODEL	DESCRIPTION	1079700 QTY.	1071291 QTY.	1071294 QTY.
1	1073287	V531-410K	BODY, 531, VALVE		1	
2	1071700	ORB-208	O-RING, 2-208		1	
3	1071705	ORB-232	O-RING, 2-232		1	
4	1071748	ORE-218	O-RING, 2-218		2	
5	1071749	ORE-223	O-RING, 2-223		2	
6	1073284	V531-171	SPRING, COMPRESSION	-	1	
7	1073279	V531-110	DISC		1	
8	1071744	ORE-210	O-RING, 2-210		2	
9	1073285	V531-172	SPRING, 531 (FS30 & FS100)		1	
10	1073289	V531-172	PLATE, UPPR DPHRGM (FAILSAFE)		1	
11	4510752	V531-593	RING, SPIRAL RETAINING, 531		1	
12	1073290	V531-446	PLATE, LWR DPHRGM (FAILSAFE)		1	
13	1073311	V531-592	SCREW, FAILSAFE, 531		1	
14	1073313	V531-596	BASE, SPRING SUPPORT		1	
15	1073314	V531-597	RING, RETAINER (FOR ADJUST FS)		1	
16	1073296	V531-532	SHAFT, 531, FAILSAFE		1	
17	1073293	V531-495K	VALVE CAP, 531 FAILSAFE		1	
18	1073395	V535-080K	NUT, SOCKET RETAINING, 535 PIPE		1	
19	1073596	WAS-0025	WASHER, (1.00X.686X.060)		1	
23	1073292	V531-491	SHAFT GUIDE, 531		1	
21	1071483		CAP PLUG, 1-1/2 X 1"		1	
22	1073274	V531-093K	NUT, DISC RETAINING, 531	-	1	-
23	1073277	V531-100	DIAPHRAGM, 531	-	1	-
24	1073273	V531-080K	NUT, RETAINING, 531	-	2	-
25	Default	V531-093K	NUT, DISC RETAINING, 531	1	1	1



1071291 (K531-X204-14000) (60 PSI - 4 BAR)
FAILSAFE CLOSED

THIS DOCUMENT IS SOLELY THE PROPERTY OF AQ-MATIC REPRODUCTION, USE DISCLOSURE, OR TRANSMISSION OF THIS DOCUMENT OR DETAILS CONTAINED HEREIN, IN PART OR IN WHOLE, IS PROHIBITED WITHOUT THE WRITTEN CONSENT OF AQ-MATIC ENGINEERING. THIS DOCUMENT AND ANY COPIES SHALL BE RETURNED TO AQ-MATIC UPON WRITTEN REQUEST.

DO NOT SCALE DRAWING. DIMS. ARE IN INCHES [mm] INTERPRET DIMS AND TOLERANCES PER ASME Y14.5M -1994 UNLESS OTHERWISE SPECIFIED:
*CORNER FILLETS R.005-.020 [0.127-.508]
TOLERANCES:
ANGLES: ± 1°
1 PLACE .X: ± .100 [2.54]
2 PLACE .XX: ± .010 [0.25]
3 PLACE .XXX: ± .005 [0.13]

THE COMPONENT, PART, OR ASSEMBLY DESCRIBED IN THIS DOCUMENT MUST COMPLY WITH THE EU (EUROPEAN UNION) DIRECTIVE: RoHS DIRECTIVE 2011/65/EC.

THIRD ANGLE PROJECTION	
APPROVALS	DATE
DRAWN TMS	05/21/10
CHECKED BY	
APPROVED	

AQ-Matic AQ-MATIC VALVES AND CONTROLS

CATALOG SHEET, 531 FAILSAFE, VALVE

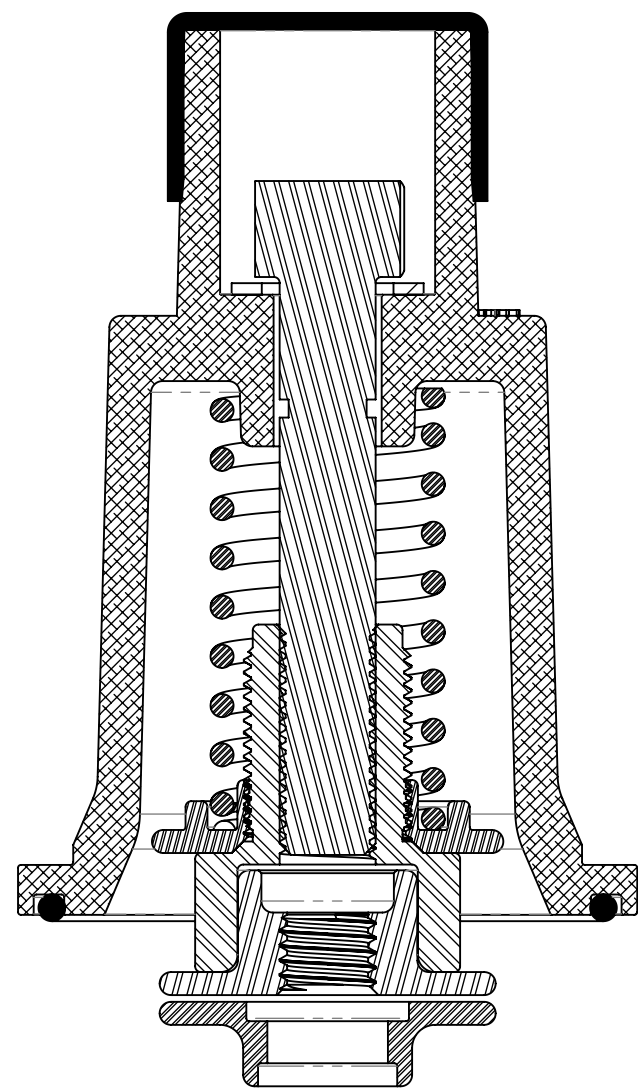
SIZE **C** DWG NO. **1084008** REV. **T**

SCALE **3:4** SOLIDWORKS FORMAT SHEET 1 OF 2

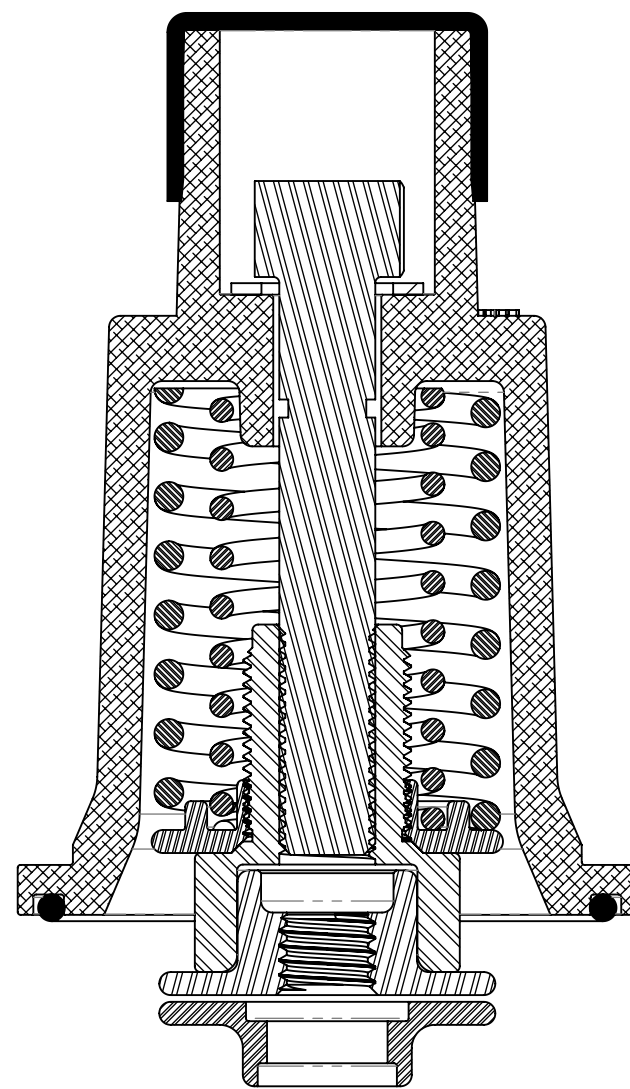
CAP REPLACEMENT INSTRUCTIONS:

1. TURN SCREW (16) OF OLD CAP CLOCKWISE UNTIL SPRINGS ARE FULLY COMPRESSED.
2. UNSCREW CAP NUT (21) AND REMOVE OLD CAP ASSEMBLY.
3. PLACE O-RING (3) INTO BOTTOM GROOVE IN CAP ASSEMBLY.
4. PLACE NEW CAP ASSEMBLY ON VALVE AND TIGHTEN CAP NUT (21).
5. TURN SCREW (16) OF NEW CAP COUNTERCLOCKWISE UNTIL CONTACT IS MADE WITH UPPER DIAPHRAGM PLATE (13) WHILE IN CLOSED POSITION.

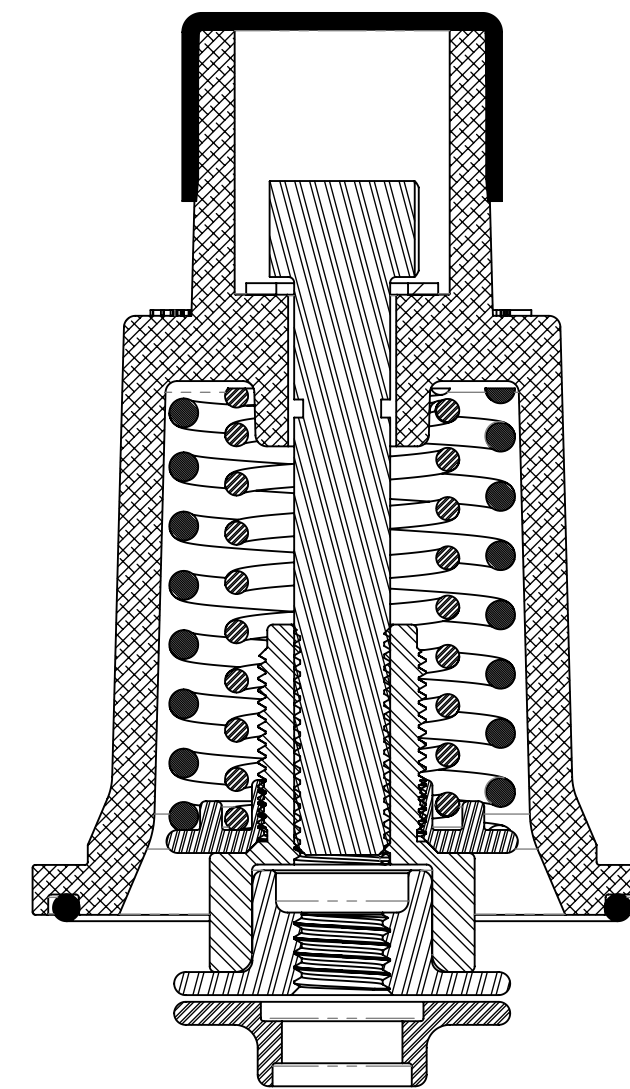
REVISIONS				
ECN	REV.	DESCRIPTION	DATE	APP'D
		SEE SHEET ONE FOR A LIST OF CHANGES.		



**1071263 (K531-FS3)
REPAIR KIT - 30#**



**1071264 (K531-FS6)
REPAIR KIT - 60#**



**1071262 (K531-FS1)
REPAIR KIT - 100#**

REPAIR KITS	
REPAIR KIT NO.	PART NUMBERS INCLUDED
1071263 (K531-FS3)	3,12,13,15,16,17,18,22,24
1071264 (K531-FS6)	3,6,12,13,15,16,17,18,22,24
1071262 (K531-FS1)	3,6,12,13,15,16,17,18,22,24

VALVE SERIES	30# FAILSAFE #TURNS UP FROM BOTTOM	60# FAILSAFE #TURNS UP FROM BOTTOM	100# FAILSAFE #TURNS UP FROM BOTTOM
531	7	0	9

NOTES:

1. REPAIR KIT IS TO BE SHIPPED TO CUSTOMER IN A FULLY COMPRESSED STATE.

THIS DOCUMENT IS SOLELY THE PROPERTY OF AQ-MATIC REPRODUCTION, USE DISCLOSURE, OR TRANSMISSION OF THIS DOCUMENT OR DETAILS CONTAINED HEREIN, IN PART OR IN WHOLE, IS PROHIBITED WITHOUT THE WRITTEN CONSENT OF AQ-MATIC ENGINEERING. THIS DOCUMENT AND ANY COPIES SHALL BE RETURNED TO AQ-MATIC UPON WRITTEN REQUEST.

DO NOT SCALE DRAWING. DIMS. ARE IN INCHES [mm] INTERPRET DIMS AND TOLERANCES PER ASME Y14.5M -1994 UNLESS OTHERWISE SPECIFIED:
CORNER FILLETS R.005-.020 [0.127-.508]
TOLERANCES:
ANGLES: ± 1°
1 PLACE .X: ± .100 [2.54]
2 PLACE .XX: ± .010 [0.25]
3 PLACE .XXX: ± .005 [0.13]

THE COMPONENT, PART, OR ASSEMBLY DESCRIBED IN THIS DOCUMENT MUST COMPLY WITH THE EU (EUROPEAN UNION) DIRECTIVE: RoHS DIRECTIVE 2011/65/EC.

THIRD ANGLE PROJECTION

APPROVALS: _____ DATE: _____

DRAWN: TMS DATE: 05/21/10

CHECKED BY: _____

APPROVED: _____

AQ-Matic AQ-MATIC VALVES AND CONTROLS

CATALOG SHEET, 531 FAILSAFE, VALVE

SIZE C DWG NO. 1084008 REV. T

SCALE 1:1 SOLIDWORKS FORMAT SHEET 2 OF 2