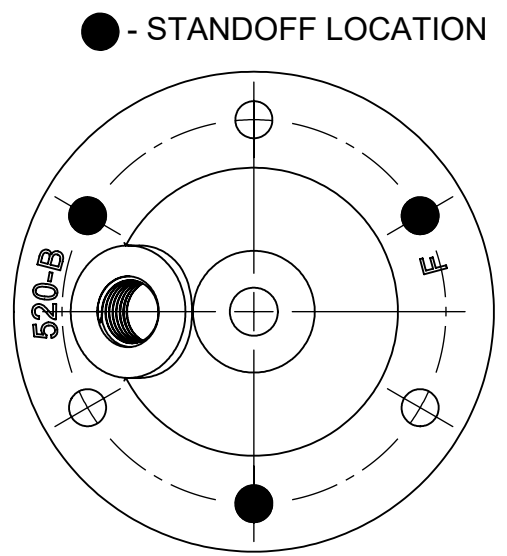
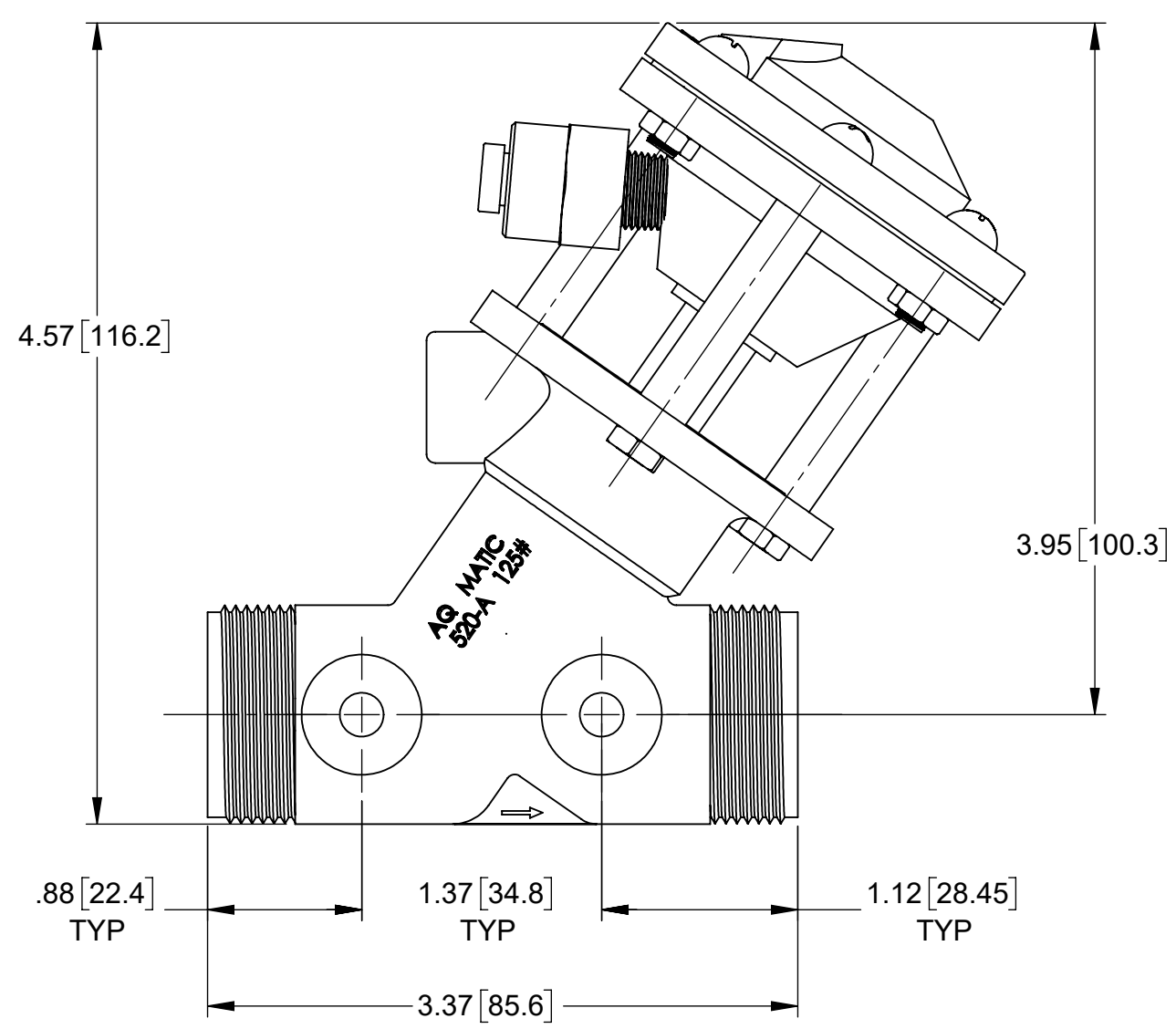


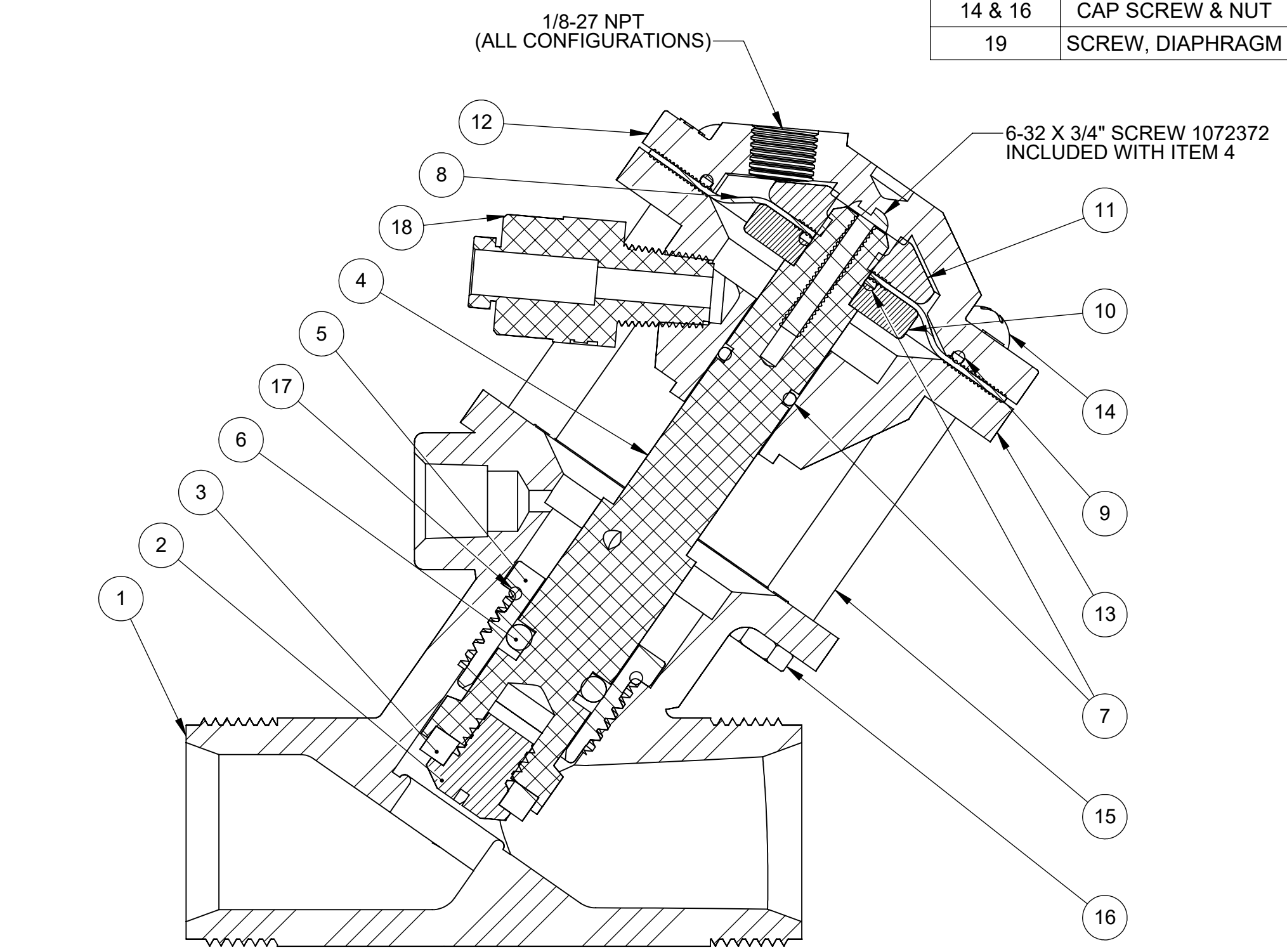
| REVISIONS | | | | |
|-----------|------|---|----------|-------|
| ECN | REV. | DESCRIPTION | DATE | APP'D |
| 102124 | J | REDRAWN IN SOLIDWORKS, FORM # NOW DWG #, WAS-1084013 | 06/25/13 | TJM |
| 1001 | K | AQ MATIC UPDATE & VERIFIED PART NUMBERS | 01/17/17 | MGS |
| 1431 | L | VERIFIED PART NUMBERS BOM | 02/19/19 | TRK |
| 1585 | M | LOGO UPDATE, REMOVE BR FROM DRW #, FIX MINOR ERRORS, ADD TORQUE TABLE | 11/14/19 | KJB |



| ASSEMBLY TOOLS | |
|--|----------|
| DESCRIPTION | PART NO. |
| FOR INSTALLATION AND REMOVAL OF SHAFT GUIDE & DIAPHRAGM PLATE (TOOL NOT SHOWN) | 1074989 |

| TORQUE TABLE | | |
|--------------|--------------------|----------------------|
| ITEM # | DESCRIPTION | TORQUED TO (+/- 10%) |
| 2 | SCREW, PLATE, DISC | 8 IN-LB |
| 5 | GUIDE, SHAFT | 32 IN-LB |
| 14 & 16 | CAP SCREW & NUT | 30 IN-LB |
| 19 | SCREW, DIAPHRAGM | 20 IN-LB |

| NORMALLY OPEN MODEL | | | | |
|---------------------|-----------------------------|--------|--------------------|------|
| ITEM NO. | DESCRIPTION | | PART NUMBER | QTY. |
| 1 | BODY, 520, VALVE | NORYL | 1074943 (520-AK) | 1 |
| 2 | SCREW, DISC, PLATE, 520 | NORYL | 1077903 | 1 |
| 3 | DISC | EPDM | 1074966 (520-J) | 1 |
| | | BUTYL | 1074967 (520-JJ) | |
| | | FKM | 1074968 (520-JV) | |
| 4 | SHAFT, K5520 | PVC | 1075335 (520-CD) | 1 |
| 5 | GUIDE, SHAFT, 520 | NORYL | 1074964 (520-GN) | 1 |
| 6 | O-RING, 2-204 | EPDM | 1071740 (ORE-204) | 1 |
| | | BUTYL | 1071774 (ORJ-204) | |
| | | FKM | 1071812 (ORV-204) | |
| 7 | O-RING, 2-012 | BUNA | 1071668 (ORB-012) | 2 |
| 8 | DIAPHRAGM, 520 | BUNA | 1074962 (520-FB) | 1 |
| 9 | O-RING, 2-030 | EPDM | 3015801 (ORE-030) | 1 |
| 10 | PLATE, DIAPHRAGM, LWR, 520 | PVC | 1075339 (5520-F) | 1 |
| 11 | PLATE, DIAPHRAGM, UPR, 520 | NORYL | 1074958 (520-DOK) | 1 |
| 12 | CAP, VALVE, 520 | NORYL | 1074948 (520-BOK) | 1 |
| 13 | BOTTOM CAP, 520 | PVC | 1075334 (5520-B) | 1 |
| 14 | SCREW, 10-32 X 5/8", RND HD | SS | 1072379 (SCS-0094) | 6 |
| 15 | STANDOFF | SS | 1075338 (5520-E) | 3 |
| 16 | HEX NUT, 10-32 | SS | 1071647 (NUS-0005) | 6 |
| | | EPDM | 1071720 (ORE-018) | |
| | | BUTYL | 1071762 (ORJ-018) | |
| 17 | O-RING, -018 | FKM | 1071790 (ORV-018) | 1 |
| | | ACETAL | 1078767 | |
| 18 | CONNECTOR, 1/8 MNPT X 1/4T | ACETAL | 1078767 | 1 |



| REPAIR PARTS KITS | | | |
|--|--|---|---|
| DESCRIPTION | PART NO. | | |
| DIAPHRAGM & SEALS KIT CONSISTS OF ITEM NO'S 3, 6, 7(2), 8, 9, 17 | 1075341 (5520-RAE) EPDM INCLUDES DIAPHRAGM 1074962 | 1075342 (5520-RAJ) BUTYL INCLUDES DIAPHRAGM 1074962 | 1075343 (5520-RAV) FKM INCLUDES DIAPHRAGM 1074962 |
| INTERNAL PARTS KIT (NORMALLY OPEN) CONSISTS OF ITEM NO'S 2, 4, 5, 10, 11 | 1071432 (K5520-RF) | | |

- SEE DRAWING 1081309 FOR UNION END CONNECTORS & GROOVED ADAPTORS
- SEE SHEET 2 FOR CONFIGURATION OPTIONS

**1071402 (K550-X200-1400)
NORMALLY OPEN (STANDARD)**

THIS DOCUMENT IS SOLELY THE PROPERTY OF AQ-MATIC REPRODUCTION, USE DISCLOSURE, OR TRANSMISSION OF THIS DOCUMENT OR DETAILS CONTAINED HEREIN, IN PART OR IN WHOLE, IS PROHIBITED WITHOUT THE WRITTEN CONSENT OF AQ-MATIC ENGINEERING. THIS DOCUMENT AND ANY COPIES SHALL BE RETURNED TO AQ-MATIC UPON WRITTEN REQUEST.

DO NOT SCALE DRAWING. DIMS. ARE IN INCHES [mm] INTERPRET DIMS AND TOLERANCES PER ASME Y14.5M -1994 UNLESS OTHERWISE SPECIFIED:
*CORNER FILLETS R.005-.020 [0.127-.508]
TOLERANCES:
ANGLES: ± 1°
1 PLACE .X: ± .100 [2.54]
2 PLACE .XX: ± .010 [0.25]
3 PLACE .XXX: ± .005 [0.13]

THIRD ANGLE PROJECTION

APPROVALS: [Signature] DATE: 06/25/13

DRAWN: MWL

CHECKED BY:

APPROVED:

THE COMPONENT, PART, OR ASSEMBLY DESCRIBED IN THIS DOCUMENT MUST COMPLY WITH THE EU (EUROPEAN UNION) DIRECTIVE: RoHS DIRECTIVE 2011/65/EC.

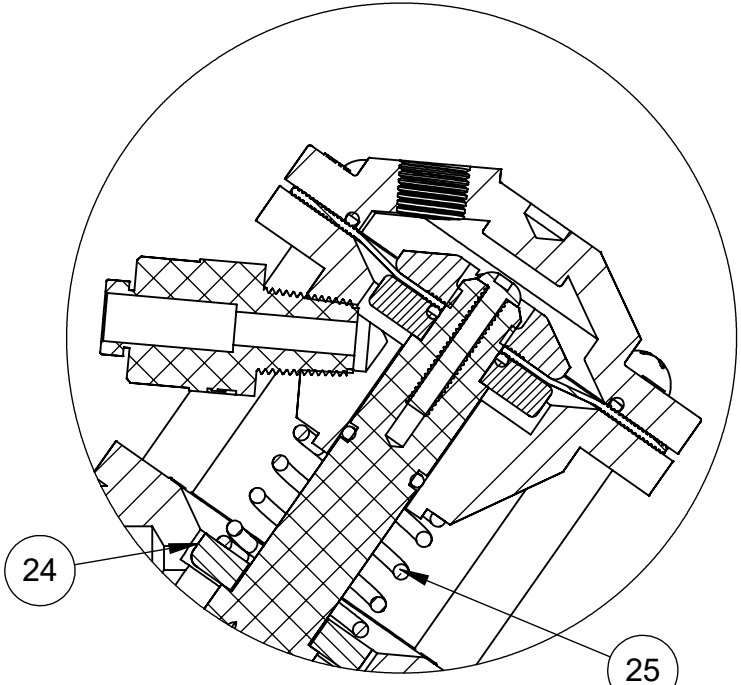
AQ Matic

CATALOG SHEET, 5520, VALVE

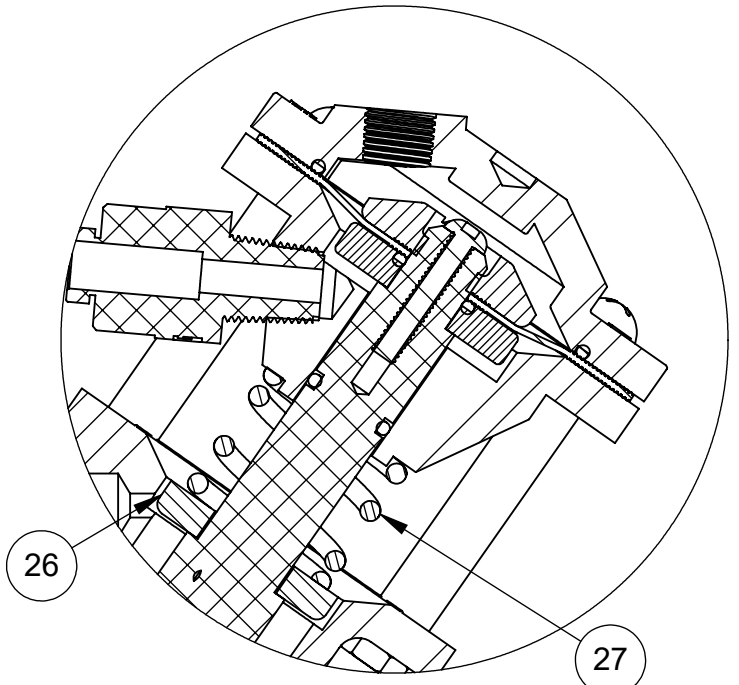
SIZE C DWG NO. 1077692 REV. M

SCALE 1:1 SOLIDWORKS FORMAT SHEET 1 OF 2

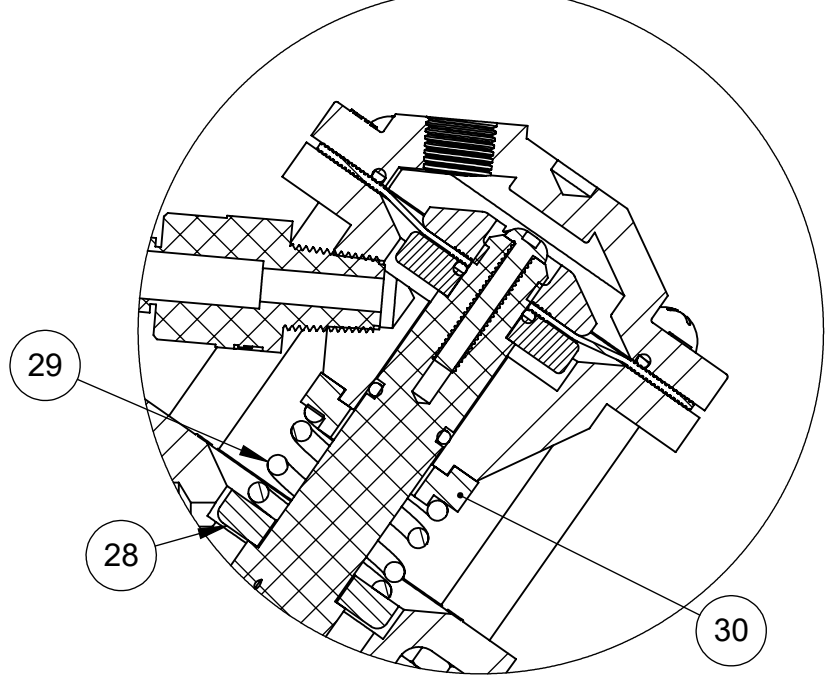
| REVISIONS | | | | |
|-----------|------|------------------------------------|------|-------|
| ECN | REV. | DESCRIPTION | DATE | APP'D |
| | | SEE SHEET 1 FOR A LIST OF CHANGES. | | |
| | | | | |
| | | | | |
| | | | | |



1071406 (K550-X203-14000)
FAILSAFE SPRING CLOSED 30 PSI



1071409 (K550-X204-14000)
FAILSAFE SPRING CLOSED 60 PSI



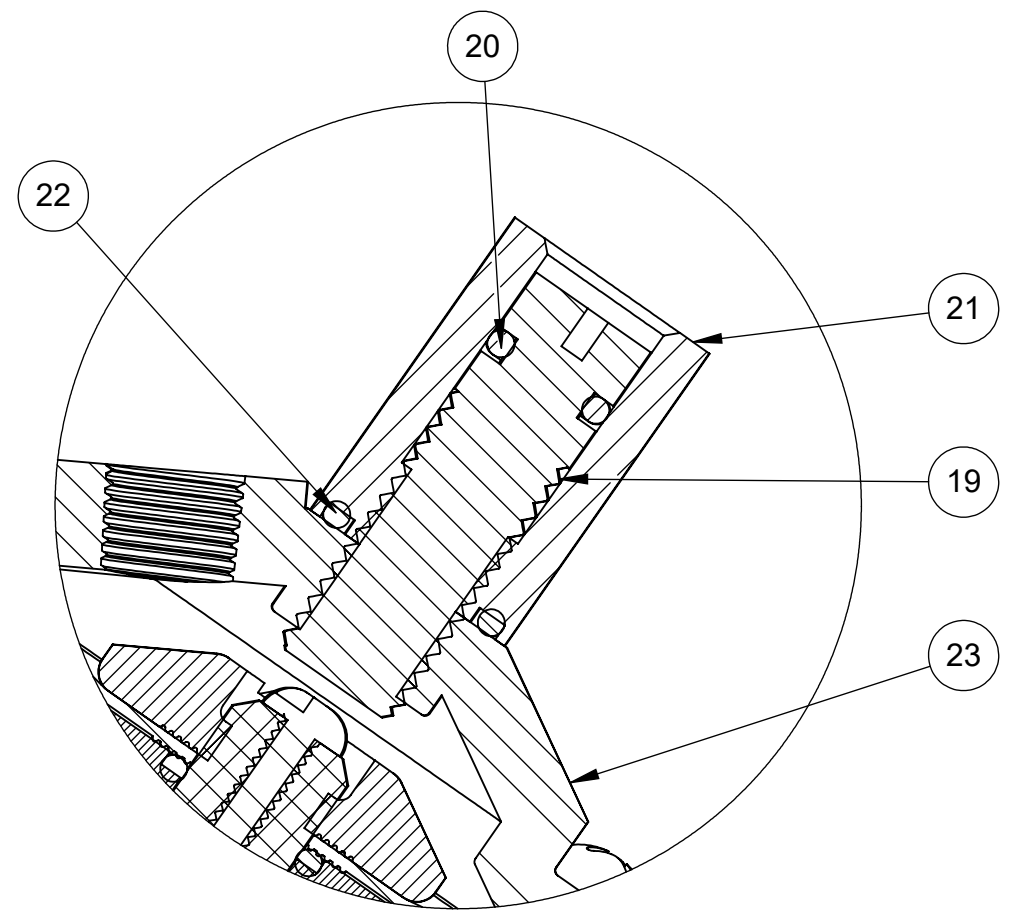
1071412 (K550-X205-14000)
FAILSAFE SPRING CLOSED 100 PSI

| LIMIT STOP MODEL | | | | |
|------------------|----------------|-------|--------------------|------|
| ITEM NO. | DESCRIPTION | | PART NUMBER | QTY. |
| 19 | SCREW, LS, 520 | SS | 1074988 (520-Y) | 1 |
| 20 | O-RING, 2-010 | BUNA | 1071667 (ORB-010) | 1 |
| 21 | NUT, LS, 520 | SS | 1074987 (520-X) | 1 |
| 22 | O-RING, 2-013 | BUNA | 1071669 (ORB-013) | 1 |
| 23 | CAP, LS, 520 | NORYL | 1074946 (520-BBOK) | 1 |

| FAILSAFE SPRING CLOSED - 30PSI | | | | |
|--------------------------------|-----------------------|----|-------------------|------|
| ITEM NO. | DESCRIPTION | | PART NUMBER | QTY. |
| 24 | RETAINER, SPRING, 520 | SS | 1075344 (5520-RK) | 1 |
| 25 | SPRING, COMPRESSION | SS | 3007473 (5520-SA) | 1 |

| FAILSAFE SPRING CLOSED - 60PSI | | | | |
|--------------------------------|-----------------------|----|-------------------|------|
| ITEM NO. | DESCRIPTION | | PART NUMBER | QTY. |
| 26 | RETAINER, SPRING, 520 | SS | 1075344 (5520-RK) | 1 |
| 27 | SPRING, COMPRESSION | SS | 1075053 (521-SA) | 1 |

| FAILSAFE SPRING CLOSED-100PSI | | | | |
|-------------------------------|-----------------------|----|-------------------|------|
| ITEM NO. | DESCRIPTION | | PART NUMBER | QTY. |
| 28 | RETAINER, SPRING, 520 | SS | 1075344 (5520-RK) | 1 |
| 29 | SPRING, COMPRESSION | SS | 1075053 (521-SB) | 1 |
| 30 | CENTERING COLLAR | SS | 1075337 (5520-D) | 1 |



3020566 (K550-X210-14000)
LIMIT STOP

| REPAIR PARTS KITS | |
|--|---------------------|
| DESCRIPTION | PART NO. |
| INTERNAL PARTS KIT (LIMIT STOP) CONTAINS ITEM NO'S 19 THRU 22 | 1074973 (520-LS) |

| CONVERSION KITS | |
|--|-----------------------|
| DESCRIPTION | PART NO. |
| CONVERSION PARTS KIT (LIMIT STOP) CONTAINS ITEM NO'S 19 THRU 23 | 1071056 (K520-LSC) |

NOTE:

- LIMIT STOP OPTION ONLY OFFERED ON FAILSAFE SPRING CLOSED MODELS.
- FAILSAFE OPTION NOT OFFERED IN CONVERSION KIT FORM DUE TO SPECIAL ASSEMBLY REQUIREMENTS.

- SEE DRAWING 1081309 FOR UNION END CONNECTORS & GROOVED ADAPTORS
- SEE SHEET 1 FOR STANDARD NORMALLY OPEN CONFIGURATION

THIS DOCUMENT IS SOLELY THE PROPERTY OF AQ-MATIC REPRODUCTION, USE DISCLOSURE, OR TRANSMISSION OF THIS DOCUMENT OR DETAILS CONTAINED HEREIN, IN PART OR IN WHOLE, IS PROHIBITED WITHOUT THE WRITTEN CONSENT OF AQ-MATIC ENGINEERING. THIS DOCUMENT AND ANY COPIES SHALL BE RETURNED TO AQ-MATIC UPON WRITTEN REQUEST.

DO NOT SCALE DRAWING. DIMS. ARE IN INCHES [mm]
INTERPRET DIMS AND TOLERANCES PER ASME Y14.5M -1994
UNLESS OTHERWISE SPECIFIED:
CORNER FILLETS R.005-.020 [0.127-.508]
TOLERANCES:
ANGLES: ± 1°
1 PLACE .X: ± .100 [2.54]
2 PLACE .XX: ± .010 [0.25]
3 PLACE .XXX: ± .005 [0.13]

THE COMPONENT, PART, OR ASSEMBLY DESCRIBED IN THIS DOCUMENT MUST COMPLY WITH THE EU (EUROPEAN UNION) DIRECTIVE: RoHS DIRECTIVE 2011/65/EC.

| | | |
|------------------------|-------------------|----------------------------|
| THIRD ANGLE PROJECTION | | |
| APPROVALS | DATE | CATALOG SHEET, 5520, VALVE |
| DRAWN MWL | 06/25/13 | |
| CHECKED BY | | |
| APPROVED | | |
| SIZE C | DWG NO. 1077692 | REV. M |
| SCALE 1:1 | SOLIDWORKS FORMAT | SHEET 2 OF 2 |