

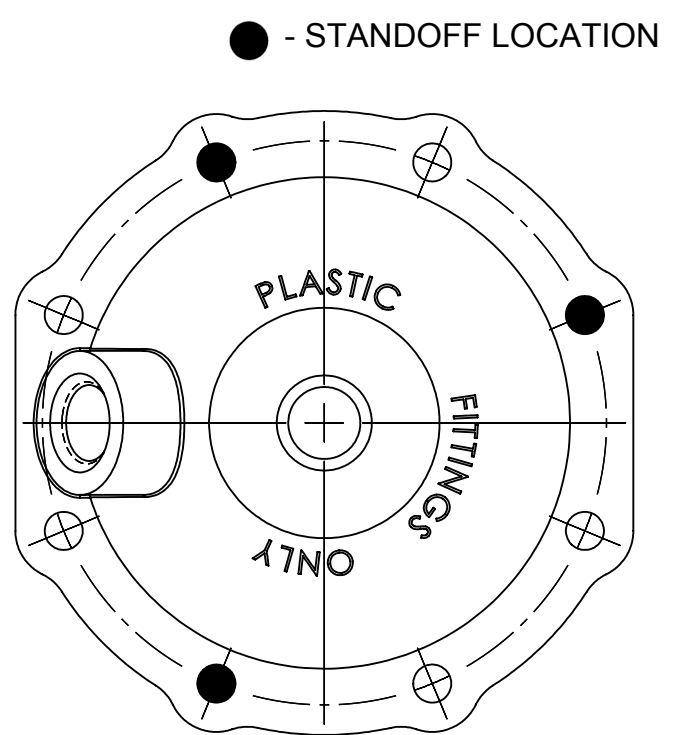
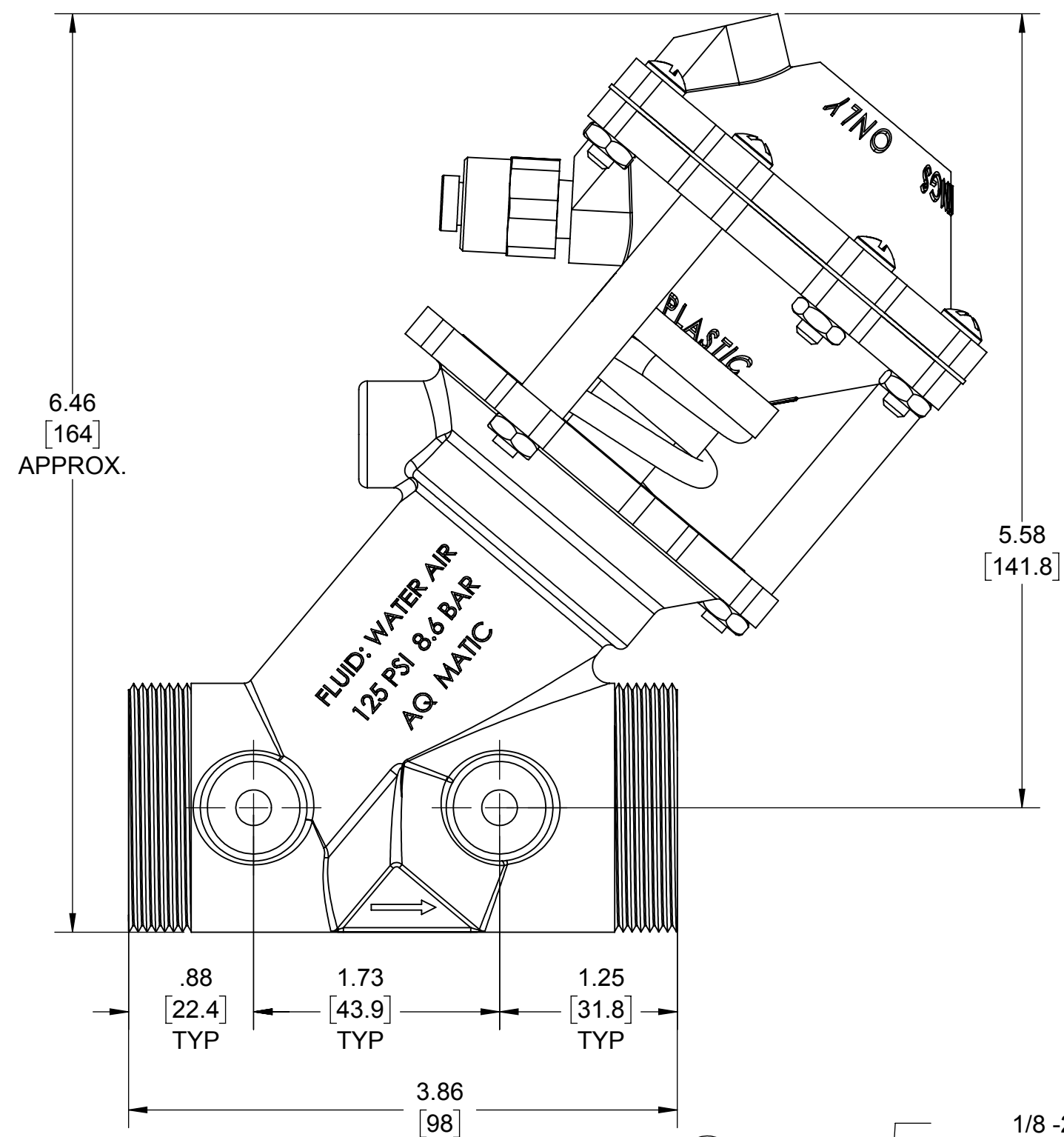
4

3

2

1

REVISIONS				
ECN	REV.	DESCRIPTION	DATE	APP'D
102658	H	REDRAWN IN SOLID WORKS: ITEM #1: WAS 1075007, ITEM #13: WAS 1075012, ITEM #14: WAS 1075348, ITEM #27: WAS 1075010, 5-FORM # NOW DWG #	10/31/13	TJM
103697	J	ITEM #20: WAS: 1071942, 1071943, 1071944	12/12/14	TJM
1001	K	AQ MATIC UPDATE & VERIFIED PART NUMBERS	01/16/17	MGs
1585	L	REMOVE BR FROM DRW #, FIX MINOR ERRORS, ADD TORQUE TABLE	11/14/19	KJB

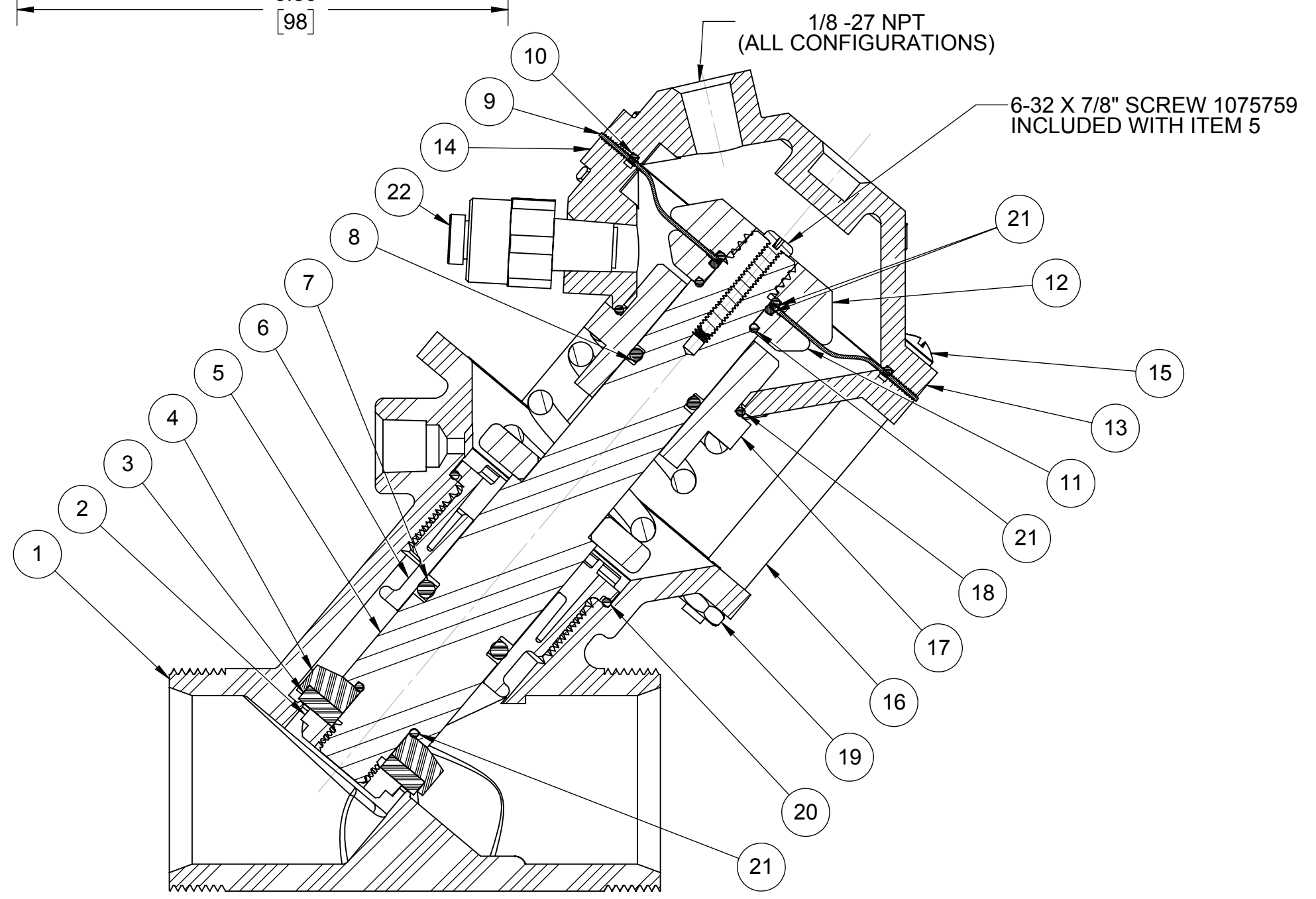


ASSEMBLY TOOLS	
DESCRIPTION	PART NO.
FOR INSTALL & REMOVAL OF SHAFT GUIDE & DIAPHRAGM PLATE (TOOL NOT SHOWN)	1075059 (521-Z)

TORQUE TABLE		
ITEM #	DESCRIPTION	TORQUED TO (+/- 10%)
2	NUT, DISC PLATE	10 IN-LB
15 & 19	CAP SCREW & NUT	30 IN-LB
6	GUIDE, SHAFT	32 IN-LB
25	DIAPHRAGM SCREW	35 IN-LB

ITEM NO.	DESCRIPTION	PART NUMBER	QTY.
1	BODY, 521, VALVE	NORYL 43476	1
2	NUT, DISC PLATE	PVC 1075358	1
3	DISC	EPDM 1075033	1
		BUTYL 1075034	
		FKM 1075036	
4	RETAINER, DISC	PVC 1075360	1
5	SHAFT, 5521	PVC 1075349	1
6	GUIDE, SHAFT, 521	NORYL 1075030	1
7	O-RING, 2-208	EPDM 1071743	1
		BUTYL 1071775	
		FKM 1071814	
8	O-RING, 2-112	BUNA 1071690	1
9	DIAPHRAGM, 521	BUNA 1075028	1
10	O-RING, 2-805	BUNA 1071715	1
11	PLATE, DIAPHRAGM, LWR, 5521	NORYL 43080	1
12	PLATE, DIAPHRAGM, UPR, 5521	NORYL 43081	1
13	CAP, VALVE, 521	NORYL 43477	1
14	CAP, LWR, 5521	NORYL 43725	1
15	SCREW, 10-32 X 3/4", RND HD	SS 1072380	8
16	STANDOFF	SS 1075354	3
17	GUIDE, SHAFT	PVC 1075357	1
18	O-RING, 2-025	BUNA 1071677	1
19	HEX NUT, 10-32	SS 1071648	8
20	O-RING, 2-029	EPDM 1081945	1
		BUTYL 43893	
		FKM 1081947	
21	O-RING, 2-014	EPDM 1071718	4
		BUTYL 1071760	
		FKM 1071788	
22	CONNECTOR, 1/8 MNPT X 1/4T	ACETAL 1078767	1
23	SPRING, COMPRESSION	SS 1075365	1

REPAIR PARTS KITS			
DESCRIPTION	PART NO.		
DIAPHRAGM & SEALS KIT CONSISTS OF ITEM NO'S 3, 7, 8, 9, 10, 18, 20, 21(4)	1075361 (5521-RAE) E.P.D.M. INCLUDES DIAPHRAGM 1075028 (521-FB)	1075362 (5521-RAJ) BUTYL INCLUDES DIAPHRAGM 1075028 (521-FB)	1075363 (5521-RAV) FKM INCLUDES DIAPHRAGM 1075028 (521-FB)
INT. PART KIT (NORM. OPEN) CONSISTS OF ITEM NO'S 2,4,5,6,11,12,17	1071433 (K5521-RF)		



- SEE DRAWING 1081309 FOR UNION END CONNECTORS & GROOVED ADAPTORS
- SEE SHEET 2 FOR CONFIGURATION OPTIONS

THIS DOCUMENT IS SOLELY THE PROPERTY OF AQ-MATIC REPRODUCTION, USE DISCLOSURE, OR TRANSMISSION OF THIS DOCUMENT OR DETAILS CONTAINED HEREIN, IN PART OR IN WHOLE, IS PROHIBITED WITHOUT THE WRITTEN CONSENT OF AQ-MATIC ENGINEERING. THIS DOCUMENT AND ANY COPIES SHALL BE RETURNED TO AQ-MATIC UPON WRITTEN REQUEST.

DO NOT SCALE DRAWING. DIMS. ARE IN INCHES [mm] INTERPRET DIMS AND TOLERANCES PER ASME Y14.5M -1994 UNLESS OTHERWISE SPECIFIED:
*CORNER FILLETS R.005-.020 [.127-.508]
TOLERANCES:
ANGLES: ± 1°
1 PLACE .X: ± .100 [2.54]
2 PLACE .XX: ± .010 [0.25]
3 PLACE .XXX: ± .005 [0.13]

THIRD ANGLE PROJECTION

APPROVALS: DRAWN: NE, CHECKED BY: APPROVED:

DATE: 08/29/12

THE COMPONENT, PART, OR ASSEMBLY DESCRIBED IN THIS DOCUMENT MUST COMPLY WITH THE EU (EUROPEAN UNION) DIRECTIVE: RoHS DIRECTIVE 2011/65/EC.

AQ Matic

CATALOG SHEET, 5521, VALVE

SIZE: C, DWG NO.: 1077693, REV.: L

SCALE: 1:1, SOLIDWORKS FORMAT, SHEET 1 OF 2

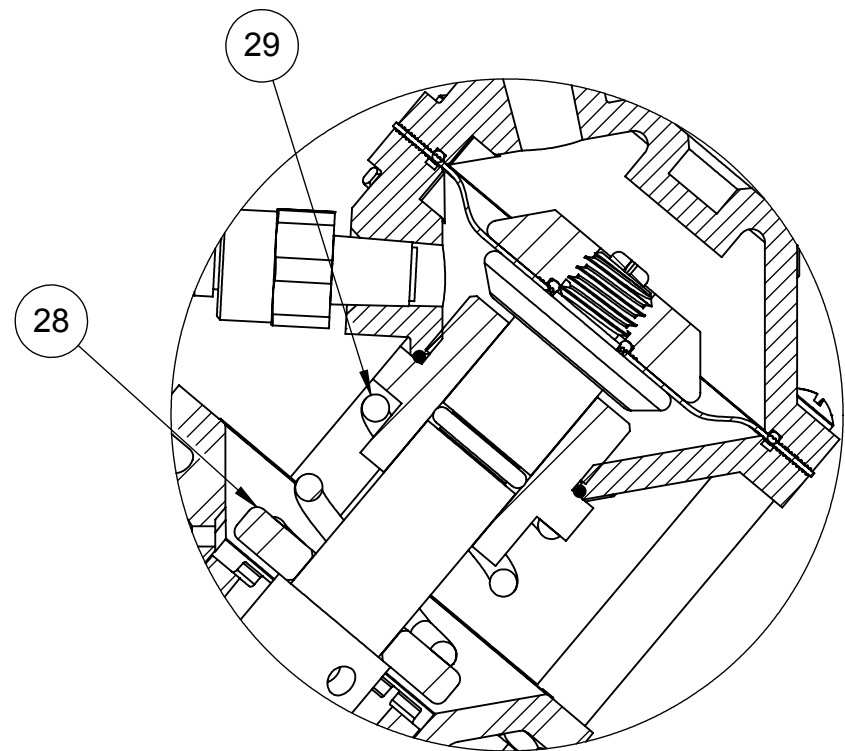
4

3

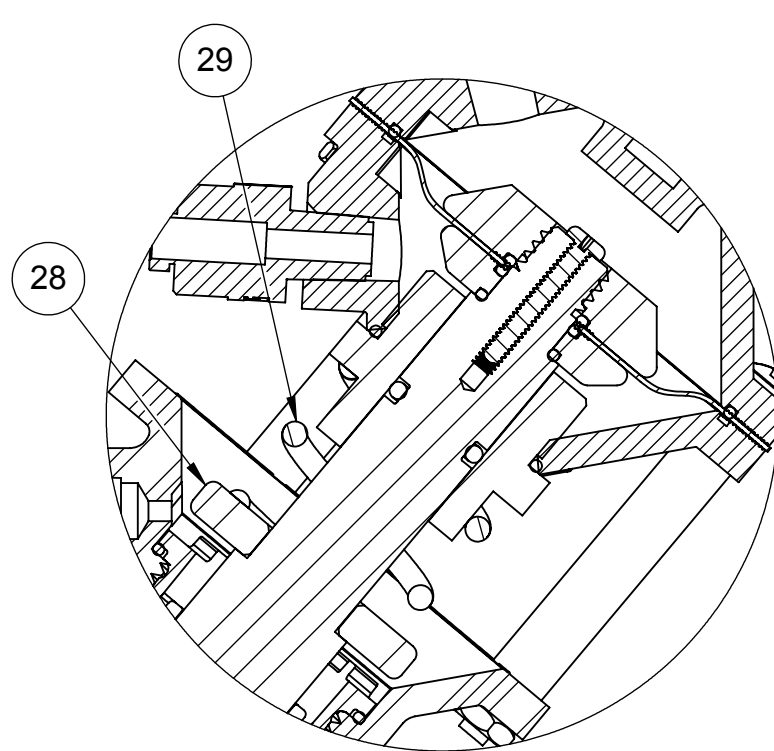
2

1

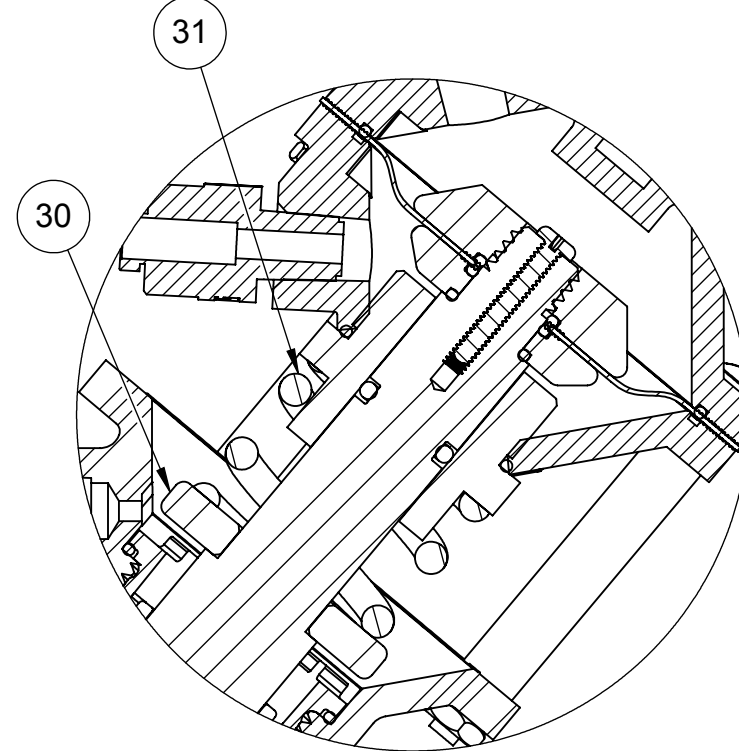
REVISIONS				
ECN	REV.	DESCRIPTION	DATE	APP'D
		SEE SHEET 1 FOR LIST OF CHANGES.		



1071423 (K551-X203-14000)
FAILSAFE SPRING CLOSED 30 PSI



1071424 (K551-X204-14000)
FAILSAFE SPRING CLOSED 60 PSI



1071427 (K551-X205-14000)
FAILSAFE SPRING CLOSED 100 PSI

LIMIT STOP MODEL

ITEM NO.	DESCRIPTION	PART NUMBER	QTY.
21	SCREW, LS, 521 SS	1075058	1
22	O-RING, 2-012 BUNA	1071668	1
23	NUT, LS, 521 SS	1075057	1
24	O-RING, 2-016 BUNA	1071671	1
25	CAP, LS, 521 NORYL	43724	1
36	SHAFT, 5521	1075349	1

FAILSAFE SPRING CLOSED - 30 PSI

ITEM NO.	DESCRIPTION	PART NUMBER	QTY.
26	RETAINER, SPRING PVC	1075351	1
29	SPRING, COMPRESSION SS	1075366	1
32	SHAFT, 5521	1075349	1

FAILSAFE SPRING CLOSED - 60 PSI

ITEM NO.	DESCRIPTION	PART NUMBER	QTY.
28	RETAINER, SPRING PVC	1075351	1
29	SPRING, COMPRESSION SS	1075370	1
32	SHAFT, 5521	1075349	1

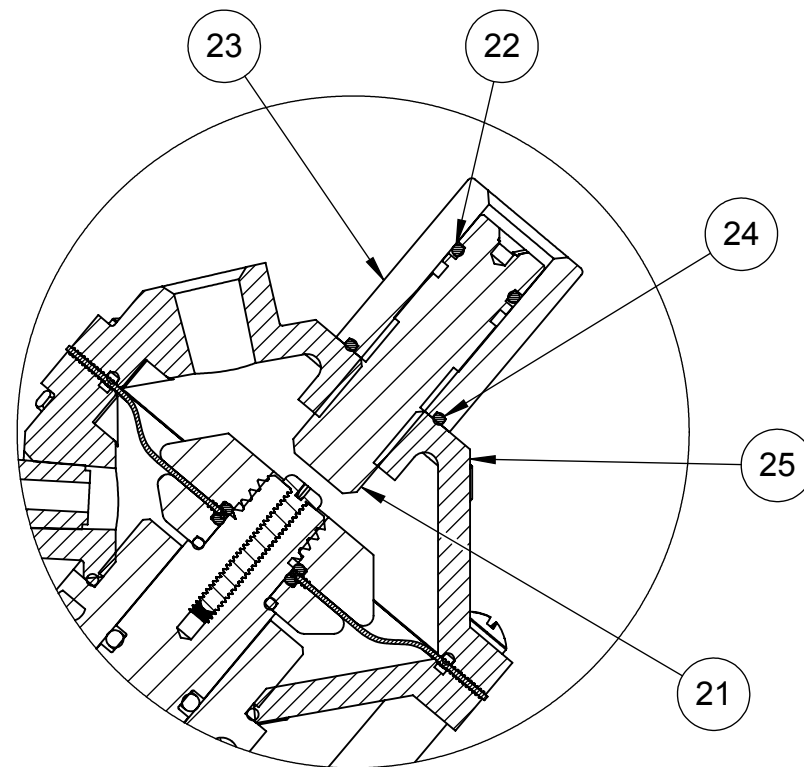
FAILSAFE SPRING CLOSED - 100 PSI

ITEM NO.	DESCRIPTION	PART NUMBER	QTY.
30	RETAINER, SPRING PVC	1075351	1
31	SPRING, COMPRESSION SS	1075365	1
32	SHAFT, 5521	1075349	1

NOTE:

- LIMIT STOP OPTION ONLY OFFERED ON FAIL SAFE SPRING CLOSED MODELS.
- FAILSAFE OPTION NOT OFFERED IN CONVERSION KIT FORM DUE TO SPECIAL ASSEMBLY REQUIREMENTS.
- COMPONENTS/ASSEMBLIES TO BE COMPLIANT AND COMPATIBLE WITH EUROPEAN UNION DIRECTIVE 2002/95/EEC (RoHS) REQUIREMENTS.

- SEE DRAWING 1081309 FOR UNION END CONNECTORS & GROOVED ADAPTORS
- SEE SHEET 1 FOR STANDARD NORMALLY OPEN CONFIGURATION



1079761 (K551-X210-14000)
LIMIT STOP

REPAIR PARTS KITS	
DESCRIPTION	PART NO.
INT. PARTS KIT (LIMIT STOP) CONSIST OF ITEM NO'S 23 THRU 26	1075040 (521-LS)

CONVERSION KITS	
DESCRIPTION	PART NO.
CONVERSION PARTS KIT (LIMIT STOP) CONSISTS OF ITEM NO'S 23 THRU 27	1071090 (K521-LSC)

THIS DOCUMENT IS SOLELY THE PROPERTY OF AQ-MATIC REPRODUCTION, USE DISCLOSURE, OR TRANSMISSION OF THIS DOCUMENT OR DETAILS CONTAINED HEREIN, IN PART OR IN WHOLE, IS PROHIBITED WITHOUT THE WRITTEN CONSENT OF AQ-MATIC ENGINEERING. THIS DOCUMENT AND ANY COPIES SHALL BE RETURNED TO AQ-MATIC UPON WRITTEN REQUEST.

DO NOT SCALE DRAWING. DIMS. ARE IN INCHES [mm] INTERPRET DIMS AND TOLERANCES PER ASME Y14.5M -1994 UNLESS OTHERWISE SPECIFIED:
CORNER FILLETS R.005-.020 [0.127-.508]
TOLERANCES:
ANGLES: ± 1°
1 PLACE .X: ± .100 [2.54]
2 PLACE .XX: ± .010 [0.25]
3 PLACE .XXX: ± .005 [0.13]

THE COMPONENT, PART, OR ASSEMBLY DESCRIBED IN THIS DOCUMENT MUST COMPLY WITH THE EU (EUROPEAN UNION) DIRECTIVE: RoHS DIRECTIVE 2011/65/EC.

THIRD ANGLE PROJECTION		
APPROVALS	DATE	CATALOG SHEET, 5521, VALVE
DRAWN	08/29/12	
CHECKED BY		
APPROVED		SIZE C DWG NO. 1077693 REV. L
SCALE 1:1		SOLIDWORKS FORMAT SHEET 2 OF 2