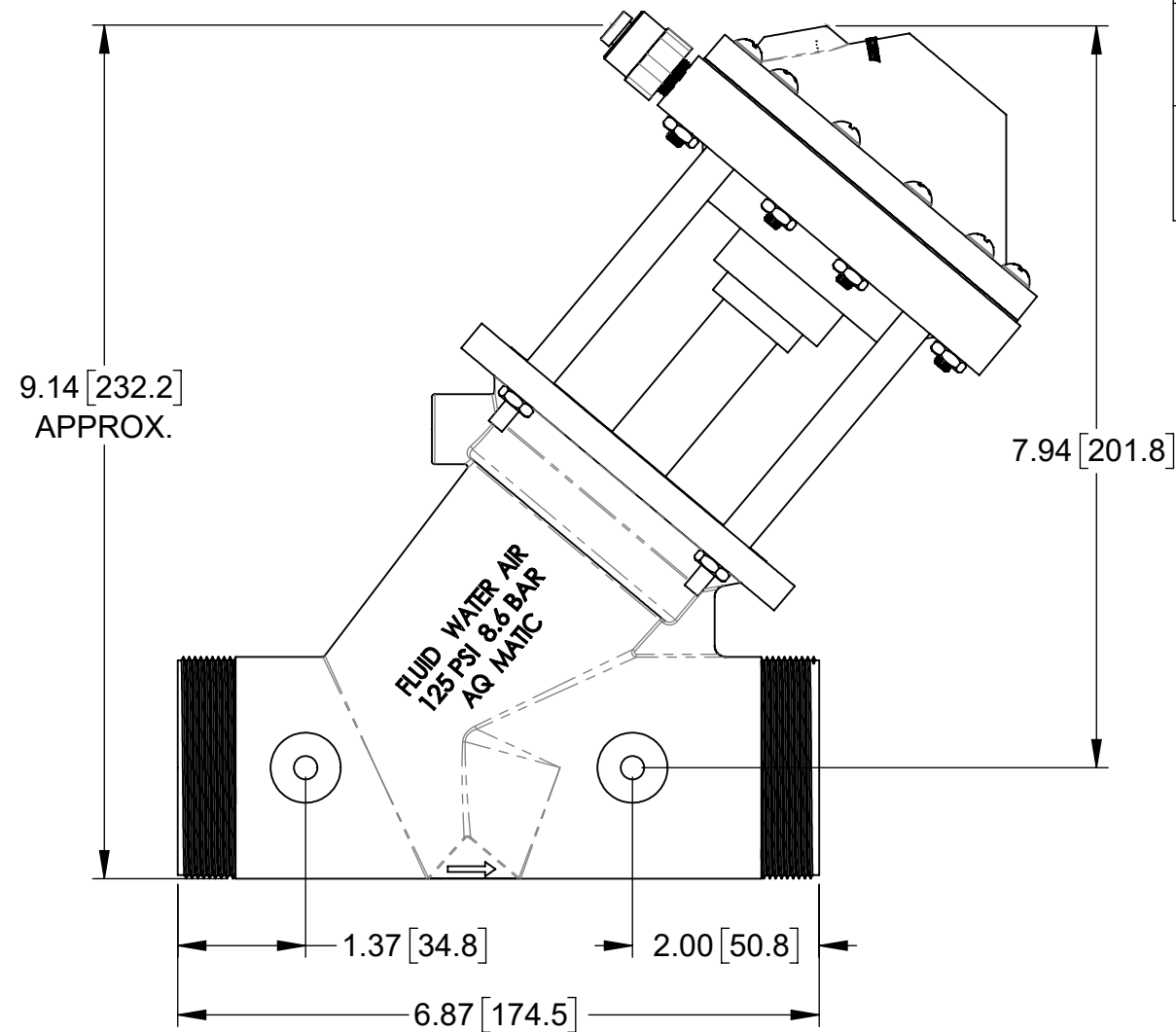


REPAIR PARTS KITS			
DESCRIPTION	PART NO.		
DIAPHRAGM & SEALS KIT CONSISTS OF ITEM NO'S 3,7, 8, 9, 17, 19, 20, 21, 23	1075377 EPDM INCLUDES DIAPHRAGM 1075377	1075378 BUTYL INCLUDES DIAPHRAGM 1075104	1075379 FKM INCLUDES DIAPHRAGM 1075104
INTERNAL PARTS KIT CONSISTS OF ITEM NO'S 2, 4, 5, 6, 10, 11, 16	1071434		

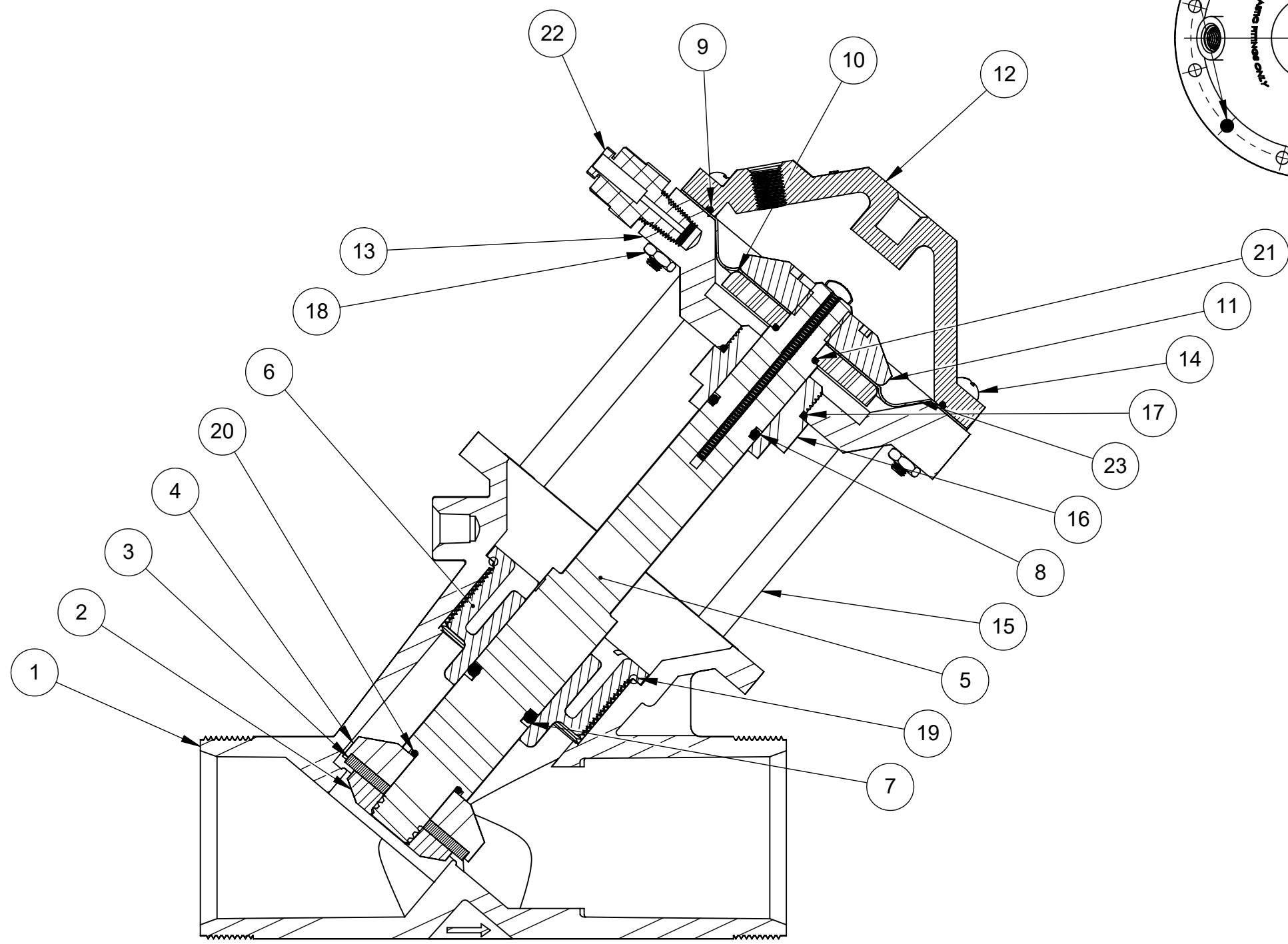
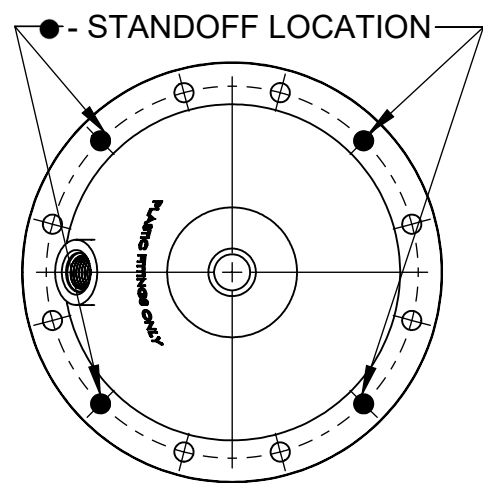
REVISIONS				
ECN	REV.	DESCRIPTION	DATE	APP'D
102135	H	REDRAWN IN SOLIDWORKS, FORM # NOW DWG # (WAS-1084015)	06/27/13	TJM
1001	J	AQ MATIC UPDATE & VERIFIED PART NUMBERS	01/17/17	MGs
1959	K	REMOVE BR FROM DRW #, FIX MINOR ERRORS, ADD TORQUE TABLE	10/12/21	KJB/TRK



TORQUE TABLE		
ITEM #	DESCRIPTION	TORQUED TO (+/- 10%)
2	PLATE, DISC	24 IN-LB
14 & 18	CAP SCREW & NUT	30 IN-LB
6	GUIDE, SHAFT	80 IN-LB

ASSEMBLY TOOLS	
DESCRIPTION	PART NO.
FOR INSTALL & REMOVAL OF SHAFT GUIDE & DIAPHRAGM PLATE (TOOL NOT SHOWN)	1075143
FOR SHAFT WHEN INSTALL. OR REMOVING DIAPHRAGM PLATE (TOOL NOT SHOWN)	1075060

NORMALLY OPEN MODEL				
ITEM NO.	DESCRIPTION		PART NUMBER	QTY.
1	BODY, VALVE, 524	NORYL	1075079 (524-AK)	1
2	PLATE, DISC, 524	NORYL	1076198	1
3	DISC	EPDM	1075107 (524-J)	1
		BUTYL	1075108 (524-JJ)	
		FKM	1075109 (524-JV)	
4	HOLDER, DISC, 5524	NORYL	1075121 (524-RK)	1
5	SHAFT, SERIES 5524	PVC	1075372 (5524-CA)	1
6	GUIDE SHAFT, SERIES 5524	NORYL	1075106 (524-GK)	1
7	O-RING, 2-210	EPDM	1071744 (ORE-210)	1
		BUTYL	1071776 (ORJ-210)	
		FKM	1071815 (ORV-210)	
8	O-RING, 2-113	EPDM	1071728 (ORE-113)	1
9	O-RING, 2-043	NITRILE	1071686 (ORB-043)	1
10	PLATE, DIAPHRAGM, 5524, LOWER	NORYL	1075375 (5524-FK)	1
11	PLATE, DIAPHRAGM, 5524, UPPER	NORYL	1075101 (524-DDK)	1
12	CAP, 524, VALVE	NORYL	1075086	1
13	CAP, STANDARD BOTTOM	PVC	1075371 (5524-BB)	1
14	SCREW, 10-32 X 1 1/4" RND HD	SS	1072382 (SCS-0098)	12
15	STANDOFF, 5524	SS	1075374 (5524-E)	4
16	BUSHING, GUIDE	DELFIN	1075376 (5524-G)	1
17	O-RING, 2-025	NITRILE	1071677 (ORB-025)	1
18	HEX NUT, 10-32	SS	1071648 (NUS-0006)	12
19	O-RING, 2-137	EPDM	1071735 (ORE-137)	1
		BUTYL	1071771 (ORB-137)	
		FKM	1071807 (ORV-137)	
20	O-RING, 2-016	EPDM	1071719 (ORE-016)	1
		BUTYL	1071761 (ORB-016)	
		FKM	1071789 (ORV-016)	
21	O-RING, 2-015	NITRILE	1071670 (ORB-015)	1
22	CONNECTOR, 1/8 MNPT X 1/4T	ACETAL	1078767	1
23	DIAPHRAGM, 524	NITRILE	1078393 (524-FB)	1



1071435 (K554-X200-14000)
NORMALLY OPEN

- SEE DRAWING 1081309 FOR UNION END CONNECTORS & GROOVED ADAPTORS
- SEE SHEET 2 FOR CONFIGURATION OPTIONS

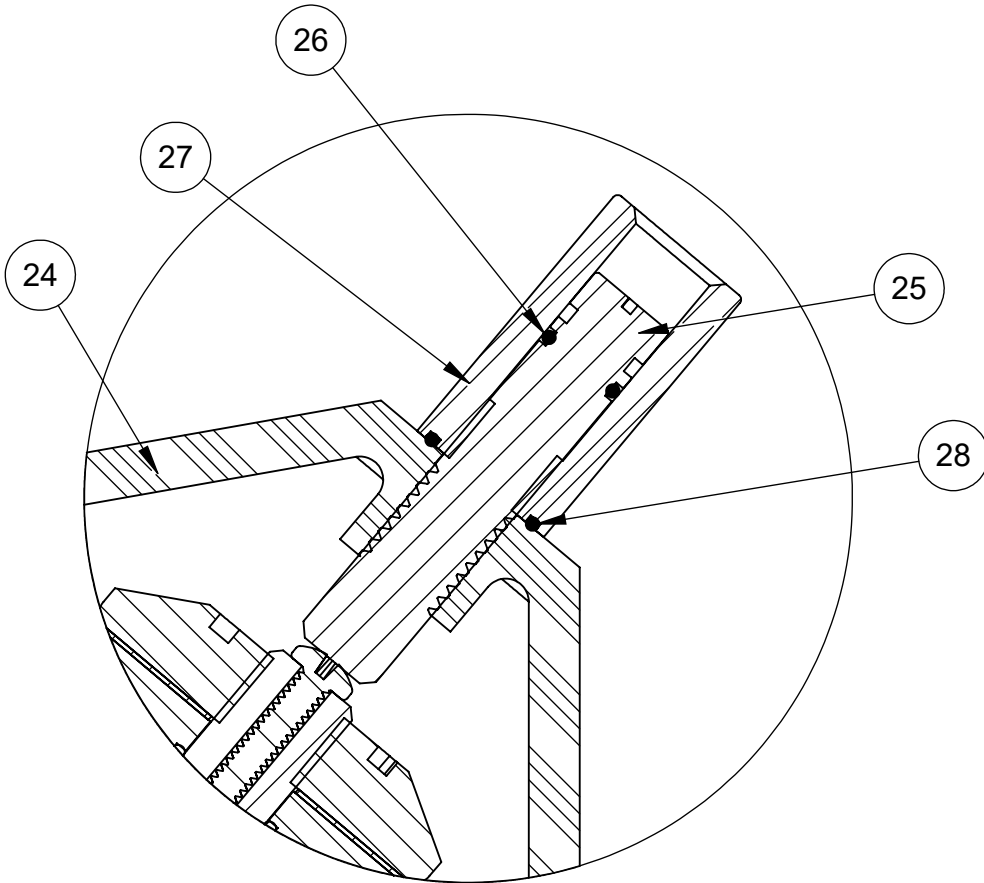
THIS DOCUMENT IS SOLELY THE PROPERTY OF AQ-MATIC REPRODUCTION, USE DISCLOSURE, OR TRANSMISSION OF THIS DOCUMENT OR DETAILS CONTAINED HEREIN, IN PART OR IN WHOLE, IS PROHIBITED WITHOUT THE WRITTEN CONSENT OF AQ-MATIC ENGINEERING. THIS DOCUMENT AND ANY COPIES SHALL BE RETURNED TO AQ-MATIC UPON WRITTEN REQUEST.

DO NOT SCALE DRAWING. DIMS. ARE IN INCHES [mm]
INTERPRET DIMS AND TOLERANCES PER ASME Y14.5M -1994
UNLESS OTHERWISE SPECIFIED:
CORNER FILLETS R.005-.020 [0.127-.508]
TOLERANCES:
ANGLES: ± 1°
1 PLACE .X: ± .100 [2.54]
2 PLACE .XX: ± .010 [0.25]
3 PLACE .XXX: ± .005 [0.13]

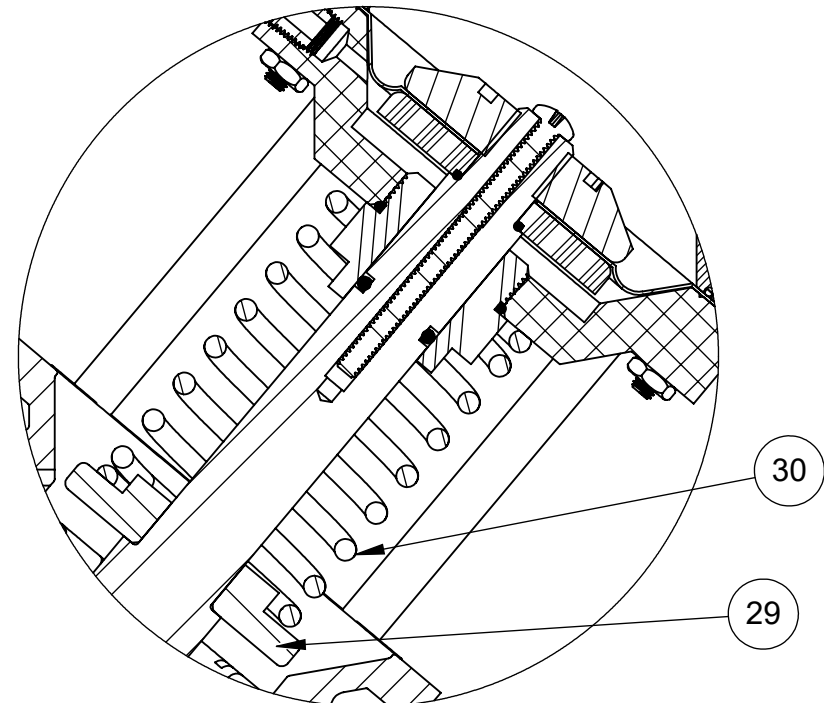
THE COMPONENT, PART, OR ASSEMBLY DESCRIBED IN THIS DOCUMENT MUST COMPLY WITH THE EU (EUROPEAN UNION) DIRECTIVE: RoHS DIRECTIVE 2011/65/EC.

THIRD ANGLE PROJECTION		
APPROVALS	DATE	CATALOG SHEET, 5524, VALVE
DRAWN MWL	06/27/13	
CHECKED BY		SIZE C DWG NO. 1077694 REV. K
APPROVED		SCALE 1:2 SOLIDWORKS FORMAT SHEET 1 OF 2

REVISIONS				
ECN	REV.	DESCRIPTION	DATE	APP'D
		SEE SHEET 1 FOR LIST OF CHANGES		



4500167 (K554-X210-14000)
LIMIT STOP



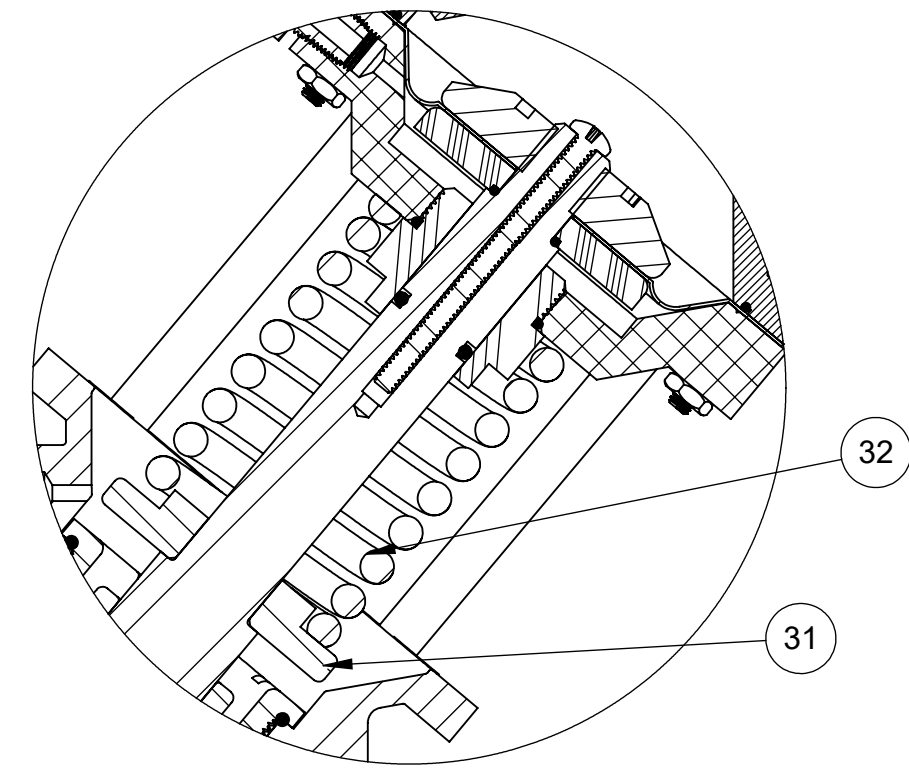
1071438 (K554-X203-14000)
FAILSAFE SPRING CLOSED 30 PSI

LIMIT STOP MODEL				
ITEM NO.	DESCRIPTION		PART NUMBER	QTY.
24	CAP, LIMIT STOP, 524	NORYL	1075083 (524-BBOK)	1
25	LIMIT STOP SCREW	SS	1075142 (524-Y)	1
26	O-RING, 2-012	BUNA	1071668 (ORB-012)	1
27	LIMIT STOP NUT	SS	1075141 (524-X)	1
28	O-RING, 2-016	BUNA	1071671 (ORB-016)	1

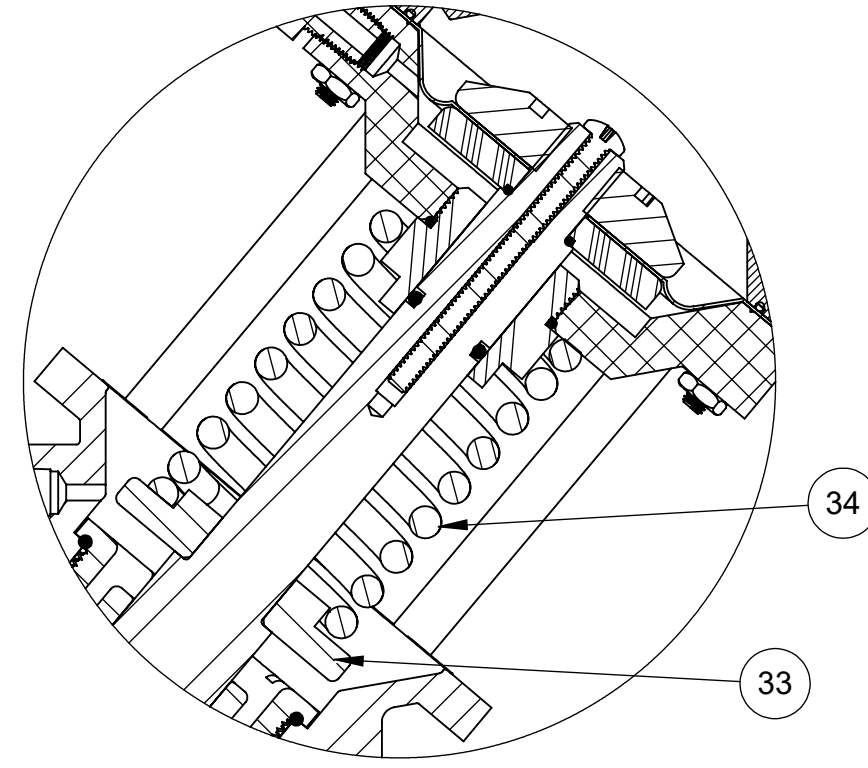
FAILSAFE SPRING CLOSED - 30PSI				
ITEM NO.	DESCRIPTION		PART NUMBER	QTY.
29	SPRING RETAINER	PVC	1075373 (5524-DD)	1
30	SPRING, COMPRESSION	SS	1077981	1

FAILSAFE SPRING CLOSED - 60PSI				
ITEM NO.	DESCRIPTION		PART NUMBER	QTY.
31	SPRING RETAINER	PVC	1075373 (5524-DD)	1
32	SPRING, COMPRESSION	SS	1267397 (4424-S)	1

FAILSAFE SPRING CLOSED - 100PSI				
ITEM NO.	DESCRIPTION		PART NUMBER	QTY.
33	SPRING RETAINER	PVC	1075373 (5524-DD)	1
34	SPRING, COMPRESSION	SS	1077983	1



1071439 (K554-X204-14000)
FAILSAFE SPRING CLOSED 60 PSI



1071442 (K554-X205-14000)
FAILSAFE SPRING CLOSED 100 PSI

- NOTE:
- LIMIT STOP OPTION ONLY OFFERED ON FAIL SAFE SPRING CLOSED MODELS.
 - FAILSAFE OPTION NOT OFFERED IN CONVERSION KIT FORM DUE TO SPECIAL ASSEMBLY REQUIREMENTS.
 - LIMIT STOP CONVERSION KITS NOT OFFERED DUE TO FAIL SAFE OPTION ASSEMBLY REQUIREMENTS.

- SEE DRAWING 1081309 FOR UNION END CONNECTORS & GROOVED ADAPTORS
- SEE SHEET 1 FOR STANDARD NORMALLY OPEN CONFIGURATION

<small>THIS DOCUMENT IS SOLELY THE PROPERTY OF AQ-MATIC. REPRODUCTION, USE, DISCLOSURE, OR TRANSMISSION OF THIS DOCUMENT OR DETAILS CONTAINED HEREIN, IN PART OR IN WHOLE, IS PROHIBITED WITHOUT THE WRITTEN CONSENT OF AQ-MATIC ENGINEERING. THIS DOCUMENT AND ANY COPIES SHALL BE RETURNED TO AQ-MATIC UPON WRITTEN REQUEST.</small>		<small>THE COMPONENT, PART, OR ASSEMBLY DESCRIBED IN THIS DOCUMENT MUST COMPLY WITH THE EU (EUROPEAN UNION) DIRECTIVE: RoHS DIRECTIVE 2011/65/EC.</small>	
THIRD ANGLE PROJECTION 			
APPROVALS	DATE	CATALOG SHEET, 5524, VALVE	
DRAWN MWL	06/27/13	SIZE C	DWG NO. 1077694
CHECKED BY		SCALE 1:2	REV. K
APPROVED		SOLIDWORKS FORMAT	SHEET 2 OF 2