

4

3

2

1

REPAIR PARTS KITS

ASSEMBLY TOOLS

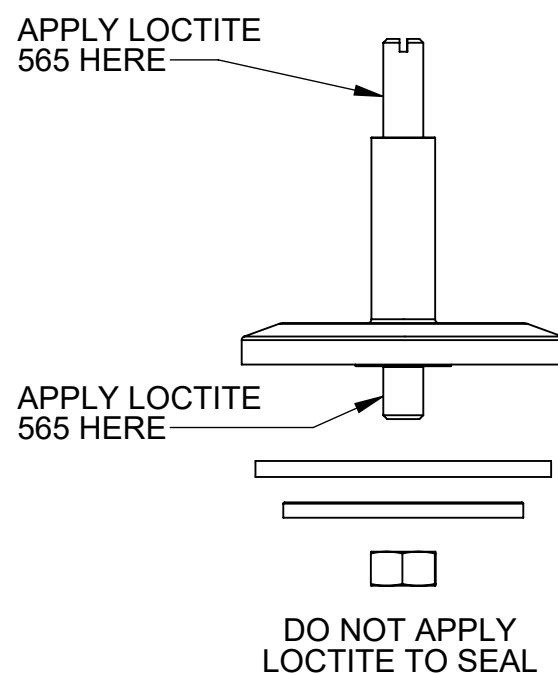
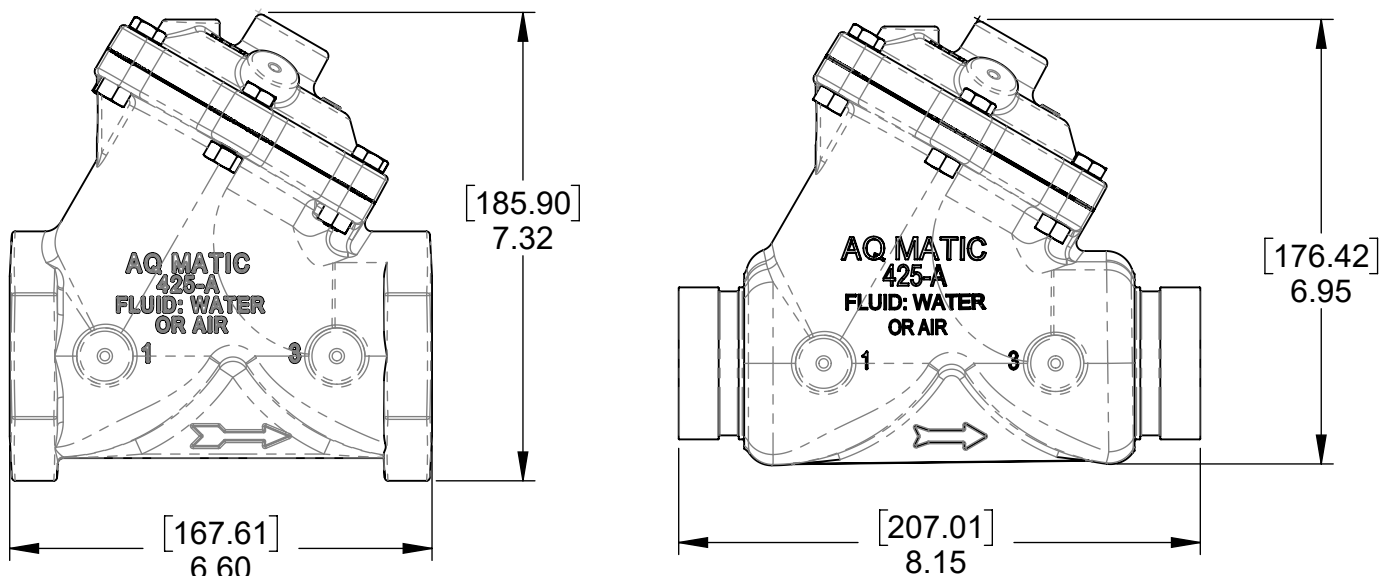
REVISIONS

DESCRIPTION	PART NO.		
DIAPHRAGM & SEALS KIT CONSISTS OF ITEM NO'S 3, 4(2), 6, 7, 8, 9(2),14	1070070 (425-RA)	1070083 (425-RAE)	1070095 (425-RAV)
	BUNA N INCLUDES DIAPHRAGM 1074296 (425-FB)	E.P.D.M. INCLUDES DIAPHRAGM 1074296 (425-FB)	FKM INCLUDES DIAPHRAGM 1074297 (425-FV)
INT. PARTS KIT (NORM. OPEN) CONSISTS OF STANDARD ITEM NO'S 2, 5,13(2),16	1070120 (425-RF)		
SEAT (ITEM NO.12)	1074321 (425-MO)		

DESCRIPTION	PART NO.
FOR INSTALLATION & REMOVAL OF SEAT (ITEM #12) (TOOL NOT SHOWN)	1074411 (426-MT)
FOR INSTALLATION & REMOVAL OF SHAFT GUIDE (ITEM #16) (1.125" SOCKET DRIVER)	1074299 (425-GAT)

ECN	REV.	DESCRIPTION	DATE	APPROVED
2220	AA	CATALOG SHEET UPDATE	4/4/2023	TRK

***1074299 - SPANNER WRENCH TOOL USED ON SHAFT GUIDES MADE BETWEEN 2014 AND 2018. AFTER 2018 THE 1.125" SOCKET IS REQUIRED.**



ITEM#	DESCRIPTION	TORQUE TO (±10%)
12	SEAT	120 IN/LBS
4	UPPER NUT	140 IN/LBS
4	LOWER NUT	140 IN/LBS
16	SHAFT GUIDE	120 IN/LBS
10&11	NUT, BOLT	140 IN/LBS

- NOTE:
- AMERICAN NATIONAL STANDARD TAPER PIPE THREADS (NPT) PER ANSI B2.1-1968.
 - VALVES AVAILABLE WITH B.S.P.T. END CONNECTIONS.
 - CLAMP VALVE DESIGN STANDARD AWWA C606-15 IPS CUT GROOVE DESIGN

ITEM NO.	DESCRIPTION	STD.	PART NUMBER	QTY.	
1	MACHINE VALVE BODY, 425	2" NPT	CAST IRON	* 1074277 (425-A)	1
		2" BSP	CAST IRON	1074278 (425-A-BSP)	
		2" PIPE	CAST IRON	4510482	
2	COMBO SHAFT, NORMALLY OPEN	STAINLESS	* 44017 (425-L)	1	
3	COPPER GASKET	COPPER	* 1074252 (424-R)	1	
4	HEX NUT (5/16"-24)	STAINLESS	* 1263853 (RMET)	2	
5	DISC PLATE	STAINLESS	* 43943	1	
6	DISC, 425	BUNA	* 1074307 (425-J)	1	
		E.P.D.M	1074309 (425-JE)		
		FKM	1074312 (425-JV)		
		HYCAR	1074310 (425-JH)		
7	O-RING 2-038	BUNA	* 1071684 (ORB-038)	1	
		E.P.D.M	1071725 (ORE-038)		
		FKM	1071795 (ORV-038)		
8	O-RING 2-035	BUNA	* 1071682 (ORB-035)	1	
		E.P.D.M	1071724 (ORE-035)		
		FKM	1071794 (ORV-035)		
9	O-RING 2-206	BUNA	* 1071699 (ORB-206)	2	
		E.P.D.M	1239009 (ORE-206)		
		FKM	1239008 (ORV-206)		
10	HEX SCREW 5/16"-18	PLATED STEEL	* 1072400 (SCZ-0013)	6	
11	HEX NUT 5/16"-18	PLATED STEEL	* 1071657 (NUZ-0011)	6	
12	SEAT (ASSY TOOL REQUIRED)	BRASS	* 1074321 (425-MO)	1	
13	DIAPHRAGM / DISC PLATE	STAINLESS	* 4510417	2	
		BUNA	* 1074296 (425-FB)		
14	DIAPHRAGM	FKM	1074297 (425-FV)	1	
		BUNA	* 1074296 (425-FB)		
15	CAP, 425, NPT	CAST IRON	* 1074281 (425-C)	1	
16	SHAFT GUIDE (ASSY TOOL REQUIRED)	STAINLESS	* 43848	1	

SEE REVERSE SIDE CONFIGURATION OPTIONS

THE COMPONENT, PART, OR ASSEMBLY DESCRIBED IN THIS DOCUMENT MUST COMPLY WITH THE EU (EUROPEAN UNION) DIRECTIVE: RoHS DIRECTIVE 2011/65/EC.

THIS DOCUMENT IS SOLELY THE PROPERTY OF AQ-MATIC REPRODUCTION, USE DISCLOSURE, OR TRANSMISSION OF THIS DOCUMENT OR DETAILS CONTAINED HEREIN, IN PART OR IN WHOLE, IS PROHIBITED WITHOUT THE WRITTEN CONSENT OF AQ-MATIC ENGINEERING. THIS DOCUMENT AND ANY COPIES SHALL BE RETURNED TO AQ-MATIC UPON WRITTEN REQUEST.

DO NOT SCALE DRAWING. DIMS. ARE IN INCHES [mm] INTERPRET DIMS AND TOLERANCES PER ASME Y14.5M -1994 UNLESS OTHERWISE SPECIFIED:
CORNER FILLETS R.005-.020 [.127-.508]
TOLERANCES:
ANGLES: ± 1°
1 PLACE .X: ± .015 [0.38]
2 PLACE .XX: ± .01 [0.3]
3 PLACE .XXX: ± .005 [0.13]

THIRD ANGLE PROJECTION	
APPROVALS	DATE
DRAWN TMS	06-03-10
CHECKED BY	
APPROVED	



CATALOG SHEET, 425 DIAPHRAGM VALVE

SCALE	C	DWG NO.	1077615	REV.	AA
		SOLIDWORKS FORMAT			

1070035 (V42F- 0000-00000) 2" NPT
NORMALLY OPEN (STANDARD MODEL)

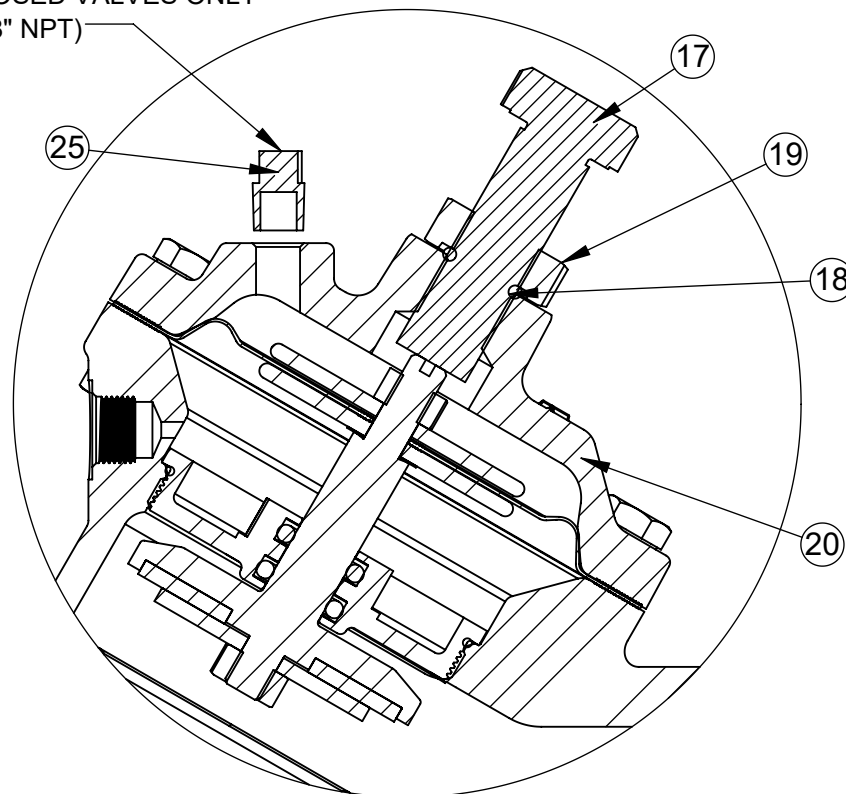
4

3

2

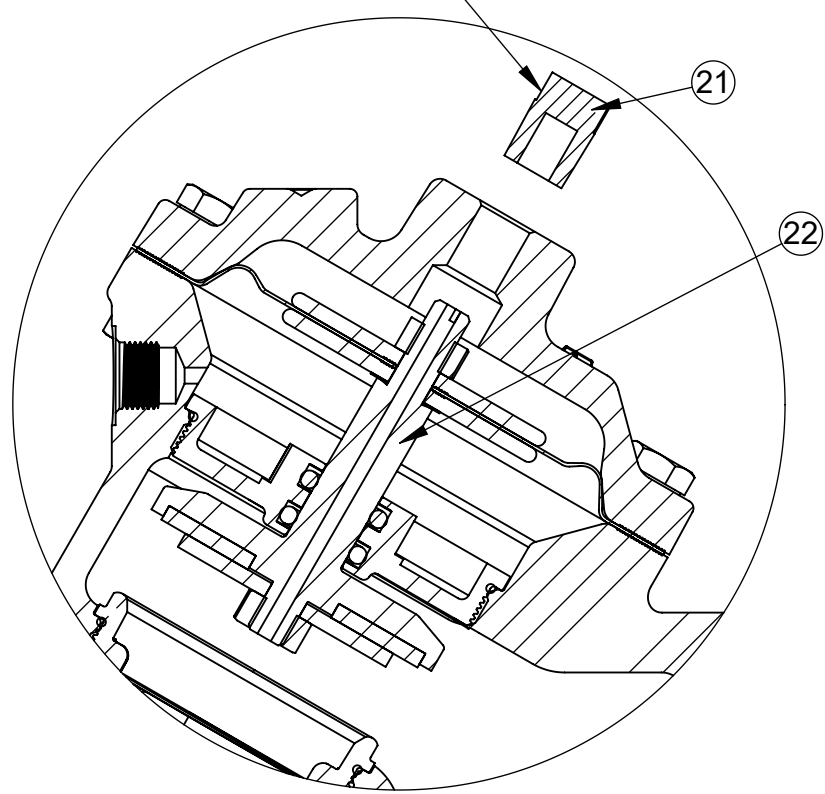
1

USE WITH NORMALLY CLOSED VALVES ONLY (1/8" NPT)



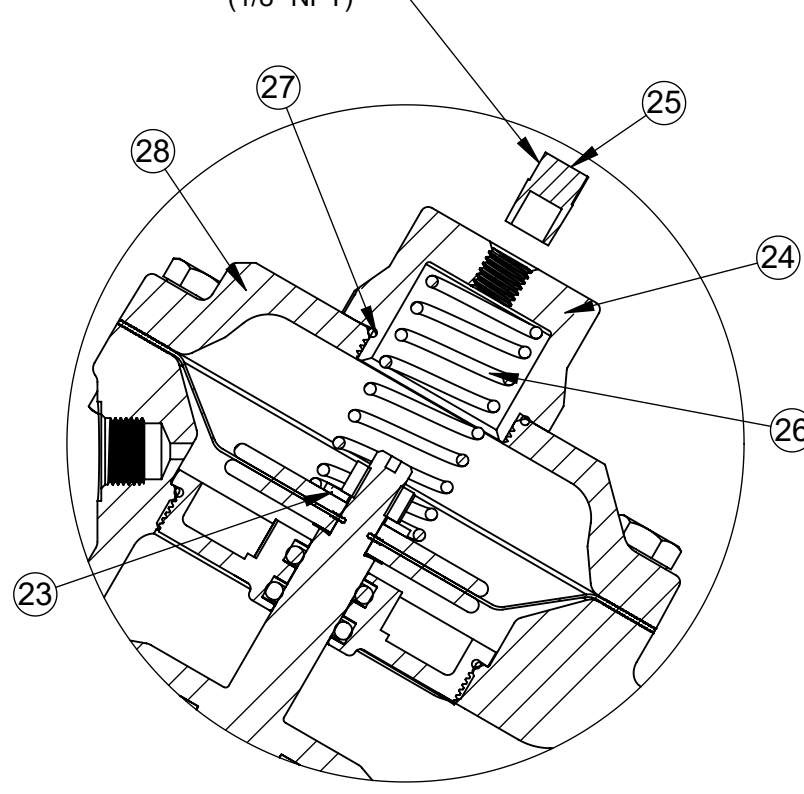
1070037 (V42F-0010-00000) (2" NPT) **LIMIT STOP**

1/4" NPT

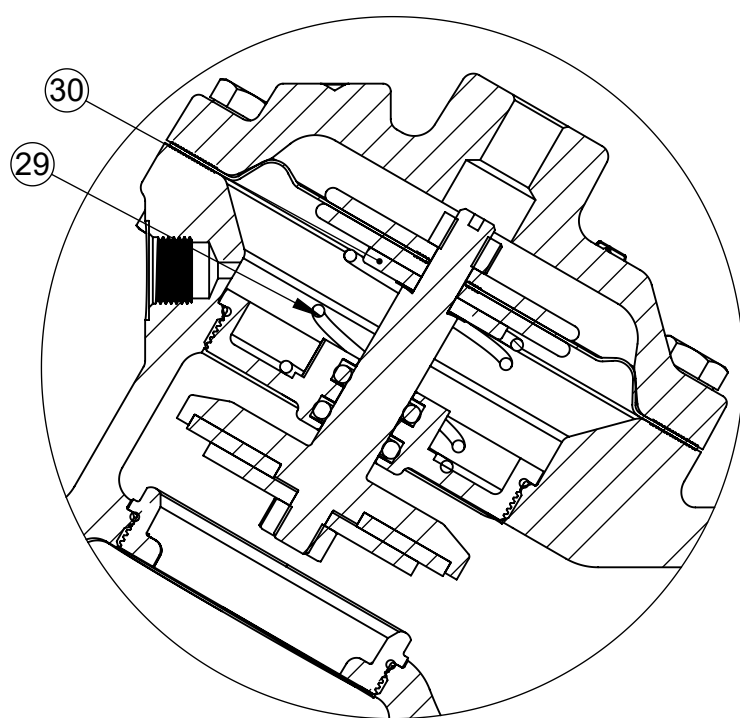


1072894 (V42F-0030-00000) (2" NPT) **NORMALLY CLOSED**

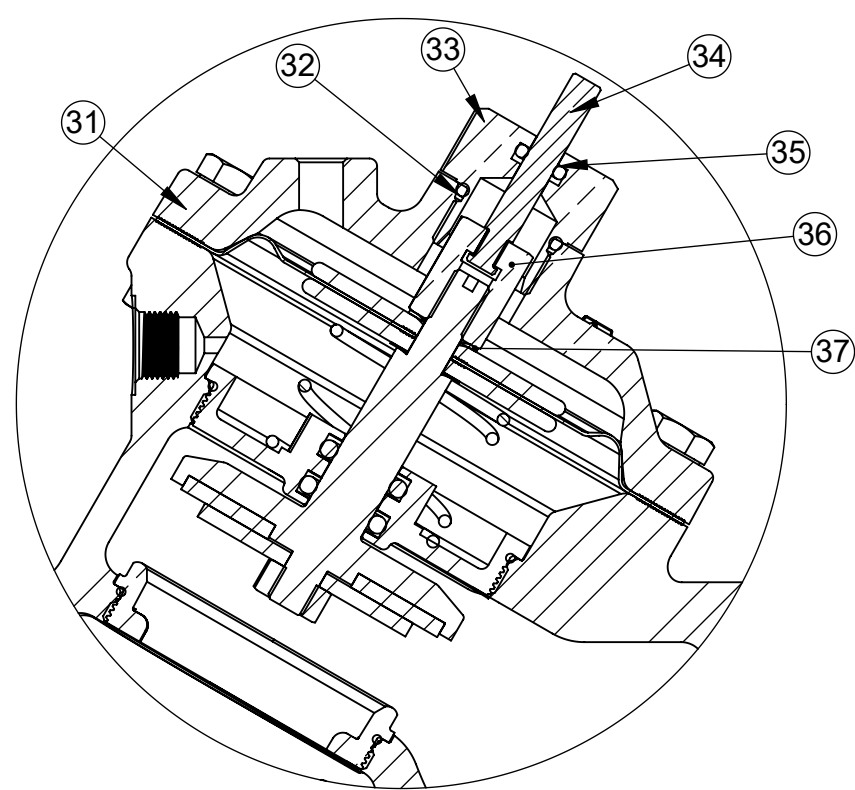
USE WITH NORMALLY CLOSED VALVES ONLY (1/8" NPT)



1072885 (V42F-0002-00000) (2" NPT) **SPRING ASSIST CLOSED**



1070036 (V42F-0001-00000) (2" NPT) **SPRING ASSIST OPEN**



1072893 (V42F-0021-00000) (2" NPT) **POSITION INDICATOR**

REVISIONS				
ECN	REV.	DESCRIPTION	DATE	APPROVED
-	-	SEE SHEET ONE FOR NOTES	-	-

LIMIT STOP MODEL					
ITEM NO.	DESCRIPTION	STD.	PART NUMBER	QTY.	
17	SCREW	SS *	1078676 (SCS-0042)	1	
18	O-RING	BUNA *	1071690 (ORB-112)	1	
19	NUT, LIMIT STOP	SS *	1074434 (426-U)	1	
20	CAP, NPT, LIMIT STOP, CI	CAST IRON *	1074285 (425-CCC)	1	

NORMALLY CLOSED MODEL					
ITEM NO.	DESCRIPTION	STD.	PART NUMBER	QTY.	
21	PIPE PLUG, 1/4 MNPT	PLATED STEEL *	1071918 (PLZ-0008)	1	
		BRASS	1071904 (PLB-0009)		
22	COMBO. SHAFT, NORMALLY CLOSED	CAST IRON *	44017-01 (425-LL)	1	

SPRING ASSIST CLOSED MODEL					
ITEM NO.	DESCRIPTION	STD.	PART NUMBER	QTY.	
23	WASHER	BRASS *	1074083 (421-AH)	1	
24	NUT, SPRING RETAINER	SS *	1074433 (426-TTF)	1	
25	PIPE PLUG (1/8" N.P.T)	PLATED STEEL *	1071917 (PLZ-0005)	1	
		BRASS	1071903 (PLB-0007)		
26	SPRING	SS *	1078688 (426-SS)	1	
27	O-RING, 2-025	BUNA *	1071677 (ORB-025)	1	
28	CAP, SPRING ASSIST CLOSED	CI *	1074284 (425-CA)	1	

SPRING ASSIST OPEN MODEL					
ITEM NO.	DESCRIPTION	STD.	PART NUMBER	QTY.	
29	SPRING, COMPRESSION	SS *	1078692 (426-S)	1	
30	WASHER, CENTERING	BRASS *	1074436 (426-V)	1	

POSITION INDICATOR MODEL					
ITEM NO.	DESCRIPTION	STD.	PART NUMBER	QTY.	
31	CAP, POSITION INDICATOR, CI	CI *	1074288 (425-CF)	1	
32	O-RING	BUNA *	1071692 (ORB-116)	1	
33	SHAFT GUIDE BUSHING	BRASS *	1074121 (421-GF)	1	
34	INDICATOR SHAFT	SS *	1074325 (425-PM)	1	
35	O-RING	BUNA *	1071688 (ORB-108-TC)	1	
36	TOP NUT	BRASS *	1074332 (425-TB)	1	
37	LOCKWASHER, 5/16, INTERNAL	SS *	1073590 (WAS-0007)	1	

REPAIR PARTS KITS	
DESCRIPTION	PART NO.
INT. PARTS KIT (LIMIT STOP) CONSISTS OF STANDARD ITEM NO'S 17, 18, 19	1074319 (425-LS)
INT. PARTS KIT (NORM CLOSED) CONSISTS OF STANDARD ITEM NO'S 5, 13(2), 16, 22	1070131 (425-RG)
INT. PARTS KIT (SPRING ASSIST CLOSED) CONSISTS OF STANDARD ITEM NO'S 23, 26, 27	1074329 (425-SC)
INT PARTS KIT (SPRING ASSIST OPEN) CONSISTS OF STANDARD ITEM NO'S 3, 29, 30	1074331 (425-SO)
INT PARTS KIT (POSITION INDICATOR) CONSISTS OF STD ITEM NO'S 32 THRU 37	1074323 (425-PI)

TORQUE TABLE		
ITEM#	DESCRIPTION	TORQUE TO (±10%)
19	NUT, LIMIT STOP	120 IN/LBS
24	NUT, SPRING RETAINER	120 IN/LBS
33	SHAFT GUIDE BUSHING	120 IN/LBS
36	TOP NUT	120 IN/LBS

- NOTE:
1. SPRING ASSIST CLOSED MODEL CANNOT BE COMBINED WITH LIMIT STOP MODEL.
 2. VALVES AVAILABLE WITH B.S.P.T. END CONNECTIONS.

SEE REVERSE SIDE FOR STANDARD NORMALLY OPEN MODEL.

CONVERSION KITS	
DESCRIPTION	PART NO.
CONVERSION KIT (LIMIT STOP) CONSISTS OF STANDARD ITEM NO'S 17, 18, 19, 20	1074320 (425-LSC)
CONVERSION KIT (SPRING ASSIST CLOSED) CONSISTS OF STANDARD ITEM NO'S 23 THRU 28	1074330 (425-SCC)
CONVERSION KIT (SPRING ASSIST OPEN) CONSISTS OF STADARD ITEM NO'S 3, 29, 30	1074331 (425-SO)
CONVERSION KIT (POSITION INDICATOR) CONSISTS OF STANDARD ITEM NO'S 31 THRU 37	1074324 (425-PIC)

THIS DOCUMENT IS SOLELY THE PROPERTY OF AQ-MATIC REPRODUCTION, USE DISCLOSURE, OR TRANSMISSION OF THIS DOCUMENT OR DETAILS CONTAINED HEREIN, IN PART OR IN WHOLE, IS PROHIBITED WITHOUT THE WRITTEN CONSENT OF AQ-MATIC ENGINEERING. THIS DOCUMENT AND ANY COPIES SHALL BE RETURNED TO AQ-MATIC UPON WRITTEN REQUEST.

DO NOT SCALE DRAWING. DIMS. ARE IN INCHES [mm] INTERPRET DIMS AND TOLERANCES PER ASME Y14.5M -1994 UNLESS OTHERWISE SPECIFIED:
CORNER FILLETS R.005-.020 [0.127-.508]
TOLERANCES:
ANGLES: ±1°
1 PLACE .X: ±.015 [0.38]
2 PLACE .XX: ±.01 [0.3]
3 PLACE .XXX: ±.005 [0.13]

THE COMPONENT, PART, OR ASSEMBLY DESCRIBED IN THIS DOCUMENT MUST COMPLY WITH THE EU (EUROPEAN UNION) DIRECTIVE: RoHS DIRECTIVE 2011/65/EC.

THIRD ANGLE PROJECTION		
APPROVALS	DATE	CATALOG SHEET, 425 DIAPHRAGM VALVE
DRAWN TMS	06-03-10	
CHECKED BY		
APPROVED		
SCALE	SOLIDWORKS FORMAT	DWG NO. 1077615 REV. AA
		SHEET 2 OF 2