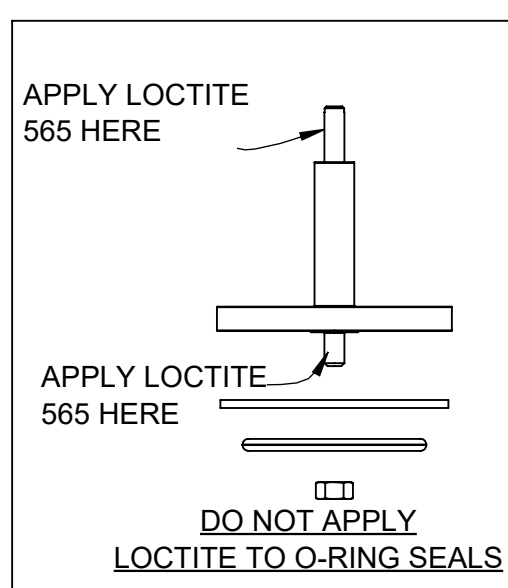
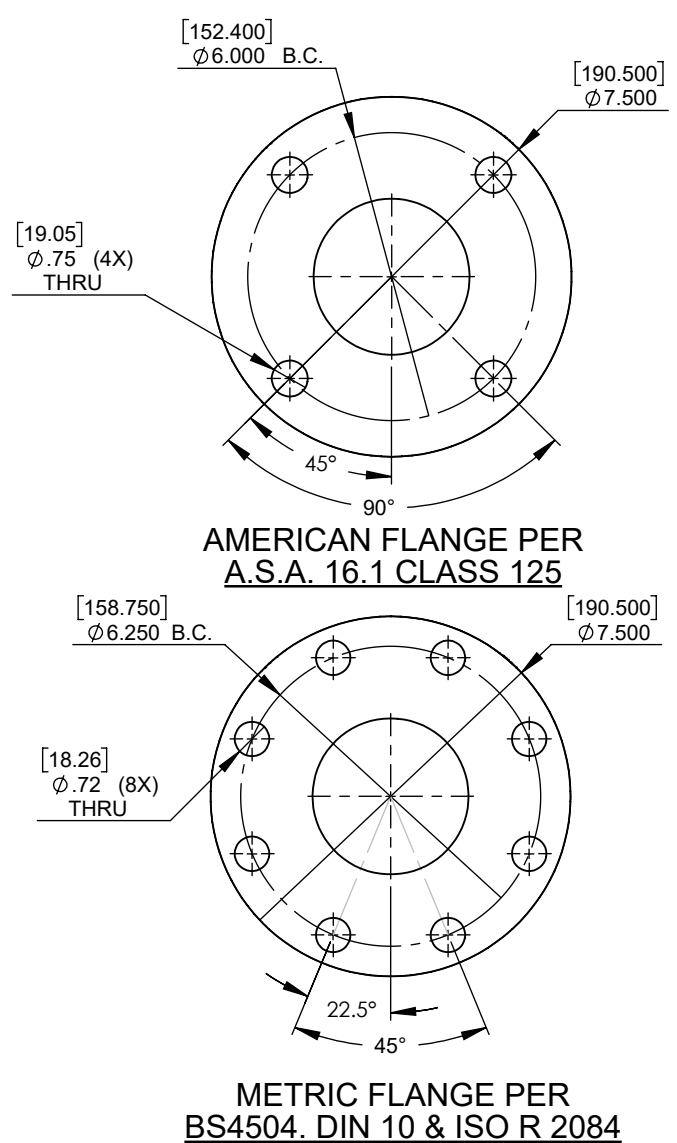
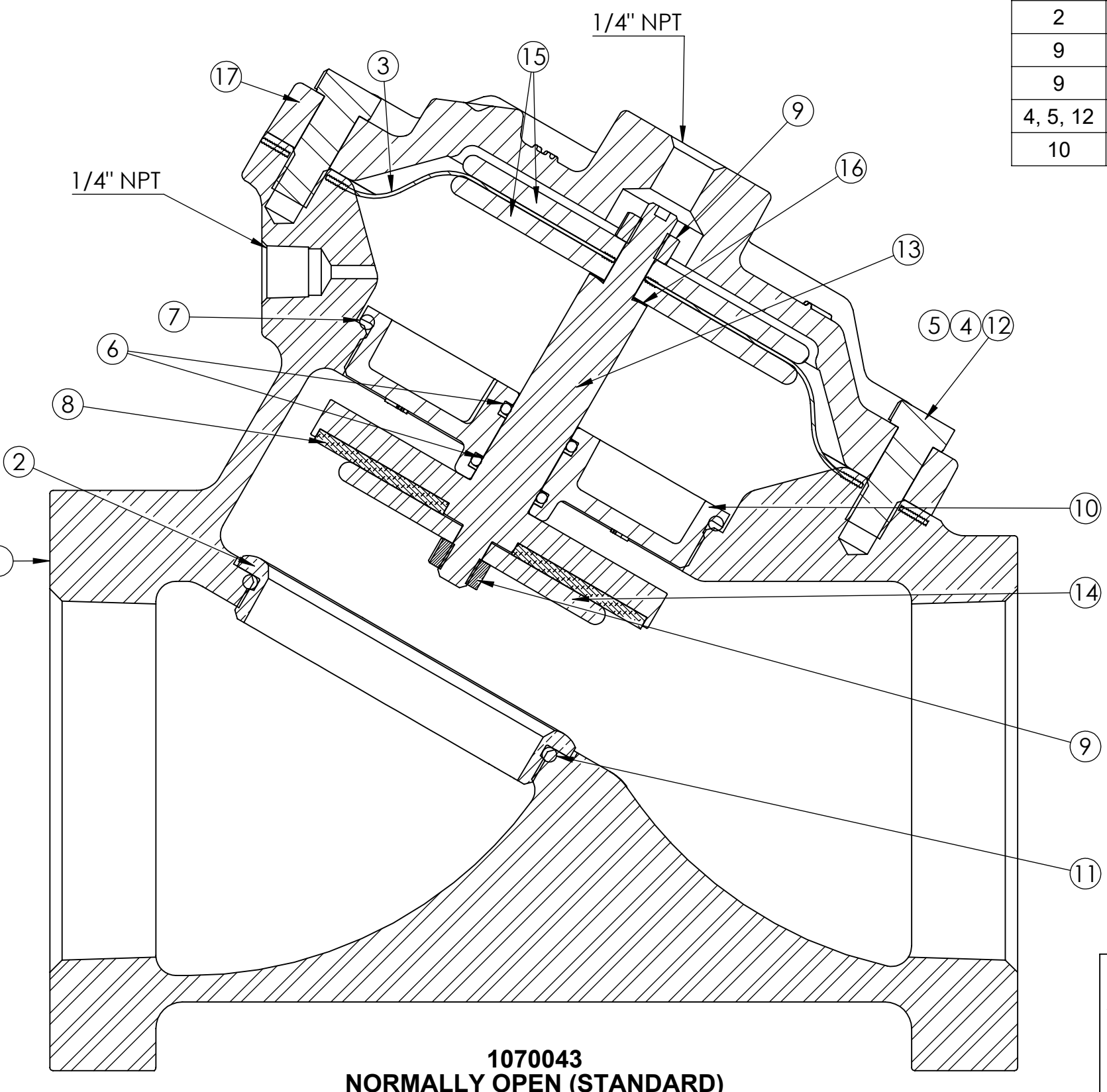


REVISIONS				
ECN	REV.	DESCRIPTION	DATE	APP'D
1595	T	CATALOG SHEET UPDATE, PARTS CHANGES	1/14/21	
2072	U	CATALOG SHEET UPDATE, PARTS CHANGES	5/18/22	
2125	V	CATALOG SHEET UPDATE, PARTS CHANGES	8/16/22	

TORQUE TABLE		
ITEM#	DESCRIPTION	TORQUED TO (+/-10%)
2	SEAT	500 IN/LBS (41.6 FT/LBS)
9	UPPER NUT	140 IN/LBS
9	LOWER NUT	140 IN/LBS
4, 5, 12	NUT, HEX SCREW	140 IN/LBS
10	SHAFT GUIDE	500 IN/LBS (41.6 FT/LBS)

ITEM NO.	DESCRIPTION	STD	PART NUMBER	QTY
1	BODY, 427, 3.00" NPT THREAD	CAST IRON	* 1074446 (427-AS)	1
	BODY, 427, 3.00" BSPT THREAD	CAST IRON	1074437	
	BODY, 427, FLGD, ISO	CAST IRON	1074439	
	BODY, 427, FLGD ASTM	CAST IRON	1074438	
	BODY, 427, 3.00" NPT THREAD	BRASS	1074449 (427-ASB)	
	BODY, 427, 3.00" BSPT THREAD	BRASS	1074450	
2	BODY, 427, 3.00" GROOVED CLAMP	CAST IRON	4510487	1
	SEAT, 427, MACHINED	BRASS	* 1074505 (427-MO)	
3	DIAPHRAGM SERIES 427	BUNA	* 1074475 (427-FB)	1
		FKM	1074477 (427-FV)	
4	SCREW, 3/8" X 16 X 1 1/2", HX HD	PLTD STL	* 1072405 (SC2-0025)	6
		SS	1072390	
5	HEX NUT, 3/8" - 16	PLTD STL	* 1071658 (NUZ-0014)	6
		SS	1071652	
6	O-RING 2-114	BUNA	* 1071691 (ORB-114TC)	2
		E.P.D.M.	1071729 (ORE-114TC)	
		FKM	1242391 (ORV-114)	
7	O-RING 2-237	BUNA	* 1071708 (ORB-237)	1
		E.P.D.M.	1071755 (ORE-237)	
		FKM	1071828 (ORV-237)	
8	DISK, 427	BUNA	* 1074487 (427-J)	1
		E.P.D.M.	1074489 (427-JE)	
		FKM	1074492	
		HYCAR	1074490 (427-HO)	
9	NUT, HEX. 5/16" - 24	SS	* 1263853 (RMET)	2
10	SHAFT GUIDE, MACHINED	SS	* 43850	1
11	O-RING, 2-233	E.P.D.M.	* 1071754 (ORE-233)	1
		BUNA	1071706 (ORB-233)	
		FKM	1071826 (ORV-233)	
12	SCREW, HEX HD, 3/8"-16X1	SS	* 19768	2
13	SHAFT NORMALLY OPEN	SS	* 4510301-01	1
14	DISC PLATE	SS	* 1074371 (426-DA)	1
15	DIAPHRAGM PLATE	SS	* 1074472 (427-DA)	2
16	COPPER WASHER	COPPER	* 1074252 (424-R)	1
		CAST IRON	* 1074454 (427-C)	1
17	CAP, 427, MACHINED	BRASS	1074457 (427-CB)	



ASSEMBLY TOOLS	
DESCRIPTION	PART NO.
FOR INSTALLATION & REMOVAL OF SHAFT GUIDE (ITEM #10)	1-1/8" HEX SOCKET

NOTE:  
 1. AMERICAN NATIONAL STANDARD TAPER PIPE THREADS (NPT) PER ANSI B2.1-1968  
 2. VALVES AVAILABLE WITH B.S.P. END CONNECTIONS

REPAIR PARTS KITS			
DESCRIPTION	PART NO.		
DIAPHRAGM & SEALS KIT CONSISTS OF ITEM NO'S 3, 6(2), 7, 8, 9(2), 11, 16,	1070072 (427-RA)	1070085 (427-RAE)	1070097 (427-RAV)
	BUNA N INCLUDES DIAPHRAGM 1074475 (427-FB)	E.P.D.M. INCLUDES DIAPHRAGM 1074475 (427-FB)	FKM INCLUDES DIAPHRAGM 1074477 (427-FV)
	1070122 (427-RF)		
INT. PARTS KIT (NORM. OPEN) CONSISTS OF STANDARD ITEM NO'S 10, 13, 14, 15(2)	1070122 (427-RF)		
SEAT (ITEM NO. 2)	1074505 (427-MO)		

THIS DOCUMENT IS SOLELY THE PROPERTY OF AQ-MATIC REPRODUCTION, USE DISCLOSURE, OR TRANSMISSION OF THIS DOCUMENT OR DETAILS CONTAINED HEREIN, IN PART OR IN WHOLE, IS PROHIBITED WITHOUT THE WRITTEN CONSENT OF AQ-MATIC ENGINEERING. THIS DOCUMENT AND ANY COPIES SHALL BE RETURNED TO AQ-MATIC UPON WRITTEN REQUEST.

INTERPRET DIMENSIONS AND TOLERANCES PER ASME Y14.5M -1994

UNLESS OTHERWISE SPECIFIED: DIMENSIONS ARE IN INCHES (mm)  
 CORNER FILLETS R.005-.020 [127-508]  
 TOLERANCES:  
 ANGLES: ± 1°  
 1 PLACE .X: ± .100 [2.54]  
 2 PLACE .XX: ± .010 [0.25]  
 3 PLACE .XXX: ± .005 [0.13]

THE COMPONENT OR PRODUCT DESCRIBED IN THIS DOCUMENT MUST COMPLY WITH RoHS 3 EU (EUROPEAN UNION) DIRECTIVE 2015/863

THIRD ANGLE PROJECTION

APPROVALS: [Signature] DATE: 5/4/20

DRAWN: TRK

CHECKED BY:

APPROVED:

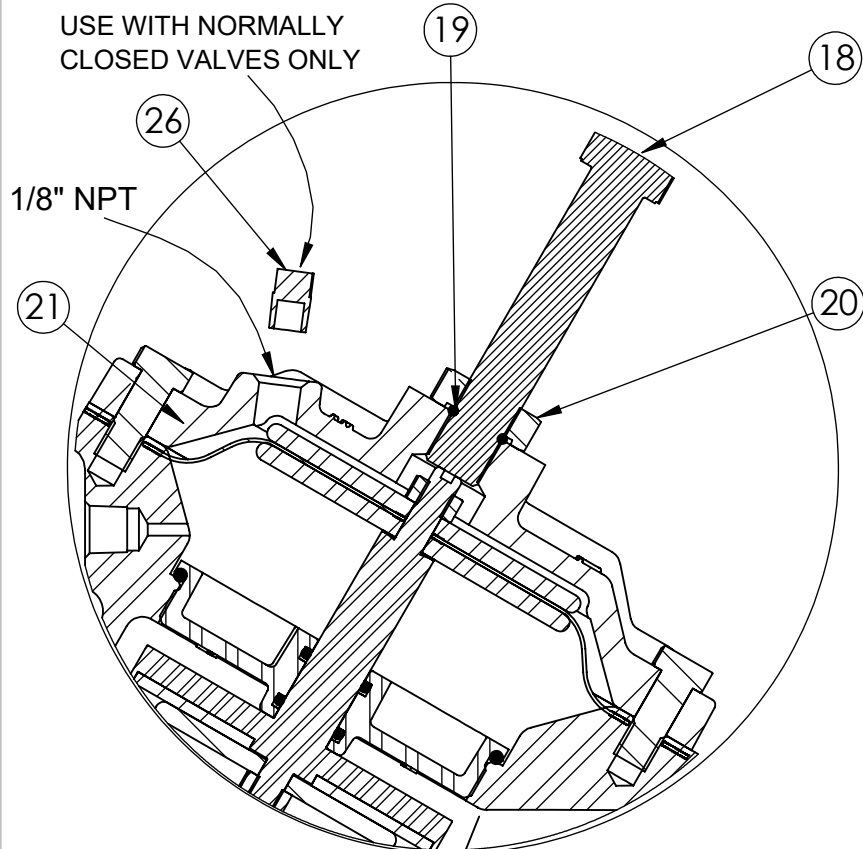
DESCRIPTION: CATALOG SHEET, 427 DIAPHRAGM VALVE STANDARD MODEL

SIZE: C DWG NO.: 1077617 REV.: V

SCALE: 1:5 SOLIDWORKS FORMAT SHEET 1 OF 2



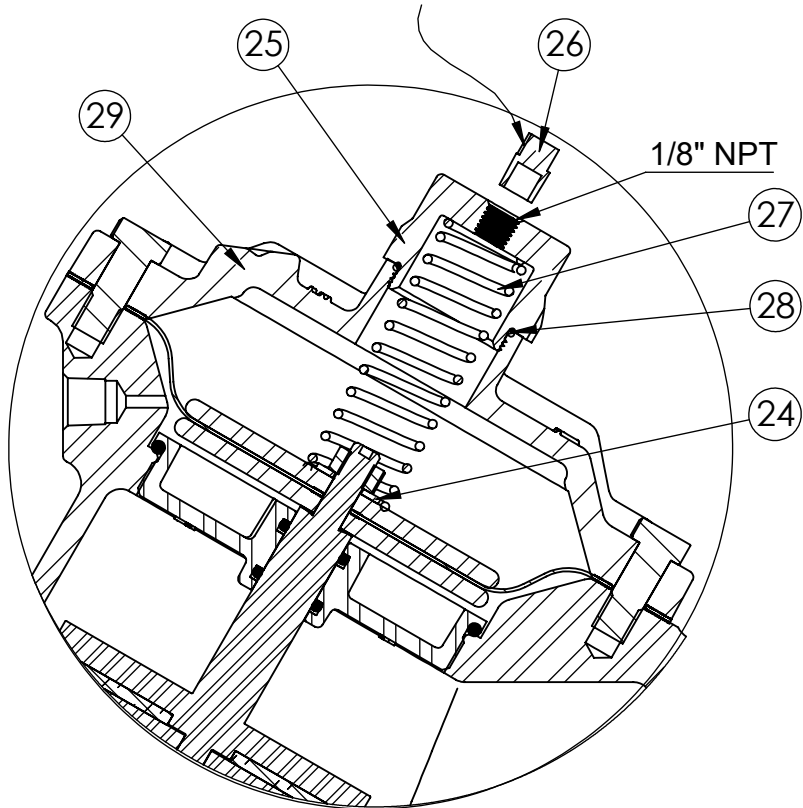
USE WITH NORMALLY CLOSED VALVES ONLY



1073052 (V42J-0010-00000) (THREADED)  
1073103 (V42J-3010-00000) (FLANGED)

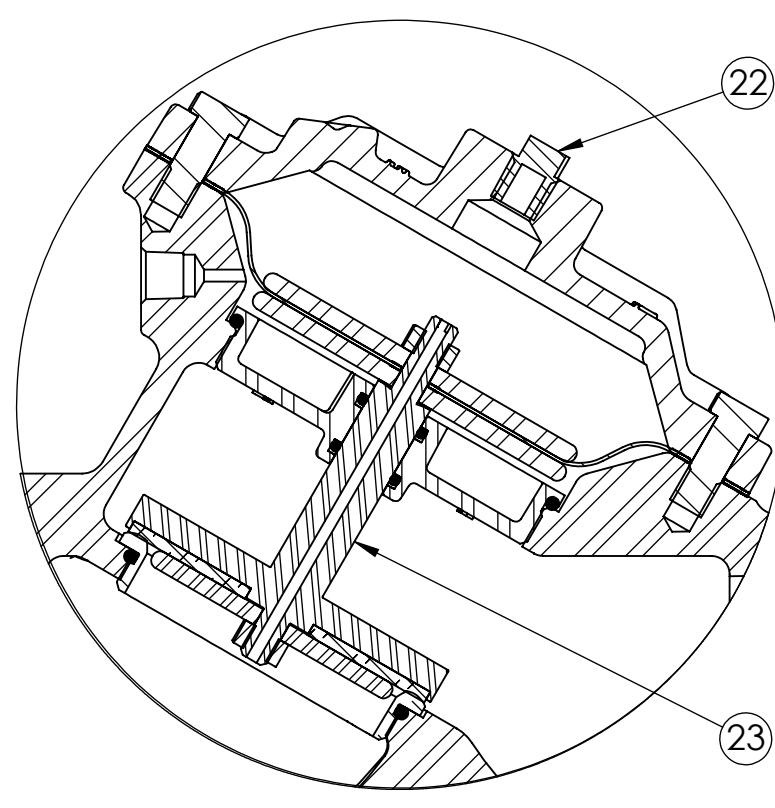
**LIMIT STOP**

USE WITH NORMALLY CLOSED VALVES ONLY



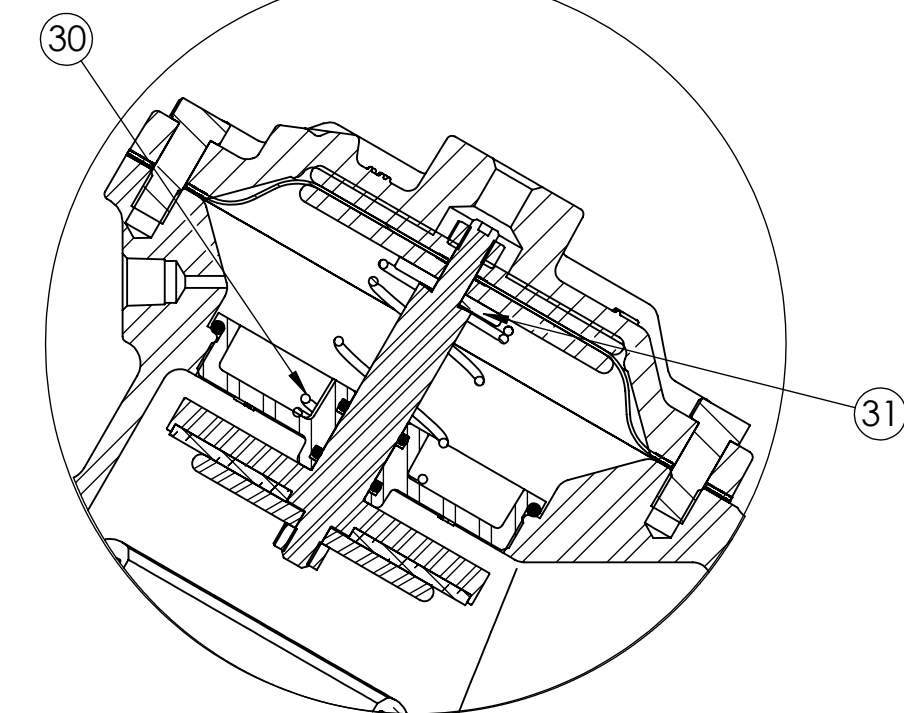
1073047 (V42J-0002-00000) (THREADED)  
1073100 (V42J-3002-00000) (FLANGED)

**SPRING ASSIST CLOSED**



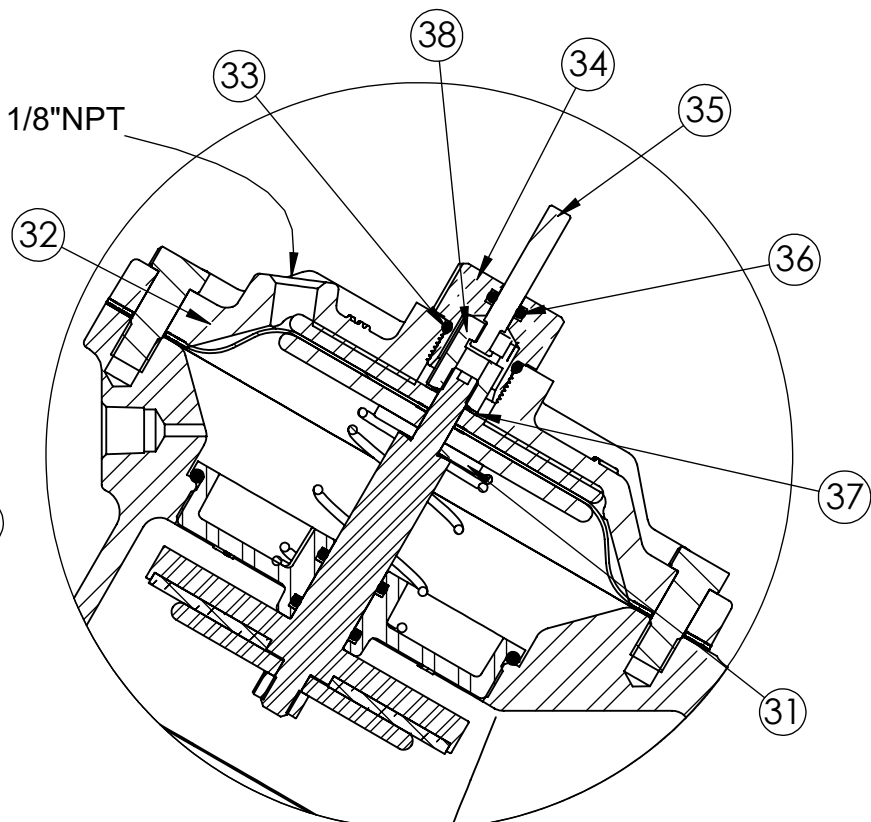
1073055 (V42J-0030-00000) (THREADED)  
1073113 (V42J-3030-00000) (FLANGED)

**NORMALLY CLOSED**



1073045 (V42J-0001-00000) (THREADED)  
1073097 (V42J-3001-00000) (FLANGED)

**SPRING ASSIST OPEN**



1073054 (V42J-0021-00000) (THREADED)  
1077374 (V42J-3021-00000) (FLANGED)

**POSITION INDICATOR**

NOTE:  
1. SPRING ASSIST CLOSED MODEL CANNOT BE COMBINED WITH LIMIT STOP OR POSITION INDICATOR MODELS.  
2. VALVES AVAILABLE WITH B.S.P. END CONNECTIONS.

**REVISIONS**

ECN	REV.	DESCRIPTION	DATE	APP'D
		SEE PAGE 1 FOR DOCUMENT CHANGES		

**TORQUE TABLE**

ITEM#	DESCRIPTION	TORQUE TO (+/-10%)
20	NUT, LIMIT STOP	120 IN/LBS
25	NUT, RETAINER	140 IN/LBS
34	PI, ROD GUIDE	140 IN/LBS
38	TOP NUT	120 IN/LBS

ITEM NO.	DESCRIPTION	STD	PART NUMBER	QTY.
<b>LIMIT STOP MODEL</b>				
18	SCREW, 5/8-18X3.50 HEX HD,	*	1072365 (SCS-0043)	1
19	O-RING, 2-112, NITRILE	*	1071690 (ORB-112)	1
20	NUT, LIMIT STOP	*	1074434 (426-U)	1
21	CAP, 427, LS, BRASS		1074465 (427-CCCB)	1
	CAP, 427, LS, CAST IRON	*	1074462 (427-CCC)	
<b>NORMALLY CLOSED MODEL</b>				
22	MALE PIPE PLUG 1/4 NPT, PLATED	*	1071918 (PLZ-0008)	1
	MALE PIPE PLUG 1/4 NPT, BRASS		1071904 (PLB-0009)	
23	COMBINATION SHAFT, 427, N.C.	*	4510301-02	1
<b>SPRING ASSIST CLOSED MODEL</b>				
24	WASHER,	*	1074083 (421-AH)	1
25	NUT, SPRG RTNR, 425 & 465, SS	*	1074433 (426-TTS)	1
26	MALE PIPE PLUG 1/8 NPT, PLATED	*	1071917	1
	MALE PIPE PLUG 1/8 NPT, BRASS		1071903	
27	SPRING, COMPRESSION, 316SS	*	1078688 (426-SS)	1
28	O-RING, 2-025, NITRILE	*	1071677 (ORB-025)	1
29	CAP, 427, SPRING ASSIST, CI	*	1074460 (427-CC)	1
	CAP, 427, SPRING ASSIST, CB		1074461 (421-CCB)	
<b>SPRING ASSIST OPEN MODEL</b>				
30	SPRING, COMPRESSION	*	1078692 (426-S)	1
31	CENTERING WASHER, BRASS	*	1074436	1
<b>POSITION INDICATOR MODEL</b>				
32	CAP, 427, CI, NPT, PI	*	1074468 (427-CF)	1
	CAP, 427, NPT, PI, CB		1074469 (427-CFB)	
33	O-RING, 2-116, NITRILE	*	1071692 (ORB-116)	1
34	PI ROD GDE, V42, BRASS	*	1074121 (421-GF)	1
35	SHAFT, 427, SS, MACH	*	1074510 (427-GF)	1
36	O-RING, 2-106, NITRILE, TFLN CTD	*	1071688 (ORB-108TC)	1
37	LOCKWASHER, 5/16", INTRNL TOOTH	*	1073590 (WAS-0007)	1
38	TOP NUT, BRASS	*	1074332 (425-TB)	1

CONVERSION KITS	
DESCRIPTION	PART NO.
CONVERSION KIT (LIMIT STOP) CONSISTS OF STANDARD ITEM NO'S 18, 19, 20, 21	1074502 (427-LSC)
CONVERSION KIT (SPRING ASSIST CLOSED) CONSISTS OF STANDARD ITEM NO'S 24 THRU 29	1074519 (427-SCC)
CONVERSION KIT (SPRING ASSIST OPEN) CONSISTS OF STANDARD ITEM NO'S 16, 30, 31	1074521 (427-SO)
CONVERSION KIT (POSITION INDICATOR) CONSISTS OF STANDARD ITEM NO'S 32 THRU 38	1074509 (427-PIC)

REPAIR PARTS KITS	
DESCRIPTION	PART NO.
INT. PARTS KIT (LIMIT STOP) CONSIST OF STANDARD ITEM NO'S 18, 19, 20	1074501 (427-LS)
INT. PARTS KIT (NORM. CLOSED) CONSIST OF STANDARD ITEM NO'S, 10, 14, 15(2), 23	1070133 (427-RG)
INT. PARTS KIT (SPRING ASSIST CLOSED) CONSIST OF STANDARD ITEM NO'S 24, 27, 28	1081565 (427-SC)
INT. PARTS KIT (SPRING ASSIST OPEN) CONSIST OF STANDARD ITEM NO'S 16, 30, 31	1074521 (427-SO)
INT. PARTS KIT (POSITION INDICATOR) CONSIST OF STANDARD ITEM NO'S 33 THRU 38	1074508 (427-PI)

THIS DOCUMENT IS SOLELY THE PROPERTY OF AQ-MATIC REPRODUCTION, USE DISCLOSURE, OR TRANSMISSION OF THIS DOCUMENT OR DETAILS CONTAINED HEREIN, IN PART OR IN WHOLE, IS PROHIBITED WITHOUT THE WRITTEN CONSENT OF AQ-MATIC ENGINEERING. THIS DOCUMENT AND ANY COPIES SHALL BE RETURNED TO AQ-MATIC UPON WRITTEN REQUEST.

INTERPRET DIMENSIONS AND TOLERANCES PER ASME Y14.5M -1994

UNLESS OTHERWISE SPECIFIED: DIMENSIONS ARE IN INCHES (mm) CORNER FILLETS R.005-.020 [127-508] TOLERANCES: ANGLES: ±1° 1 PLACE .X: ±.100 [2.54] 2 PLACE .XX: ±.010 [0.25] 3 PLACE .XXX: ±.005 [0.13]

THE COMPONENT OR PRODUCT DESCRIBED IN THIS DOCUMENT MUST COMPLY WITH RoHS 3 EU (EUROPEAN UNION) DIRECTIVE 2015/863



APPROVALS	DATE
DRAWN	5/4/20
CHECKED BY	
APPROVED	

**AQ-Matic** AQ-MATIC VALVES AND CONTROLS

DESCRIPTION: CATALOG SHEET, 427 DIAPHRAGM VALVE STANDARD MODELS

SIZE: C DWG NO.: 1077617 REV.: V

SCALE: 1:5 SOLIDWORKS FORMAT SHEET 2 OF 2