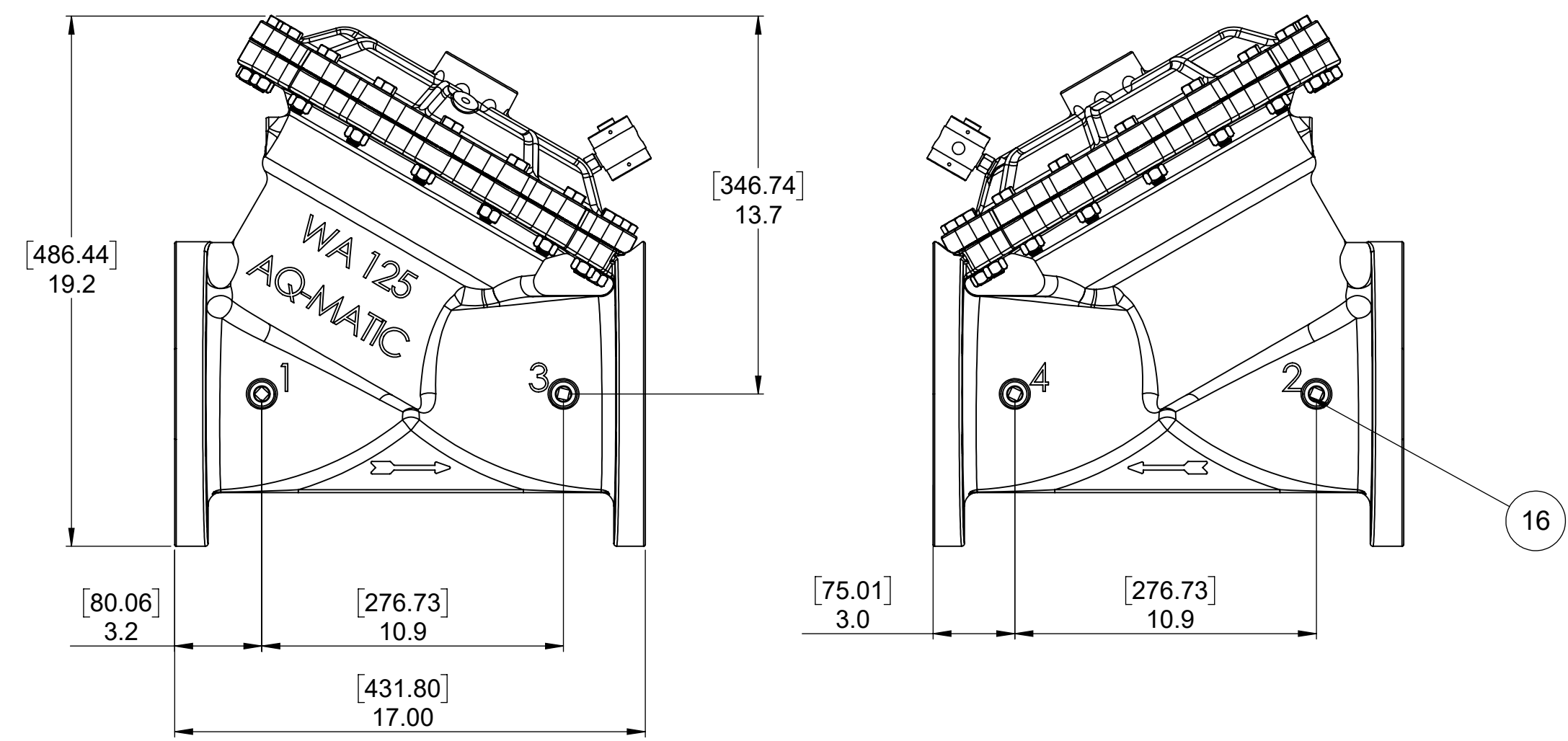


8 7 6 5 4 3 2 1

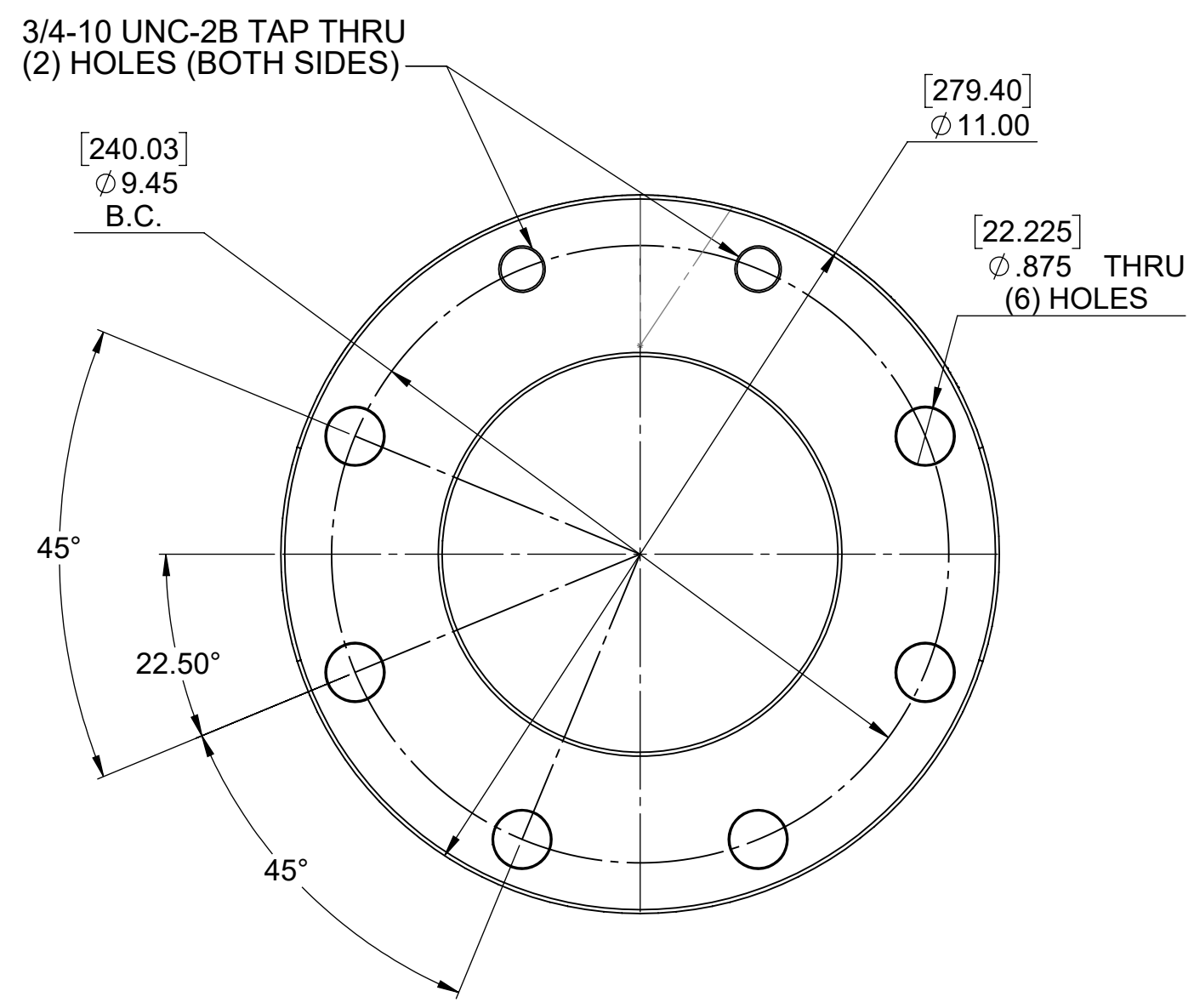
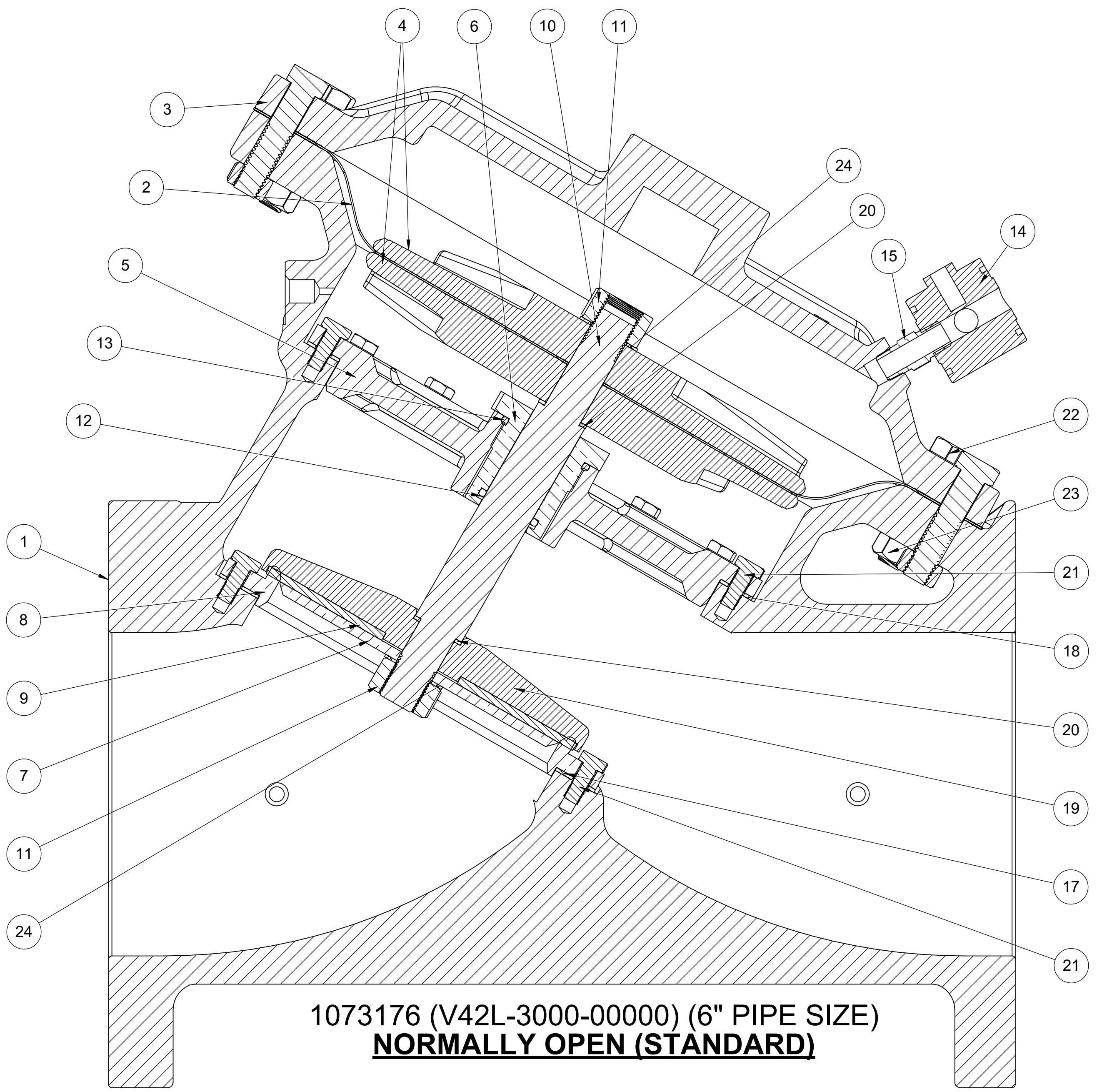


REPAIR PARTS KITS		
DESCRIPTION	PART NO.	
DIAPHRAGM & SEALS KIT CONSISTS OF ITEM NO'S 2, 9, 11(2), 12, 13, 17, 18, 20(2), 24(2)	1070074 (429-RA)	1070099 (429-RAV)
	BUNA N INCLUDES DIAPHRAGM 1074622 (429-FB)	FKM INCLUDES DIAPHRAGM 1074623 (429-FV)
INT. PARTS KIT (NORM. OPEN) CONSISTS OF STANDARD ITEM NO'S 4(2), 5, 6, 7, 10, 19, 21(12)	1074653 (429-RF)	
SEAT - ITEM NO. 8	1074640 (429-MO)	

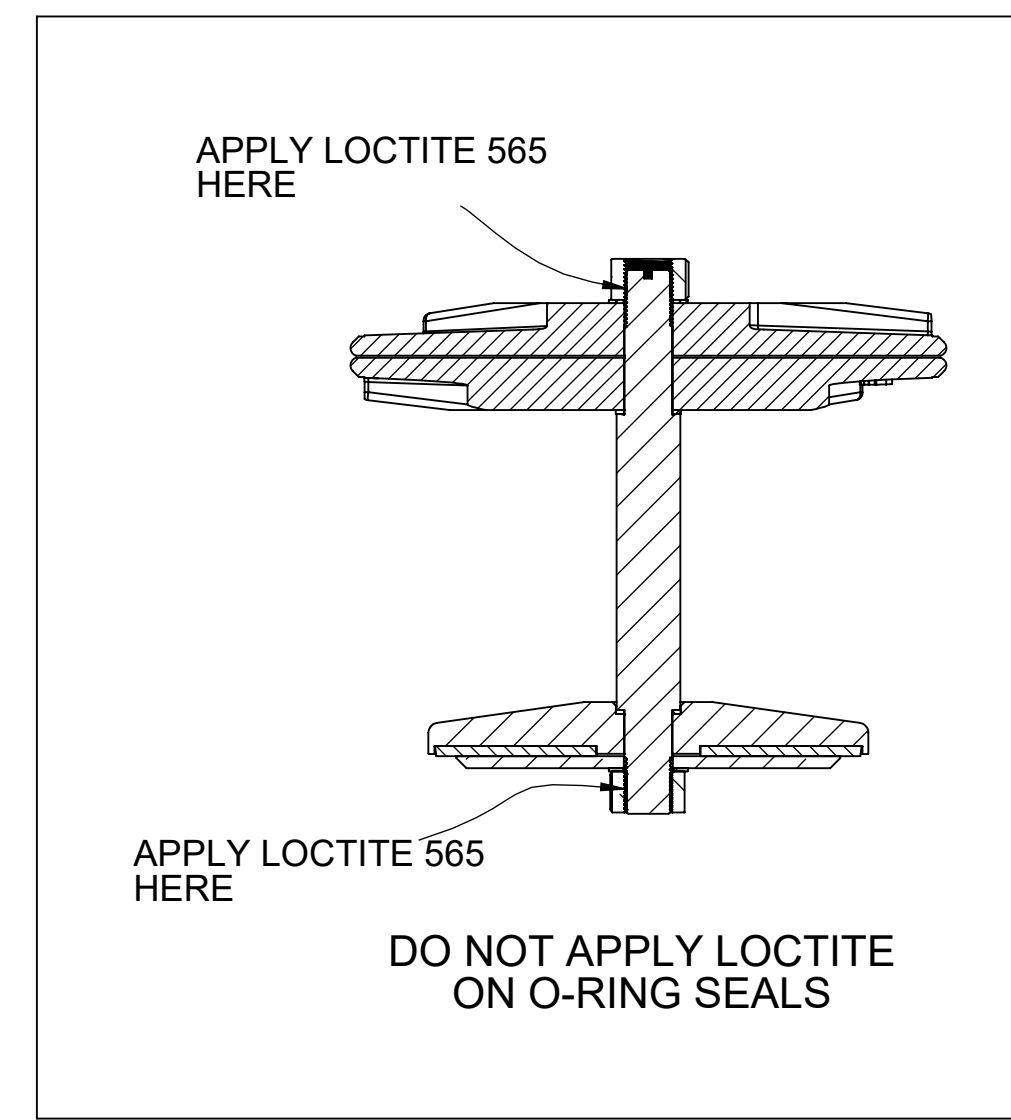
NOTE:
1. AMERICAN NATIONAL STANDARD TAPER PIPE THREADS (NPT) PER ANSI B2.1 - 1968

REVISIONS				
ECN	REV.	DESCRIPTION	DATE	APP'D
1832	R	CATALOG SHEET UPDATE, ON AQ TEMPLATE	1/22/21	
1943	S	CATALOG SHEET UPDATE, CORRECTIONS TO KITS	9/15/21	

NORMALLY OPEN (STANDARD CONFIGURATION)				
ITEM NO.	DESCRIPTION	STD	PART NUMBER	QTY.
1	VALVE BODY	CAST IRON	* 1074613 (429-A)	1
2	DIAPHRAGM	BUNA-N	* 1074622 (429-FB)	1
		FKM	1074623 (429-FV)	
3	CAP, 429	CAST IRON	* 1074615 (429-C)	1
4	PLATE, DIAPHRAGM	BRASS	* 1074620 (429-D)	2
5	SHAFT GUIDE	CAST IRON	* 1074625 (429-G0)	1
6	GUIDE, SHAFT	BRASS	* 1074646 (429-P)	1
7	PLATE, DISC	BRASS	* 1074634 (429-K)	1
8	LOWER, SEAT	BRASS	* 1074640 (429-MO)	1
		HYCAR	* 1074632 (429-JH)	
9	DISC	FKM	1074633 (429-JV)	1
		FKM	1074633 (429-JV)	
10	SHAFT NO	STAINLESS STEEL	* 1074636 (429-L)	1
11	NUT, 3/4-16	STAINLESS STEEL	* 3001991	2
12	O-RING, 2-214, FKM	FKM	* 1242721	1
13	O-RING, 2-223	NITRILE	* 1071703 (ORB-223)	1
		FKM	1071820 (ORV-223)	
14	HUMPHREY VALVE N.C.	BRASS	* 1074661 (429-VP)	1
15	FITTING, NIPPLE 1/4MNPTX1.38	BRASS	* 1081648	1
16	MALE PIPE PLUG, 1/4 NPT	PLATED STEEL	* 1071918 (PLZ-0008)	4
17	GASKET, 429, SEAT	BUNA-N	* 1074642 (429-N)	1
18	GASKET, CENTERING PLATE,	BUNA-N	* 1074644 (429-O)	1
19	RETAINER DISC, SS	STAINLESS STEEL	* 4510460 (429-HS)	1
20	GASKET, WASHER	COPPER	* 1073952	2
21	SCREW, HEX HD, CAP, 5/16-18 SS	PLATED STEEL	* 1072355 (SCS-0011)	20
22	SCREW 1/2-13, HEX HD, CAP	PLATED STEEL	* 1072410 (SCZ-0038)	16
23	NUT, 1/2-13	PLATED STEEL	* 16568-02	16
24	LOCK WASHER	STAINLESS STEEL	* 1073592 (WAS-0011)	2



AMERICAN FLANGE PER A.S.A 16.1 CLASS 125



1073176 (V42L-3000-00000) (6" PIPE SIZE)
NORMALLY OPEN (STANDARD)

SEE REVERSE SIDE FOR CONFIGURATION OPTIONS

THIS DOCUMENT IS SOLELY THE PROPERTY OF AQ-MATIC. REPRODUCTION, USE, DISCLOSURE, OR TRANSMISSION OF THIS DOCUMENT OR DETAILS CONTAINED HEREIN, IN PART OR IN WHOLE, IS PROHIBITED WITHOUT THE WRITTEN CONSENT OF AQ-MATIC ENGINEERING. THIS DOCUMENT AND ANY COPIES SHALL BE RETURNED TO AQ-MATIC UPON WRITTEN REQUEST.

DO NOT SCALE DRAWING. DIMS. ARE IN INCHES (mm) INTERPRET DIMS AND TOLERANCES PER ASME Y14.5M - 1994 UNLESS OTHERWISE SPECIFIED. CORNER FILLETS R.005-.020 (127-508)

TOLERANCES:
ANGLES: ± 1°
1 PLACE .XX ± 0.15 (0.38)
2 PLACE .XX ± 0.1 (0.3)
3 PLACE .XXX ± 0.05 (0.13)

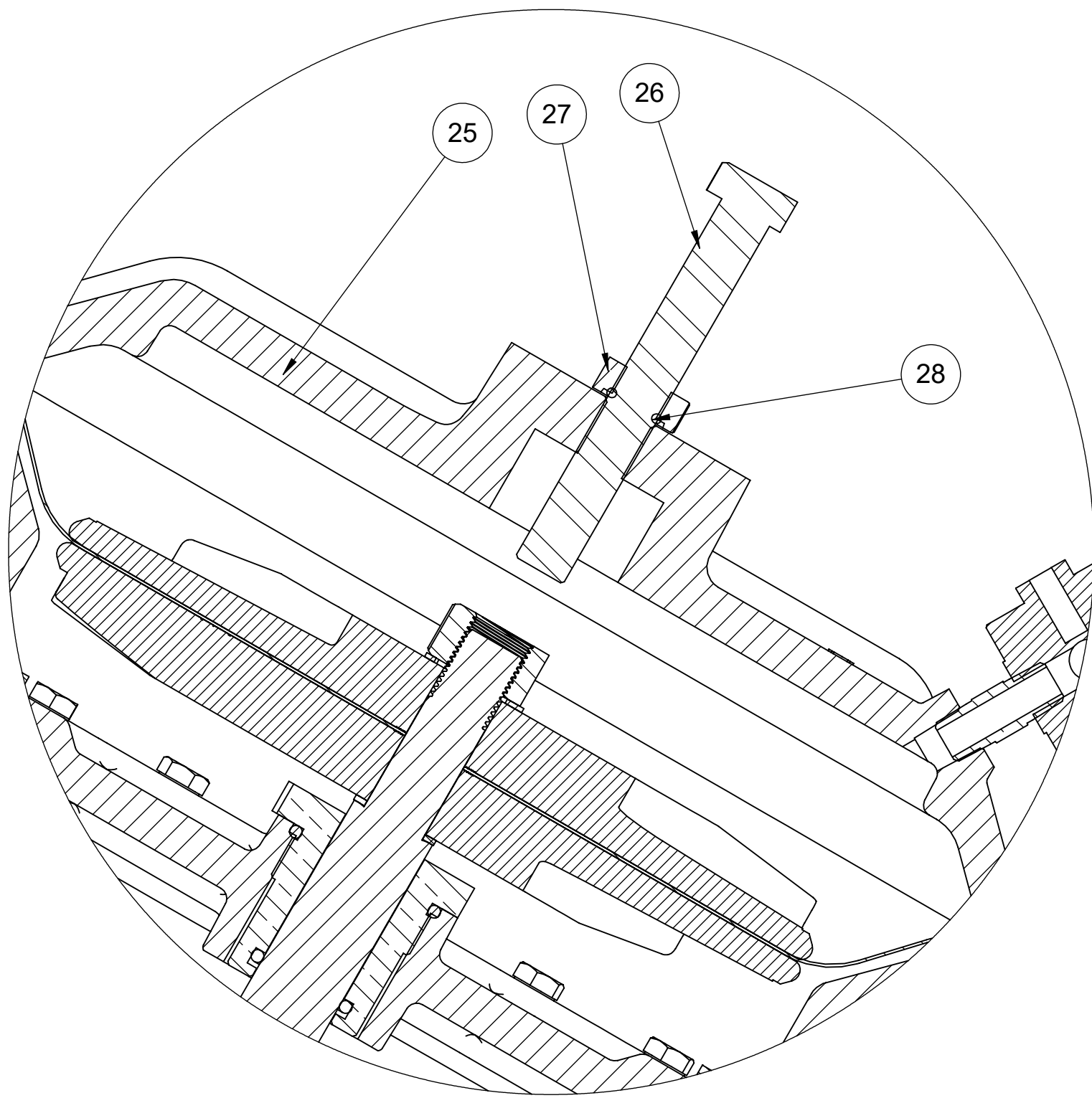
THIRD ANGLE PROJECTION	APPROVALS	DATE	
DRAWN	TRK	1/22/21	
CHECKED BY			
APPROVED			

CATALOG SHEET, 429
DIAPHRAGM VALVE STANDARD MODEL

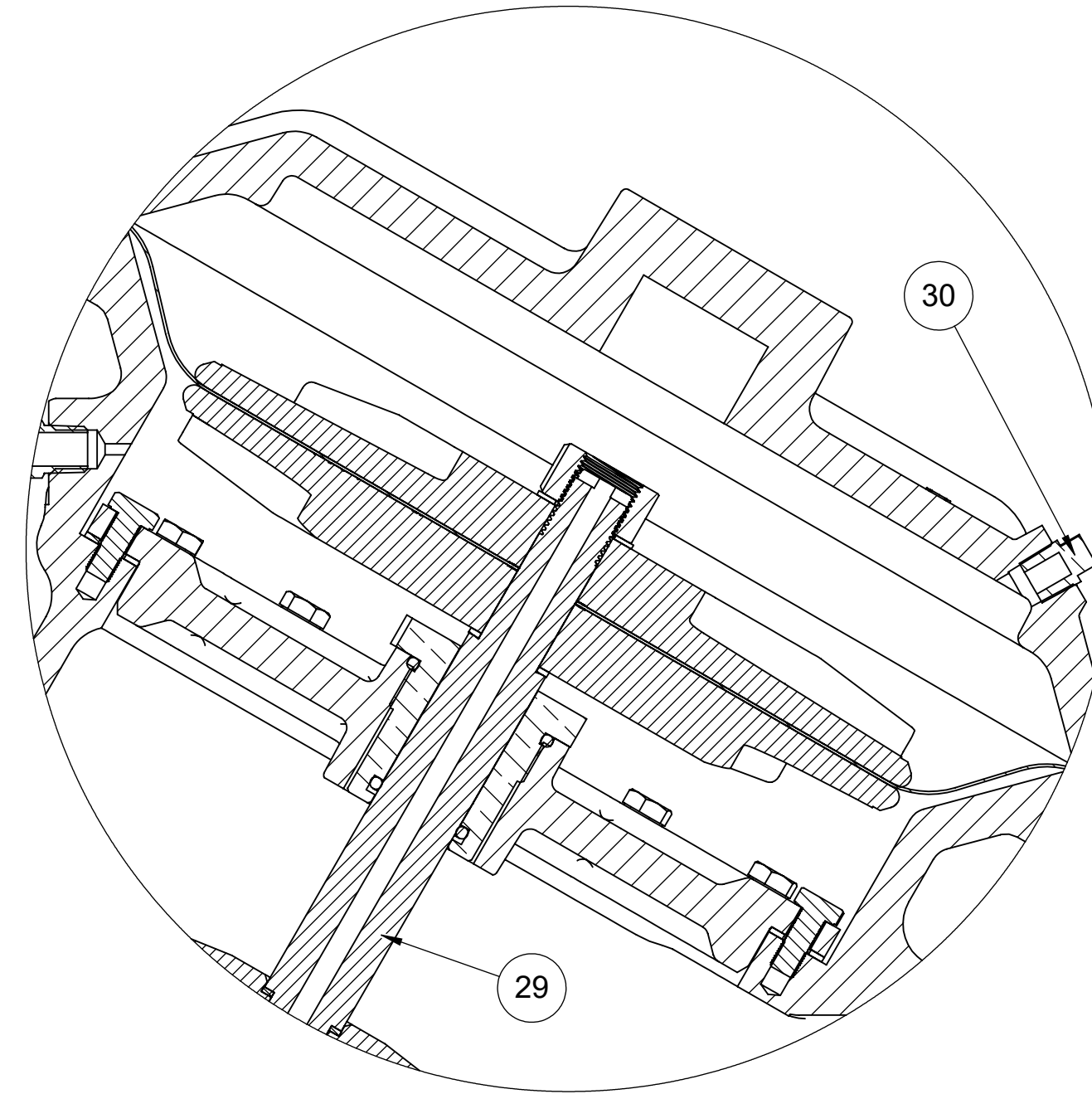
D DWG NO. 1077619 REV. S

SCALE SOLIDWORKS FORMAT SHEET 1 OF 2

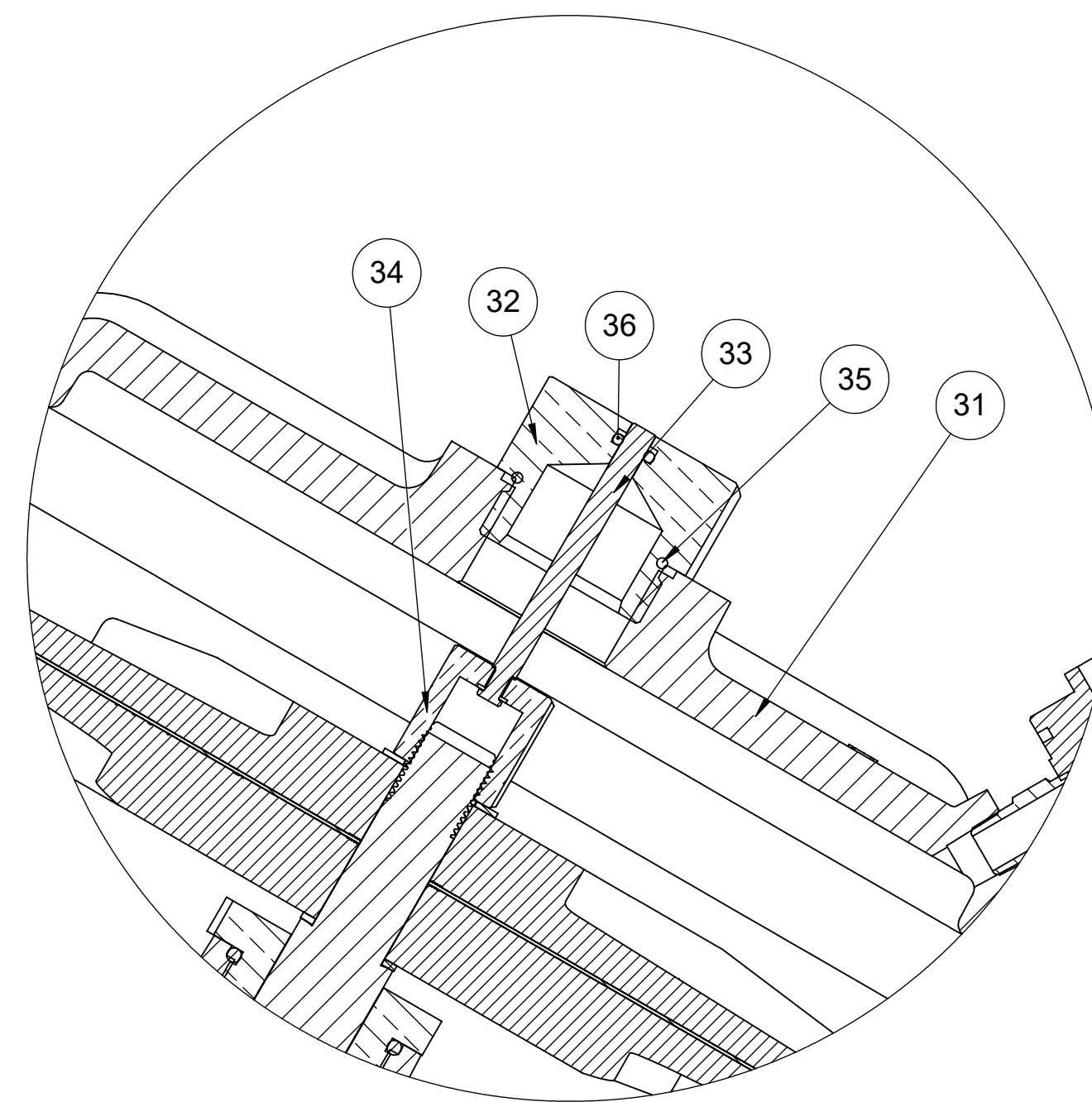
8 7 6 5 4 3 2 1



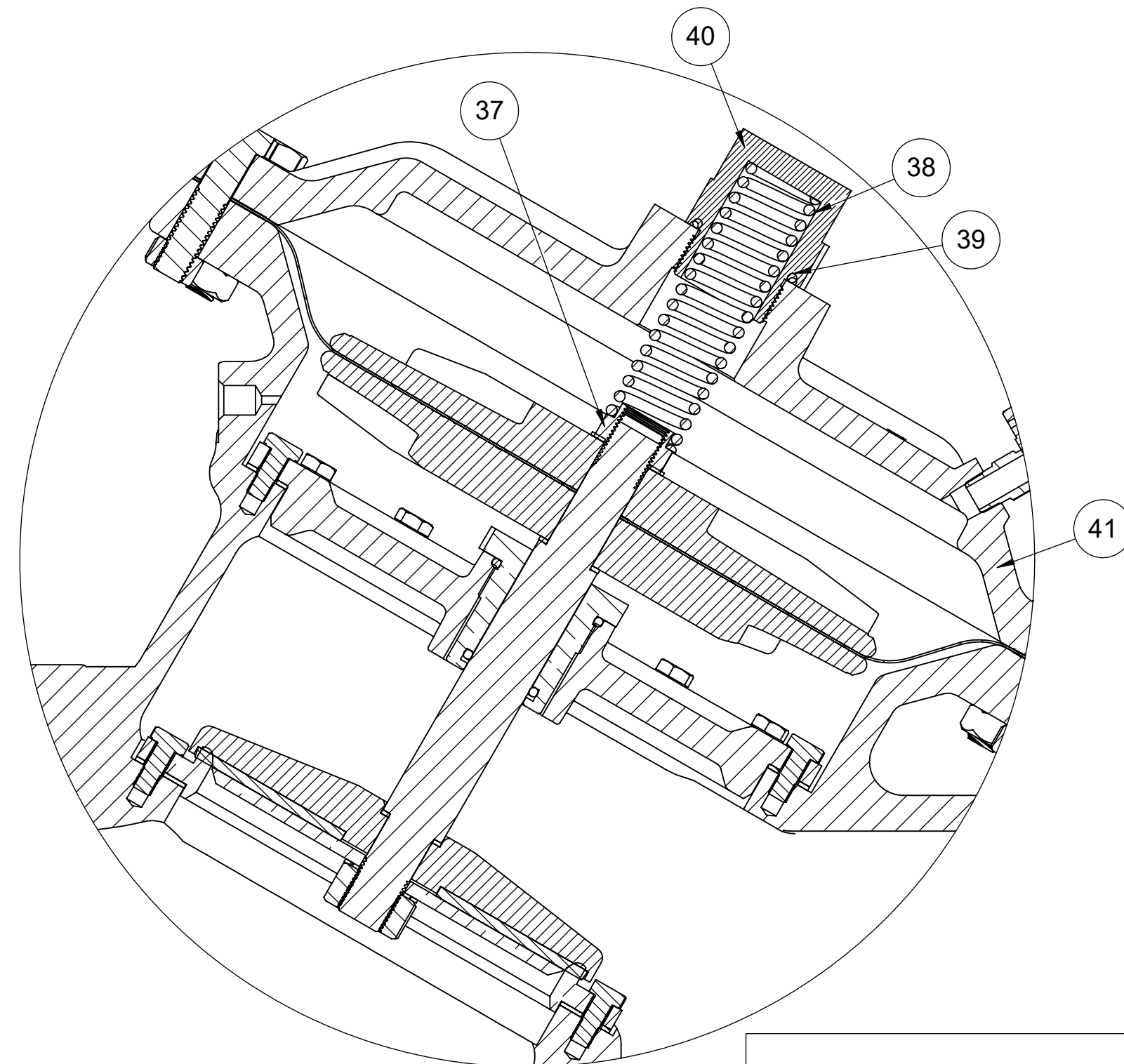
1073184 (V42-3010-00000)
LIMIT STOP



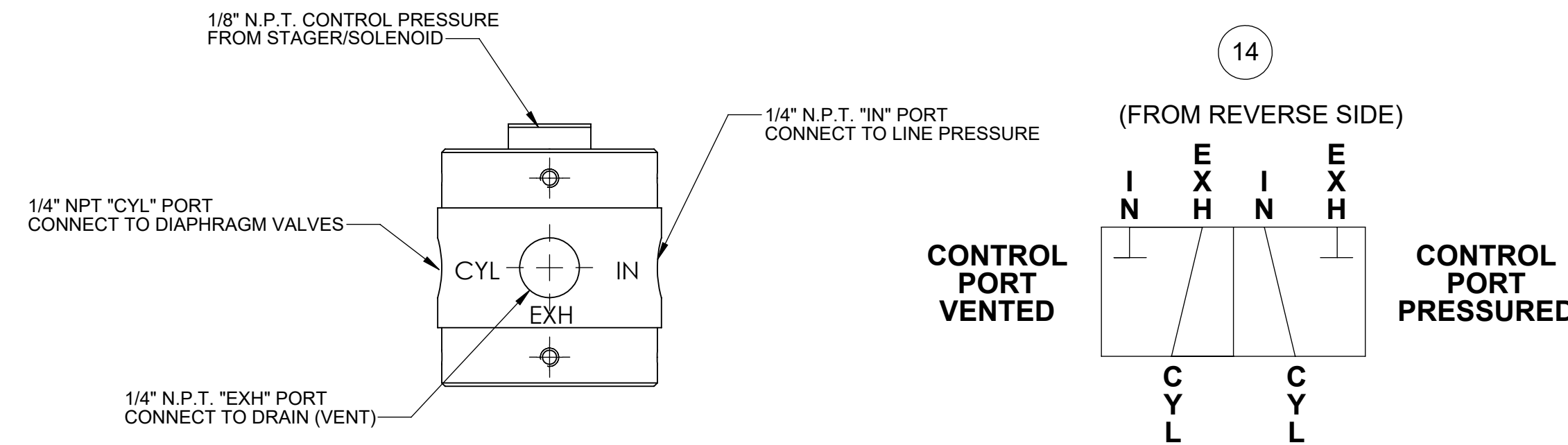
1073187 (V42-3030-00000)
NORMALLY CLOSED



1082048 (V42-3020-00000)
POSITION INDICATOR



4500139 (V42-3002-00000)
SPRING ASSIST CLOSED



THIS 3-WAY "NORMALLY CLOSED" AUXILIARY PILOT VALVE (PART NO. 429-VP) IS FURNISHED WITH ALL V42L DIAPHRAGM VALVES. IT ACCELERATES THE CLOSING AND OPENING SPEED OF THE VALVE.

REPAIR PARTS KITS	
DESCRIPTION	PARTS NO.
INT. PARTS KIT (LIMIT STOP) CONSISTS OF STANDARD ITEM NO'S 26, 27, 28	1074638 (429-LS)
INT. PARTS KIT (NORM. CLOSED) CONSISTS OF STANDARD ITEM NO'S 4(2), 5, 6, 7, 19, 22(12), 29	1074654 (429-RG)
INT. PARTS KIT (SPRING ASSIST CLOSED) CONSISTS OF STANDARD ITEM NO'S 37, 38, 39	1074655 (429-SC)
INT. PARTS KIT (POSITION INDICATOR) CONSISTS OF STANDARD ITEM NO'S 24(2), 32 THRU 36	1074647 (429-PI)

CONVERSION KITS	
DESCRIPTION	PART NO.
CONVERSION KIT (LIMIT STOP) CONSISTS OF STANDARD ITEM NO'S 16 (1), 25 THRU 28	1074639 (429-LSC)
CONVERSION KIT (SPRING ASSIST CLOSED) CONSISTS OF STANDARD ITEM NO'S 11(2), 16, 37 THRU 41	1074656 (429-SCC)
CONVERSION KIT (POSITION INDICATOR) CONSISTS OF STANDARD ITEM NO'S 24(2), 31 THRU 36	1074648 (429-PIC)

REVISIONS				
ECN	REV.	DESCRIPTION	DATE	APP'D
1832	R	CATALOG SHEET UPDATE, ON AQ TEMPLATE	1/22/21	
1943	S	CATALOG SHEET UPDATE, CORRECTIONS TO KITS	9/15/21	

LIMIT STOP MODEL				
ITEM NO.	DESCRIPTION	STD.	PART NUMBER	QTY.
25	CAP, 429, LIMIT STOP	CAST IRON	* 1074617 (429-CCC)	1
26	SCREW, HEX HD CAP, 5/8-18 X 4.5"	SS	* 1074660 (429-U)	1
27	NUT, LIMIT STOP	SS	* 1074434 (426-U)	1
28	O-RING, 2-112	BUNA-N	* 1071690 (ORB-112)	1

NORMALLY CLOSED MODEL				
ITEM NO.	DESCRIPTION	STD.	PART NUMBER	QTY.
29	SHAFT, 429, NORMALLY CLOSED	SS	* 1074637 (429-LL)	1
30	MALE PIPE PLUG, 1/4 NPT	PLATED STEEL	* 1071918 (PLZ-0008)	1

POSITION INDICATOR MODEL				
ITEM NO.	DESCRIPTION	STD.	PART NUMBER	QTY.
31	CAP, 429, POSITION INDICATOR	CAST IRON	* 1074618 (429-CF)	1
32	GUIDE, SHAFT, 429, BRASS		* 1074624 (429-GF)	1
33	SHAFT, 429, SS, MACH		* 1074649 (429-PM)	1
34	NUT, 429, BRASS		* 1074658 (429-TB)	1
35	O-RING, 2-128, NITRILE		* 1071694 (ORB-128)	1
36	O-RING, 2-106, NITRILE, TFLN CTD		* 1071688 (ORB-108TC)	1

SPRING ASSIST CLOSED				
ITEM NO.	DESCRIPTION	STD.	PART NUMBER	QTY.
37	NUT, SPRING RETAINER	SS	* 1074663 (429-X)	1
38	SPRING, COMPRESSION	SS	* 1074657 (429-SS)	1
39	O-RING, 2-222, NITRILE		* 1079839 (ORB-222)	1
40	NUT, SPRING RETAINER, 429, BRASS		* 1074659 (429-TT)	1
41	CAP, 429, SPRING ASSIST CLOSED	CAST IRON	* 1074616 (429-CC)	1

- NOTE
1. SPRING ASSIST CLOSED MODEL CANNOT BE COMBINED WITH LIMIT STOP OR POSITION INDICATOR.
 2. SPRING ASSIST OPEN MODEL AVAILABLE.

SEE REVERSE SIDE FOR STANDARD MODEL NORMALLY OPEN MODEL

THIS DOCUMENT IS SOLELY THE PROPERTY OF AQ-MATIC. REPRODUCTION, USE DISCLOSURE, OR TRANSMISSION OF THIS DOCUMENT OR DETAILS CONTAINED HEREIN, IN PART OR IN WHOLE, IS PROHIBITED WITHOUT THE WRITTEN CONSENT OF AQ-MATIC ENGINEERING. THIS DOCUMENT AND ANY COPIES SHALL BE RETURNED TO AQ-MATIC UPON WRITTEN REQUEST.

DO NOT SCALE DRAWING DIMS. ARE IN INCHES (mm) UNLESS OTHERWISE SPECIFIED.
CORNER FILLETS R.005-020 (127-508)
TOLERANCES:
ANGLES: ± 1°
1 PLACE: XX ± 0.15 (0.38)
2 PLACE: XX ± 0.1 (0.3)
3 PLACE: XXX ± 0.05 (0.13)

THIRD ANGLE PROJECTION	APPROVALS	DATE	
	TRK	1/22/21	
	CHECKED BY		
	APPROVED		

CATALOG SHEET, 429 DIAPHRAGM VALVE STANDARD MODEL

D	DWG NO.	1077619	REV.	S
SCALE	SOLIDWORKS FORMAT		SHEET 2 OF 2	