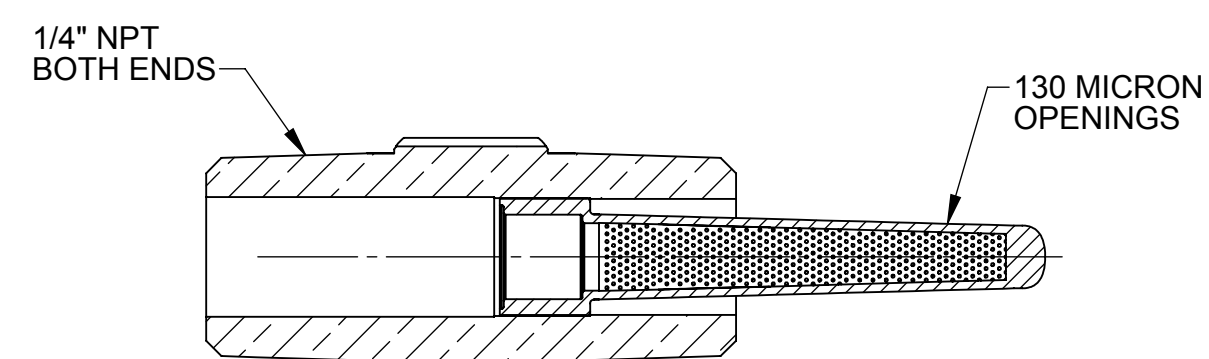
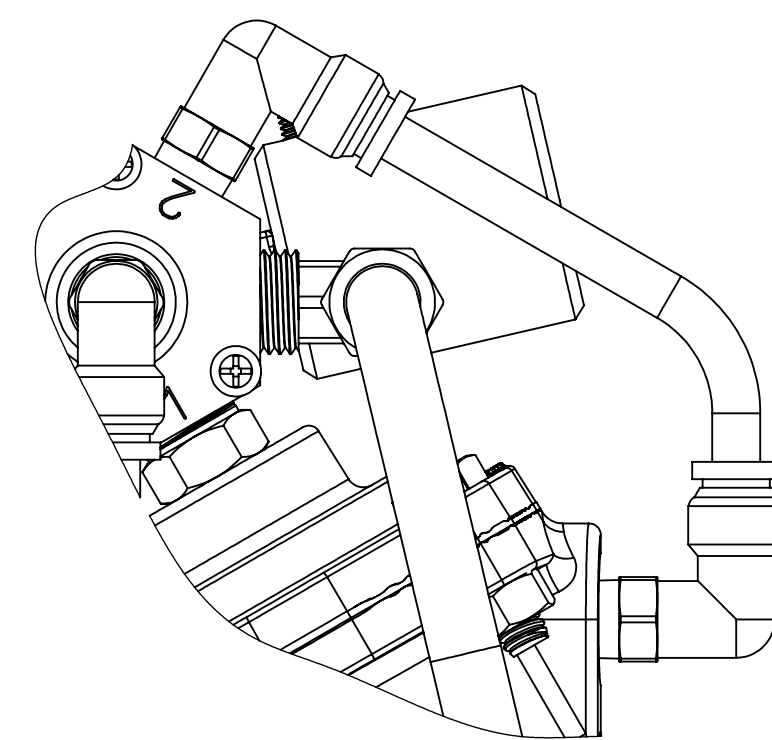


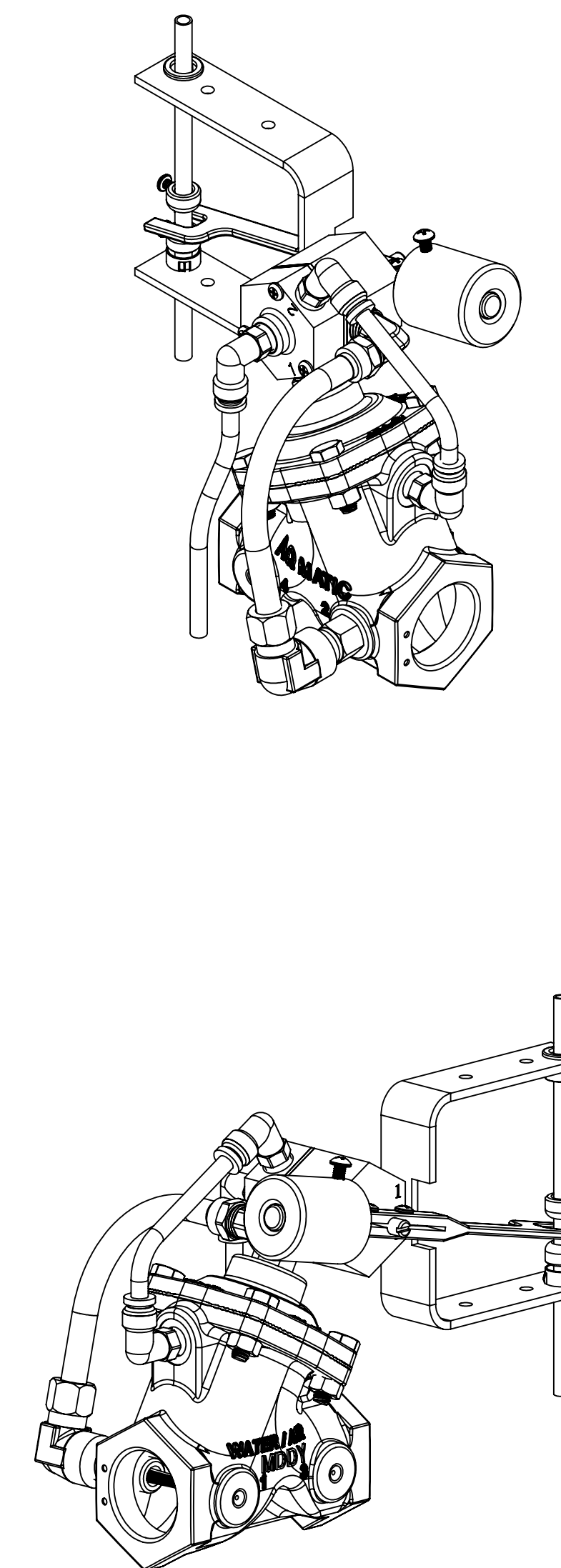
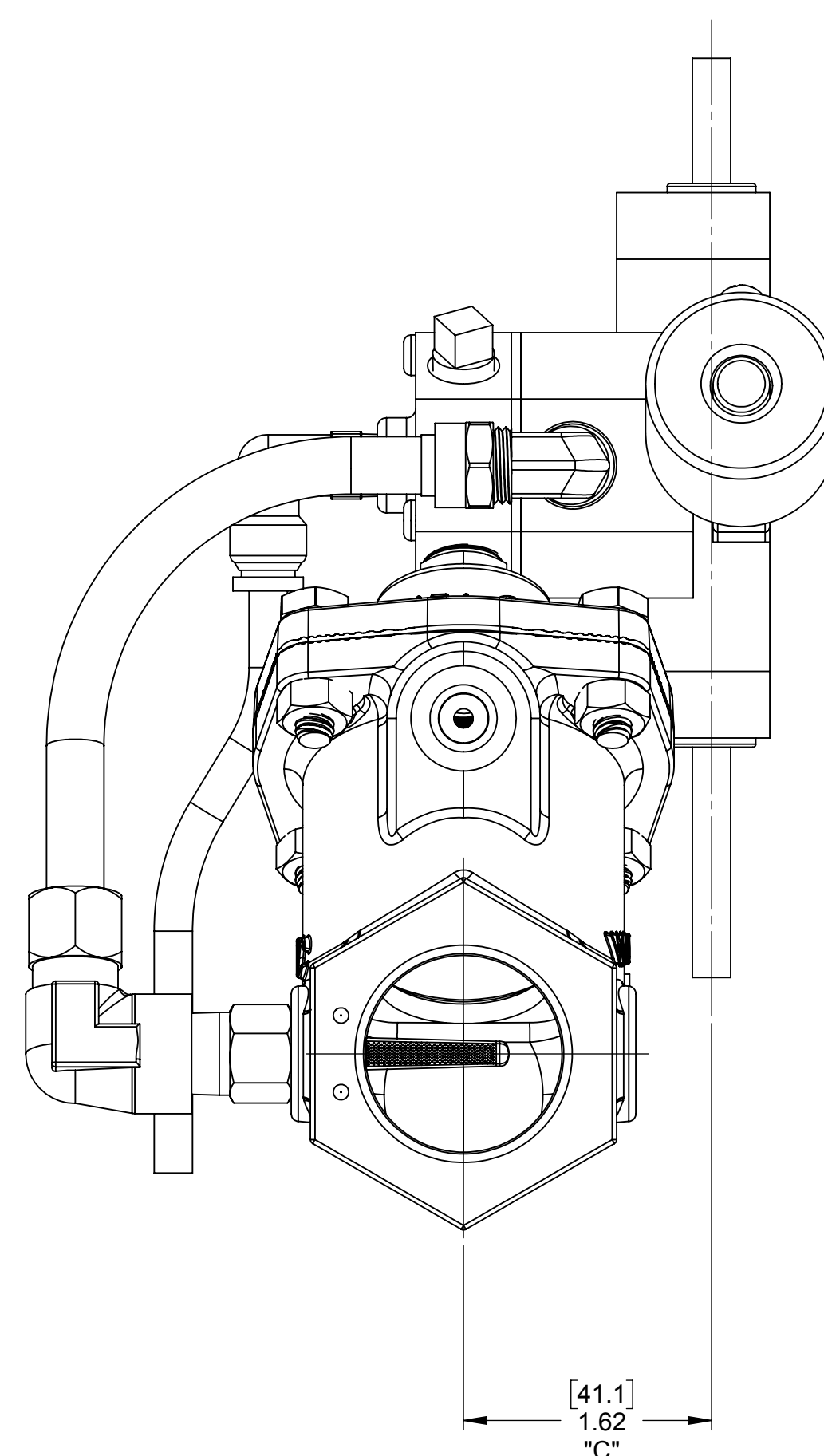
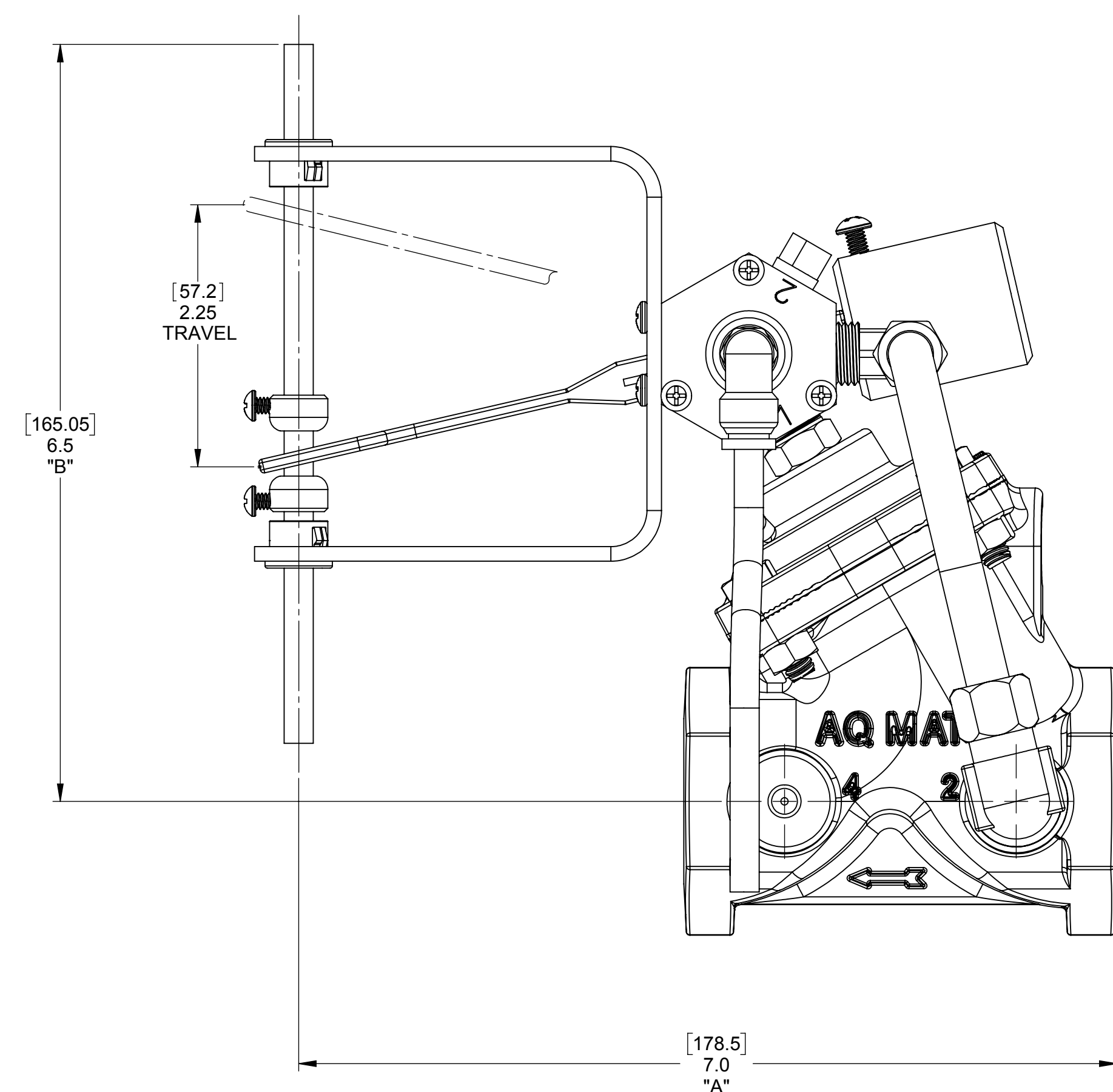
REVISIONS						
ZONE	ECN	REV.	DESCRIPTION	DATE	APP'D	
	104648	F	1-UPDATED TITLE BLOCKS, 2-ADD'D: PG-3 & 6 FOR STD FLOAT VERSIONS, 3-ADD'D: 421 SAC VIEW ON PG'S 3 & 4.	22MAY15	TJM	
	104648	G	1-IT#14-WAS: 1074001, 2-ROTATED IT#22 180°, 3-IT#14-WAS: 1074001, 4-ADDED SIDE VIEWS, 5-IT#15-WAS: 1074001, 6-IT#18-REMD: 1074002, 7-IT#15-WAS: 1074001, 8-IT#18-REMD: 1074002	19AUG15	TJM	
	105334	H	1-WAS: 3029346 NOW: 16566-8, 2-IT# 18 WAS IT# 26, 3-ADD'D: PG-7 (CLOSED IF- LOW)	25NOV15	TJM	
	1001	J	AQ Matic update & verified part numbers	20JAN17	MGS	
	1372	K	1-UPDATE VALVE BODIES/CAPS, 2-CORRECT ASSEMBLY ISSUES	12/06/18	KJB	



**SECTION A-A  
SCALE 2 : 1  
STRAINER ASSEMBLY**



**POWERED OPEN OPTION  
FOR DETAILED ASSEMBLY SEE PG'S - 2 & 5**



VALVE SERIES	421	424	425	426	427	428
PIPE SIZE	1"	1-1/4", 1-1/2"	2"	2"	3"	4"
A	7.20 182.9	8.29 210.6	9.29 132.1	9.87 236.0	10.80 274.3	12.80 325.1
B	6.50 165.1	7.81 198.4	8.37 212.6	9.56 242.8	10.56 268.2	13.81 350.8
C	1.70 43.2	4.20 106.7	5.20 132.1	5.20 132.1	6.20 157.5	6.20 157.5

**421-428  
FLOAT VALVES  
ON THIS PAGE**

COMPONENTS/ASSEMBLIES TO BE COMPLIANT AND COMPATIBLE WITH EUROPEAN UNION DIRECTIVE 2011/65/EC (ROHS2) & REGULATION (EU) 2017/2450 (REACH) REQUIREMENTS

THIS DOCUMENT IS SOLELY THE PROPERTY OF AQ Matic VALVE & CONTROLS COMPANY INC. REPRODUCTION, USE, DISCLOSURE, OR TRANSMISSION OF THIS DOCUMENT OR DETAILS CONTAINED HEREIN, IN PART OR IN WHOLE, IS PROHIBITED WITHOUT THE WRITTEN CONSENT OF AQ Matic ENGINEERING. THIS DOCUMENT AND ANY COPIES SHALL BE RETURNED TO AQ Matic UPON REQUEST.

DO NOT SCALE DRAWING DIMS ARE IN INCHES (mm) INTERPRET DIMS AND TOLERANCES PER ASME Y14.5M-2009 UNLESS OTHERWISE SPECIFIED. ALL FINISHED MACHINED SURFACES 125 / OR BETTER. TOLERANCES:  
ANGLES: 1°  
1 PLACE .X ± .015 (0.38)  
2 PLACE .XX ± .01 (0.3)  
3 PLACE .XXX ± .005 (0.13)

THIRD ANGLE PROJECTION	APPROVALS	DATE	TITLE
	SM	04/18/11	CATALOG SHEET, 420 DAIPHAGM FLOAT OPERATED VALVES
DRAWN	APPROVED		SIZE <b>B</b> DWG NO. <b>1078190</b> REV <b>K</b>
CHECKED			SCALE 1:1 SHEET 1 OF 7

**AQ Matic** Valve & Controls Company Inc.

REVISIONS					
ZONE	ECN	REV.	DESCRIPTION	DATE	APP'D
			SEE SHEET ONE FOR NOTES		

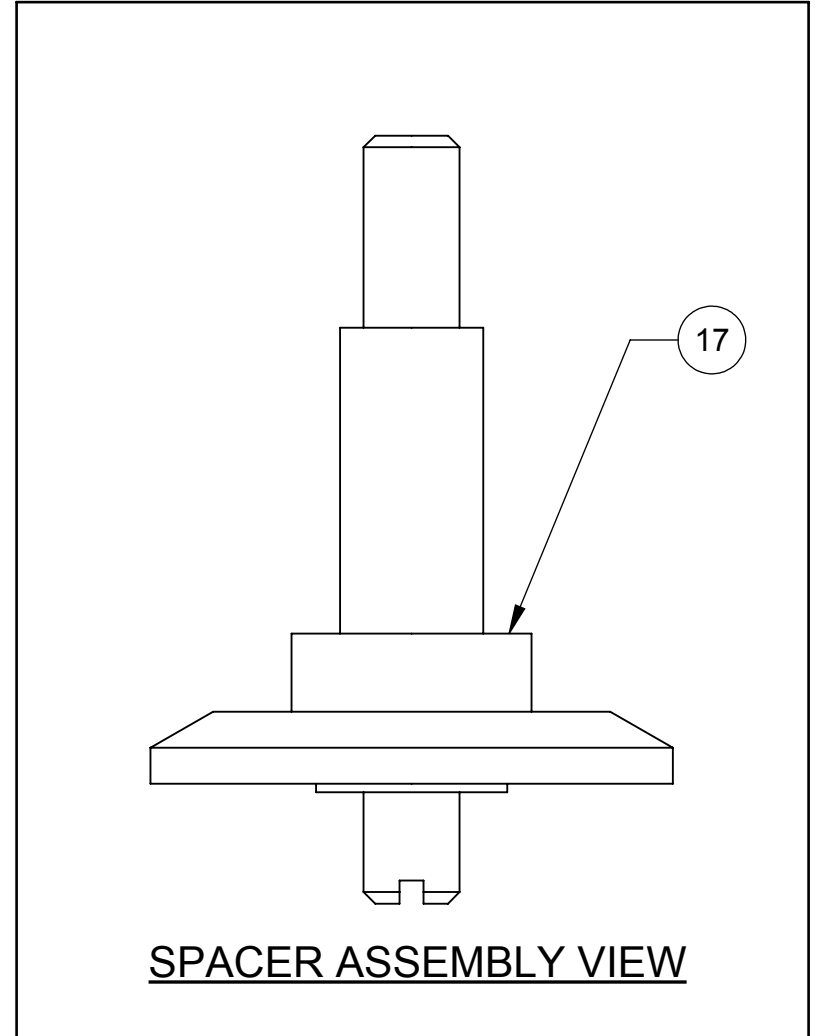
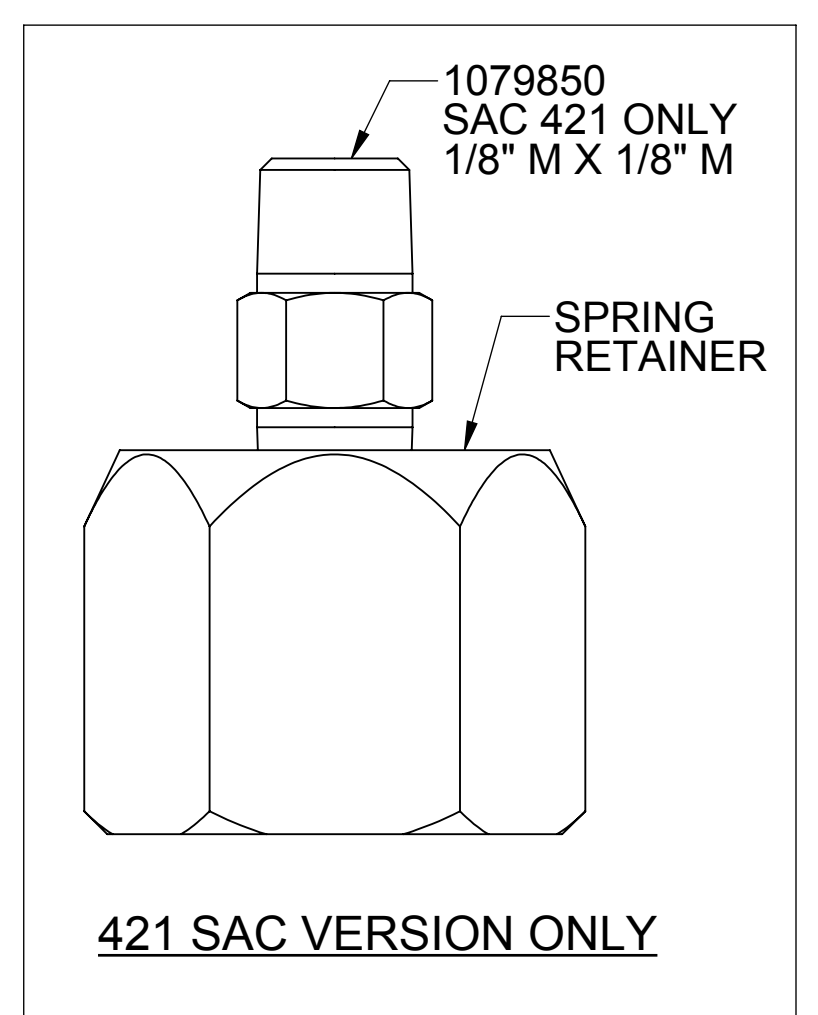
ITEM NO.	DESCRIPTION	PART NUMBER	QTY. (421)
1	PILOT CNTL ASSY, 348, -AE	1073992	1
2	BRACKET, 348,	1074012	1
3	RD. HD. MACH. SCREW, (6-32 X 1/4)	1072370	2
4	COUNTERWEIGHT, STD	1074014	1
5	CENTERING COLLAR, BRASS	1074017	2
6	LEVER, 348	1074034	1
7	BUSHING,	1074016	2
8	FLOAT ROD,	1074023	1
9	STUD, THRD, #12-24 UNC-2A, BRASS	1074025	1
10	GREASE, LUBRIPLATE, FGL-2	16856-8	1
11	FLOAT,SAND,5"	1073996	1
12	RD. HD. MACH SCREW, (8-32 X 1/2)	1072375	1
13	STRAINER,	1074002	1
14	STRAINER ASSY	1074004	1
15	SPACER, BRASS	1074127	1
16	SCREW, PHLP, PN HD	1072371	4
17	FITTING, ELBOW, BRASS	1074037	1
18	TUBING, POLY 1/4" O.D. X .035	1071936	1
19	FITTING,INSERT,3/8	10332	1
20	TUBING, POLY 1/4" O.D. X .035	1071936	1
21	FITTING,TUBE,.37 OD	1071940	1
22	FITTING, NIPPLE,1/4X1/8 REDUCR	1074038	1
23	FITTING, ELBOW,TUBE,1/8MNPT X	1078765	3
24	FITTING, ELBOW,TUBE 1/4FNPTX3/	1074007	1

SEE NOTE 2 →

PAINT OPTIONS	
PART #	COLOR
42805	RED
43198	BLUE
42807	BLACK
42808	ASH

NOTES:

1. DRILL AND TAP PORT #2 WITH 1/4" NPT. [421 VALVE]
2. SEE DRAWING 1078193 FOR ROD LENGTH/MATERIAL OPTIONS.
3. 421 MODEL IS SHOWN ON THIS DRAWING SHEET. SEE SHEET 4, 5, & 6 FOR 424-428 MODELS.
4. STANDARD 421 MODEL SHOWN.



POWERED OPEN VERSION  
**421 FLOAT VALVES  
 ONLY ON THIS PAGE**

COMPONENTS/ASSEMBLIES TO BE COMPLIANT AND COMPATIBLE WITH EUROPEAN UNION DIRECTIVE 2011/65/EU (REACH) & REGULATORY TECHNICAL REQUIREMENTS

THIS DOCUMENT IS SOLELY THE PROPERTY OF AQ Matic VALVE & CONTROLS COMPANY INC. REPRODUCTION, USE, DISCLOSURE, OR TRANSMISSION OF THIS DOCUMENT OR DETAILS CONTAINED HEREIN, IN PART OR IN WHOLE, IS PROHIBITED WITHOUT THE WRITTEN CONSENT OF AQ Matic ENGINEERING. THIS DOCUMENT AND ANY COPIES SHALL BE RETURNED TO AQ Matic UPON REQUEST.

DO NOT SCALE DRAWING. DIMS. ARE IN INCHES (mm) UNLESS OTHERWISE SPECIFIED. INTERPRET DIMS AND TOLERANCES PER ASME Y14.5M-2009. ALL FINISHED MACHINED SURFACES 125 √ OR BETTER.

TOLERANCES:  
 ANGLES: ± 1°  
 1 PLACE .XX: ± 0.15 (0.38)  
 2 PLACE .XXX: ± 0.1 (0.3)  
 3 PLACE .XXXX: ± 0.05 (0.13)

THIRD ANGLE PROJECTION	APPROVALS	DATE	 <b>AQ Matic</b> Valve & Controls Company Inc.
	SM	04/18/11	
	APPROVED		
	CHECKED		

TITLE	CATALOG SHEET, 420 DAIPHGRAM FLOAT OPERATED VALVES
SIZE	<b>B</b>
DWG NO.	<b>1078190</b>
SCALE	1:1

REV K SHEET 2 OF 7

REVISIONS					
ZONE	ECN	REV.	DESCRIPTION	DATE	APPD
SEE SHEET ONE FOR NOTES					

ITEM NO.	DESCRIPTION	PART NUMBER	QTY. (421)
1	PILOT CNTL ASSY, 348, -AE	1073992	1
2	BRACKET, 348	1074012	1
3	RD. HD. MACH. SCREW, (6-32 X 1/4)	1072370	2
4	COUNTERWEIGHT, STD	1074014	1
5	CENTERING COLLAR, BRASS	1074017	2
6	LEVER, 348	1074034	1
7	BUSHING	1074016	2
8	FLOAT ROD	1074023	1
9	STUD, THRD, #12-24 UNC-2A, BRASS	1074025	1
10	GREASE, LUBRIPLATE, FGL-2	16856-8	1
11	FLOAT, SAND, 5"	1073996	1
12	RD. HD. MACH SCREW, (8-32 X 1/2)	1072375	1
13	STRAINER	1074002	1
14	STRAINER ASSY	1074004	1
15	SPACER, BRASS	1074127	1
16	SCREW, PHLP, PN HD	1072371	4
17	FITTING, ELBOW, BRASS	1074037	1
18	PLUG, PIPE	1071903	1
19	FITTING, INSERT, 3/8	10332	1
20	TUBING, POLY 1/4" O.D. X .035	1071936	1
21	FITTING, TUBE, .37 OD	1071940	1
22	FITTING, NIPPLE, 1/4X1/8 REDUCR	1074038	1
23	FITTING, ELBOW, TUBE, 1/8MNPT X	1078765	1
24	FITTING, ELBOW, TUBE 1/4FNPTX3/	1074007	1

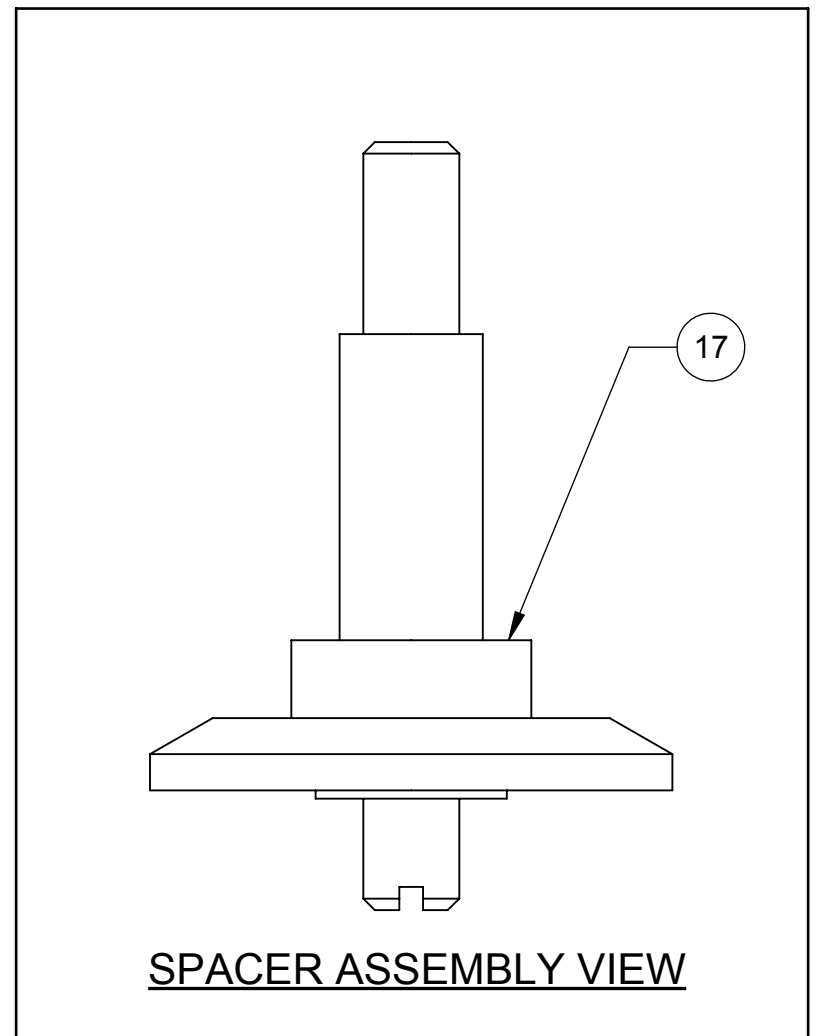
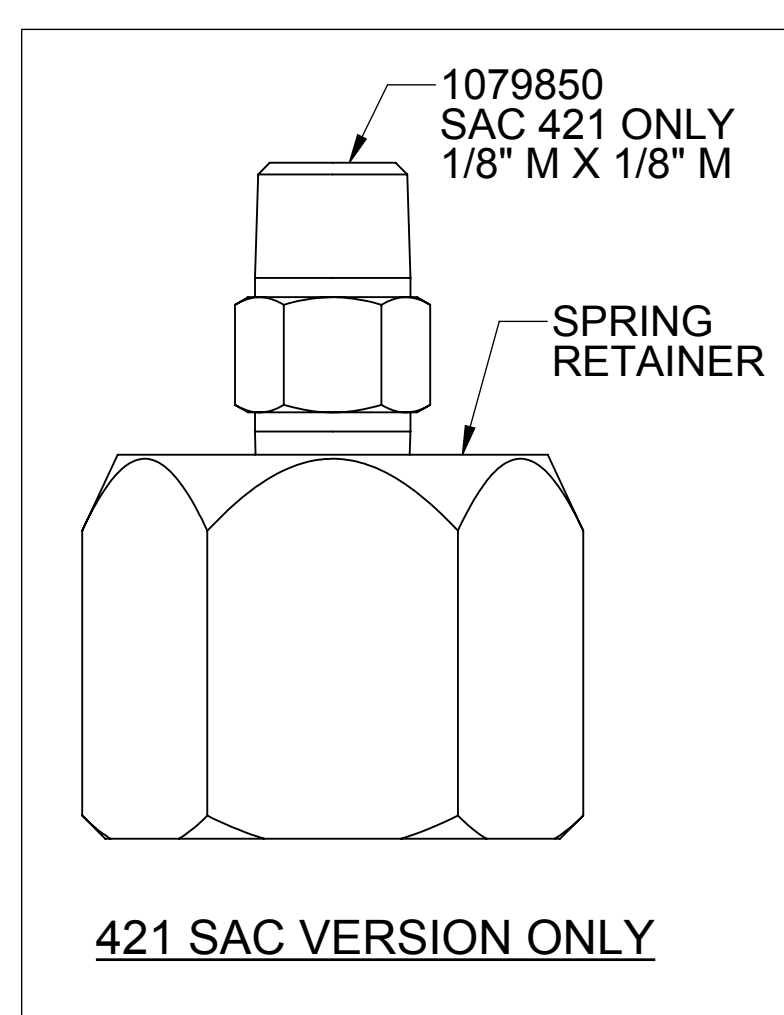
NOT ACTUAL LENGTH FOR ASSM REPRESENTATION ONLY.

SEE NOTE-2

PAINT OPTIONS	
PART #	COLOR
42805	RED
43198	BLUE
42807	BLACK
42808	ASH

NOTES:

1. DRILL AND TAP PORT #2 WITH 1/4" NPT. [421 VALVE]
2. SEE DRAWING 1078193 FOR ROD LENGTH/MATERIAL OPTIONS.
3. 421 MODEL IS SHOWN ON THIS DRAWING SHEET. SEE SHEET 4, 5, & 6 FOR 424-428 MODELS.
4. STANDARD 421 MODEL SHOWN.



STANDARD VERSION  
**421 FLOAT VALVES ON THIS PAGE**

THIS DOCUMENT IS SOLELY THE PROPERTY OF AQ Matic VALVE & CONTROLS COMPANY INC. REPRODUCTION, USE, DISCLOSURE, OR TRANSMISSION OF THIS DOCUMENT OR DETAILS CONTAINED HEREIN, IN PART OR IN WHOLE, IS PROHIBITED WITHOUT THE WRITTEN CONSENT OF AQ Matic ENGINEERING. THIS DOCUMENT AND ANY COPIES SHALL BE RETURNED TO AQ Matic UPON REQUEST.

DO NOT SCALE DRAWING DIMS ARE IN INCHES (mm) UNLESS OTHERWISE SPECIFIED. ALL FINISHED MACHINED SURFACES 125 / OR BETTER. TOLERANCES: ANGLES: ± 1° 1 PLACE .X ± .015 (0.38) 2 PLACE .XX ± .01 (0.3) 3 PLACE .XXX ± .005 (0.13)

THIRD ANGLE PROJECTION	DATE	04/18/11
APPROVALS	SM	
DRAWN	SM	
APPROVED		
CHECKED		

TITLE: CATALOG SHEET, 420 DAIPHGRAM FLOAT OPERATED VALVES

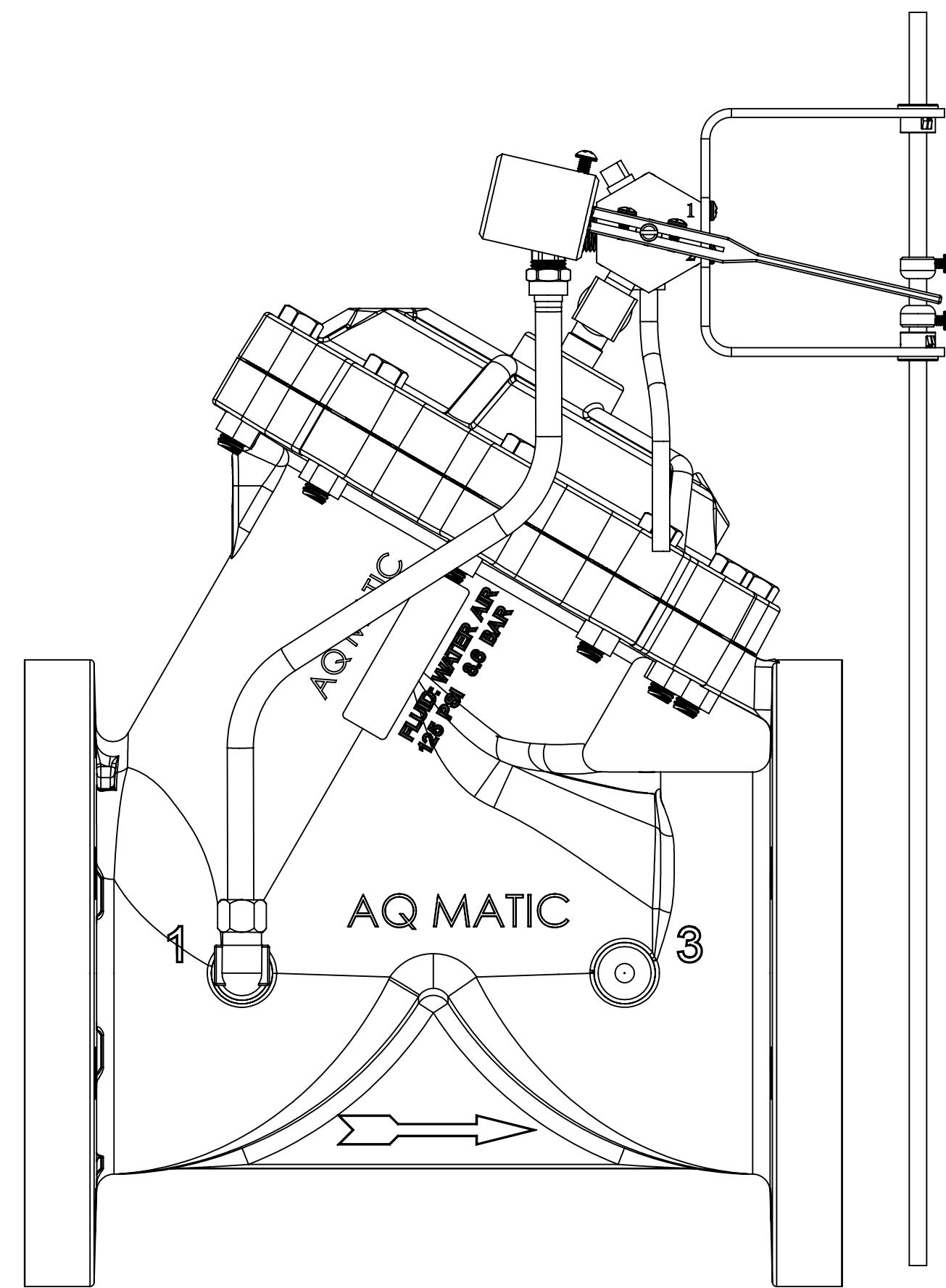
SIZE: B DWG NO.: 1078190 REV: K

SCALE: 1:1 SHEET 3 OF 7

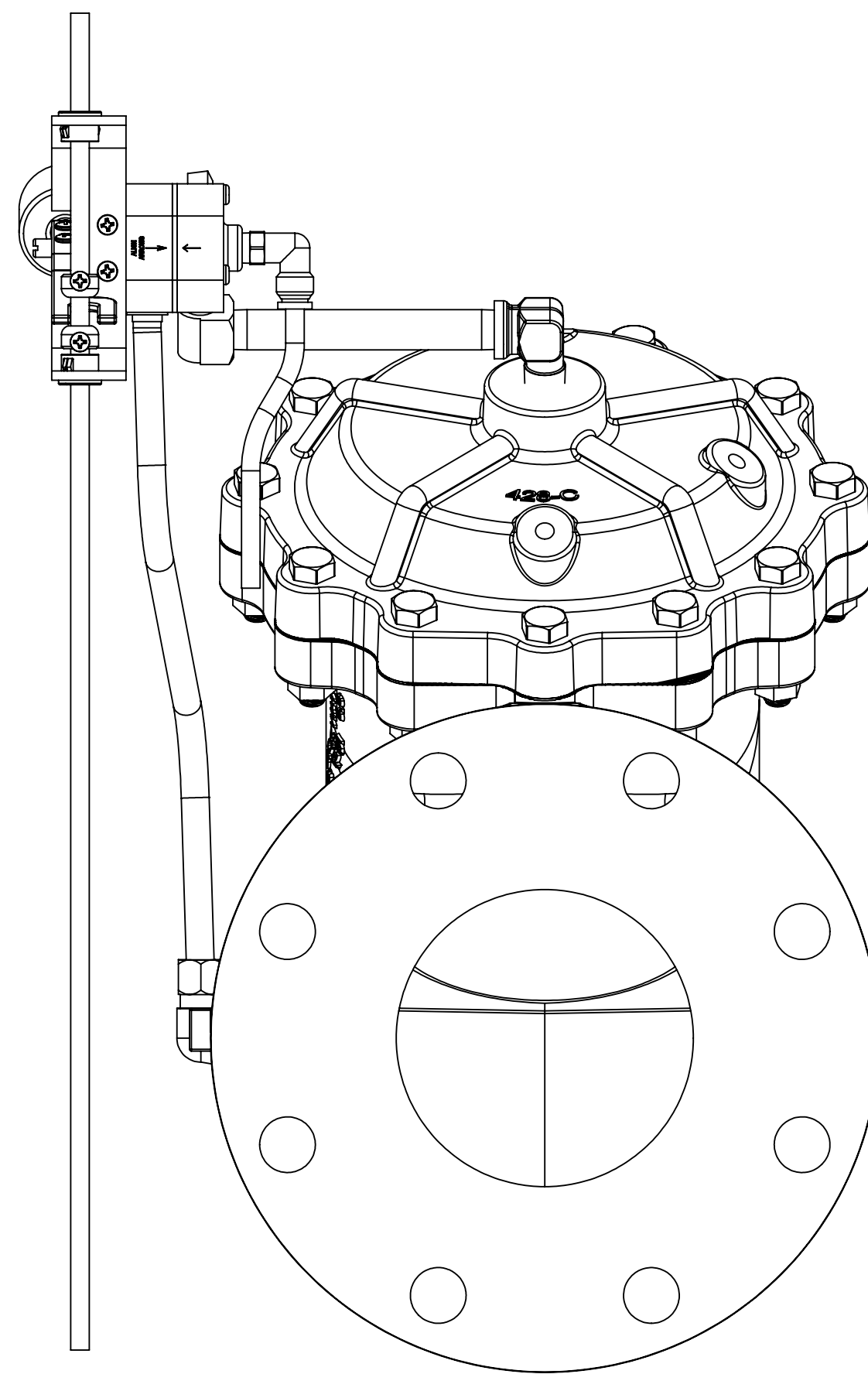
COMPONENTS / ASSEMBLIES TO BE COMPLIANT AND COMPATIBLE WITH EUROPEAN UNION DIRECTIVE 2011/65/EC (RoHS) & REGULATION (EU) 2015/1000 (REACH) REQUIREMENTS

**AQ Matic** Valve & Controls Company Inc.

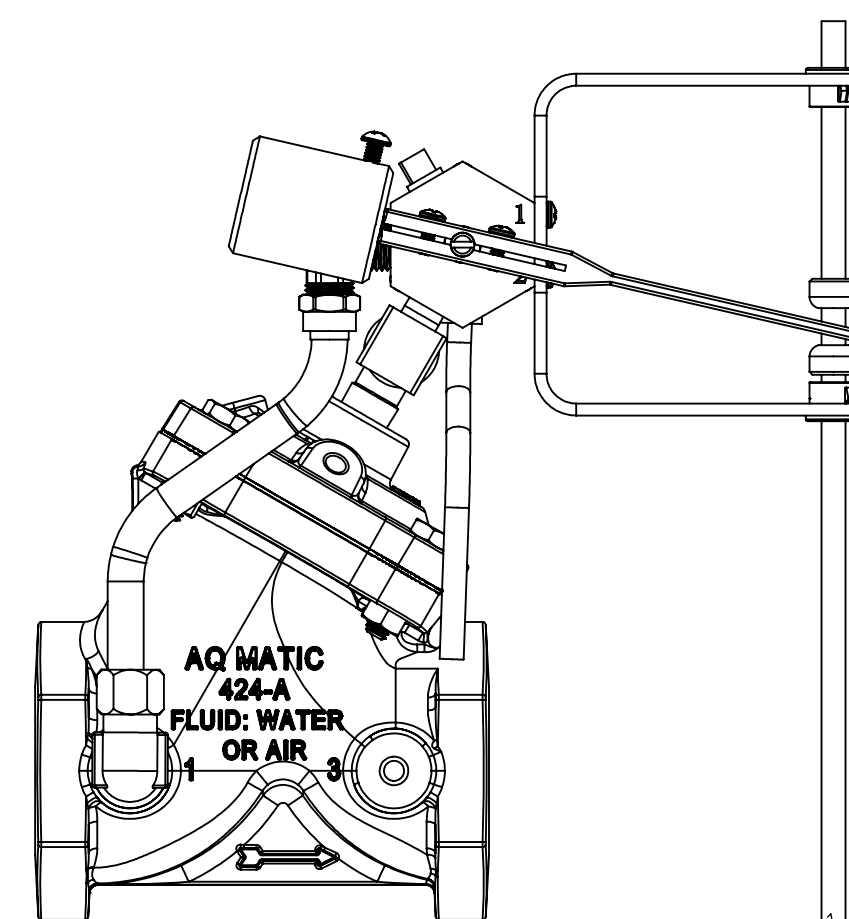
REVISIONS					
ZONE	ECN	REV.	DESCRIPTION	DATE	APPD
			SEE SHEET ONE FOR NOTES		



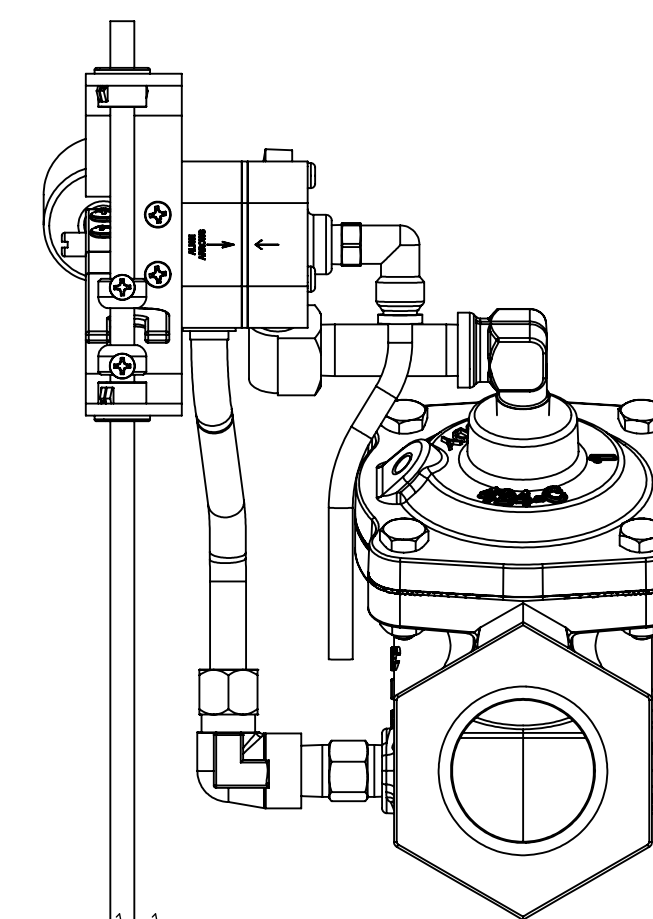
**BR1078190-428**



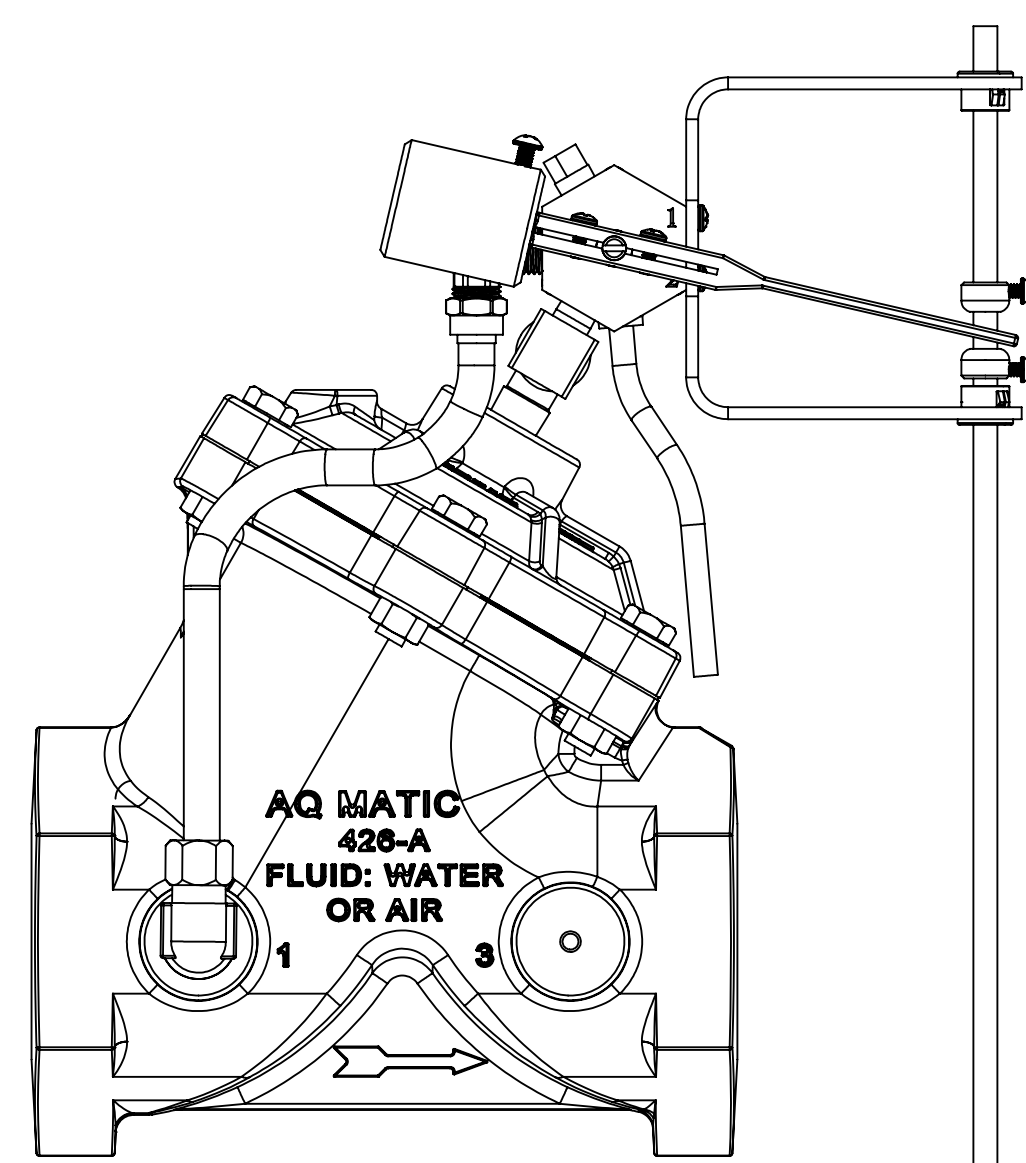
**BR1078190-427**



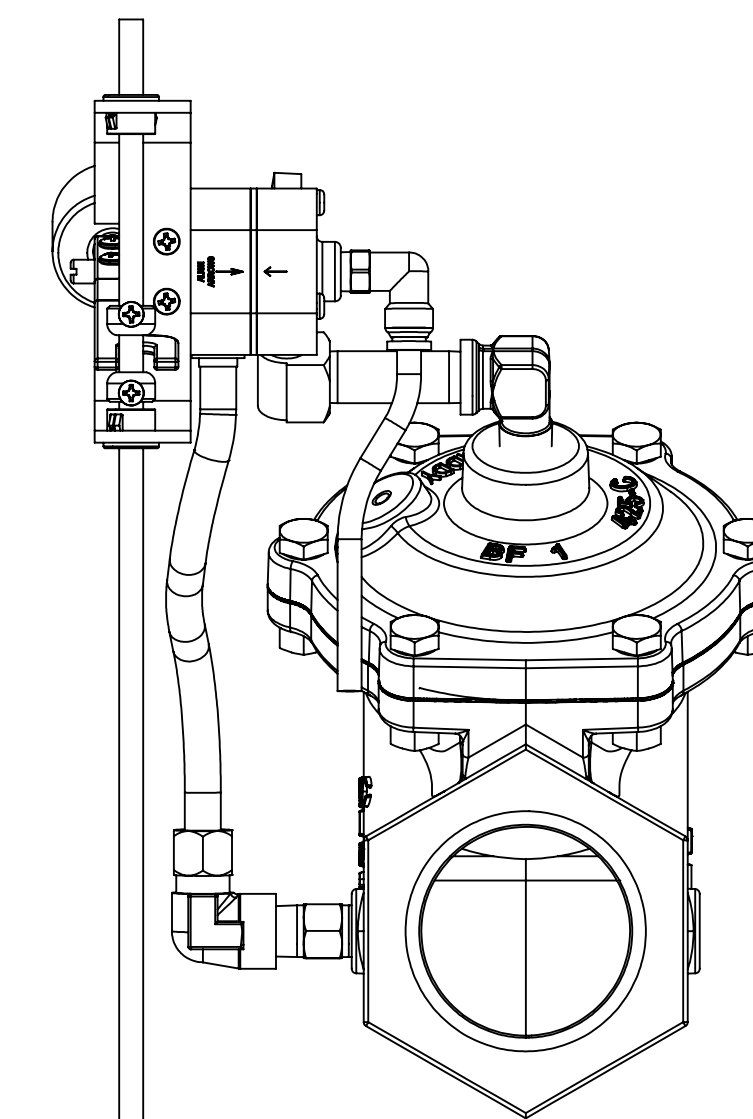
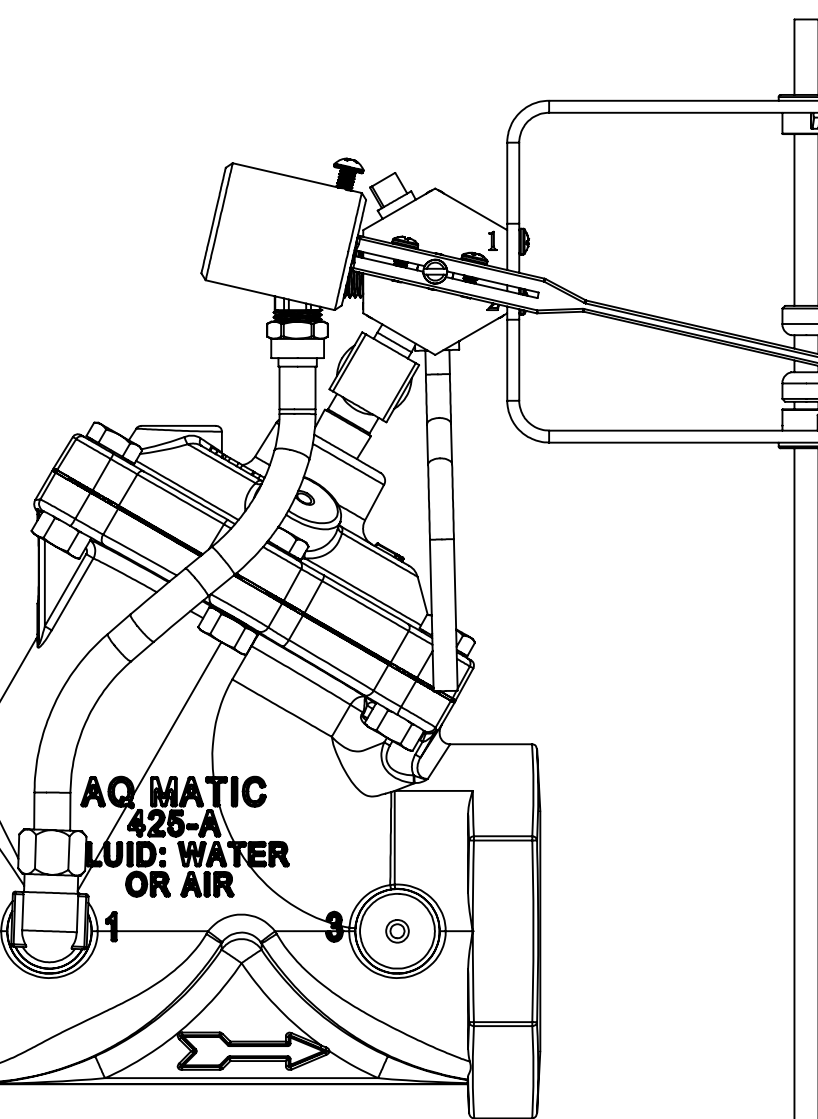
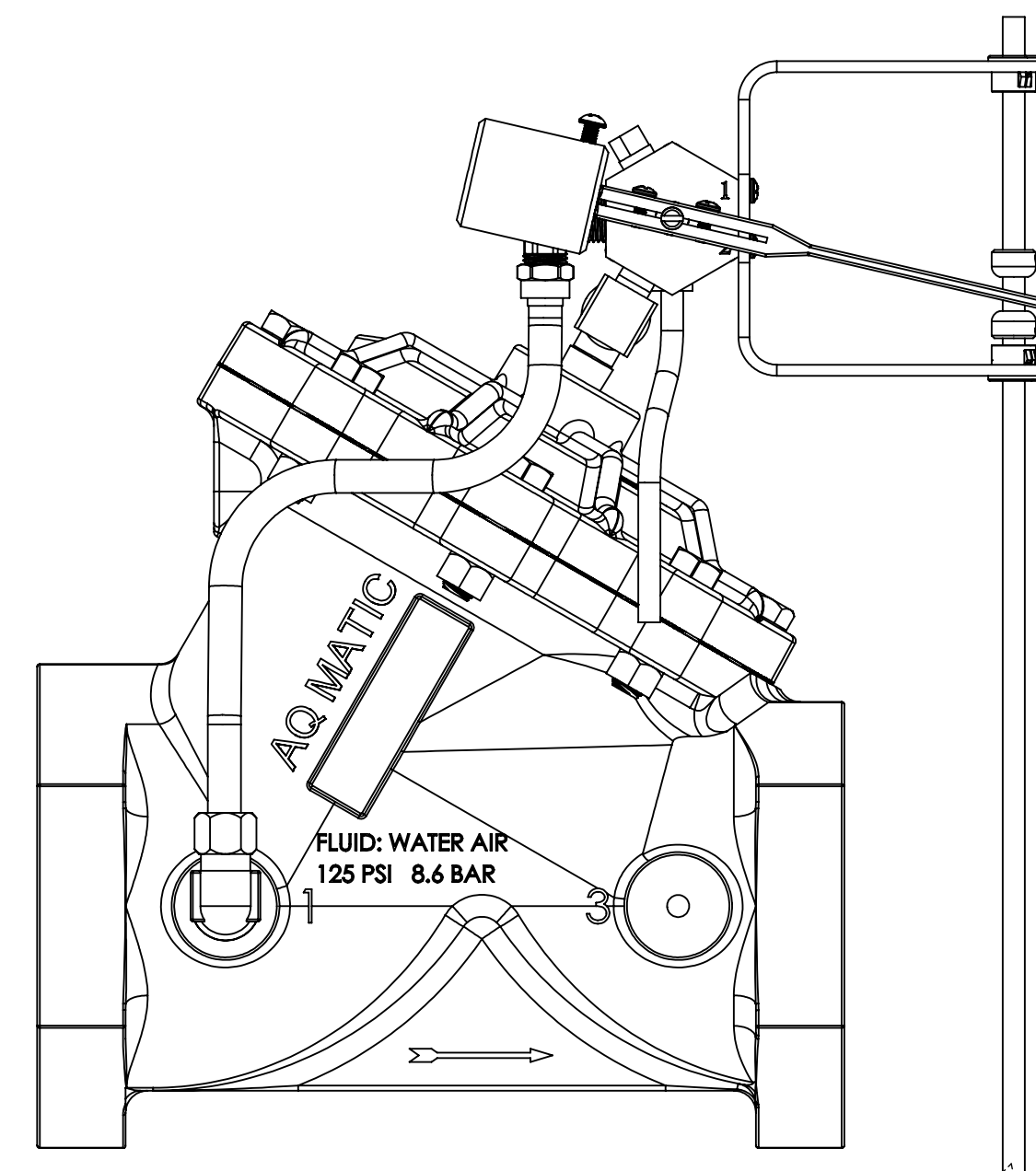
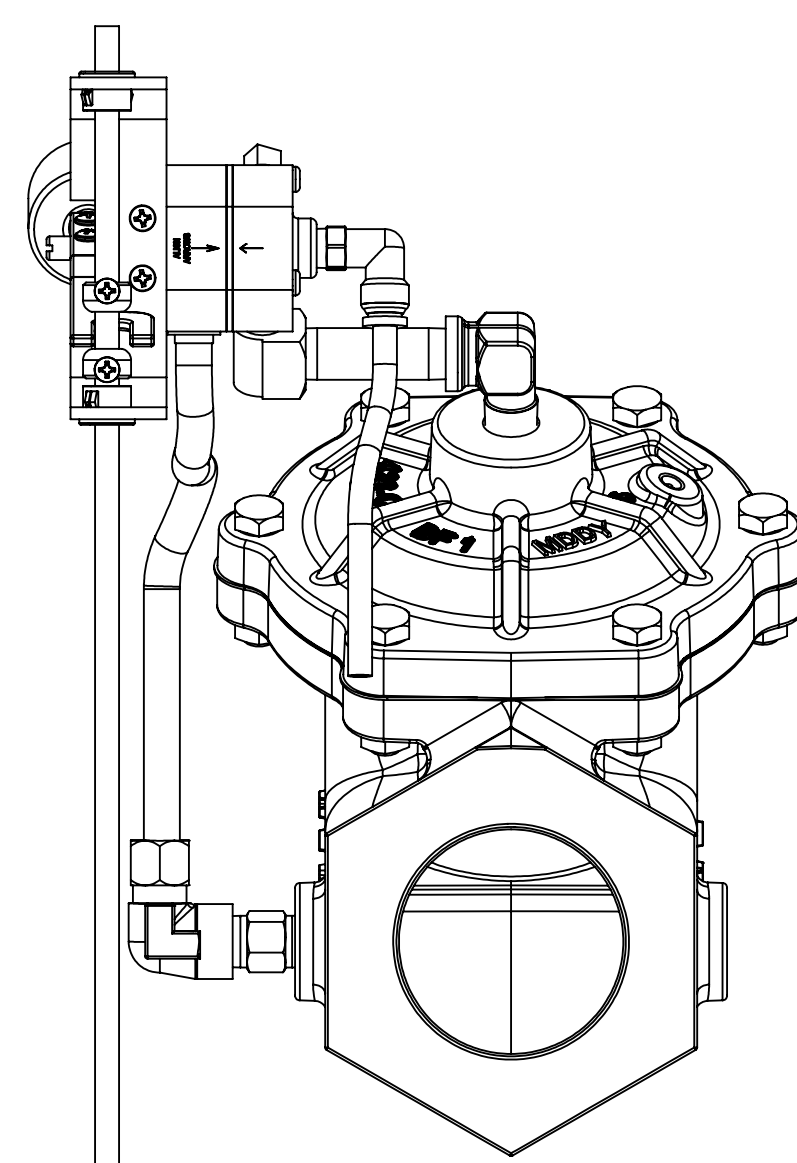
**BR1078190-424**



**BR1078190-425**

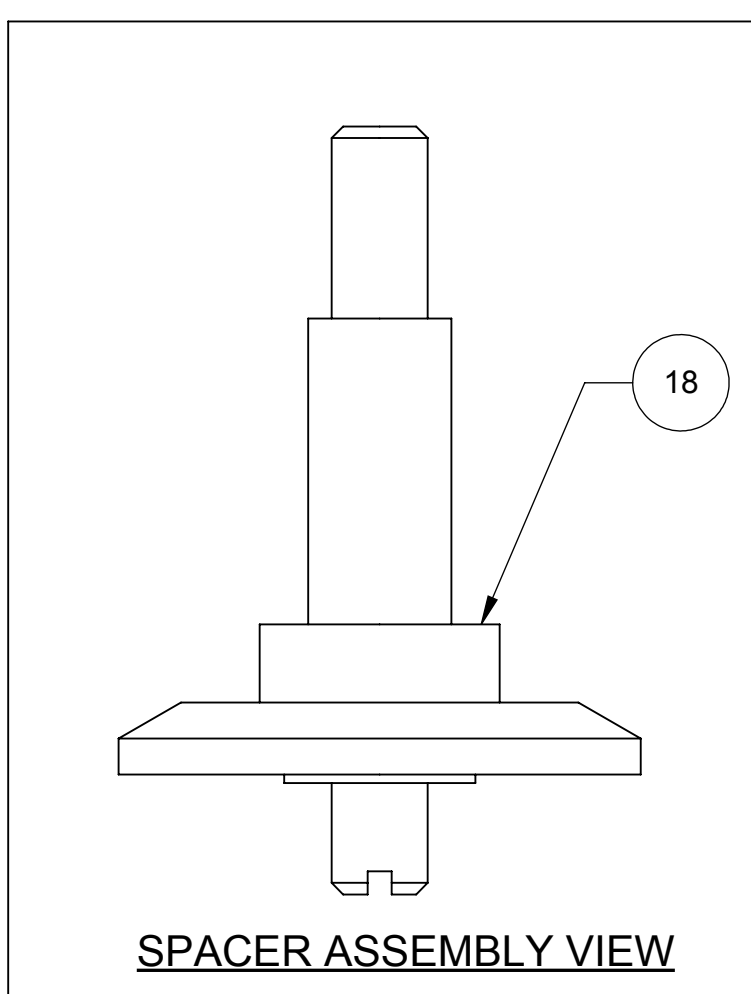
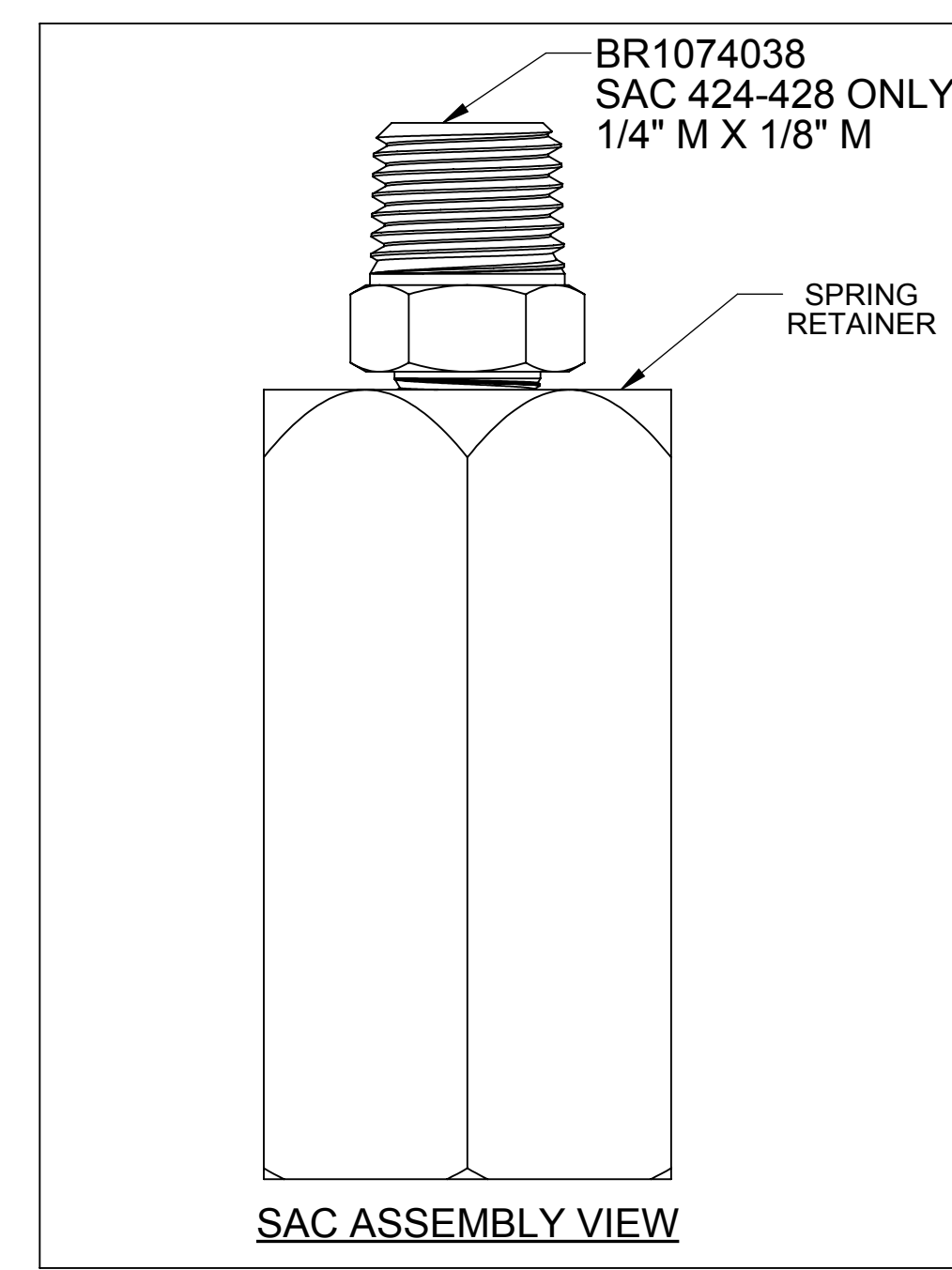
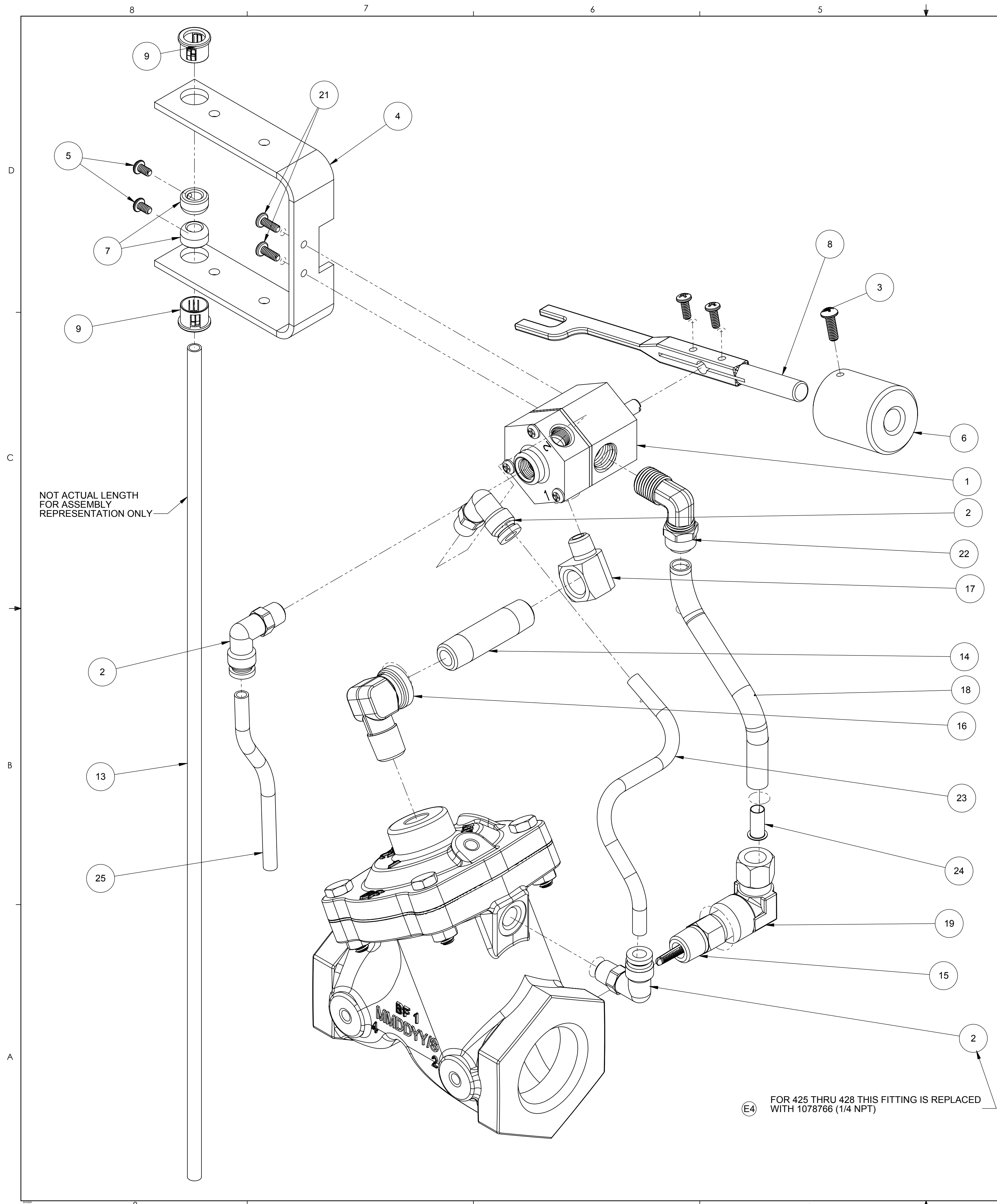


**BR1078190-426**



**424 - 428 STANDARD VERSIONS SHOWN**

<small>THIS DOCUMENT IS SOLELY THE PROPERTY OF AQ Matic VALVE &amp; CONTROLS COMPANY INC. REPRODUCTION, USE, DISCLOSURE, OR TRANSMISSION OF THIS DOCUMENT OR DETAILS CONTAINED HEREIN, IN PART OR IN WHOLE, IS PROHIBITED WITHOUT THE WRITTEN CONSENT OF AQ Matic ENGINEERING. THIS DOCUMENT AND ANY COPIES SHALL BE RETURNED TO AQ Matic UPON REQUEST.</small>		<small>COMPONENTS / ASSEMBLIES TO BE COMPLIANT AND COMPATIBLE WITH EUROPEAN UNION DIRECTIVE 2011/65/EC (ROHS2) &amp; REGULATION (EC) 1907/2006 (REACH) REQUIREMENTS</small>	
THIRD ANGLE PROJECTION		APPROVALS	DATE
DRAWN	SM	04/18/11	
APPROVED			
CHECKED			
<small>DO NOT SCALE DRAWING DIMS ARE IN INCHES (mm) INTERPRET DIMS AND TOLERANCES PER ASME Y14.5M-2009 UNLESS OTHERWISE SPECIFIED. ALL FINISHED MACHINED SURFACES 125 / OR BETTER. TOLERANCES: ANGLES: ± 1° 1 PLACE X: ± 0.15 (0.38) 2 PLACE XX: ± 0.1 (0.3) 3 PLACE XXX: ± 0.05 (0.13)</small>		<b>AQ Matic</b> Valve & Controls Company Inc.	TITLE <b>CATALOG SHEET, 420 DAIPHAGM FLOAT OPERATED VALVES</b>
SIZE	<b>B</b>	DWG NO.	<b>1078190</b>
SCALE	1:1	REV	<b>K</b>
		SHEET 4 OF 7	



REVISIONS					
ZONE	ECN	REV.	DESCRIPTION	DATE	APPD
			SEE SHEET ONE FOR NOTES		

ITEM NO.	DESCRIPTION	PART NUMBER	QTY. (424-428) POWERED OPEN
1	PILOT CNTL ASSY, 348, -AE	1073992	1
2	FITTING, ELBOW, TUBE, 1/8MNPT X	1078765	3
3	RD. HD. MACH SCREW, (8-32 X 1/2)	1072375	1
4	BRACKET, 348, CENTERING COLLAR, BRASS	1074012	1
5	RD. HD. MACH. SCREW, (6-32 X 1/4)	1072370	2
6	COUNTERWEIGHT, STD	1074014	1
8	LEVER, 348	1074034	1
9	BUSHING,	1074016	2
10	STUD, THRD, #12-24 UNC-2A, BRASS	1074025	1
11	GREASE, LUBRIPLATE, FGL-2	16856-8	1
12	FLOAT, SAND, 5"	1073996	1
13	FLOAT ROD,	1074023	1
14	FITTING, NIPPLE 1/4NPTX2, BRASS	424 1071905	1
	PIPE NIPPLE 1/4" X 3"	425, 426 1071906	
	PIPE NIPPLE 1/4" X 4"	427, 428 1071907	
15	STRAINER ASSY	1074004	1
16	FITTING, ELBOW, 1/4 MNPT X 1/4F	1074041	1
17	FITTING, ELBOW, REDUCER, BRS	1074040	1
18	STRAINER,	BR1074002	1
19	FITTING, ELBOW, TUBE 1/4FNPTX3/	1074007	1
		424 1074230	1
		425 1074305	
		426 1074385	
		427 1074484	
428 1074565			
21	SCREW, PHLP, PN HD	1072371	4
22	FITTING, ELBOW, BRASS	1074037	1
23	TUBING, POLY 1/4" O.D. X .035	1071936	1
24	FITTING, INSERT, 3/8	10332	1
25	TUBING, POLY 1/4" O.D. X .035	1071936	1

SEE NOTE-2

PAINT OPTIONS	
PART #	COLOR
42805	RED
43198	BLUE
42807	BLACK
42808	ASH

- NOTES:
1. DRILL AND TAP PORT #1 WITH 1/4" NPT. [424-428 VALVES]
  2. SEE DRAWING 1078193 FOR ROD LENGTH / MATERIAL OPTIONS.
  3. POWERED OPEN 424 MODEL SHOWN.

POWERED OPEN VERSION  
FOR 424 THRU 428  
VALVES W/FLOAT

COMPONENTS / ASSEMBLIES TO BE COMPLIANT AND COMPATIBLE WITH EUROPEAN UNION DIRECTIVE 2011/65/EC (RoHS) & REGULATION (EU) 2017/2006 (REACH) REQUIREMENTS

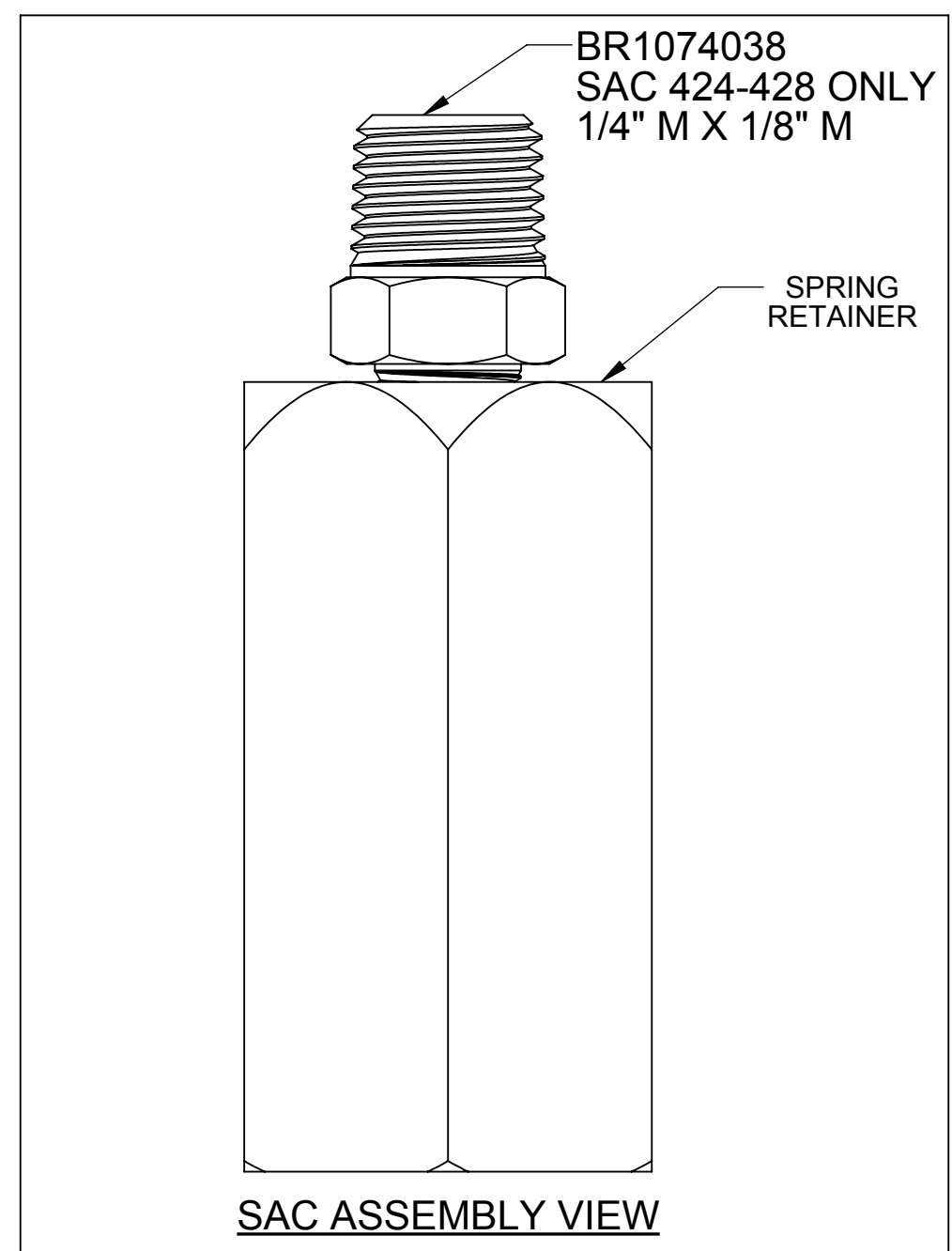
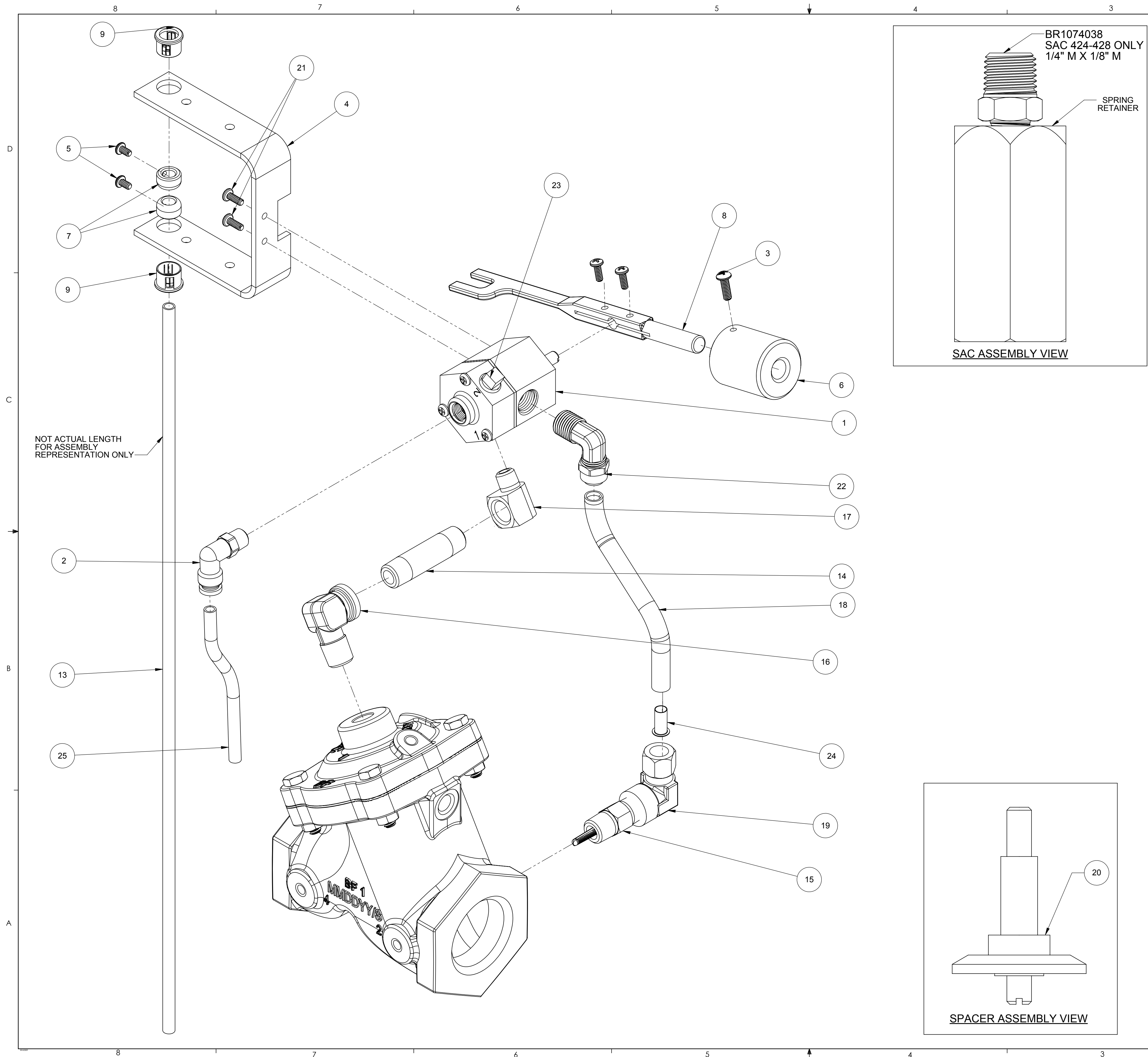
THIS DOCUMENT IS SOLELY THE PROPERTY OF AQ Matic VALVE & CONTROLS COMPANY INC. REPRODUCTION, USE, DISCLOSURE, OR TRANSMISSION OF THIS DOCUMENT OR DETAILS CONTAINED HEREIN, IN PART OR IN WHOLE, IS PROHIBITED WITHOUT THE WRITTEN CONSENT OF AQ Matic ENGINEERING. THIS DOCUMENT AND ANY COPIES SHALL BE RETURNED TO AQ Matic UPON REQUEST.

DO NOT SCALE DRAWING DIMS ARE IN INCHES (mm) INTERPRET DIMS AND TOLERANCES PER ASME Y14.5M-2009 UNLESS OTHERWISE SPECIFIED. ALL FINISHED MACHINED SURFACES 125 / OR BETTER. TOLERANCES:  
ANGLES: ± 1°  
1 PLACE .X ± .015 (0.38)  
2 PLACE .XX ± .01 (0.3)  
3 PLACE .XXX ± .005 (0.13)

THIRD ANGLE PROJECTION	APPROVALS	DATE	TITLE
	SM	04/18/11	CATALOG SHEET, 420 DAIPHGRAM FLOAT OPERATED VALVES
DRAWN	APPROVED		SIZE B DWG NO. 1078190
CHECKED			SCALE 1:1 REV K

AQ Matic Valve & Controls Company Inc.

SHEET 5 OF 7



REVISIONS					
ZONE	ECN	REV.	DESCRIPTION	DATE	APPD
			SEE SHEET ONE FOR NOTES		

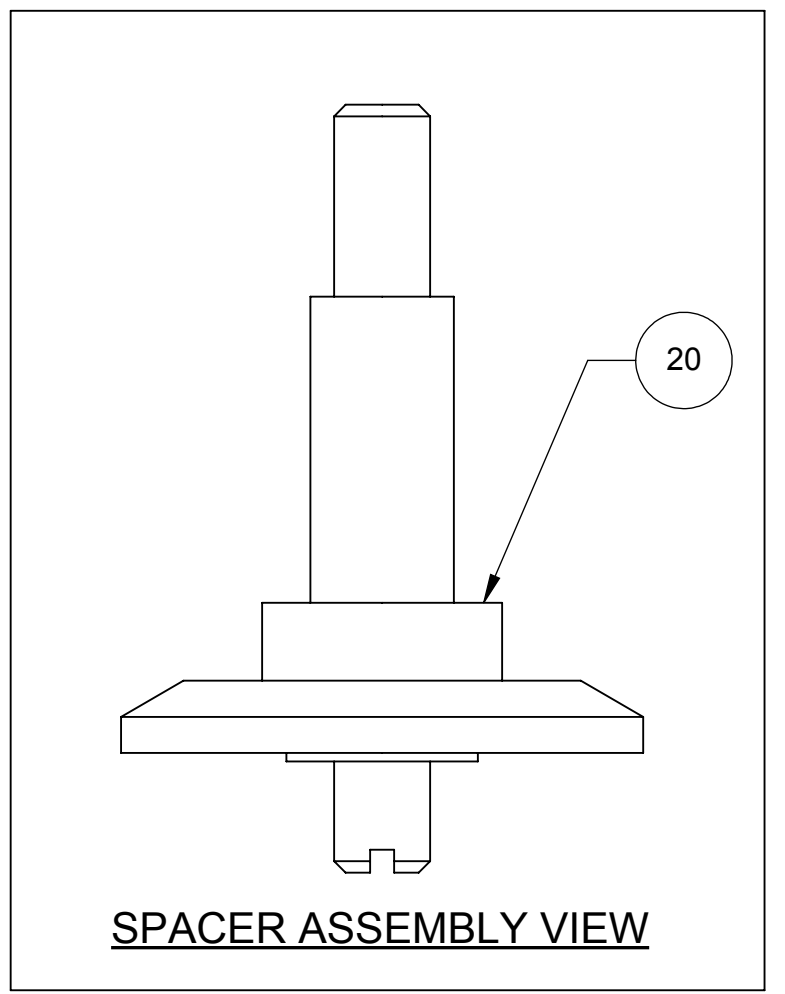
ITEM NO.	DESCRIPTION	PART NUMBER	QTY. (424-428)
1	PILOT CNTL ASSY, 348, -AE	1073992	1
2	FITTING, ELBOW, TUBE, 1/8MNPT X	1078765	1
3	RD. HD. MACH SCREW, (8-32 X 1/2)	1072375	1
4	BRACKET, 348	1074012	1
5	RD. HD. MACH. SCREW, (6-32 X 1/4)	1072370	2
6	COUNTERWEIGHT, STD	1074014	1
7	CENTERING COLLAR, BRASS	1074017	2
8	LEVER, 348	1074034	1
9	BUSHING	1074016	2
10	STUD, THRD, #12-24 UNC-2A, BRASS	1074025	1
11	GREASE, LUBRIPLATE, FGL-2	16856-8	1
12	FLOAT, SAND, 5"	1073996	1
13	FLOAT ROD	1074023	1
14	FITTING, NIPPLE, 1/4NPTX2, BRASS	424	1071905
	PIPE NIPPLE 1/4" X 3"	425, 426	1071906
	PIPE NIPPLE 1/4" X 4"	427, 428	1071907
15	STRAINER ASSY	1074004	1
16	FITTING, ELBOW, 1/4 MNPT X 1/4F	1074041	1
17	FITTING, ELBOW, REDUCER, BRS	1074040	1
18	FITTING, TUBE, .37 OD	1071940	1
19	FITTING, ELBOW, TUBE 1/4FNPTX3/	1074007	1
20	SPACER, BRASS	424	1074230
		425	1074305
		426	1074385
		427	1074484
		428	1074565
21	SCREW, PHLP, PN HD	1072371	4
22	FITTING, ELBOW, BRASS	1074037	1
23	PLUG, PIPE, 1/8" MNPT, BRS, SQ HD	1071903	1
24	FITTING, INSERT, 3/8	10332	1
25	TUBING, POLY 1/4" O.D. X .035	1071936	1

SEE NOTE-2

PAINT OPTIONS	
PART #	COLOR
42805	RED
43198	BLUE
42807	BLACK
42808	ASH

NOTES:

1. DRILL AND TAP PORT #1 WITH 1/4" NPT. [424-428 VALVES]
2. SEE DRAWING 1078193 FOR ROD LENGTH/MATERIAL OPTIONS.
3. STANDARD VERSION 424 MODEL SHOWN.



STANDARD VERSION  
FOR 424 THRU 428  
VALVES W/FLOAT

THIS DOCUMENT IS SOLELY THE PROPERTY OF AQ Matic VALVE & CONTROLS COMPANY INC. REPRODUCTION, USE, DISCLOSURE, OR TRANSMISSION OF THIS DOCUMENT OR DETAILS CONTAINED HEREIN, IN PART OR IN WHOLE, IS PROHIBITED WITHOUT THE WRITTEN CONSENT OF AQ Matic ENGINEERING. THIS DOCUMENT AND ANY COPIES SHALL BE RETURNED TO AQ Matic UPON REQUEST.

COMPONENTS / ASSEMBLIES TO BE COMPLIANT AND COMPATIBLE WITH EUROPEAN UNION DIRECTIVE 2011/65/EC (RoHS) & REGULATION (EU) 1907/2006 (REACH) REQUIREMENTS

THIRD ANGLE PROJECTION

APPROVALS: DATE: 04/18/11

DRAWN: SM

APPROVED:

CHECKED:

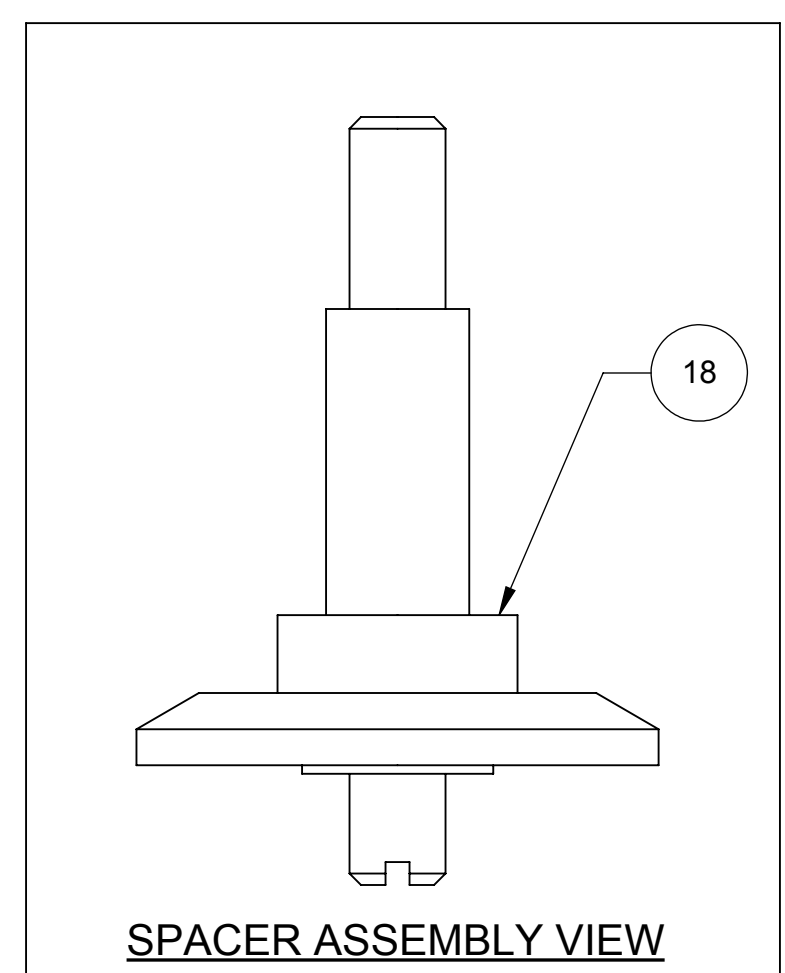
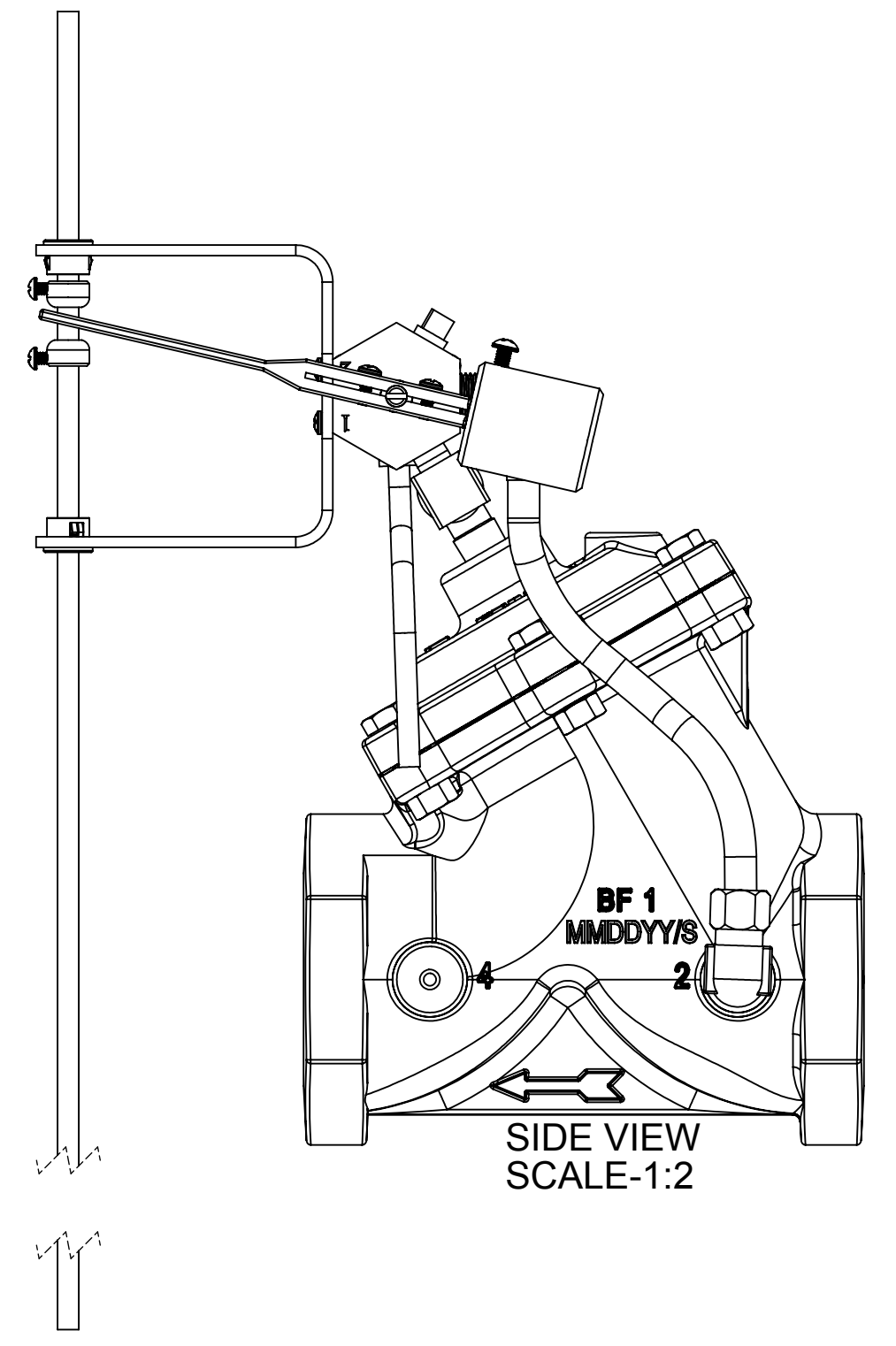
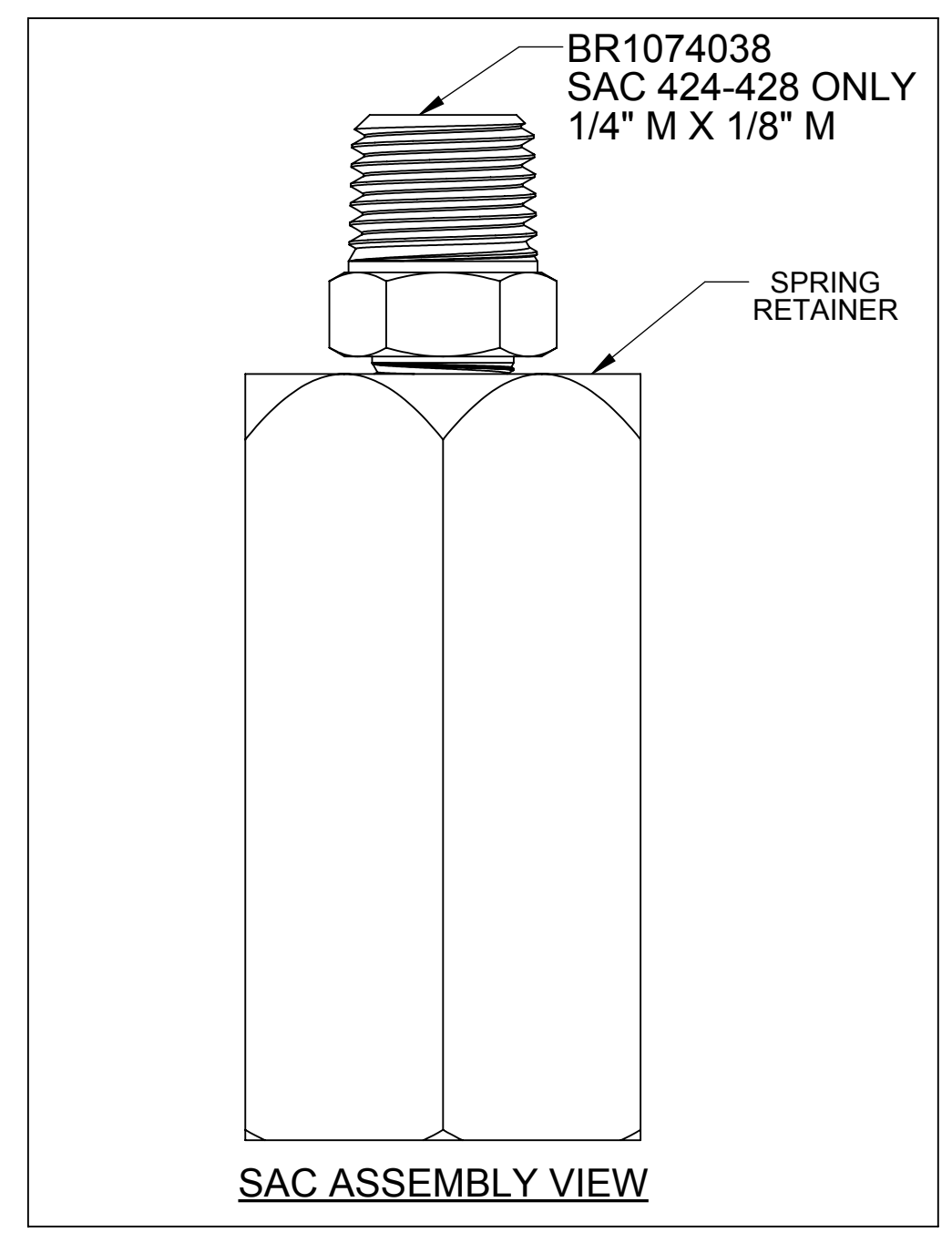
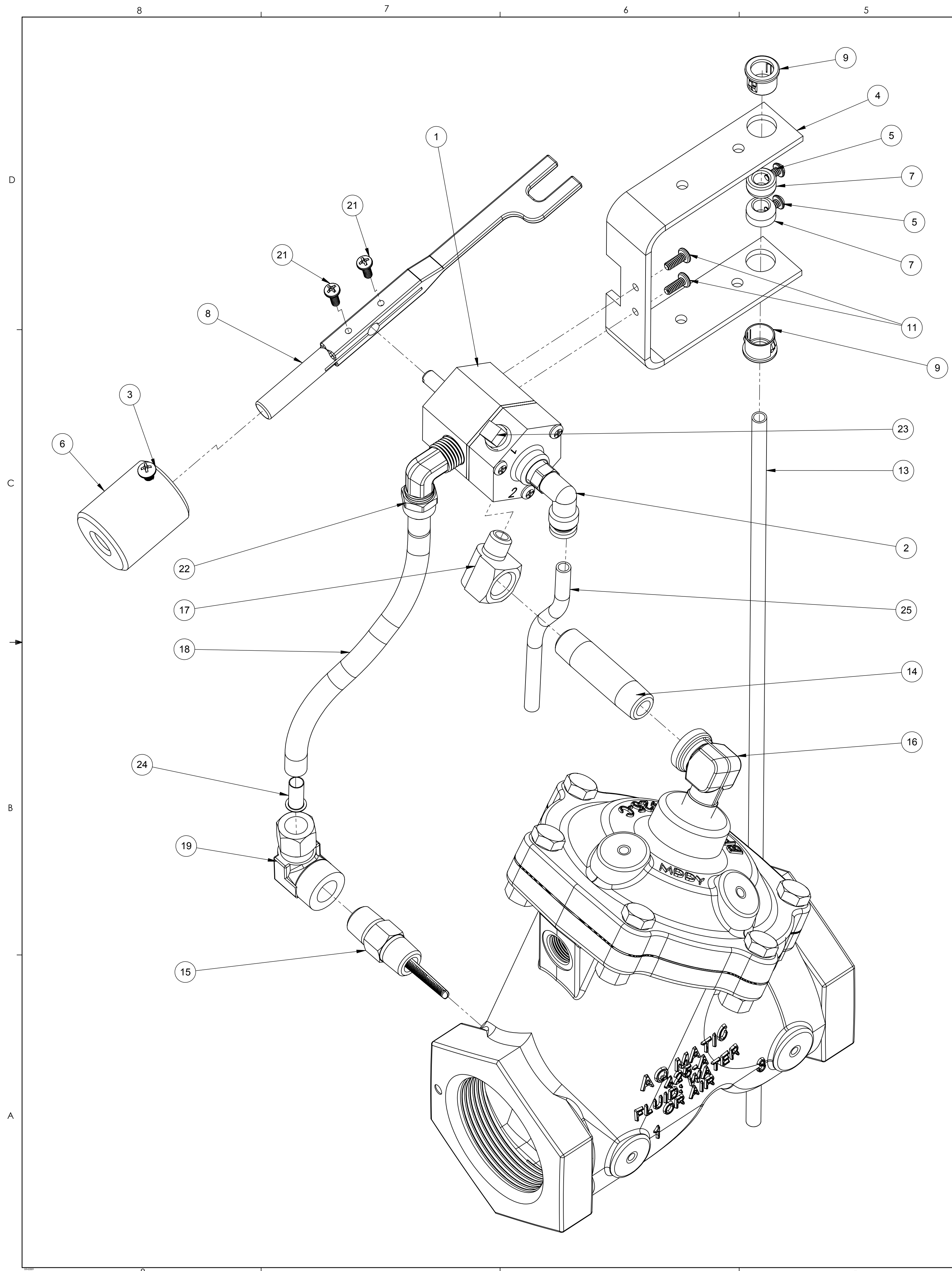
DO NOT SCALE DRAWING DIMS ARE IN INCHES (mm) INTERPRET DIMS AND TOLERANCES PER ASME Y14.5M-2009 UNLESS OTHERWISE SPECIFIED. ALL FINISHED MACHINED SURFACES 125 / OR BETTER. TOLERANCES: ANGLES: ± 1° 1 PLACE .X: ± 0.15 (0.38) 2 PLACE .XX: ± 0.1 (0.3) 3 PLACE .XXX: ± 0.05 (0.13)

TITLE: CATALOG SHEET, 420 DAIPHGRAM FLOAT OPERATED VALVES

SIZE: B DWG NO.: 1078190 REV: K

SCALE: 1:1 SHEET 6 OF 7

AQ Matic Valve & Controls Company Inc.



REVISIONS					
ZONE	ECN	REV.	DESCRIPTION	DATE	APPD
			SEE SHEET ONE FOR NOTES		

ITEM NO.	DESCRIPTION	PART NUMBER	QTY. (424-428) CLOSED IF LOW
1	PILOT CNTRL ASSY, 348, -AE	1073992	1
2	FITTING, ELBOW, TUBE, 1/8MNPT X	1078765	1
3	RD. HD. MACH SCREW, (8-32 X 1/2)	1072375	1
4	BRACKET, 348	1074012	1
5	RD. HD. MACH. SCREW, (6-32 X 1/4)	1072370	2
6	COUNTERWEIGHT, STD	1074014	1
7	CENTERING COLLAR, BRASS	1074017	2
8	LEVER, 348	1074034	1
9	BUSHING	1074016	2
10	STUD, THRD, #12-24 UNC-2A, BRASS	1074025	1
11	GREASE, LUBRIPLATE, FGL-2	16856-8	1
12	FLOAT, SAND, 5"	1073996	1
13	FLOAT ROD	1074023	1
14	FITTING, NIPPLE, 1/4NPTX2, BRASS	424	1071905
	PIPE NIPPLE 1/4" X 3"	425, 426	1071906
	PIPE NIPPLE 1/4" X 4"	427, 428	1071907
15	STRAINER ASSY	1074004	1
16	FITTING, ELBOW, 1/4 MNPT X 1/4F	1074041	1
17	FITTING, ELBOW, REDUCER, BRS	1074040	1
18	FITTING, TUBE, .37 OD	1071940	1
19	FITTING, ELBOW, TUBE 1/4FNPTX3/	1074007	1
20	SPACER, BRASS	424	1074230
		425	1074305
		426	1074385
		427	1074484
		428	1074565
21	SCREW, PHLP, PN HD	1072371	4
22	FITTING, ELBOW, BRASS	1074037	1
23	PLUG, PIPE, 1/8" MNPT, BRS, SQ HD	1071903	1
24	FITTING, INSERT, 3/8	10332	1
25	TUBING, POLY 1/4" O.D. X .035	1071936	1

NOTES:

1. DRILL AND TAP PORT #2 WITH 1/4" NPT. [424-428 VALVES]
2. SEE DRAWING 1078193 FOR ROD LENGTH/MATERIAL OPTIONS.
3. STANDARD VERSION 425 MODEL SHOWN.

PAINT OPTIONS	
PART #	COLOR
42805	RED
43198	BLUE
42807	BLACK
42808	ASH

STANDARD VERSION  
CLOSED IF- LOW,  
CLOSED BY-PILOT PRESSURE,  
OPEN BY- VENT  
**FOR 424 THRU 428  
VALVES W/FLOAT**

COMPONENTS / ASSEMBLIES TO BE COMPLIANT AND COMPATIBLE WITH EUROPEAN UNION DIRECTIVE 2011/65/EC (ROHS2) & REGULATION (EC) 1907/2006 (REACH) REQUIREMENTS

THIS DOCUMENT IS SOLELY THE PROPERTY OF AQ Matic VALVE & CONTROLS COMPANY INC. REPRODUCTION, USE, DISCLOSURE, OR TRANSMISSION OF THIS DOCUMENT OR DETAILS CONTAINED HEREIN, IN PART OR IN WHOLE, IS PROHIBITED WITHOUT THE WRITTEN CONSENT OF AQ Matic ENGINEERING. THIS DOCUMENT AND ANY COPIES SHALL BE RETURNED TO AQ Matic UPON REQUEST.

DO NOT SCALE DRAWING DIMS ARE IN INCHES (mm) INTERPRET DIMS AND TOLERANCES PER ASME Y14.5M-2009 UNLESS OTHERWISE SPECIFIED. ALL FINISHED MACHINED SURFACES 125 / OR BETTER. TOLERANCES: ANGLES: 1° 1 PLACE XX: ± 0.15 (0.38) 2 PLACE XX: ± 0.1 (0.3) 3 PLACE XXX: ± 0.05 (0.13)

THIRD ANGLE PROJECTION	APPROVALS	DATE
	SM	04/18/11
	APPROVED	
	CHECKED	

TITLE: CATALOG SHEET, 420 DAIPHAGM FLOAT OPERATED VALVES

SIZE: B DWG NO.: 1078190 REV: K

SCALE: 1:1 SHEET 7 OF 7

**AQ Matic** Valve & Controls Company Inc.