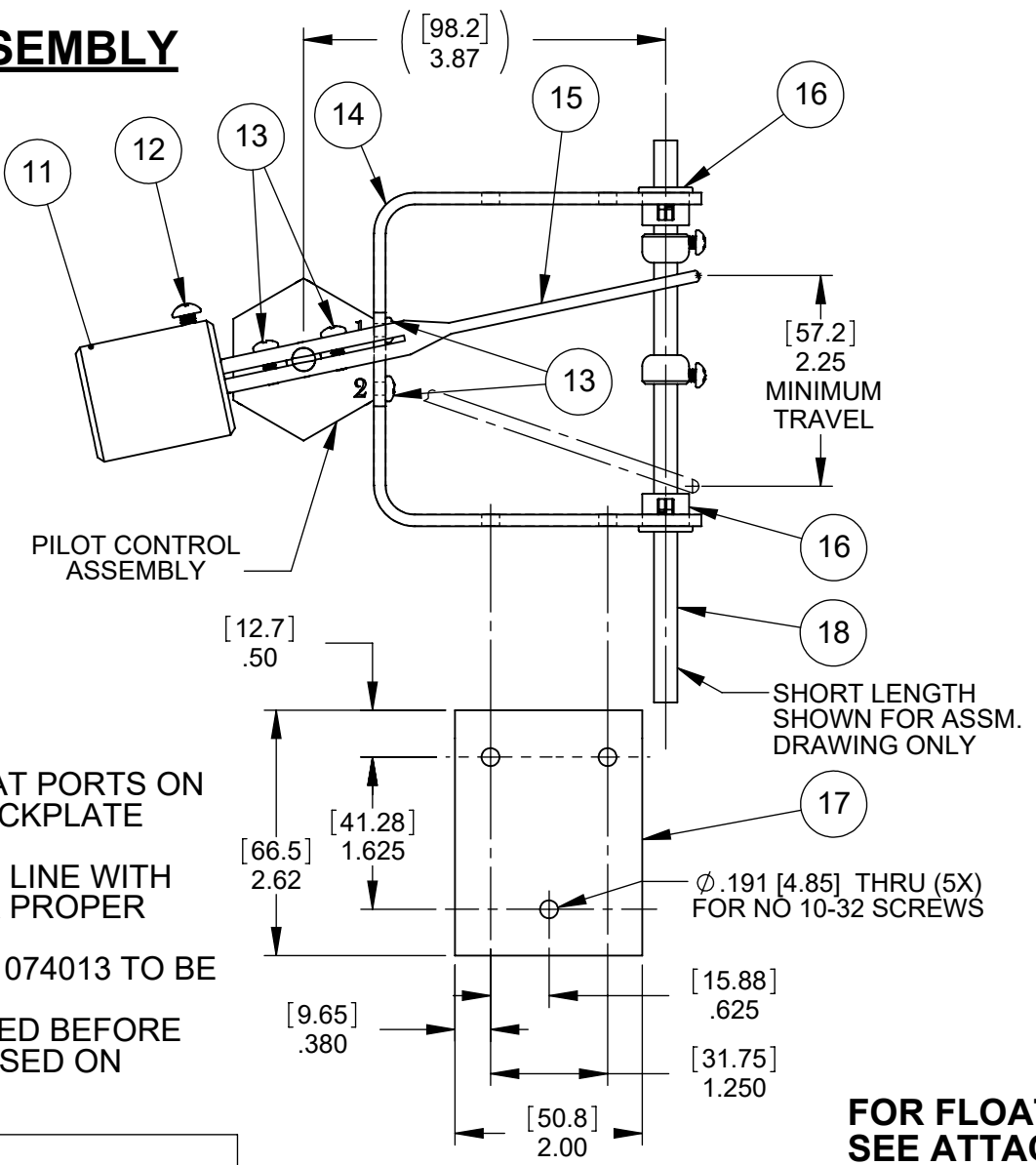
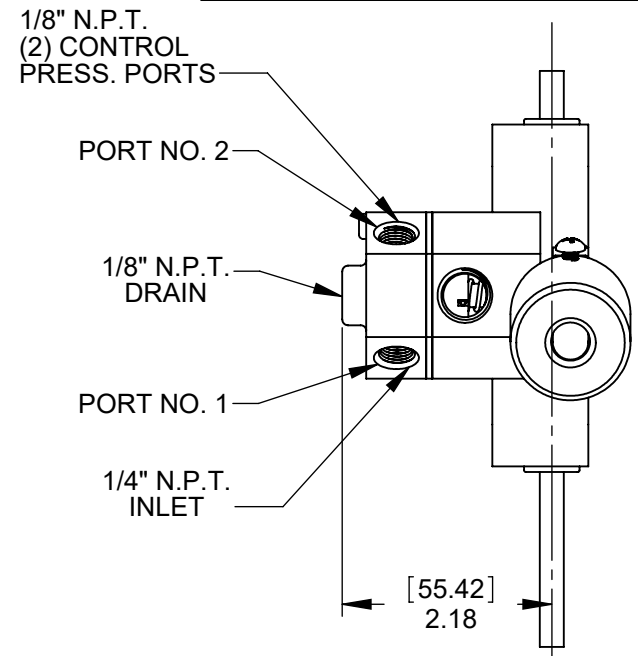


| REPAIR PARTS KITS | | |
|---|-------------------|-----------|
| DESCRIPTION | PART NO. | |
| PILOT CONTROL REPAIR PARTS INCLUDES ITEM NO. 3 THRU 9 | 1074019 (348-IAB) | |
| | PORT 1 | PORT 2 |
| FLOAT UP | PRESSURED | VENTED |
| FLOAT DOWN | VENTED | PRESSURED |

| (F1) (G1) | LEVEL CONTROL ASSEMBLY | FLOAT ROD ASSEMBLY |
|--------------|------------------------|----------------------------------|
| | 1074042 (348LC) | 1074020 (348-K) (BRASS - 36") |
| | 1074044 (348LCK) | 1074026 (348-KK) (BRASS - 54") |
| | 1074043 (348LCB) | 1074028 (348-KL) (BR WELL - 36") |
| | 1074047 (348LCX) | NO FLOAT OR ROD INCL. |

| REVISIONS | | | | | |
|-----------|--------|------|---|-----------|-------|
| ZONE | ECN | REV. | DESCRIPTION | DATE | APP'D |
| | 103972 | F | 1-REM'D: 1074046, 2-REM'D: ITEM# 18-1074030, 3-REM'D: ITEM# 18-1074027, 4-REM'D: PG-3 (OPTIONAL) 36" & 54" SS FLOAT ROD ASSY, 5-UPDATED TITLE BLOCK | 7-3-12 | TJM |
| | 104611 | G | 1-REM'D: 1074045, 2-REM'D: ITEM# 18-BR1074029, 3-REM'D: PG-3 (OPTIONAL) 36" PVC FLOAT ROD ASSY | 12MAY15 | TJM |
| | 1001 | H | AQ Matic Update & Part Number Verification | 12MAY17 | MGS |
| | 1801 | J | P/N 1074022 CHANGED TO 1074025, MINOR FORMAT CHANGES | 11/9/2020 | PMJ |

LEVEL CONTROL ASSEMBLY



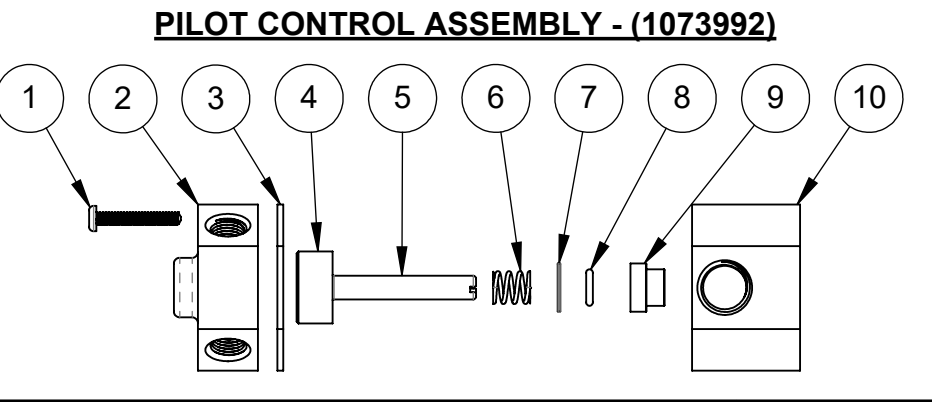
- NOTES:
1. WHEN REASSEMBLING, MAKE SURE THAT PORTS ON THE STEMPLATE (1074011) AND THE BACKPLATE (1073991) ARE ALIGNED
 2. SLOT IN THE STEMPLATE SHOULD BE IN LINE WITH SLOT IN THE LEVER ARM (1074034) FOR PROPER OPERATION.
 3. FASTENERS FOR OPTIONAL PART NO. 1074013 TO BE FURNISHED BY CUSTOMER.
 4. 2.25" [57MM] CHANGE IN LEVEL REQUIRED BEFORE PRESSURE /VENT SIGNALS ARE REVERSED ON CONTROL PORTS.

PILOT CONTROL ASSEMBLY

| ITEM NO. | PART NO. | DESCRIPTION | QTY. |
|----------|----------|------------------------------|------|
| 1 | 1075759 | SCREW, 6-32 X 7/8, PAN HEAD | 3 |
| 2 | 1073991 | BACKPLATE, 348, BRASS | 1 |
| 3 | 1084171 | GASKET, BACKPLATE, 48 STAGER | 1 |
| 4 | 1074845 | STEMPLATE, 48, ALPHA | 1 |
| 5 | 1074010 | STEMSHAFT ASSY, SERIES 348 | 1 |
| 6 | 1074822 | SPRING, COMPRESSION, 348 | 1 |
| 7 | 1074074 | WASHER, 302,SS | 1 |
| 8 | 1071667 | O-RING, 2-010 | 1 |
| 9 | 1073994 | BUSHING, SHAFT, 348 | 1 |
| 10 | 1074009 | BONNET, 348, BRASS | 1 |

LEVEL CONTROL ASSEMBLY

| ITEM NO. | PART NO. | DESCRIPTION | QTY. |
|----------|-------------|-------------------------------------|-------------------------|
| 11 | SEE SHEET 2 | COUNTERWEIGHT | 1 |
| 12 | 1072375 | RD. HD. MACH SCREW, (8-32 X 1/2) | 1 |
| 13 | 1072371 | SCREW, PHLP, PN HD, 6-32 X 3/8", SS | 4 |
| 14 | 1074012 | BRACKET, 348 | 1 |
| 15 | 1074034 | LEVER, 348 | 1 |
| 16 | 1074016 | BUSHING | 2 |
| 17 | 1074013 | MOUNTING BRACKET (OPTIONAL) | 1 |
| 18 | 1074020 | FLOAT ROD ASS'Y | BRASS (36") 1 |
| 19 | 1074026 | (SEE PAGES 2 - 3 FOR PARTS LIST) | BRASS (54") 1 |
| 20 | 1074028 | | BRASS (36" - BR WELL) 1 |
| 21 | 1239443 | | BRASS (54" - BR WELL) 1 |



FOR FLOAT ROD ASSEMBLY OPTIONS, SEE ATTACHED SHEETS

SEIRES 348 LEVEL CONTROL FLOAT OPERATED VALVE

COMPONENTS / ASSEMBLIES TO BE COMPLIANT AND COMPATIBLE WITH EUROPEAN UNION DIRECTIVE 2011/65/EEC (RoHS2) & REGULATION (EC)1907/2006 (REACH) REQUIREMENTS

THIS DOCUMENT IS SOLELY THE PROPERTY OF AQ Matic VALVE & CONTROLS COMPANY INC. REPRODUCTION, USE DISCLOSURE, OR TRANSMISSION OF THIS DOCUMENT OR DETAILS CONTAINED HEREIN, IN PART OR IN WHOLE, IS PROHIBITED WITHOUT THE WRITTEN CONSENT OF AQ Matic ENGINEERING. THIS DOCUMENT AND ANY COPIES SHALL BE RETURNED TO AQ Matic UPON REQUEST.

DO NOT SCALE DRAWING. DIMS. ARE IN INCHES [mm] INTERPRET DIMS AND TOLERANCES PER ASME Y14.5M -2009 UNLESS OTHERWISE SPECIFIED: ALL FINISHED MACHINED SURFACES 125 ✓ OR BETTER. TOLERANCES:
 ANGLES: ± 1°
 1 PLACE .X: ± .015 [0.38]
 2 PLACE .XX: ± .01 [0.3]
 3 PLACE .XXX: ± .005 [0.13]

THIRD ANGLE PROJECTION

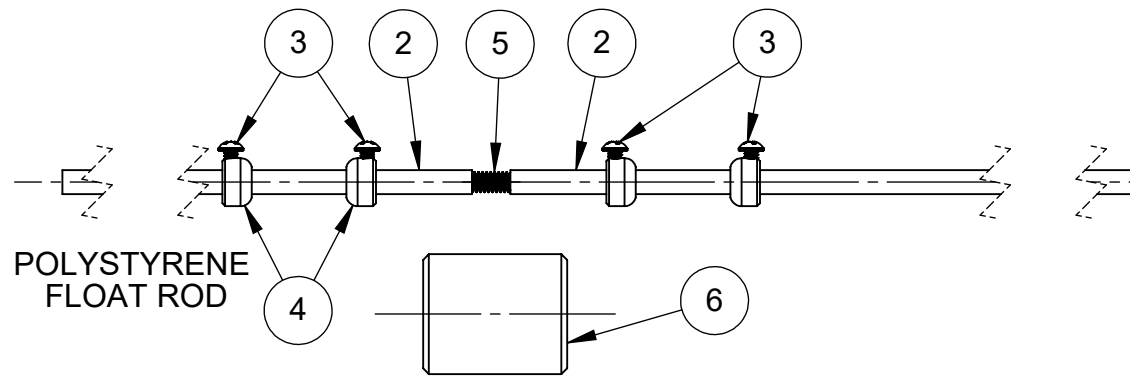
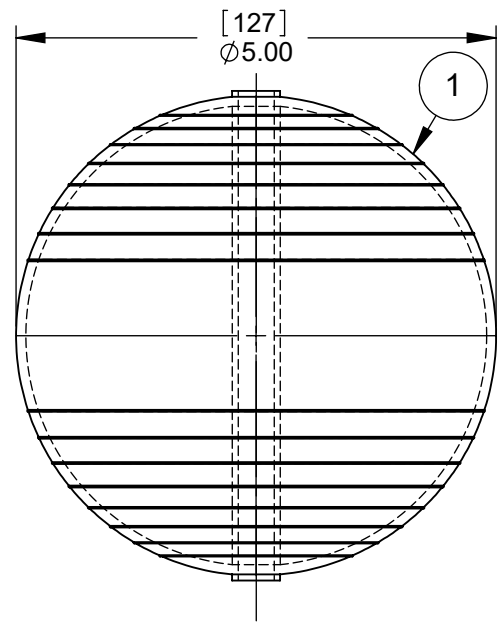
| | |
|-----------|----------|
| APPROVALS | DATE |
| DRAWN NE | 07-02-12 |
| APPROVED | |
| CHECKED | |

AQ Matic Valve & Controls Company Inc.

TITLE: **FLOAT OPERATED LEVEL CONTROL, V420 FLOAT ROD ASSEMBLIES**

SIZE **B** DWG NO. **1078193** REV **J**

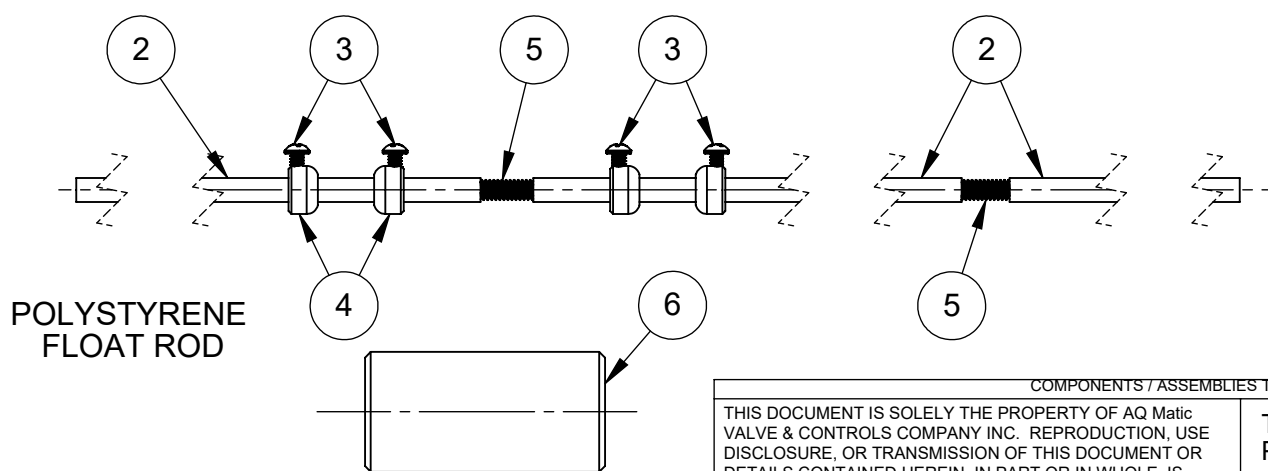
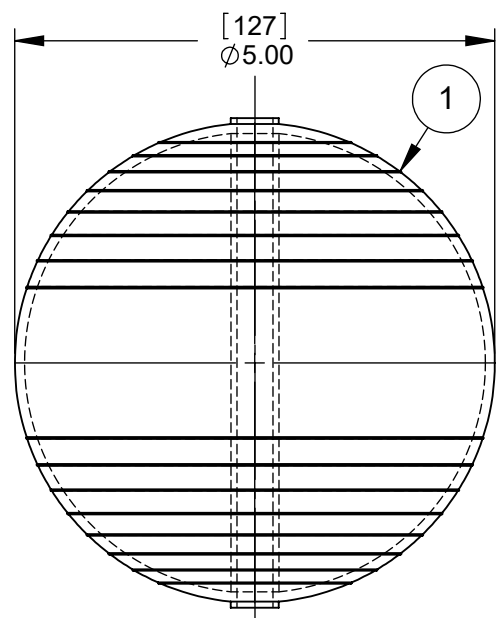
SCALE 1:2 SHEET 1 OF 3



**36" (914 MM) FLOAT ROD ASSEMBLY -
STANDARD LENGTH (1074020)**

**SERIES 420 DIAPHRAGM VALVES
FLOAT ROD ASSEMBLIES**

**54" (1372 MM) FLOAT ROD ASSEMBLY -
STANDARD LENGTH (1074020)**



| REVISIONS | | | | | |
|----------------------------------|-----|------|-------------|------|-------|
| ZONE | ECN | REV. | DESCRIPTION | DATE | APP'D |
| SEE SHEET 1 FOR LIST OF CHANGES. | | | | | |
| | | | | | |
| | | | | | |
| | | | | | |
| | | | | | |

STANDARD 36" FLOAT ROD ASSEMBLY 1074020

| ITEM NO. | PART NO. | DESCRIPTION | QTY. |
|----------|----------|-----------------------------------|------|
| 1 | 1073996 | FLOAT, SAND, 5" | 1 |
| 2 | 1074023 | TUBE, FLOAT ROD, BRASS 18" LG | 2 |
| 3 | 1072370 | RD. HD. MACH. SCREW, (6-32 X 1/4) | 4 |
| 4 | 1074017 | CENTERING COLLAR, BRASS | 4 |
| 5 | 1074025 | STUD, THRD, #12-24 UNC-2A, SS | 1 |
| 6 | 1074014 | COUNTERWEIGHT, STD | 1 |

(G3)

OPTIONAL 54" FLOAT ROD ASSEMBLY 1074026

| ITEM NO. | PART NO. | DESCRIPTION | QTY. |
|----------|----------|-----------------------------------|------|
| 1 | 1073996 | FLOAT, SAND, 5" | 1 |
| 2 | 1074023 | TUBE, FLOAT ROD, BRASS 18" LG | 3 |
| 3 | 1072370 | RD. HD. MACH. SCREW, (6-32 X 1/4) | 4 |
| 4 | 1074017 | CENTERING COLLAR, BRASS | 4 |
| 5 | 1074025 | STUD, THRD, #12-24 UNC-2A, SS | 2 |
| 6 | 1074015 | COUNTERWEIGHT, SPECIAL | 1 |

COMPONENTS / ASSEMBLIES TO BE COMPLIANT AND COMPATIBLE WITH EUROPEAN UNION DIRECTIVE 2011/65/EEC (RoHS2) & REGULATION (EC)1907/2006 (REACH) REQUIREMENTS

THIS DOCUMENT IS SOLELY THE PROPERTY OF AQ Matic VALVE & CONTROLS COMPANY INC. REPRODUCTION, USE DISCLOSURE, OR TRANSMISSION OF THIS DOCUMENT OR DETAILS CONTAINED HEREIN, IN PART OR IN WHOLE, IS PROHIBITED WITHOUT THE WRITTEN CONSENT OF AQ Matic ENGINEERING. THIS DOCUMENT AND ANY COPIES SHALL BE RETURNED TO AQ Matic UPON REQUEST.

DO NOT SCALE DRAWING. DIMS. ARE IN INCHES [mm]
 INTERPRET DIMS AND TOLERANCES PER ASME Y14.5M -2009
 UNLESS OTHERWISE SPECIFIED:
 ALL FINISHED MACHINED SURFACES 125 √ OR BETTER.
 TOLERANCES:
 ANGLES: ± 1°
 1 PLACE .X: ± .015 [0.38]
 2 PLACE .XX: ± .01 [0.3]
 3 PLACE .XXX: ± .005 [0.13]

THIRD ANGLE PROJECTION

APPROVALS DATE

DRAWN NE 07-02-12

APPROVED

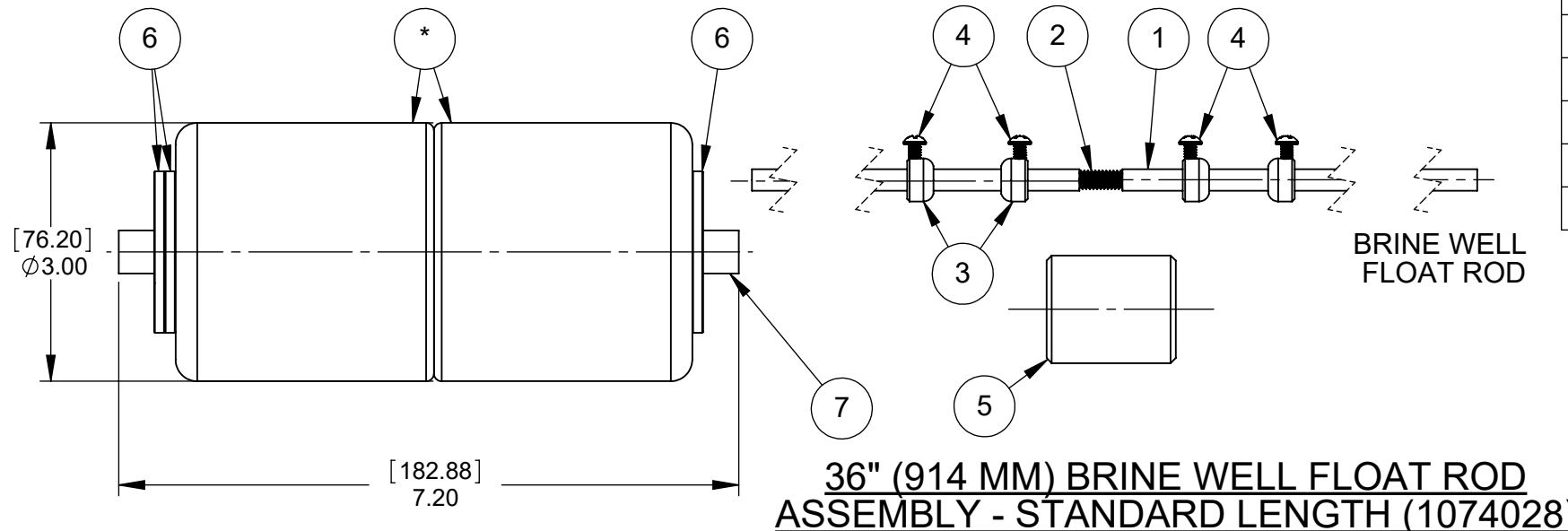
CHECKED

AQ Matic
Valve & Controls Company Inc.

TITLE
**FLOAT OPERATED LEVEL CONTROL,
V420 FLOAT ROD ASSEMBLIES**

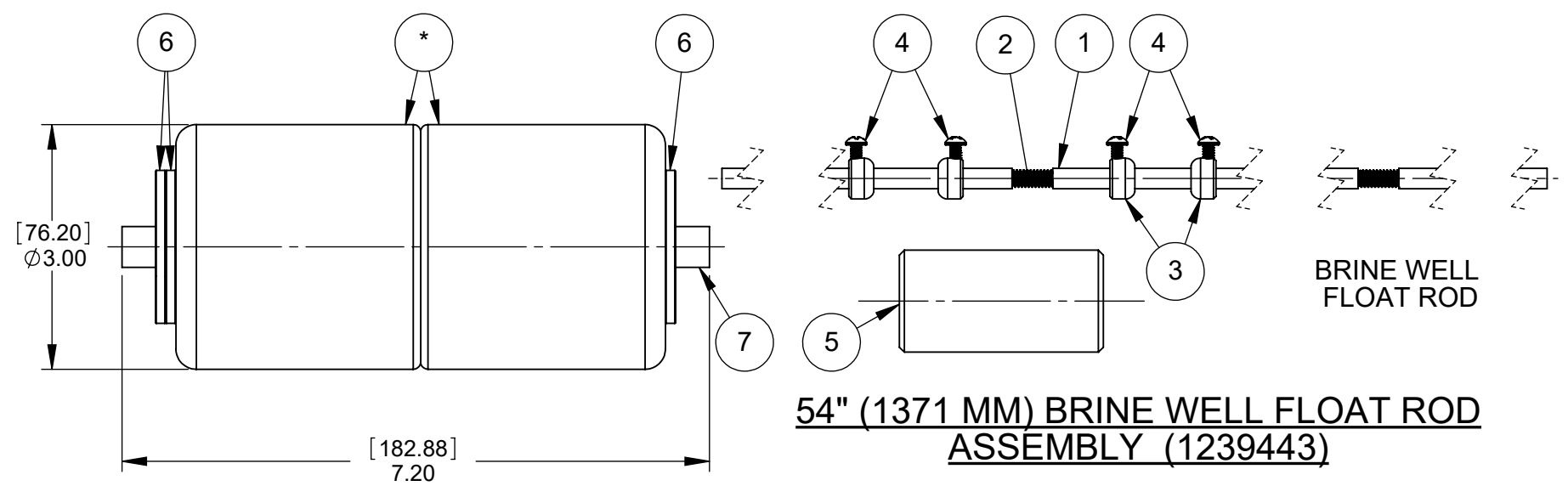
SIZE **B** DWG NO. **1078193** REV **J**

SCALE 1:2 SHEET 2 OF 3



36" (914 MM) BRINE WELL FLOAT ROD ASSEMBLY - STANDARD LENGTH (1074028)

**SERIES 420 DIAPHRAGM VALVES
FLOAT ROD ASSEMBLIES**



54" (1371 MM) BRINE WELL FLOAT ROD ASSEMBLY (1239443)

| REVISIONS | | | | | |
|-----------|-----|------|----------------------------------|------|-------|
| ZONE | ECN | REV. | DESCRIPTION | DATE | APP'D |
| | | | SEE SHEET 1 FOR LIST OF CHANGES. | | |
| | | | | | |
| | | | | | |
| | | | | | |

**OPTIONAL 36" BRINE WELL FLOAT ROD ASSEMBLY
1074028**

| ITEM NO. | PART NO. | DESCRIPTION | QTY. |
|----------|----------|-----------------------------------|------|
| 1 | 1074023 | TUBE, FLOAT ROD, BRASS 18" LG | 2 |
| 2 | 1074025 | STUD, THRD, #12-24 UNC-2A, SS | 1 |
| 3 | 1074017 | CENTERING COLLAR, BRASS | 4 |
| 4 | 1072370 | RD. HD. MACH. SCREW, (6-32 X 1/4) | 4 |
| 5 | 1074014 | COUNTERWEIGHT, STD | 1 |
| 6 | 1074032 | WEIGHT, FLOAT, BRASS | 3 |
| 7 | 1074036 | TUBE, .50, BRASS | 1 |

**OPTIONAL 54" BRINE WELL FLOAT ROD ASSEMBLY
1239443**

| ITEM NO. | PART NO. | DESCRIPTION | QTY. |
|----------|----------|-----------------------------------|------|
| 1 | 1074023 | TUBE, FLOAT ROD, BRASS 18" LG | 3 |
| 2 | 1074025 | STUD, THRD, #12-24 UNC-2A, SS | 2 |
| 3 | 1074017 | CENTERING COLLAR, BRASS | 4 |
| 4 | 1072370 | RD. HD. MACH. SCREW, (6-32 X 1/4) | 4 |
| 5 | 1074015 | COUNTERWEIGHT, SPECIAL | 1 |
| 6 | 1074032 | WEIGHT, FLOAT, BRASS | 3 |
| 7 | 1074036 | TUBE, .50, BRASS | 1 |

COMPONENTS / ASSEMBLIES TO BE COMPLIANT AND COMPATIBLE WITH EUROPEAN UNION DIRECTIVE 2011/65/EEC (RoHS2) & REGULATION (EC)1907/2006 (REACH) REQUIREMENTS

| | | | | |
|--|---|--|--|---|
| <p>THIS DOCUMENT IS SOLELY THE PROPERTY OF AQ Matic VALVE & CONTROLS COMPANY INC. REPRODUCTION, USE DISCLOSURE, OR TRANSMISSION OF THIS DOCUMENT OR DETAILS CONTAINED HEREIN, IN PART OR IN WHOLE, IS PROHIBITED WITHOUT THE WRITTEN CONSENT OF AQ Matic ENGINEERING. THIS DOCUMENT AND ANY COPIES SHALL BE RETURNED TO AQ Matic UPON REQUEST.</p> <p>DO NOT SCALE DRAWING. DIMS. ARE IN INCHES [mm] INTERPRET DIMS AND TOLERANCES PER ASME Y14.5M -2009 UNLESS OTHERWISE SPECIFIED: ALL FINISHED MACHINED SURFACES 125 ✓ OR BETTER. TOLERANCES: ANGLES: ± 1° 1 PLACE .X: ± .015 [0.38] 2 PLACE .XX: ± .01 [0.3] 3 PLACE .XXX: ± .005 [0.13]</p> | <p>THIRD ANGLE PROJECTION</p> | AQ Matic Valve & Controls Company Inc. | | |
| | <p>APPROVALS</p> <p>DRAWN NE</p> <p>APPROVED</p> <p>CHECKED</p> | <p>DATE</p> <p>07-02-12</p> | <p>TITLE</p> <p>FLOAT OPERATED LEVEL CONTROL, V420 FLOAT ROD ASSEMBLIES</p> | |
| | | | <p>SIZE B</p> <p>SCALE 1:2</p> | <p>DWG NO. 1078193</p> <p>REV J</p> |
| | | | | <p>SHEET 3 OF 3</p> |