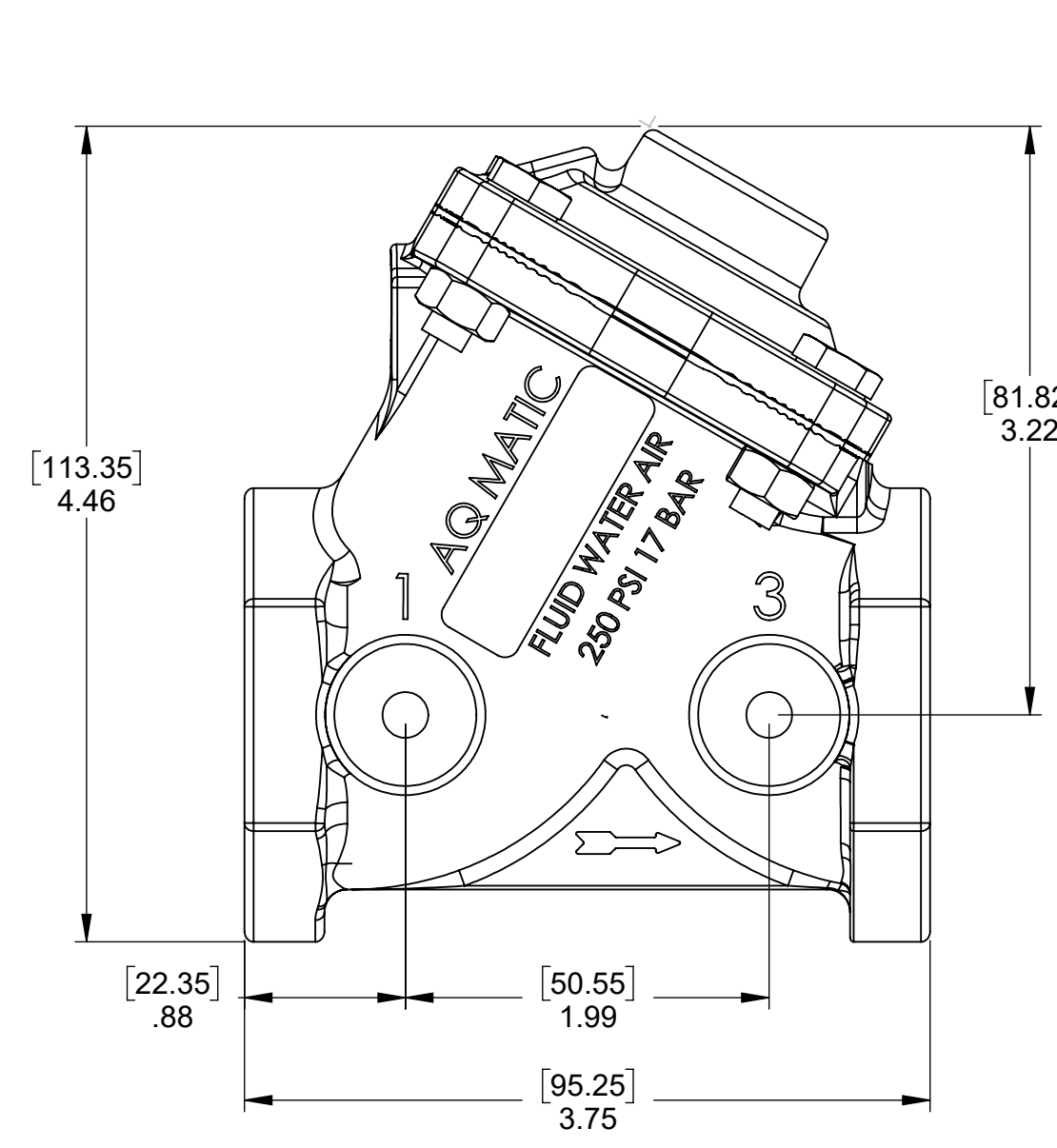
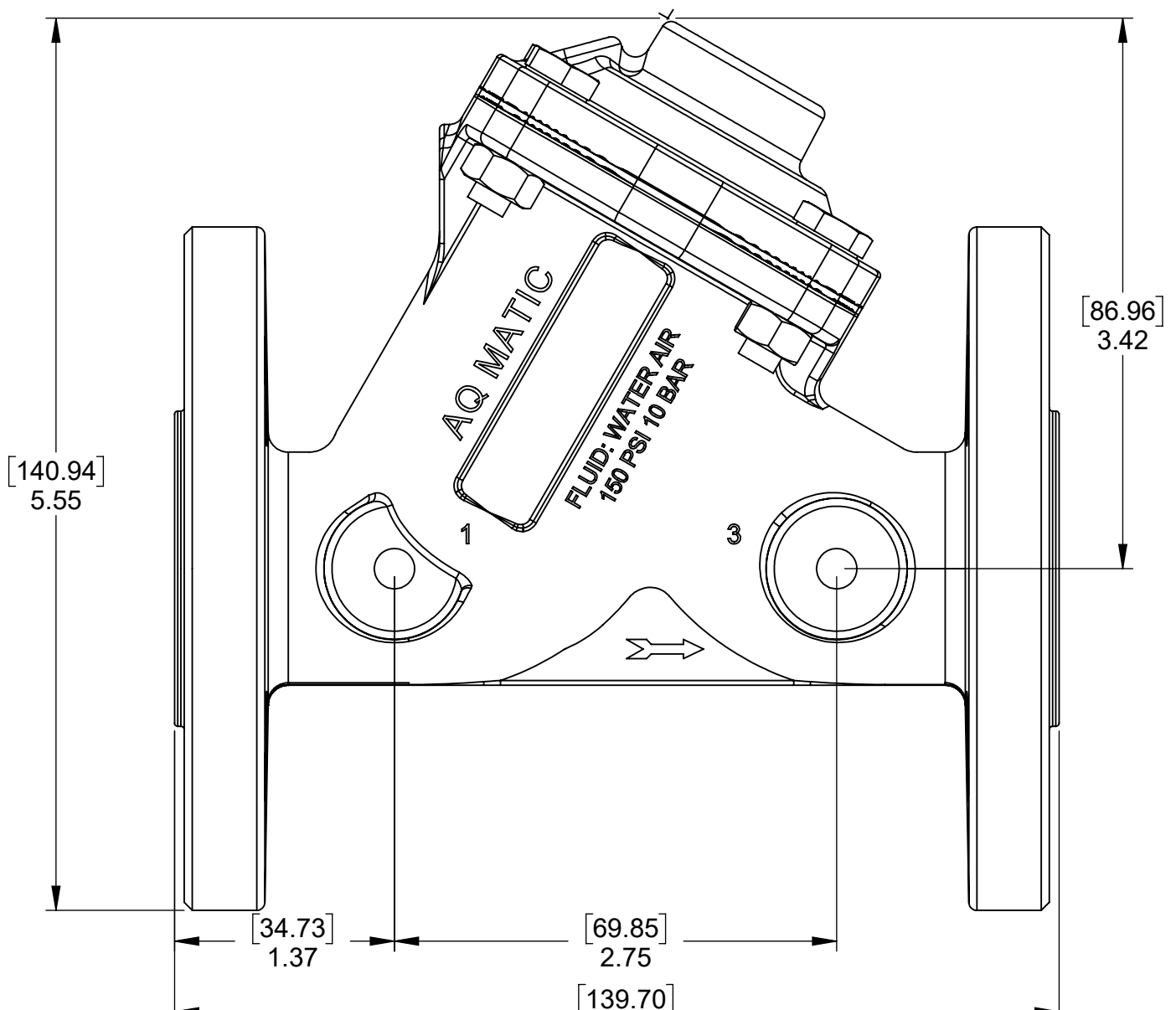


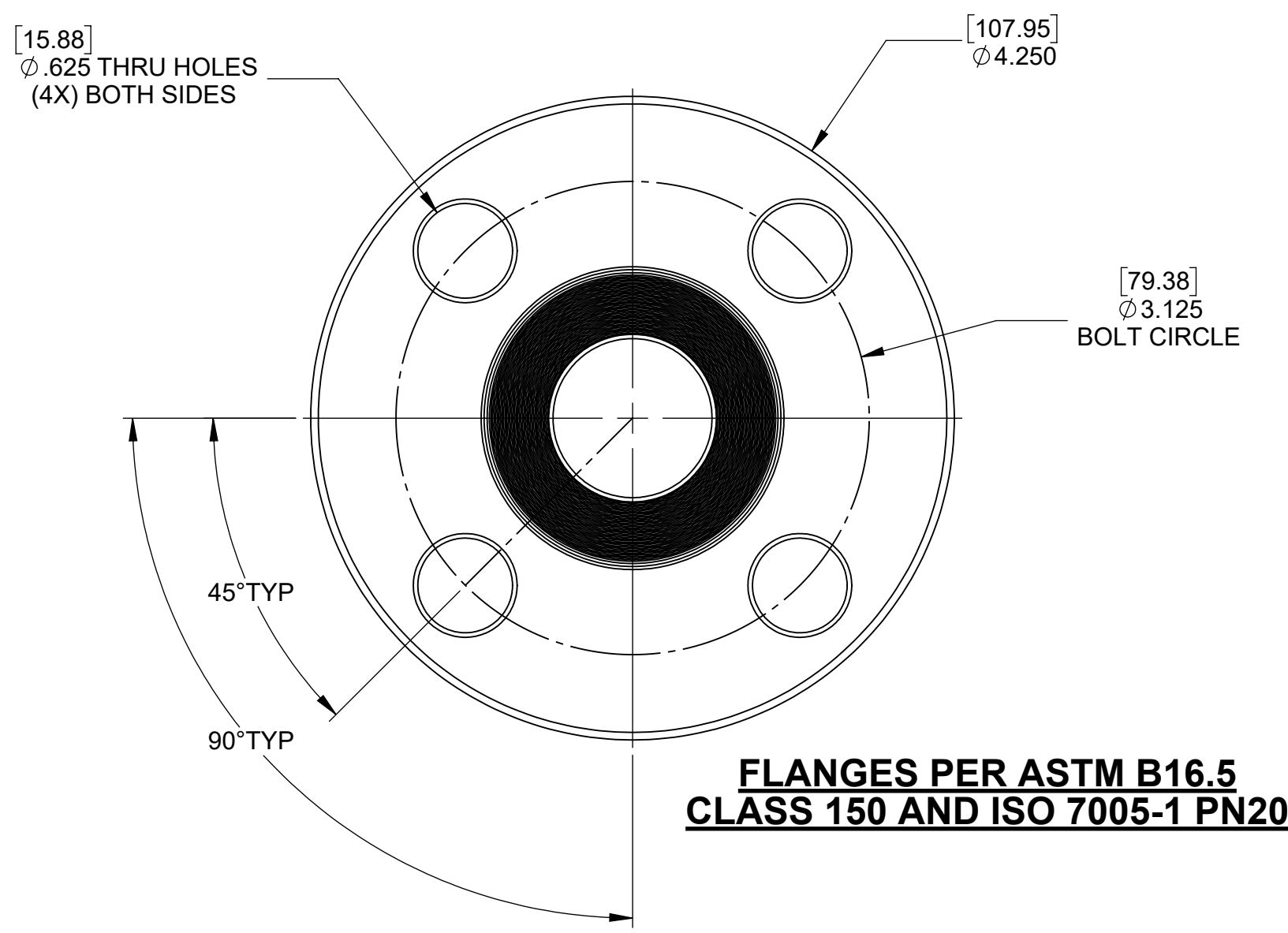
REVISIONS				
ECN	REV.	DESCRIPTION	DATE	APP'D
1960	K	UPDATED CATALOG SHEET	8/6/21	TRK
2009	L	REMOVE ITEM# 4 FROM REPAIR AND CONVERSION KITS	2/14/22	TRK
1969	M	PART TO PRINT INTEGRITY	5/23/22	TRK
2100	N	PART TO PRINT INTEGRITY	7/13/22	TRK



MODEL: V46C-0200-03000 (THREADED)

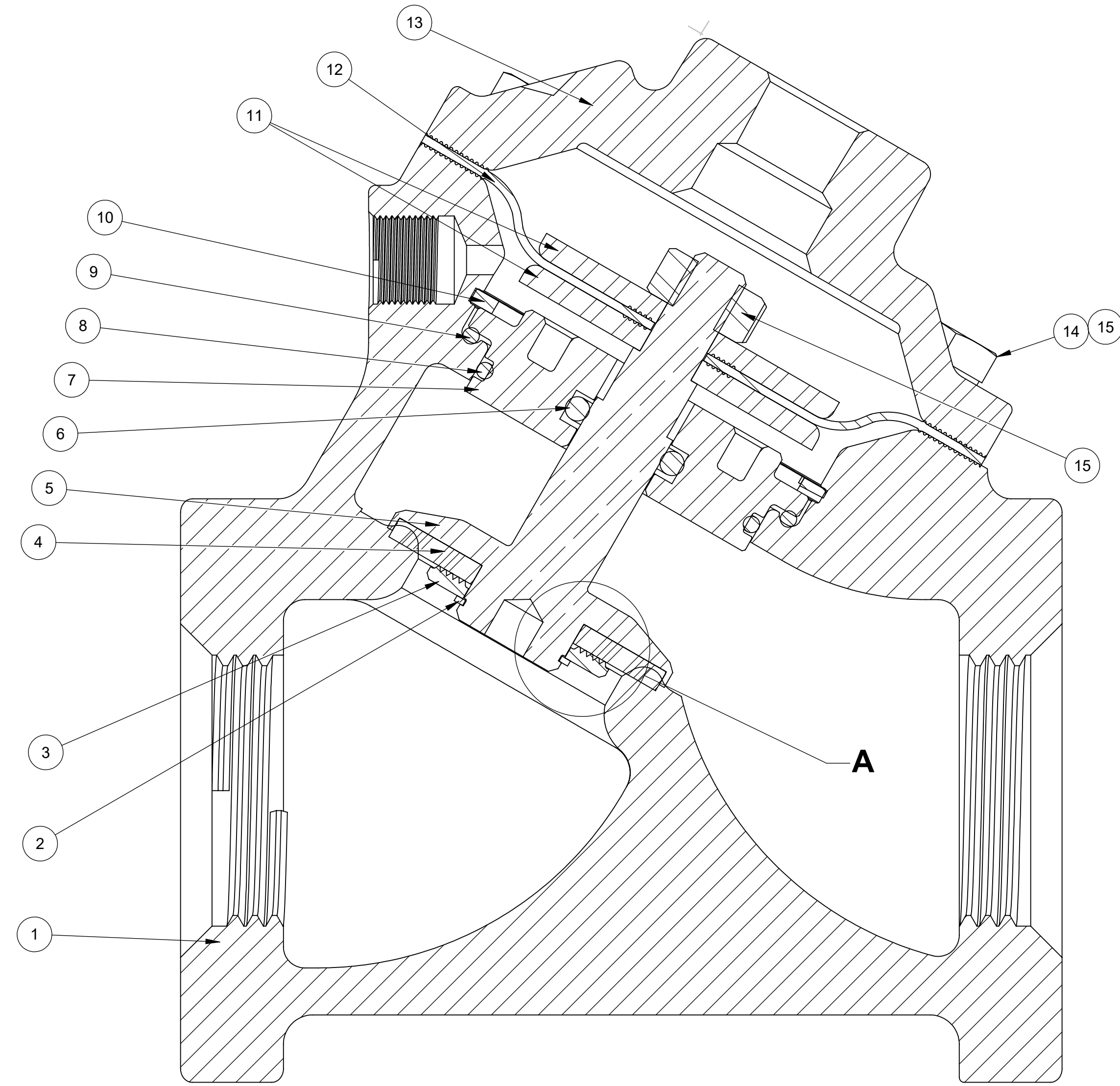


MODEL: V46C-3200-03000 (FLANGED)

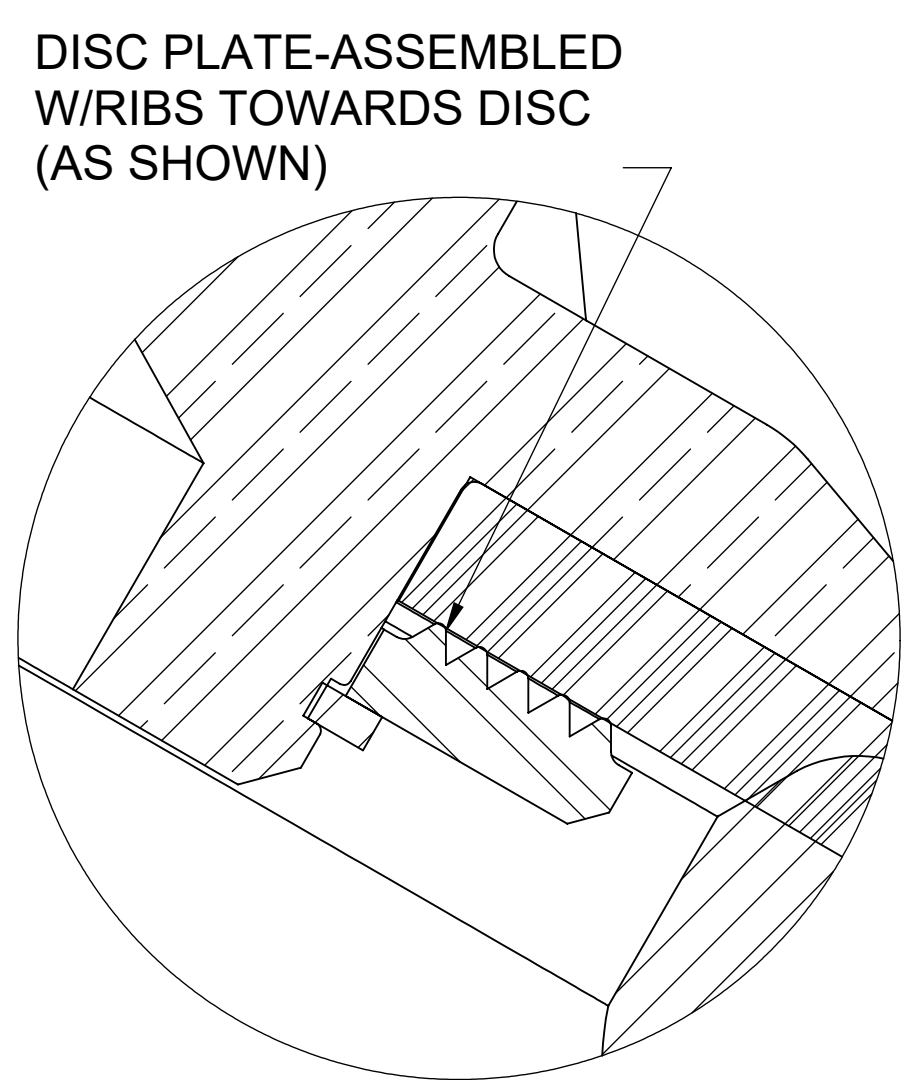
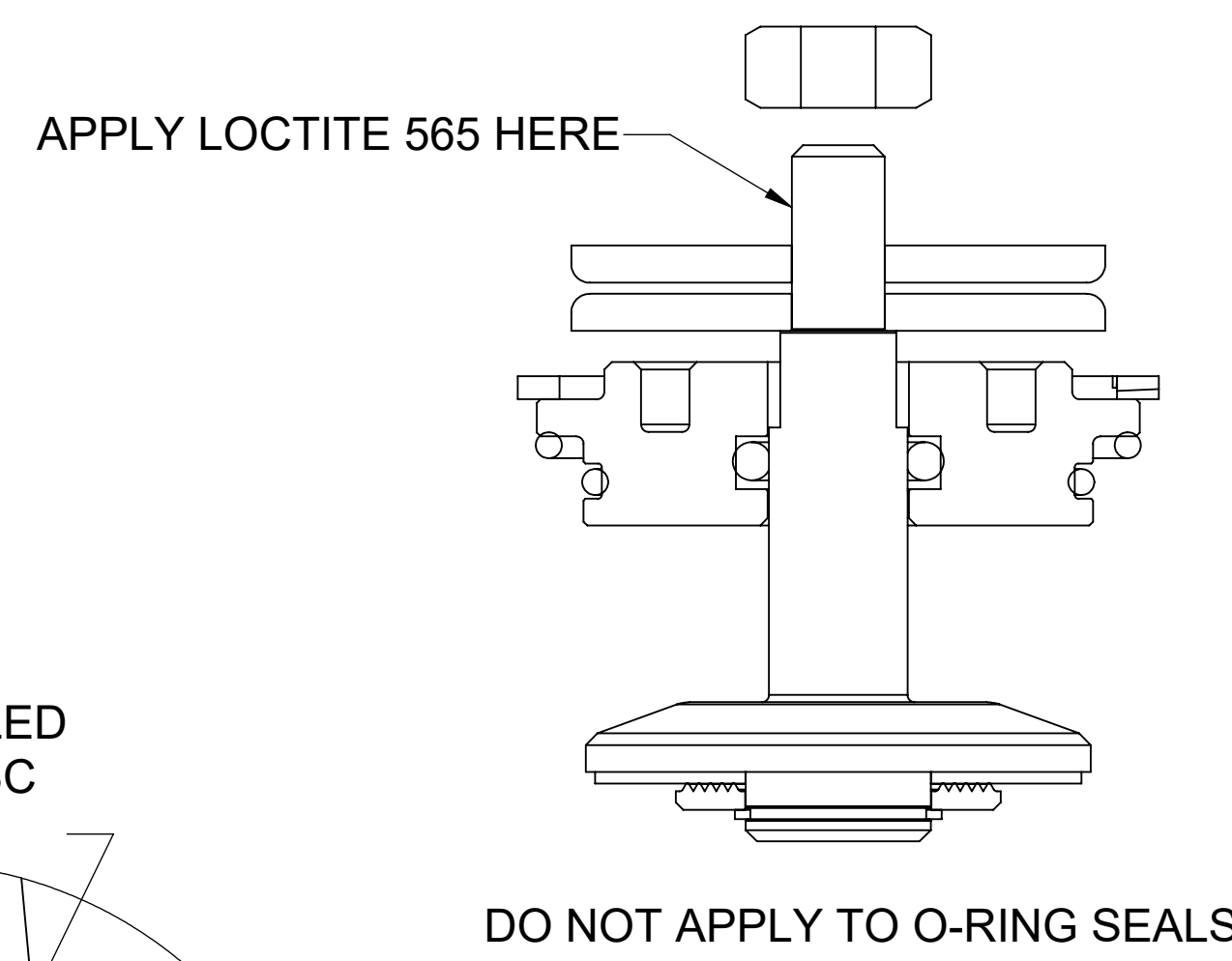


NORMALLY OPEN					
ITEM NO.	DESCRIPTION	STD	PART NUMBER	QTY.	
1	BODY, THREADED, 461	CF8M	* 1079053	1	
	BODY, FLANGED, 461, 1.00", ASTM		* 1078568		
2	RING, RETAINER, SPRIAL	316 SS	* 1078562	1	
3	PLATE, DISC, 461, 316SS, MACH	316 SS	* 1075690	1	
4	DISC	BUNA	* 1074140 (421-J)	1	
		EPDM	1074143 (421-JE)		
		FKM	1074146 (421-JV)		
5	SHAFT, 461, NO, CF8M	316 SS	* 1078584	1	
6	O-RING, 2-110	BUNA	* 1071689 (ORB-110TC)	1	
		EPDM	1071726 (ORE-110TC)		
		FKM	1239021 (ORV-110TC)		
7	GUIDE, SHAFT, 461, 316SS, MACH	316 SS	* 1078579	1	
8	O-RING, 2 - 026	BUNA	* 1079834 (ORB-026)	1	
		EPDM	1081944 (ORE-026)		
		FKM	1081946 (ORV-026)		
9	O-RING, 2 - 029	BUNA	* 1079835 (ORB-029)	1	
		EPDM	1081945 (ORE-029)		
		FKM	1081947 (ORV-029)		
10	RING, RETAINING, 1.72 X .062, 316SS	316 SS	* 1075695	1	
11	PLATE, DIAPHRAGM, 461, 316SS	316 SS	* 1075684	2	
12	DIAPHRAGM, 421	BUNA	* 1074119 (421-FB)	1	
		FKM	1074120 (421-FV)		
13	CAP, NPT TOP	CF8M	* 1078572	1	
14	SCREW, HEX, 1/4-20 X 7/8, 316SS	316 SS	* 1075692	4	
15	NUT, HEX, 1/4" - 20	316 SS	* 1075693	5	

NOTES:
1. AMERICAN NATIONAL STANDARD TAPER PIPE THREADS (NPT) PER ANSI B1.20.1.



NORMALLY OPEN (STANDARD)



DETAIL A SCALE 8 : 1

REPAIR PARTS KITS			
DESCRIPTION	PART NO.		
DIAPHRAGM & SEALS KIT CONSISTS OF ITEM NO'S 2, 4, 6, 8, 9, 10, 12, 15, 19, 26 & SILICONE PACK PART NO. 1071485	1078620	1078621	1078622
	BUNA N INCLUDES DIAPHRAGM 1074119	E.P.D.M. INCLUDES DIAPHRAGM 1074119	FKM INCLUDES DIAPHRAGM 1074120
	1078623		
INT. PARTS KIT (NORM. OPEN) CONSISTS OF STANDARD ITEM NO'S 3, 5, 7, 11(2)	1078623		

SEE SHEET 2 FOR CONFIGURATION OPTIONS

THIS DOCUMENT IS SOLELY THE PROPERTY OF AQ-MATIC REPRODUCTION, USE DISCLOSURE, OR TRANSMISSION OF THIS DOCUMENT OR DETAILS CONTAINED HEREIN, IN PART OR IN WHOLE, IS PROHIBITED WITHOUT THE WRITTEN CONSENT OF AQ-MATIC ENGINEERING. THIS DOCUMENT AND ANY COPIES SHALL BE RETURNED TO AQ-MATIC UPON WRITTEN REQUEST.

INTERPRET DIMENSIONS AND TOLERANCES PER ASME Y14.2M-1994

UNLESS OTHERWISE SPECIFIED: DIMENSIONS ARE IN INCHES (mm) CORNER FILLETS R.005-.020 (1.27-.508) TOLERANCES:

ANGLES: ± 1°

1 PLACE .XX ± .00 (2.54)

2 PLACE .XXX ± .010 (0.3)

3 PLACE .XXXX ± .005 (0.13)

THIRD ANGLE PROJECTION	
APPROVALS	DATE
DRAWN TRK	8/6/21
CHECKED BY	
APPROVED	

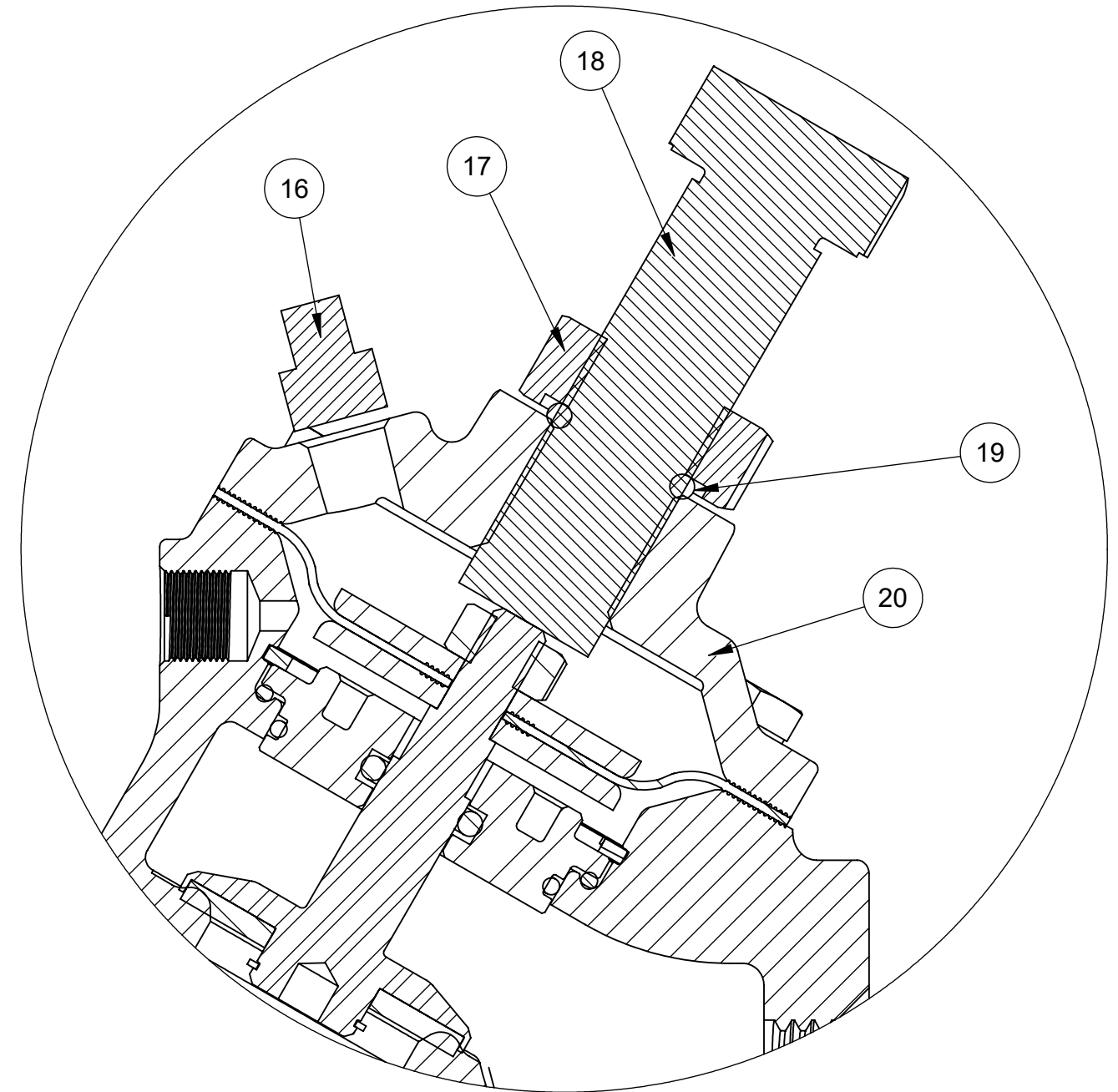
AQ-Matic AQ-MATIC VALVES AND CONTROLS

CATALOG SHEET 461, 316SS STANDARD MODELS

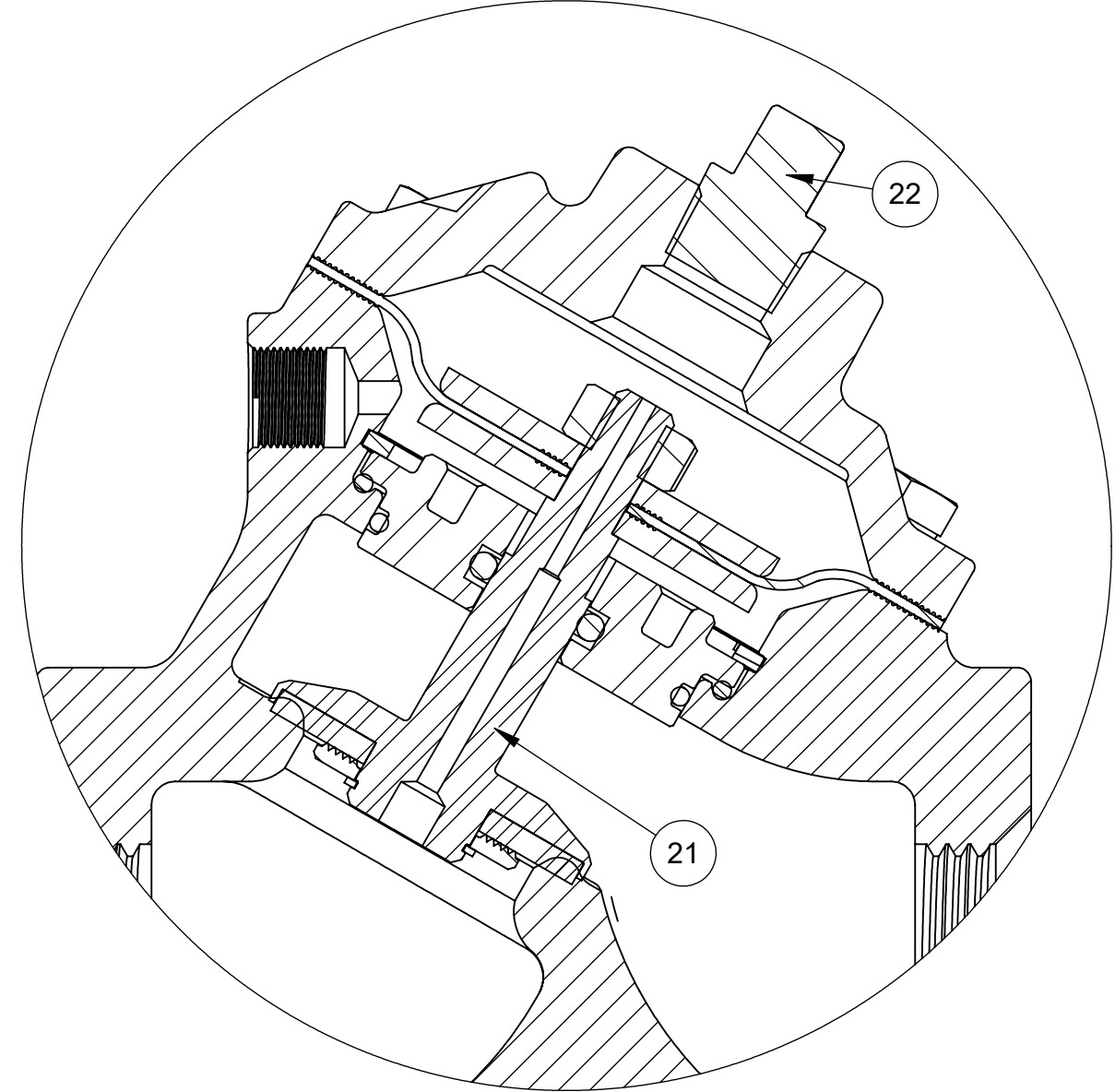
SIZE D DWG NO. 1078633 REV. N

SCALE 1:1 SOLIDWORKS FORMAT SHEET 1 OF 2

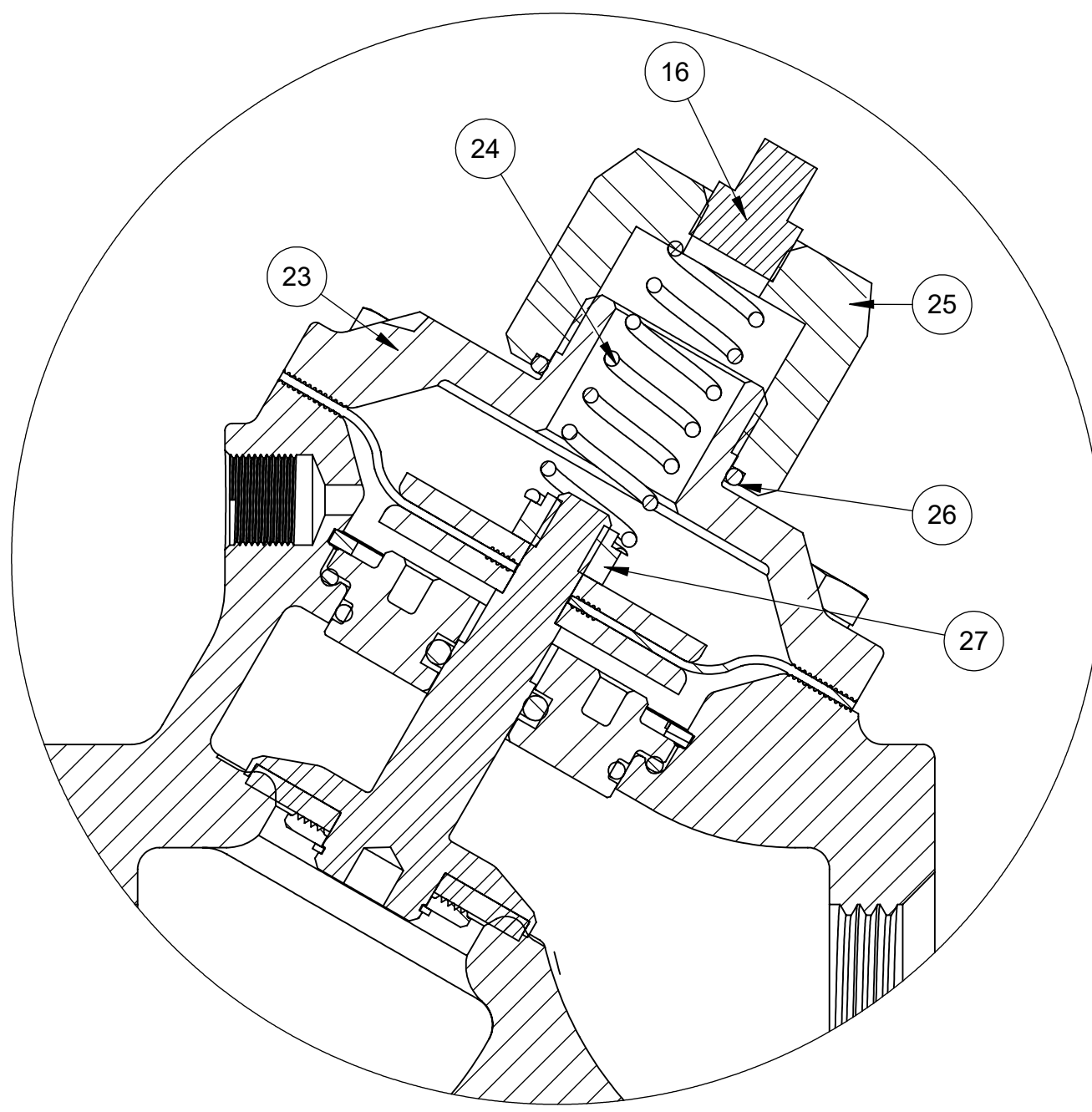
REVISIONS				
ECN	REV.	DESCRIPTION	DATE	APP'D
		SEE SHEET 1 FOR REVISION CHANGES		



LIMIT STOP
 MODEL:V46C-3210-03000 (FLANGED)
 MODEL:V46C-0210-03000 (THREADED)



NORMALLY CLOSED
 MODEL:V46C-3230-03000 (FLANGED)
 MODEL:V46C-0230-03000 (THREADED)



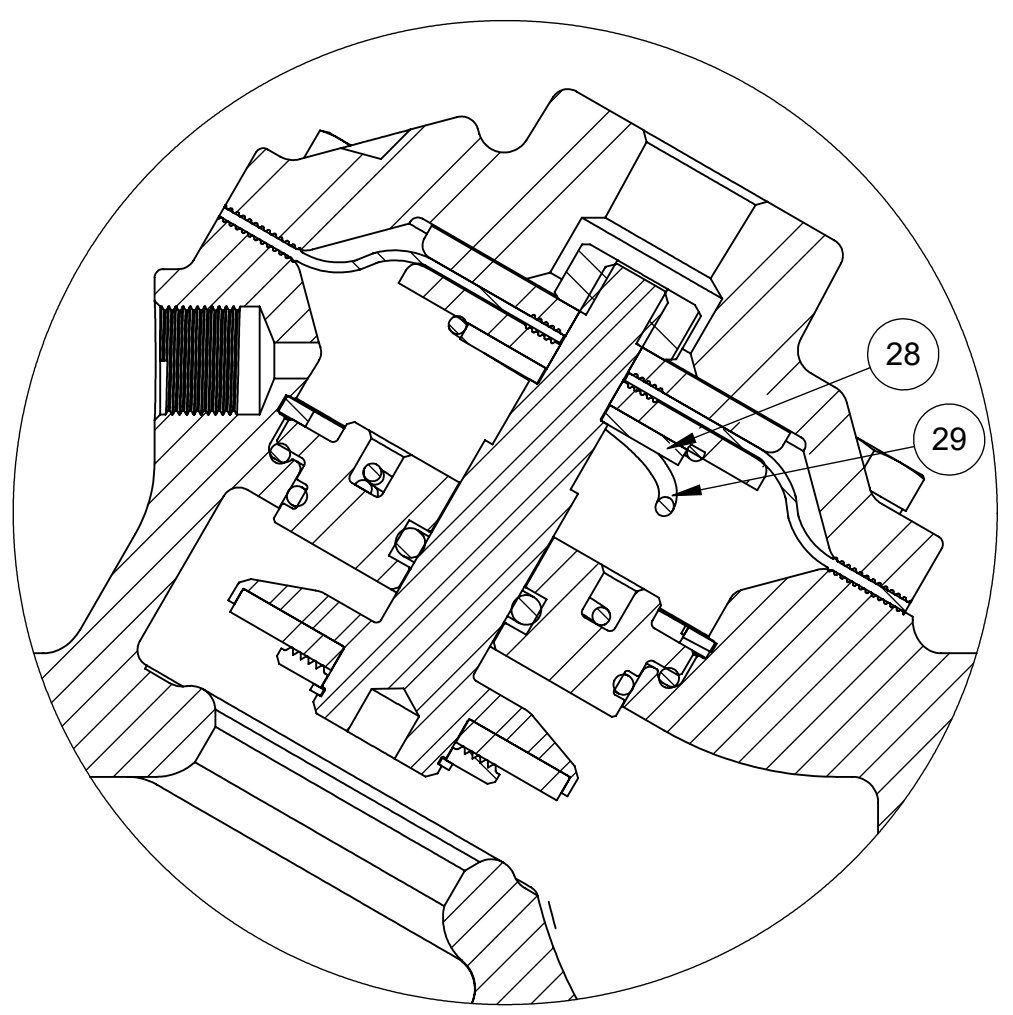
SPRING ASSIST CLOSED
 MODEL:V46C-3202-03000 (FLANGED)
 MODEL:V46C-0202-03000 (THREADED)

LIMIT STOP MODEL				
ITEM NO.	DESCRIPTION	STD	PART NUMBER	QTY.
16	PLUG, 1/8 IN., NPT	SS	1078600	1
17	NUT, LIMIT STOP, 461 - 465	SS	1078678	1
18	BOLT, HEX HD, 5/8 - 18 X 2" FULL	SS	1078676 (SCS-0042)	1
19	O-RING, 2-112	BUNA	1071690 (ORB-112)	1
20	CAP, LIMIT STOP, 461	SS	1078590	1

NORMALLY CLOSED MODEL				
ITEM NO.	DESCRIPTION	STD	PART NUMBER	QTY.
21	SHAFT, 461, NC, CF8M	SS	1078594	1
22	PLUG, 1/4 IN.,NPT SQUARE HEAD	SS	1078592 (PLS-0001)	1

SPRING ASSIST CLOSED				
ITEM NO.	DESCRIPTION	STD	PART NUMBER	QTY.
23	CAP, SPRING ASSIST CLSD, CSS	SS	1078604	1
24	COMPRESSION SPRING, 421, AV1	SS	1078602 (421-SS)	1
25	NUT, SPRING RETAINER	SS	1078598	1
26	O-RING, 2-020	BUNA	1071674 (ORB-020)	1
27	NUT, SPRING CENTERING	SS	1078596	1

SPRING ASSIST OPEN				
ITEM NO.	DESCRIPTION	STD	PART NUMBER	QTY.
28	WASHER, CENTERING	SS	1236665	1
29	SPRING, COMPRESSION	SS	1078608	1



SPRING ASSIST OPEN
 MODEL:V46C-3201-03000 (FLANGED)
 MODEL:V46C-0201-03000 (THREADED)

REPAIR PARTS KITS	
DESCRIPTION	PART NO.
INT. PARTS KIT (LIMIT STOP) CONSISTS OF STANDARD ITEM NO'S 17, 18, 19	1078624
INT. PARTS KIT (NORMALLY CLOSED) CONSISTS OF STANDARD ITEM NO'S 4, 8, 9, 21	1078625
INT. PARTS KIT (SPRING ASSIST CLOSED) CONSISTS OF STANDARD ITEM NO'S 24, 26, 27	1078626
INT. PARTS KIT (SPRING ASSIST OPEN) CONSISTS OF STANDARD ITEM NO'S 28, 29	1078627

CONVERSION KITS	
DESCRIPTION	PART NO.
CONVERSION KIT (LIMIT STOP) CONSISTS OF STANDARD ITEM NO'S 17, 18, 19, 20	1078629
CONVERSION KIT (SPRING ASSIST CLOSED) CONSISTS OF STANDARD ITEM NO'S 16, 23, 24, 25, 27	1078630
CONVERSION KIT (SPRING ASSIST OPEN) CONSISTS OF STANDARD ITEM NO'S 28, 29	1078627

SEE SHEET 1 FOR STANDARD NORMALLY OPEN MODEL

THIS DOCUMENT IS SOLELY THE PROPERTY OF AQ-MATIC REPRODUCTION, USE DISCLOSURE, OR TRANSMISSION OF THIS DOCUMENT OR DETAILS CONTAINED HEREIN, IN PART OR IN WHOLE, IS PROHIBITED WITHOUT THE WRITTEN CONSENT OF AQ-MATIC ENGINEERING. THIS DOCUMENT AND ANY COPIES SHALL BE RETURNED TO AQ-MATIC UPON WRITTEN REQUEST.

INTERPRET DIMENSIONS AND TOLERANCES PER ASME Y14.2M-1994
 UNLESS OTHERWISE SPECIFIED:
 DIMENSIONS ARE IN INCHES (mm)
 CORNER FILLETS R.005-020 (1.27-5.08)
 TOLERANCES:
 ANGLES: ± 1°
 1 PLACE .XX: ± .00 (0.254)
 2 PLACE .XXX: ± .010 (0.3)
 3 PLACE .XXXX: ± .005 (0.13)

THIRD ANGLE PROJECTION

APPROVALS: TRK DATE: 8/6/21

CHECKED BY: APPROVED:

THIS COMPONENT OR PRODUCT DESCRIBED IN THIS DOCUMENT MUST COMPLY WITH RoHS 3 EU (EUROPEAN UNION) DIRECTIVE 2015/863

AQ-Matic AQ-MATIC VALVES AND CONTROLS

CATALOG SHEET 461, 316SS STANDARD MODELS

SIZE D DWG NO. 1078633 REV. N

SCALE 1:1 SOLIDWORKS FORMAT SHEET 2 OF 2