

8

7

6

5

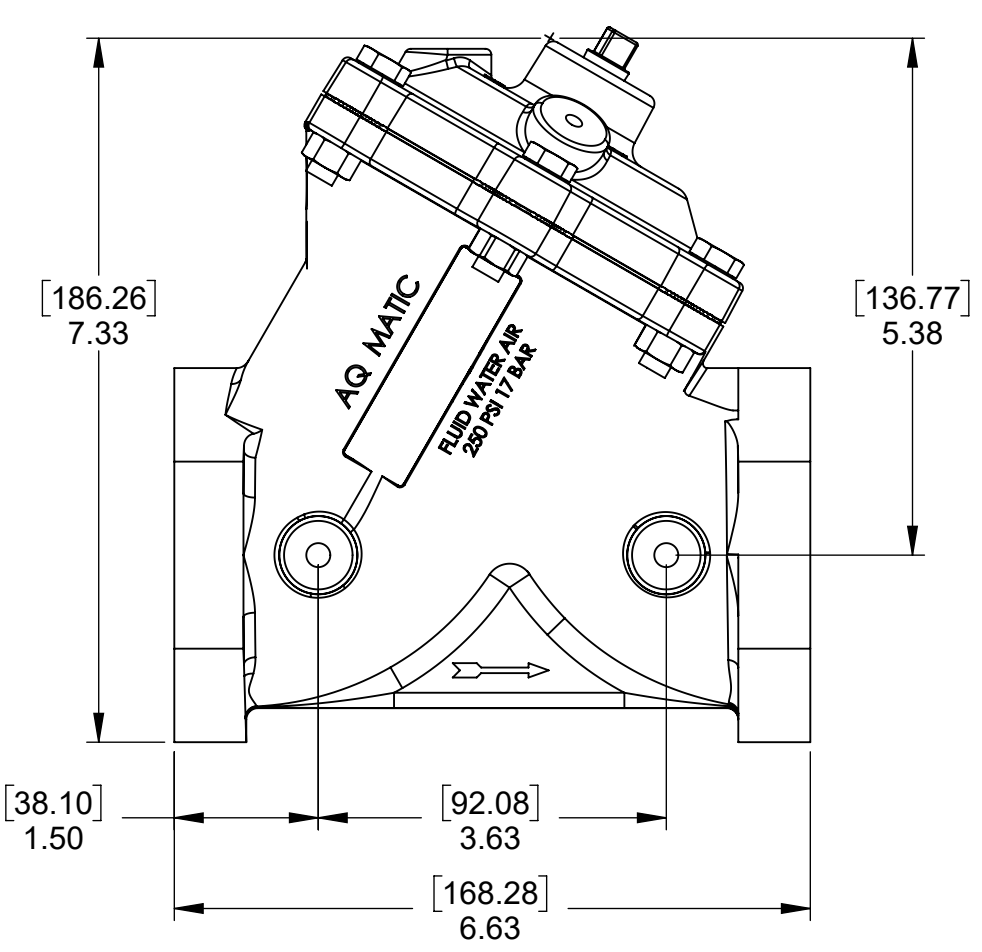
4

3

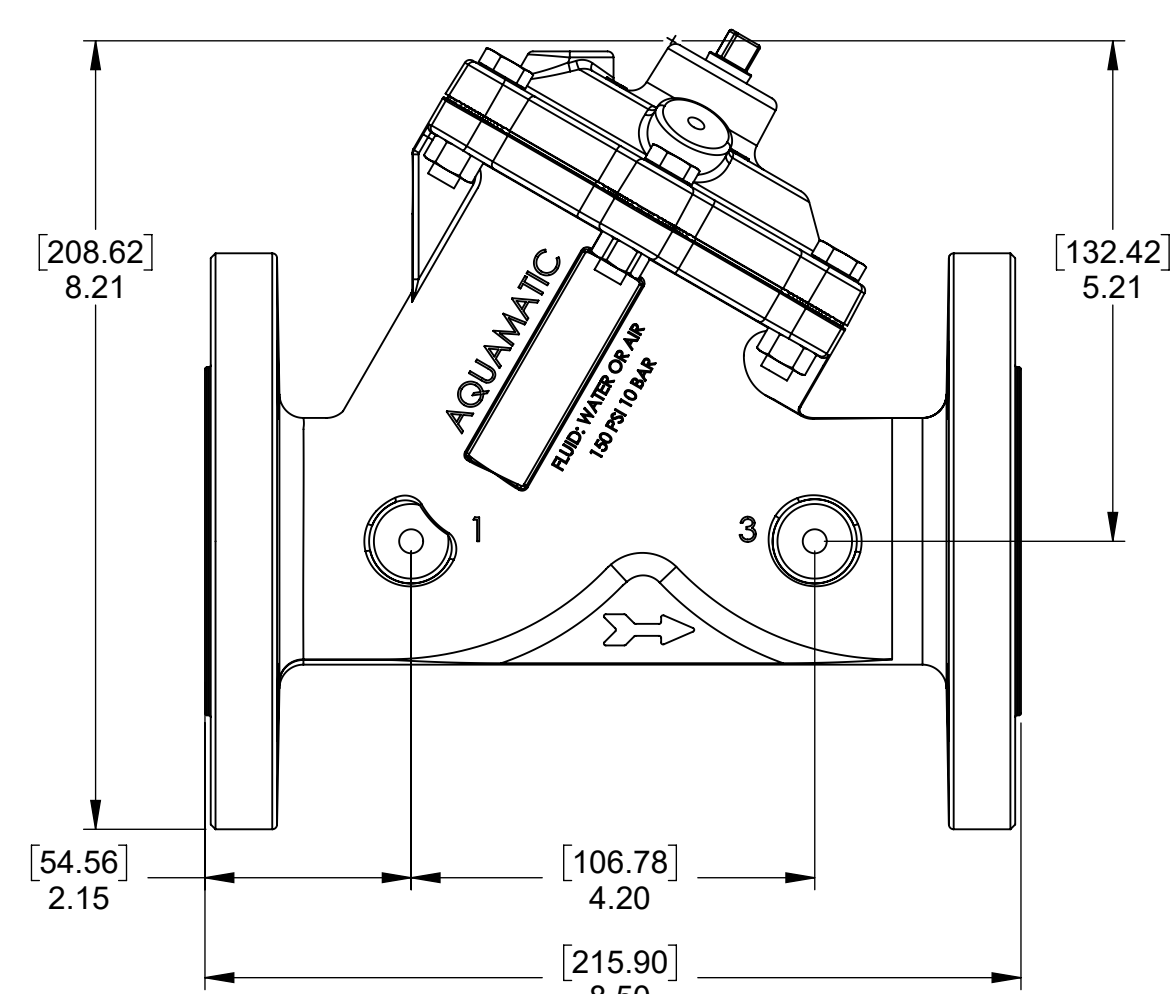
2

1

REVISIONS				
ECN	REV.	DESCRIPTION	DATE	APP'D
1960	K	CATALOG SHEET UPDATE	8/19/21	TRK
2100	L	CATALOG SHEET UPDATE	7/13/22	TRK
2329	M	CATALOG SHEET CORRECTION, VALVE BODY PART#	1/18/24	TRK

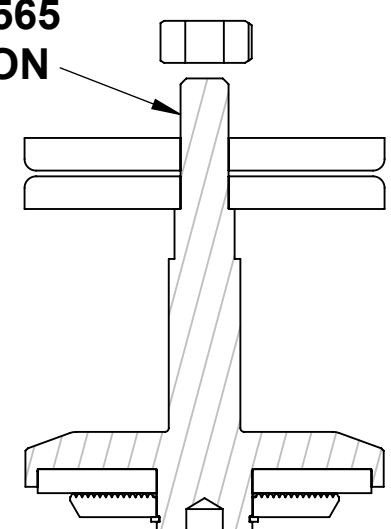


**MODEL: V46F-0200-03000 (THREADED)**  
**(1239092)**

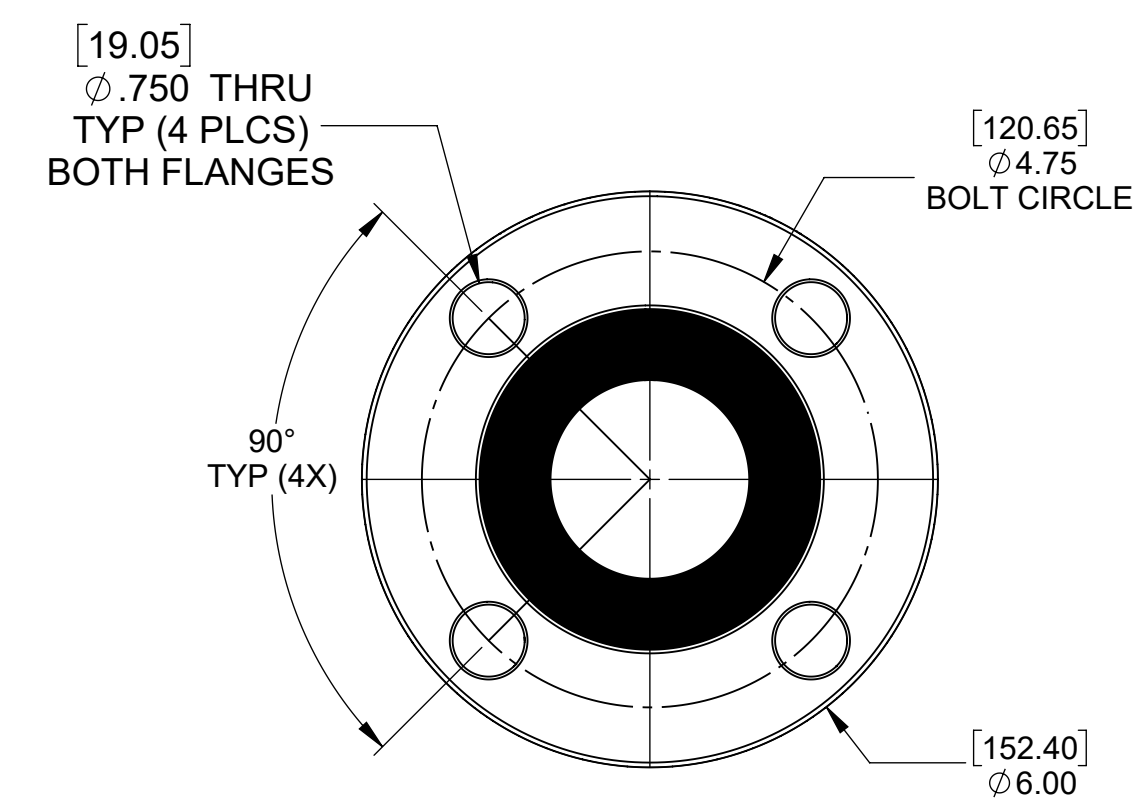


**MODEL: V46F-3200-03000 (FLANGED)**  
**(1081116)**

**APPLY LOCTITE 565  
IN THIS LOCATION**



**DO NOT APPLY LOCTITE TO O-RING SEALS**

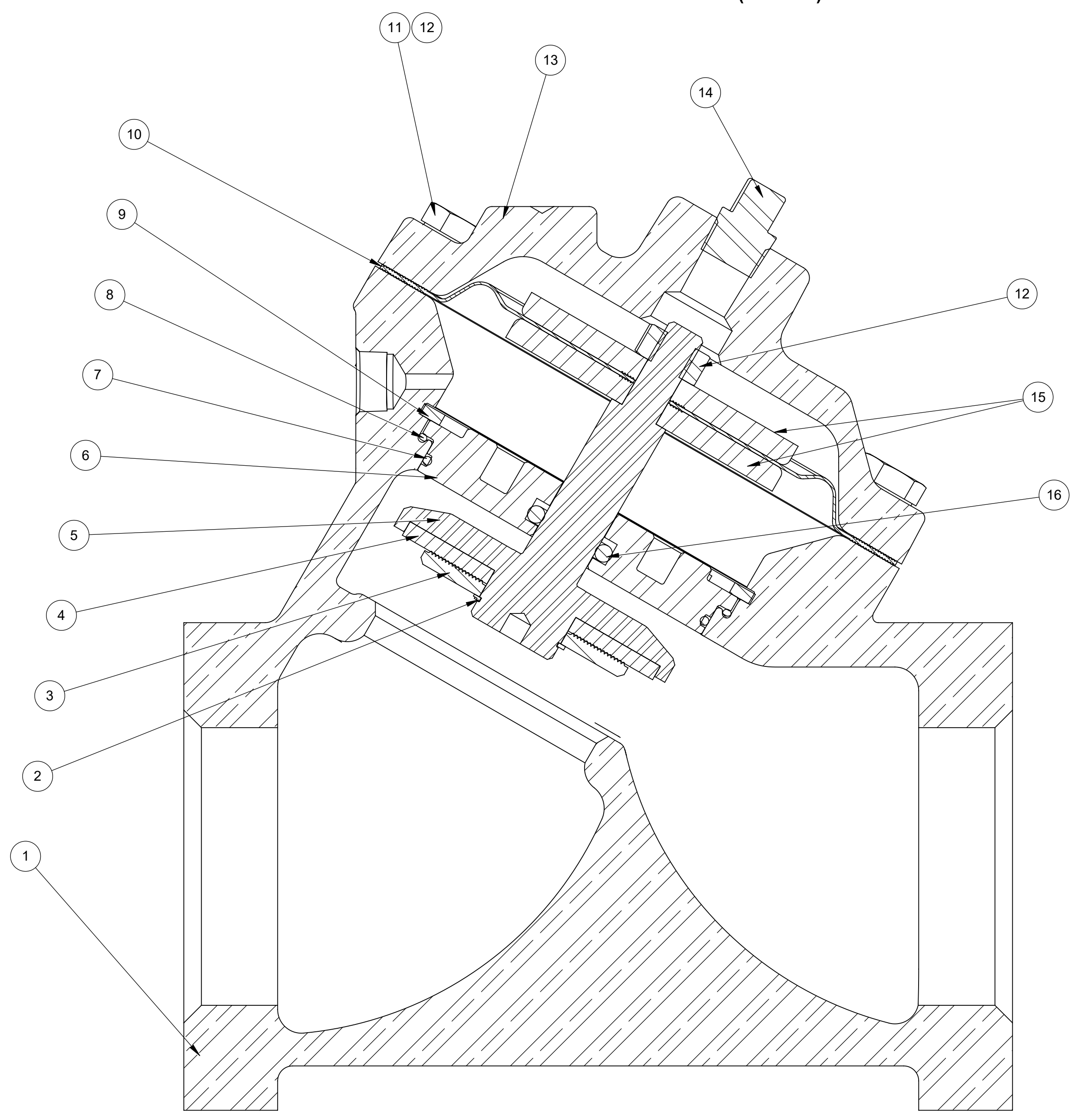


**FLANGES PER ASTM B16.5  
CLASS 150 AND ISO 7005-1 PN20**

**NOTES:**  
1. AMERICAN NATIONAL STANDARD TAPER PIPE THREADS (NPT) PER ANSI B1.20.1.

TORQUE TABLE		
ITEM #	DESCRIPTION	TORQUE TO (+/- 10%)
11 & 12	NUT, SCREW, HEX HEAD	140 IN/LBS
12	NUT UPPER	140 IN/LBS

NORMALLY OPEN MODEL				
ITEM NO.	DESCRIPTION	STD	PART NUMBER	QTY.
1	BODY, 465, 2.00" NPT	CF8M (CAST 316 SS)	* 1079059	1
	BODY, 465, FLANGED, NPT		1078656	
2	RING, RETAINING, .710 X .031	316 SS	* 1078566	1
3	DISC PLATE, 465	316 SS	* 1078654	1
4	DISC, 425	BUNA N	* 1074307 (425-J)	1
		EPDM	1074309 (425-JE)	
		FKM	1074312 (425-JV)	
5	SHAFT, 465, NORMALLY OPEN	CF8M	* 1078670	1
6	SHAFT GUIDE, 465	316 SS	* 1078666	1
7	O-RING, 2-037	BUNA N	* 1079836 (ORB-037)	1
		EPDM	1081948 (ORE-037)	
		FKM	1081950 (ORV-037)	
8	O-RING, 2-039	BUNA N	* 1071685	1
		EPDM	1081949 (ORE-037)	
		FKM	1071796 (ORV-037)	
9	RING, RETAINING, 3.053 X .093	316 SS	* 1078648	1
10	DIAPHRAGM, 425 SERIES	BUNA N	* 1074296 (425-FB)	1
		FKM	1074297 (425-FV)	
11	SCREW, HEX CAP, 5/16 - 18 X 1 1/4	316 SS	* 1078652	6
12	HEX NUT, 5/16"-18	316 SS	* 1078650	7
13	CAP, 465, NPT TAP TOP	CF8M	* 1078660	1
14	PLUG, 1/4 IN., NPT SQUARE HEAD	316 SS	* 1078592 (PLS-0001)	1
15	DIAPHRAGM PLATE, 465	316 SS	* 1078664	2
16	O-RING, 2-206	BUNA N	* 1071699 (ORB-206TC)	1
		EPDM	1239009 (ORE-206TC)	



**SECTION A-A  
SCALE 1.5 : 1**

REPAIR PARTS KITS			
DESCRIPTION	PART NO.		
DIAPHRAGM & SEALS KIT CONSISTS OF ITEM NO'S 2, 4, 7, 8, 9, 10, 12, 16, 21, 23 & SILICONE PACK PART NO. 1071485	1078704	1078705	1078706
	BUNA N INCLUDES DIAPHRAGM 1074296	E.P.D.M. INCLUDES DIAPHRAGM 1074296	FKM INCLUDES DIAPHRAGM 1074297
INT. PARTS KIT (NORM. OPEN) CONSISTS OF STANDARD ITEM NO'S 3, 5, 6, 15(2)	1078707		

THIS DOCUMENT IS SOLELY THE PROPERTY OF AQ-MATIC. REPRODUCTION, USE, DISCLOSURE, OR TRANSMISSION OF THIS DOCUMENT OR DETAILS CONTAINED HEREIN, IN PART OR IN WHOLE, IS PROHIBITED WITHOUT THE WRITTEN CONSENT OF AQ-MATIC ENGINEERING. THIS DOCUMENT AND ANY COPIES SHALL BE RETURNED TO AQ-MATIC UPON WRITTEN REQUEST.

INTERPRET DIMENSIONS AND TOLERANCES PER ASME Y14.5M-1994

UNLESS OTHERWISE SPECIFIED:  
DIMENSIONS ARE IN INCHES (mm)  
CORNER FILLETS R.005-.020 (0.127-.508)  
TOLERANCES:  
ANGLES: ± 1°  
1 PLACE .XX: ± .001 (0.254)  
2 PLACE .XXX: ± .010 (0.3)  
3 PLACE .XXXX: ± .005 (0.13)

THIRD ANGLE PROJECTION	
APPROVALS	DATE
DRAWN TRK	8/19/21
CHECKED BY	
APPROVED	

SEE SHEET 2 FOR CONFIGURATION OPTIONS

**AQ-Matic** AQ-MATIC VALVES AND CONTROLS

CATALOG SHEET, 465  
DIAPHRAGM VALVE STANDARD MODELS

SIZE D	DWG NO. 1078717	REV. M
SCALE 1:2	SOLIDWORKS FORMAT	SHEET 1 OF 2

8

7

6

5

4

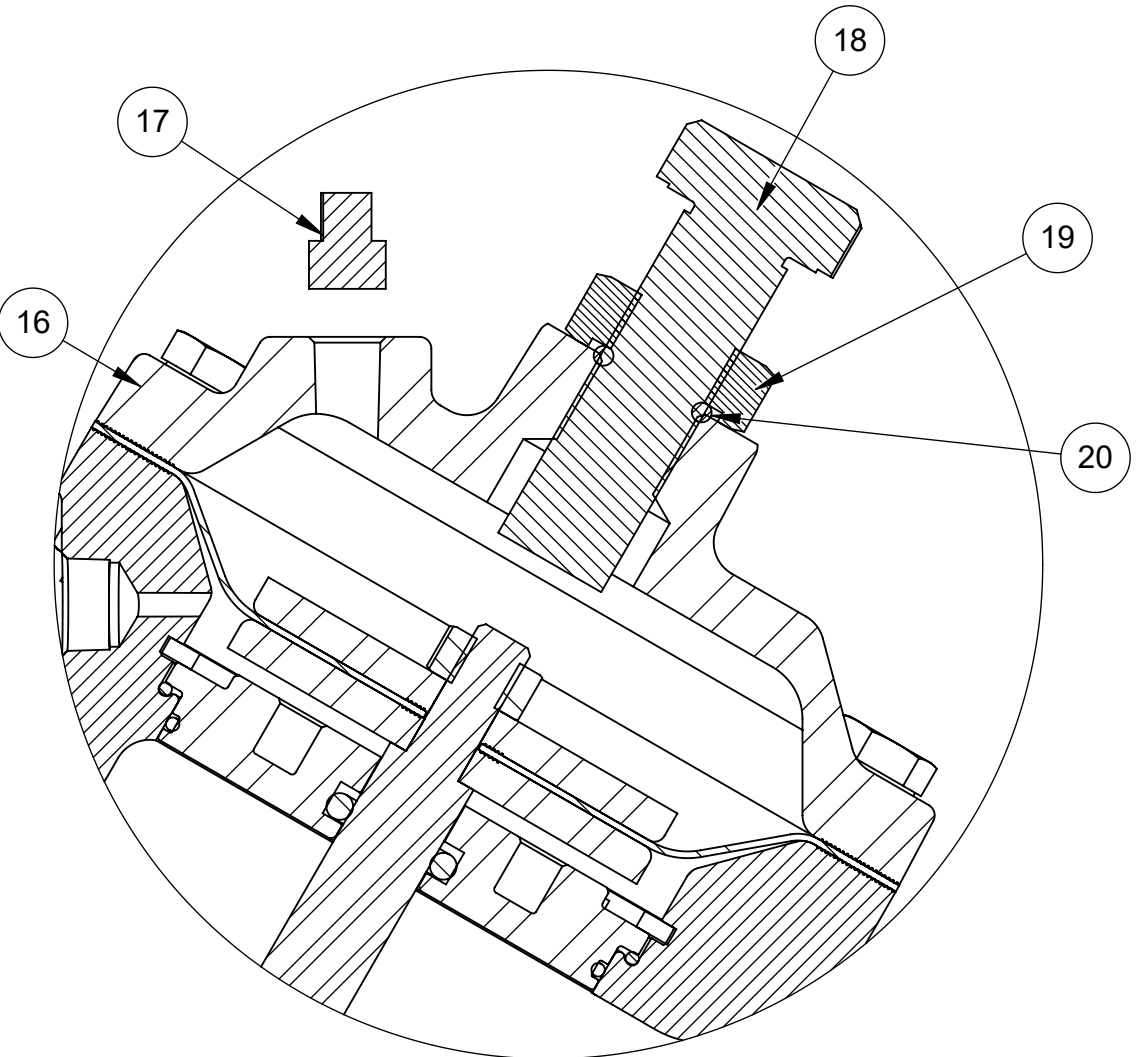
3

2

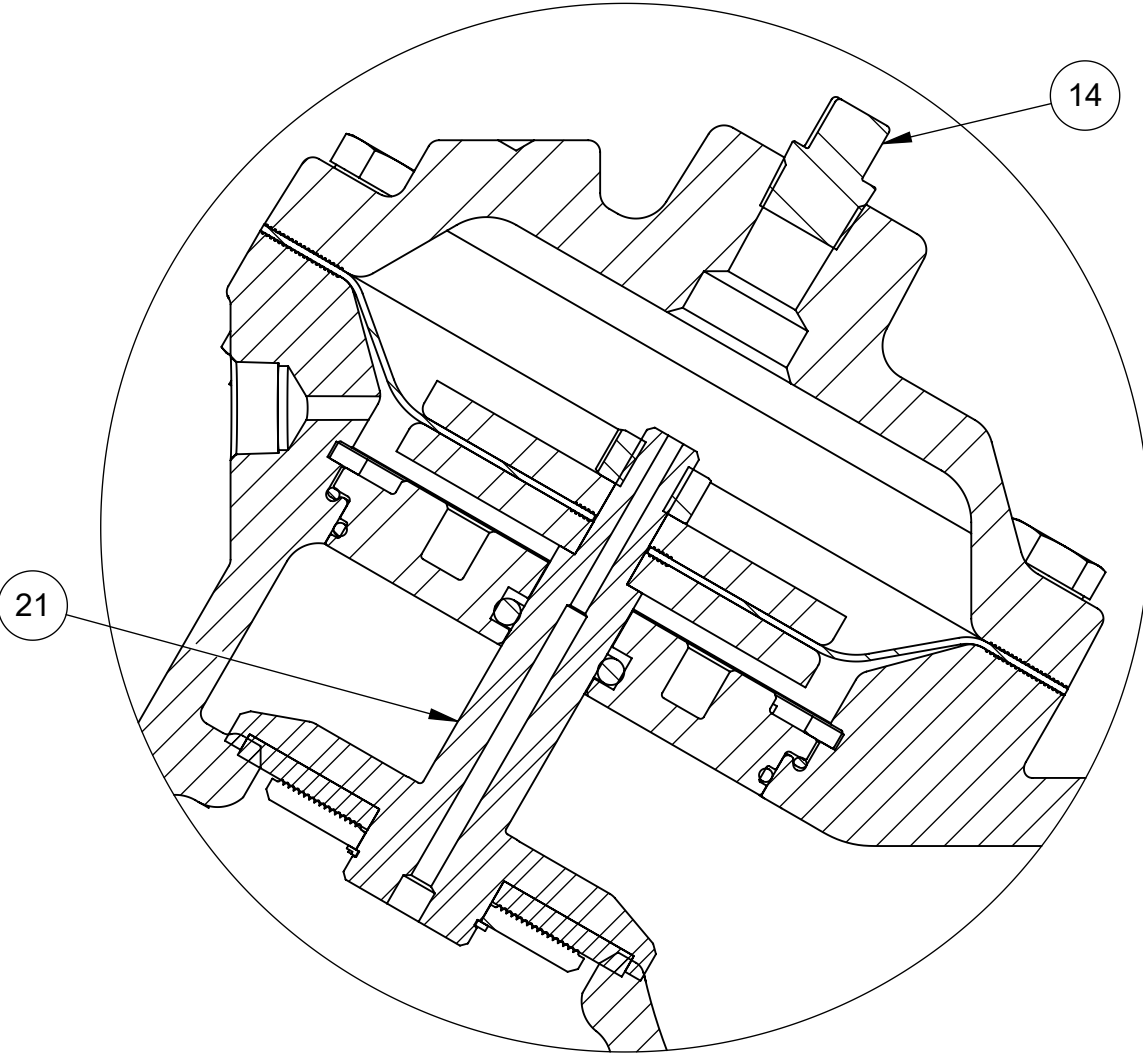
1



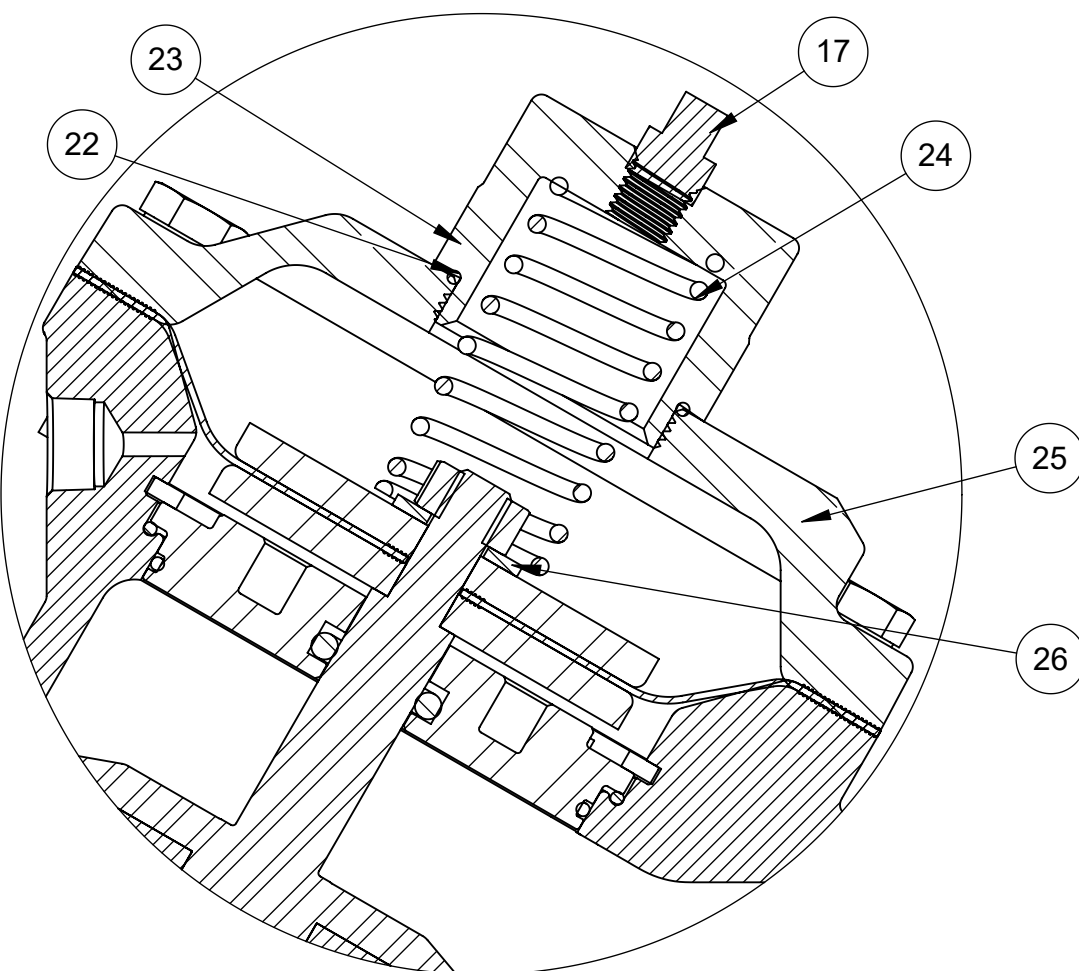
REVISIONS				
ECN	REV.	DESCRIPTION	DATE	APP'D
		SHEET PAGE 1 FOR REVISION UPDATES		



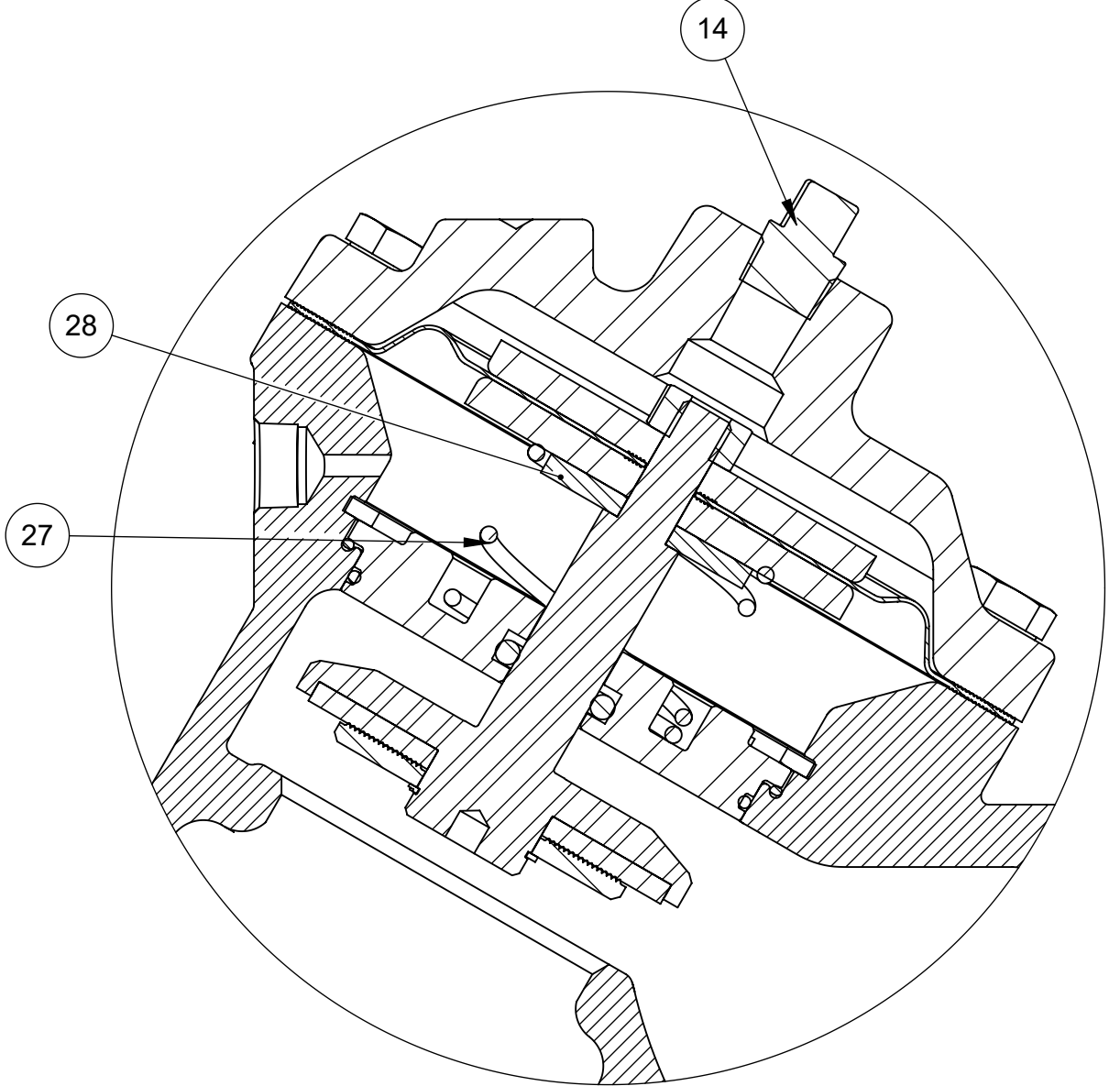
**LIMIT STOP**  
 MODEL:V46F-3210-03000 (FLANGED)  
 MODEL:V46F-0210-03000 (THREADED)



**NORMALLY CLOSED**  
 MODEL:V46F-3230-03000 (FLANGED)  
 MODEL:V46F-0230-03000 (THREADED)



**SPRING ASSIST CLOSED**  
 MODEL:V46F-3202-03000 (FLANGED)  
 MODEL:V46F-0202-03000 (THREADED)



**SPRING ASSIST OPEN**  
 MODEL:V46F-3201-03000 (FLANGED)  
 MODEL:V46F-0201-03000 (THREADED)

REPAIR PARTS KITS	
DESCRIPTION	PART NO.
INT. PARTS KIT (LIMIT STOP) CONSISTS OF STANDARD ITEM NO'S 19, 20, 21	1078708
INT. PARTS KIT (NORMALLY CLOSED) CONSISTS OF STANDARD ITEM NO'S 3, 6, 15(2), 22	1078709
INT. PARTS KIT (SPRING ASSIST CLOSED) CONSISTS OF STANDARD ITEM NO'S 23, 25, 27, 28	1078710
INT. PARTS KIT (SPRING ASSIST OPEN) CONSISTS OF STANDARD ITEM NO'S 28, 29	1078711

CONVERSION KITS	
DESCRIPTION	PART NO.
CONVERSION KIT (LIMIT STOP) CONSISTS OF STANDARD ITEM NO'S 17, 19, 20, 21	1078713
CONVERSION KIT (SPRING ASSIST CLOSED) CONSISTS OF STANDARD ITEM NO'S 18, 23, 24, 25, 26, 27	1078714
CONVERSION KIT (SPRING ASSIST OPEN) CONSISTS OF STANDARD ITEM NO'S 28, 29	1078711

LIMIT STOP MODEL				
ITEM NO.	DESCRIPTION	STD	PART NUMBER	QTY.
16	CAP, 465, NPT, LIMIT STOP	CF8M	* 1078680	1
17	PLUG, 1/8 IN., NPT	316 SS	* 1078600	1
18	BOLT, HEX HD, 5/8 - 18 X 2" FULL	316 SS	* 1078676 (SCS-0042)	1
19	NUT, LIMIT STOP, 461 - 465	316 SS	* 1078678	1
20	O-RING, 2-112	BUNA	* 1071690 (ORB-112)	1

NORMALLY CLOSED MODEL				
ITEM NO.	DESCRIPTION	STD	PART NUMBER	QTY.
21	SHAFT, 465 NORMALLY CLOSED		1078682	1

SPRING ASSIST CLOSED MODEL				
ITEM NO.	DESCRIPTION	STD	PART NUMBER	QTY.
17	PLUG, 1/8 IN., NPT	316 SS	1078600	1
22	O-RING, 2-025	NITRILE	1071677 (ORB-025)	1
23	NUT, SPRING RETAINER, 425 & 465	316 SS	1078686	1
24	SPRING, COMPRESSION	316 SS	1078688 (426-SS)	1
25	CAP, 465, SPRING ASST CLSD	CF8M	1078690	1
26	WASHER, CENTERING	316 SS	1078684	1

SPRING ASSIST OPEN MODEL				
ITEM NO.	DESCRIPTION	STD	PART NUMBER	QTY.
27	SPRING, COMPRESSION		1078692 (421-S)	1
28	SPACER, CENTERING		1078694	1

NOTE:  
 1. SPRING ASSIST CLOSED MODEL CANNOT BE COMBINED WITH LIMITED STOP MODEL.

SEE SHEET 1 FOR STANDARD NORMALLY OPEN MODEL

THIS DOCUMENT IS SOLELY THE PROPERTY OF AQ-MATIC REPRODUCTION, USE DISCLOSURE, OR TRANSMISSION OF THIS DOCUMENT OR DETAILS CONTAINED HEREIN, IN PART OR IN WHOLE, IS PROHIBITED WITHOUT THE WRITTEN CONSENT OF AQ-MATIC ENGINEERING. THIS DOCUMENT AND ANY COPIES SHALL BE RETURNED TO AQ-MATIC UPON WRITTEN REQUEST.

INTERPRET DIMENSIONS AND TOLERANCES PER ASME Y14.2M-1994

UNLESS OTHERWISE SPECIFIED:  
 DIMENSIONS ARE IN INCHES (mm)  
 CORNER FILLETS R.005-020 (1.27-5.08)  
 TOLERANCES:  
 ANGLES: ± 1°  
 1 PLACE XX: ± .002 (0.51)  
 2 PLACE XXX: ± .010 (0.25)  
 3 PLACE XXXX: ± .005 (0.13)

THE COMPONENT OR PRODUCT DESCRIBED IN THIS DOCUMENT MUST COMPLY WITH R6HS 3 EU (EUROPEAN UNION) DIRECTIVE 2015/983

THIRD ANGLE PROJECTION

APPROVALS: TRK DATE: 8/19/21

DRAWN: TRK

CHECKED BY:

APPROVED:

SIZE: D DWG NO: 1078717 REV: M

SCALE: 1:2 SOLIDWORKS FORMAT SHEET 2 OF 2

**AQ-Matic** AQ-MATIC VALVES AND CONTROLS

CATALOG SHEET, 465 DIAPHRAGM VALVE STANDARD MODELS