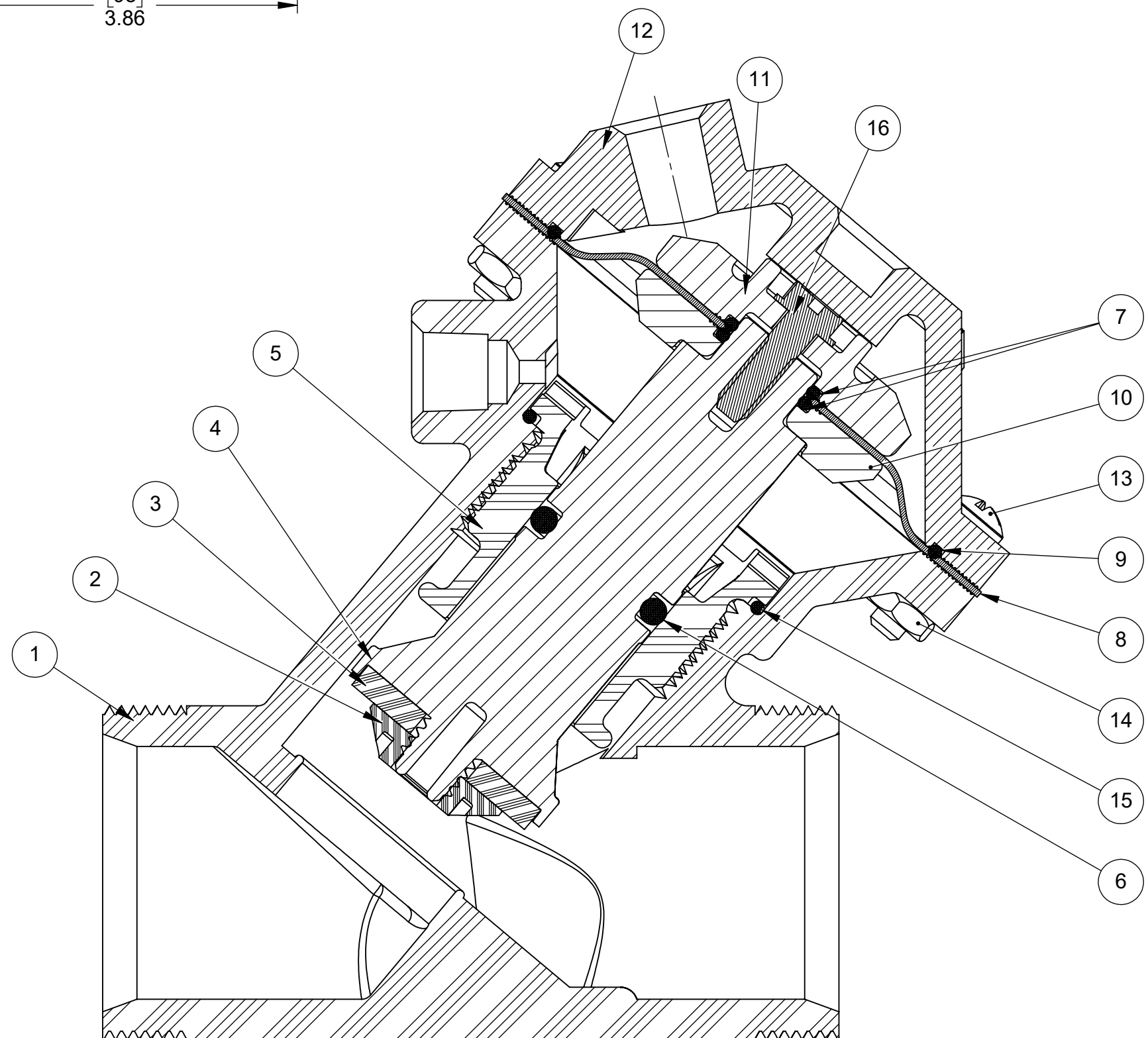


ASSEMBLY TOOLS	
DESCRIPTION	PART NO.
FOR INSTALLATION & REMOVAL OF SHAFT GUIDE (ITEM #4)	1075059 (521-Z)
TO HOLD SHAFT (ITEM #3) DURING ASSEMBLY/ DISASSEMBLY	1077837

TORQUE TABLE		
ITEM #	DESCRIPTION	TORQUED TO (+/- 10%)
2	PLATE, DISC	8 IN-LB
5	GUIDE, SHAFT	32 IN-LB
13 & 14	CAP SCREW & NUT	30 IN-LB
16	SCREW, CUTTING	35 IN-LB

REVISIONS				
ECN	REV.	DESCRIPTION	DATE	APP'D
1001	L	AQ-MATIC UPDATE & VERIFIED PART NUMBERS	01/17/17	MGS
1287	M	CORRECT ERROR IN REPAIR PARTS TABLE	08/16/18	KJB
1507	N	UPDATE BRANDING, CORRECT ERRORS, ADD TORQUE TABLE	05/03/19	KJB
1964	P	CATALOG SHEET UPDATE / RESTRUCTURE ASSEMBLY MODEL	11/01/21	TRK
2031	R	REVERT TO OLD PART NUMBER FOR NORMALLY CLOSED AND P.I. SHAFT	03/09/22	SMH

NORMALLY OPEN MODEL				
ITEM NO.	DESCRIPTION		PART NUMBER	QTY.
1	BODY, 521, VALVE	NORYL	43476 (521-K)	1
2	PLATE, DISC, 521	NORYL	1075845	1
3	DISC, 521	EPDM	1077814 (521-J)	1
		BUTYL	1077815 (521-JJ)	
		FKM	1077816 (521-JV)	
4	SHAFT, 521, N.O.	NORYL	1075842	1
5	SHAFT GUIDE, 521	NORYL	1075030 (521-GNO)	1
		EPDM	1071743 (ORE-208)	
		BUTYL	1071775 (ORJ-208)	
6	O-RING, 2-208	FKM	1071814 (ORV-208)	1
		EPDM	1071718 (ORE-014)	
		FKM	1071788 (ORV-014)	
7	O-RING, 2-014	BUNA	1075028 (521-FB)	1
		FKM	1075029 (521-FV)	
8	DIAPHRAGM, 521	BUNA	1071715 (ORB-805)	1
9	O-RING, 2-805	BUNA	1071715 (ORB-805)	1
10	PLATE, DIAPHRAGM, 521, LOWER	NORYL	43043	1
11	PLATE, DIAPHRAGM, 521, UPPER	NORYL	43042	1
12	CAP, VALVE, 521	NORYL	43477	1
13	SCREW, 10-32 X 3/4" RND HD.	SS	1072380 (SCS-0095)	8
		SS	1071648 (NUS-0006)	
14	HEX NUT, 10-32	EPDM	1081945 (ORE-029)	1
		BUTYL	43893 (ORJ-029)	
		FKM	1081947 (ORV-029)	
15	O-RING, 2-029	SS	1077783	1
16	SCREW, CUTTING #10-16 TYPE BT	SS	1077783	1



1070154 (K521-X200-14000)
NORMALLY OPEN (STANDARD)

- SEE DRAWING 1081309 FOR UNION END CONNECTORS & GROOVED ADAPTORS
- SEE SHEET 2 FOR CONFIGURATION OPTIONS

REPAIR PARTS		
DESCRIPTION	PART NO.	
DIAPHRAGM & SEALS KIT CONSISTS OF ITEM NO'S 3, 6, 7, 8, 9, AND 15	1081792 (521-RAN) E.P.D.M. INCLUDES DIAPHRAGM 1075028 (521-FB)	1081791(521-RAJN) BUTYL INCLUDES DIAPHRAGM 1075028 (521-FB)
	1081796 (521-RAVN) FKM INCLUDES DIAPHRAGM 1075028 (521-FB)	1081795 (521-RAVFN) E.P.D.M. INCLUDES DIAPHRAGM 1075029 (521-FV)
INTERNAL PARTS KIT (NORMALLY OPEN) CONSISTS OF ITEM NO'S 2, 4, 5, 10, 11, AND 16	1079621 (K521-RFN)	

THIS DOCUMENT IS SOLELY THE PROPERTY OF AQ-MATIC REPRODUCTION, USE DISCLOSURE, OR TRANSMISSION OF THIS DOCUMENT OR DETAILS CONTAINED HEREIN, IN PART OR IN WHOLE, IS PROHIBITED WITHOUT THE WRITTEN CONSENT OF AQ-MATIC ENGINEERING. THIS DOCUMENT AND ANY COPIES SHALL BE RETURNED TO AQ-MATIC UPON WRITTEN REQUEST.

DO NOT SCALE DRAWING. DIMS. ARE IN INCHES [mm]
INTERPRET DIMS AND TOLERANCES PER ASME Y14.5M -1994 UNLESS OTHERWISE SPECIFIED:
*CORNER FILLETS R.005-.020 [1.27-.508]
TOLERANCES:
ANGLES: ± 1°
1 PLACE .X: ± .100 [2.54]
2 PLACE .XX: ± .010 [0.25]
3 PLACE .XXX: ± .005 [0.13]

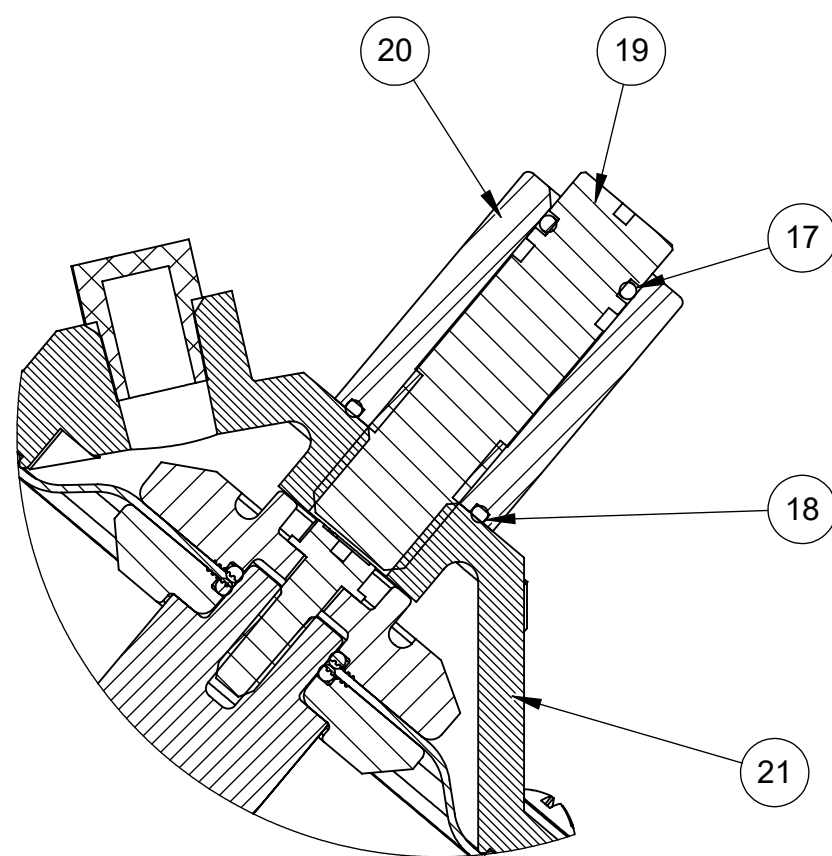
THE COMPONENT, PART, OR ASSEMBLY DESCRIBED IN THIS DOCUMENT MUST COMPLY WITH THE EU (EUROPEAN UNION) DIRECTIVE: RoHS DIRECTIVE 2011/65/EC.

THIRD ANGLE PROJECTION	
APPROVALS	DATE
DRAWN ANH	8/29/13
CHECKED BY	
APPROVED	

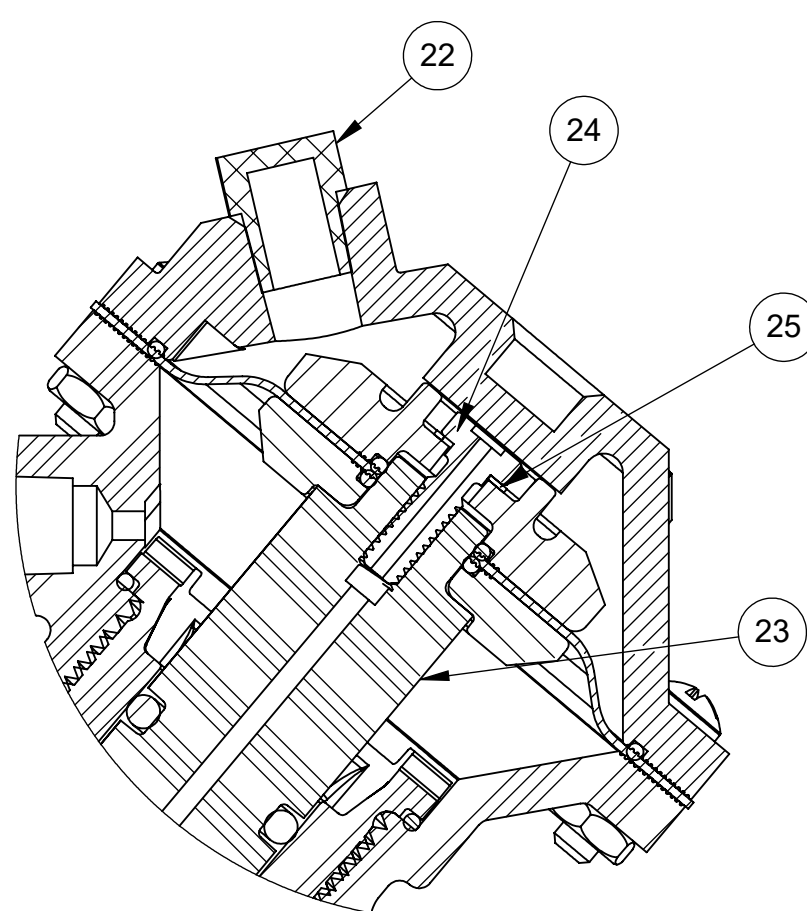


CATALOG SHEET, 521
DIAPHRAGM VALVE STANDARD MODEL

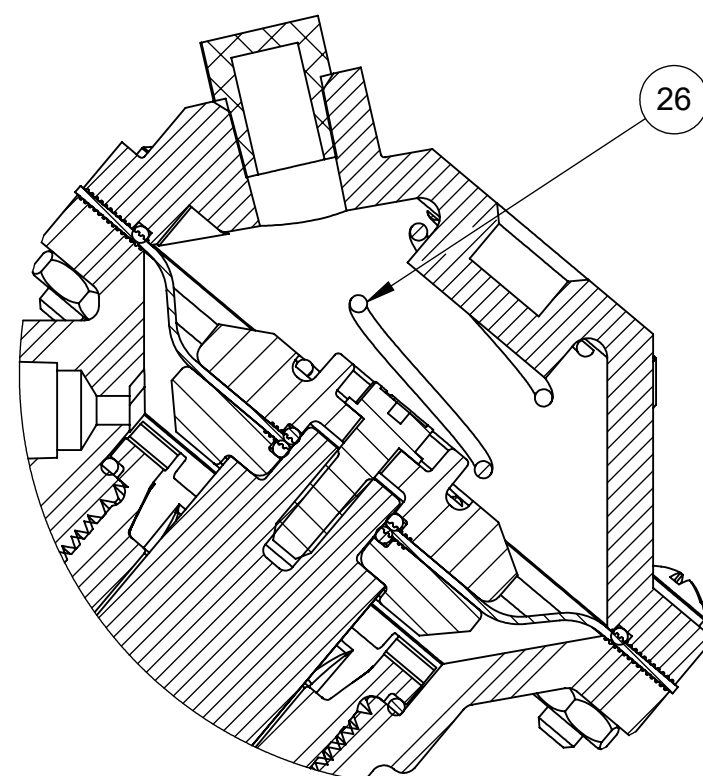
SIZE C	DWG NO. 1077654	REV. R
SCALE 1:1	SOLIDWORKS FORMAT	SHEET 1 OF 2



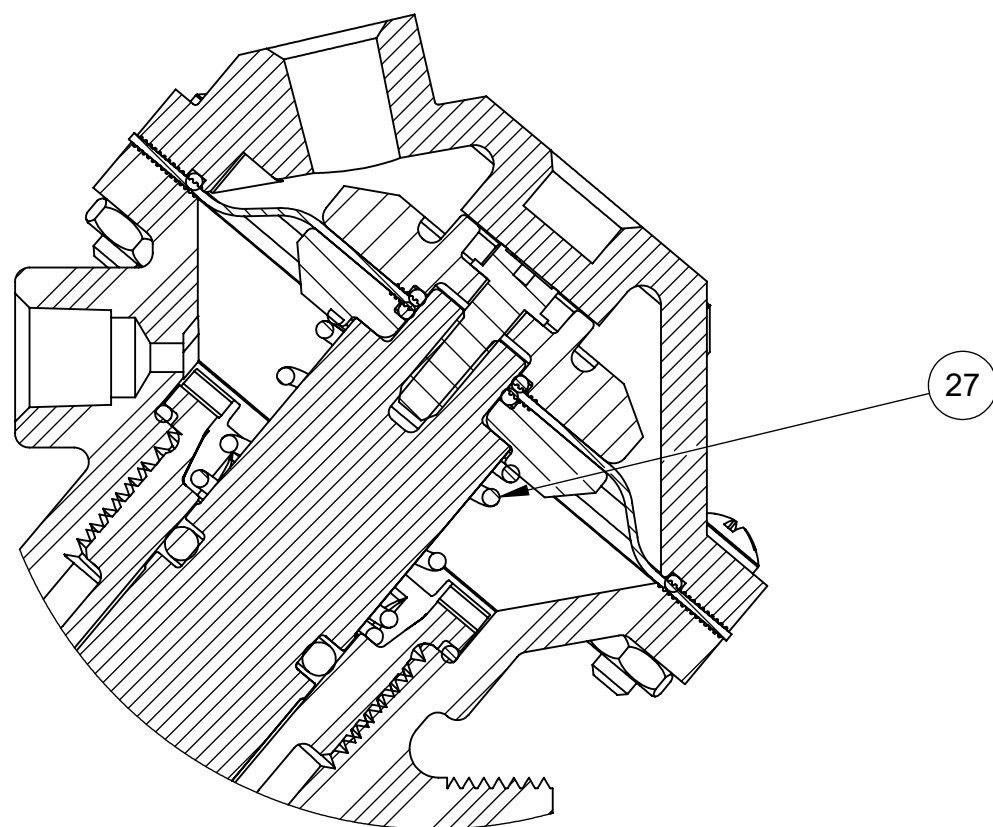
1070155 (K521-X210-14000)
LIMIT STOP



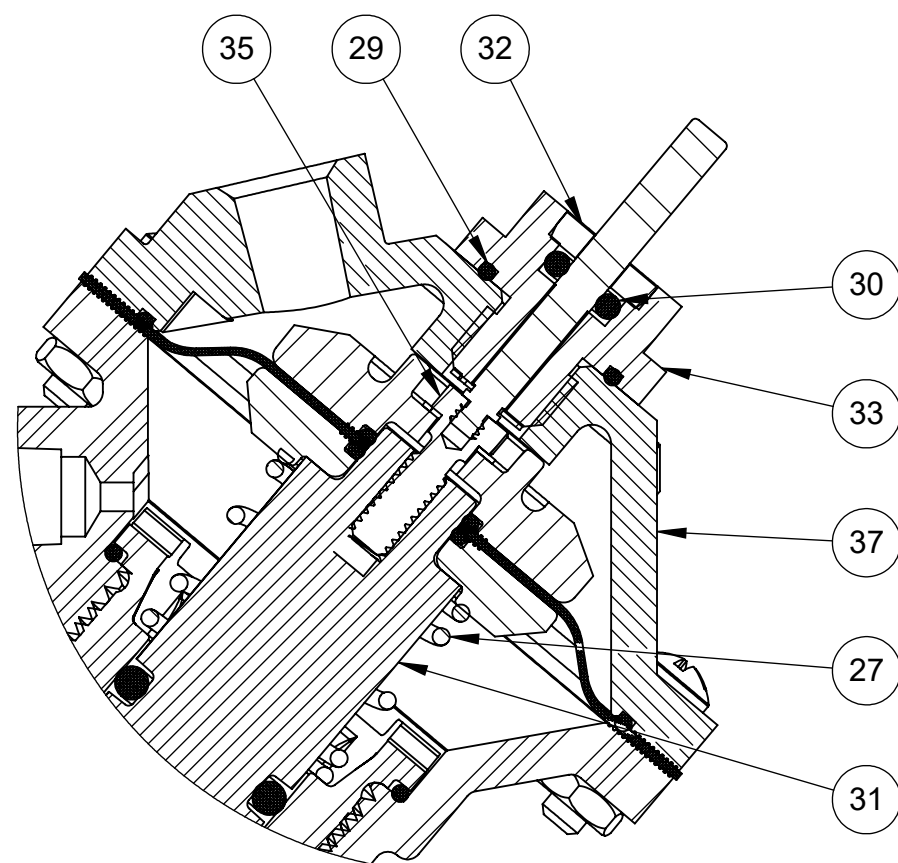
1070159 (K521-X230-14000)
NORMALLY CLOSED



1070157 (K521-X202-14000)
SPRING ASSIST CLOSED



1070158 (K521-X201-14000)
SPRING ASSIST OPEN



1071143 (K521-X221-14000)
POSITION INDICATOR

REVISIONS				
ECN	REV.	DESCRIPTION	DATE	APP'D
		SEE SHEET 1 FOR A LIST OF CHANGES		

LIMIT STOP MODEL				
ITEM NO.	DESCRIPTION		PART NUMBER	QTY.
17	O-RING, 2-012	BUNA	1071668 (ORB-012)	1
18	O-RING, 2-016	BUNA	1071671	1
19	LIMIT STOP SCREW	SS	1075058 (521-Y)	1
20	LIMIT STOP NUT	SS	1075057	1
21	CAP, 521, LIMIT STOP	NORYL	43724 (521-BBOK)	1

NORMALLY CLOSED MODEL				
ITEM NO.	DESCRIPTION		PART NUMBER	QTY.
22	MALE PIPE PLUGS 1/8"	HDPE	1071912	1
23	SHAFT, 521, N.C.	NORYL	1077909	1
24	SCREW, 521, DIA PLT, NC	SS	1077830	1
25	WASHER, LOCK,INTERNAL,#10,SS	SS	1078992 (WAS-0005)	1

SPRING ASSIST CLOSED MODEL				
ITEM NO.	DESCRIPTION		PART NUMBER	QTY.
26	SPRING, COMPRESSION	SS	1075051 (521-S)	1

SPRING ASSIST OPEN MODEL				
ITEM NO.	DESCRIPTION		PART NUMBER	QTY.
27	SPRING	SS	1236766 (424-S)	1

POSITION INDICATOR MODEL				
ITEM NO.	DESCRIPTION		PART NUMBER	QTY.
27	SPRING	SS	1236766 (424-S)	1
28	WASHER, LOCK,INTERNAL,#10,SS	SS	1078992 (WAS-0005)	1
29	O-RING, 2-016	BUNA	1071671	1
30	O-RING, 2-106	BUNA	1071687	1
31	SHAFT, 521, P.I.	NORYL	1077911	1
32	PLUG, GUIDE HOUSING, 520	SS	1074971	1
33	GUIDE HOUSING, 521	SS	1075038	1
34	ROD, PI, 521	SS	1078062	1
35	SCREW, 521, DIA PLT, PI	SS	1077832	1
36	E - RING	SS	1076200	1
37	CAP, 521, LIMIT STOP	NORYL	43724 (521-BBOK)	1

NOTE:
 1. POSITION INDICATOR MODEL CANNOT BE COMBINED WITH NORMALLY CLOSED OR LIMIT STOP OPTIONS.
 2. POSITION INDICATOR MODEL FURNISHED WITH SPRING ASSIST OPEN OPTION.

• SEE DRAWING 1081309 FOR UNION END CONNECTORS & GROOVED ADAPTORS
 • SEE SHEET 1 FOR STANDARD NORMALLY OPEN MODEL

CONVERSION KITS	
DESCRIPTION	PART NO.
CONVERSION KIT (LIMIT STOP) CONSISTS OF ITEM NO'S 17 THRU 21	1071090 (K521-LSC)
CONVERSION KIT (SPRING ASSIST CLOSED) CONSISTS OF ITEM NO. 26	1075054 (521-SC)
CONVERSION KIT (SPRING ASSIST OPEN) CONSISTS OF ITEM NO. 27	1075055 (521-SO)
CONVERSION KIT (POSITION INDICATOR) CONSISTS OF ITEM NO'S 27 THRU 37	1079620 (K521-PICN)

REPAIR PARTS KITS	
DESCRIPTION	PART NO.
INT. PARTS KIT (LIMIT STOP) CONSISTS OF ITEM NO'S 17 THRU 20	1075040 (521-LS)
INT. PARTS KIT (NORM. CLOSED) CONSISTS OF ITEM NO'S 2,5,10,16,23,24,25	1079622 (K521-RGN)
INT. PARTS KIT (SPRING ASSIST CLOSED) CONSISTS OF ITEM NO. 26	1075054 (521-SC)
INT. PARTS KIT (SPRING ASSIST OPEN) CONSISTS OF ITEM NO. 27	1075055 (521-SO)
INT. PARTS KIT (POSITION INDICATOR) CONSISTS OF ITEM NO'S 27 THRU 36	1081790 (521-PIN)

THIS DOCUMENT IS SOLELY THE PROPERTY OF AQ-MATIC REPRODUCTION, USE DISCLOSURE, OR TRANSMISSION OF THIS DOCUMENT OR DETAILS CONTAINED HEREIN, IN PART OR IN WHOLE, IS PROHIBITED WITHOUT THE WRITTEN CONSENT OF AQ-MATIC ENGINEERING. THIS DOCUMENT AND ANY COPIES SHALL BE RETURNED TO AQ-MATIC UPON WRITTEN REQUEST.

DO NOT SCALE DRAWING. DIMS. ARE IN INCHES [mm] INTERPRET DIMS AND TOLERANCES PER ASME Y14.5M -1994 UNLESS OTHERWISE SPECIFIED:
 *CORNER FILLETS R.005-.020 [0.127-.508]
 TOLERANCES:
 ANGLES: ± 1°
 1 PLACE .X: ± .100 [2.54]
 2 PLACE .XX: ± .010 [0.25]
 3 PLACE .XXX: ± .005 [0.13]

THE COMPONENT, PART, OR ASSEMBLY DESCRIBED IN THIS DOCUMENT MUST COMPLY WITH THE EU (EUROPEAN UNION) DIRECTIVE: RoHS DIRECTIVE 2011/65/EC.

THIRD ANGLE PROJECTION	
APPROVALS	DATE
DRAWN	
CHECKED BY	
APPROVED	



CATALOG SHEET, 521 DIAPHRAGM VALVE STANDARD MODEL		
SIZE C	DWG NO. 1077654	REV. R
SCALE 1:2	SOLIDWORKS FORMAT	SHEET 2 OF 2