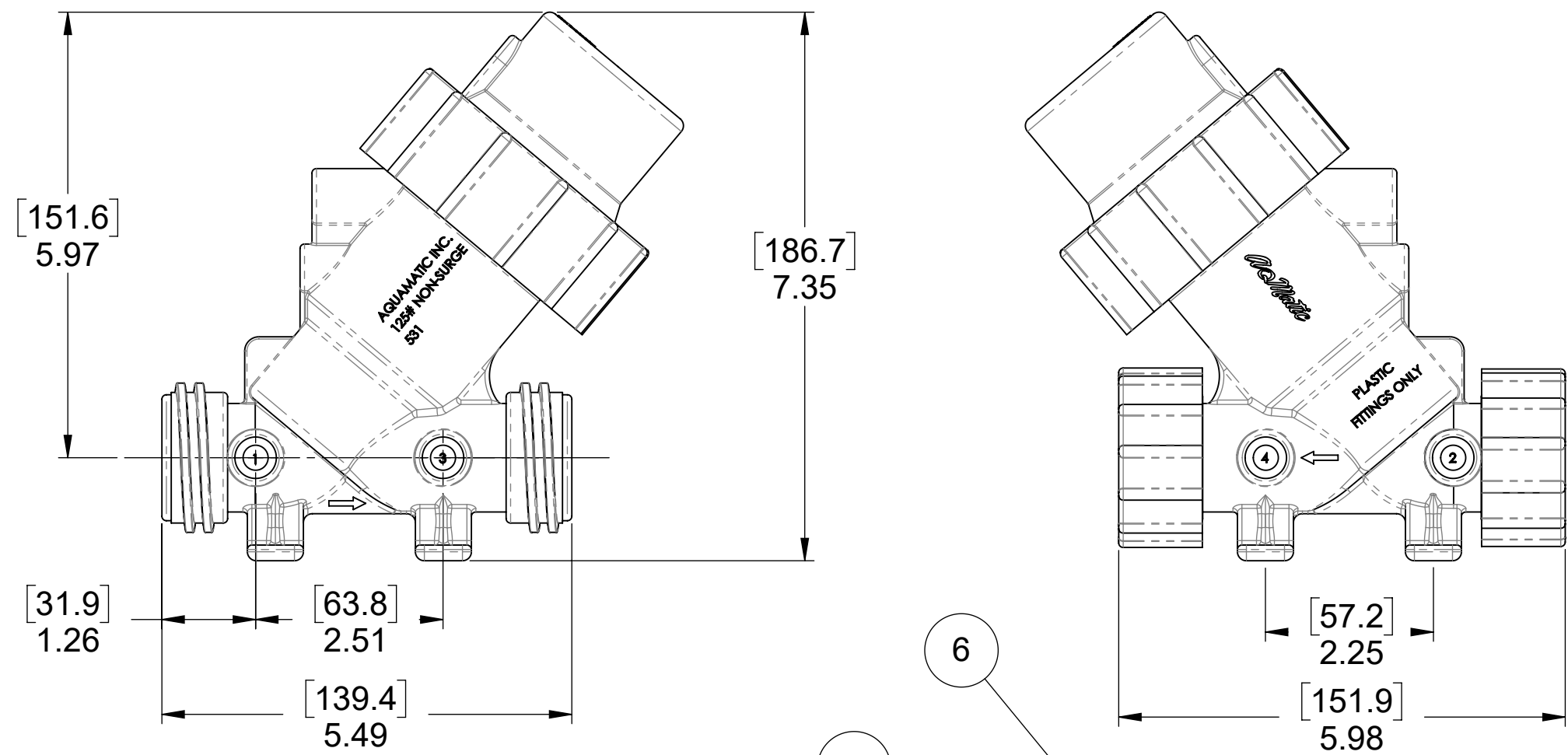
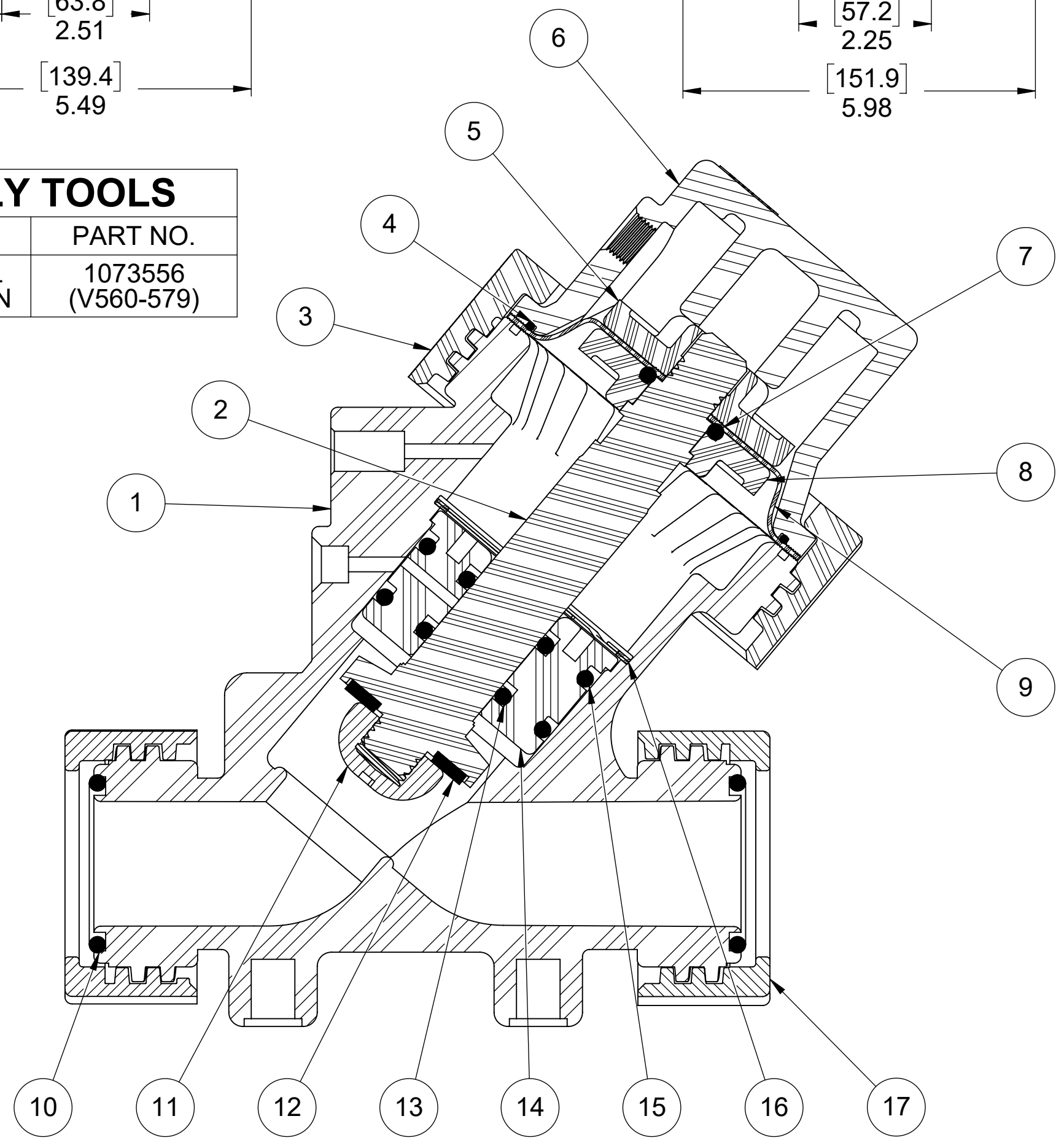


| REVISIONS | | | | |
|-----------|------|--|------------|-------|
| REV | ECN | DESCRIPTION | DATE | APP'D |
| L | 1286 | PUT LOGO ON VALVE BODY, CORRECT MINOR ERRORS | 8/16/2018 | KJB |
| M | 1334 | REMOVE 1073557 FROM ASSEMBLY TOOLS TABLE | 9/14/2018 | KJB |
| N | 1716 | 1-PAPER SIZE B TO C, 2-REM'D: 1071796 1071787 1071789, 3-ITEMS RENUMBERED, 4- HATCHING PATTERNS CHANGED & CONSOLIDATED, 5-ADD'D MODEL NO'S | 7/24/2020 | PMJ |
| P | 2133 | REPLACED P/N 1073312 WITH 4510752 RETAINING RING | 12/10/2021 | PMJ |



| ASSEMBLY TOOLS | |
|-----------------|------------|
| DESCRIPTION | PART NO. |
| LIMIT STOP TOOL | 1073556 |
| TOOL NOT SHOWN | (V560-579) |



| BOM TABLE | | | | |
|-----------|----------|-----------|---------------------------------|--------------------------------|
| ITEM | PART NO. | MODEL | DESCRIPTION | QTY |
| 1 | 1073287 | V531-410K | BODY, 531, VALVE | 1 |
| 2 | 1073294 | | SHAFT,531,NORYL,MCHD,RF | 1 |
| 3 | 1073395 | V535-080K | NUT, SOCKET RETAINING, 535 PIPE | 1 |
| 4 | 1071685 | ORB-039 | O-RING, 2-039 | E.P.D.M. 1 |
| 5 | 1073264 | V531-040K | PLATE, DIAPHRAGM, 531, UPPER | 1 |
| 6 | 1073263 | M531-021K | CAP, VALVE, 531 | 1 |
| 7 | 1071700 | ORB-208 | O-RING, 2-208 | FKM 1 |
| | 1071814 | ORV-208 | | |
| 8 | 1073265 | V531-045K | PLATE, DIAPHRAGM, LWR, 531 | 1 |
| 9 | 1073277 | V531-100 | DIAPHRAGM, K531 | BUNA N 1 |
| | 1071748 | ORE-218 | O-RING, 2-218 | E.P.D.M. 1 BUTYL 2 FKM 2 |
| 10 | 1071779 | ORJ-218 | | |
| | 1071819 | ORV-218 | | |
| 11 | 1073274 | V531-093K | NUT, DISC RETAINING, 531 | 1 |
| | 1073279 | V531-110 | DISC | E.P.D.M. 1 BUTYL 1 FKM 1 |
| 12 | 1073280 | V531-111 | | |
| | 1073281 | V531-112 | | |
| | 1071744 | ORE-210 | O-RING, 2-210 | E.P.D.M. 1 BUTYL 2 FKM 2 |
| 13 | 1071776 | ORJ-210 | | |
| | 1071815 | ORV-210 | | |
| 14 | 1073292 | V531-491 | SHAFT GUIDE, 531 | 1 |
| | 1071749 | ORE-223 | O-RING, 2-223 | E.P.D.M. 1 BUTYL 2 FKM 2 |
| 15 | 1071780 | ORJ-223 | | |
| | 1071820 | ORV-223 | | |
| 16 | 4510752 | V531-593 | RING, RETAINING, 531 | 1 |
| 17 | 1073273 | V531-080K | NUT, RETAINING, 531 | 2 |

| REPAIR PARTS KITS | | | |
|---|--|---|---|
| DESCRIPTION | PART NO. | | |
| DIAPHRAGM & SEALS KIT CONSISTS OF ITEM NO'S 4, 7, 9, 13, 14 (2), 16 (2) | EPDM 1070318 (531-RAE) INCLUDES DIAPHRAGM 1073277 | BUTYL 1070326 (531-RAJ) INCLUDES DIAPHRAGM 1073277 | FKM 1075228 (531-RAVFB) INCLUDES DIAPHRAGM 1073277 |
| INTERNAL PARTS KIT CONSISTS OF ITEM NO'S 2, 5, 8, 12, 15, 17 | 1070342 (K531-RF) | | |

1070304 (K531-X200-14000)
NORMALLY OPEN (STANDARD)

SEE REVERSE SIDE FOR CONFIGURATION OPTIONS.

THIS DOCUMENT IS SOLELY THE PROPERTY OF AQ-MATIC REPRODUCTION, USE DISCLOSURE, OR TRANSMISSION OF THIS DOCUMENT OR DETAILS CONTAINED HEREIN, IN PART OR IN WHOLE, IS PROHIBITED WITHOUT THE WRITTEN CONSENT OF AQ-MATIC ENGINEERING. THIS DOCUMENT AND ANY COPIES SHALL BE RETURNED TO AQ-MATIC UPON WRITTEN REQUEST.

INTERPRET DIMENSIONS AND TOLERANCES PER ASME Y14.5M -1994

UNLESS OTHERWISE SPECIFIED:
DIMENSIONS ARE IN INCHES (mm)
CORNER FILLETS R.005-020 (127-508)
TOLERANCES:
ANGLES: ± 1°
1 PLACE .X: ± .100 (2.54)
2 PLACE .XX: ± .010 (0.25)
3 PLACE .XXX: ± .005 (0.13)

THE COMPONENT OR PRODUCT DESCRIBED IN THIS DOCUMENT MUST COMPLY WITH RoHS 3 EU (EUROPEAN UNION) DIRECTIVE 2015/863

THIRD ANGLE PROJECTION

APPROVALS: DRAWN PMJ, CHECKED BY, APPROVED

DATE: 6/12/2020

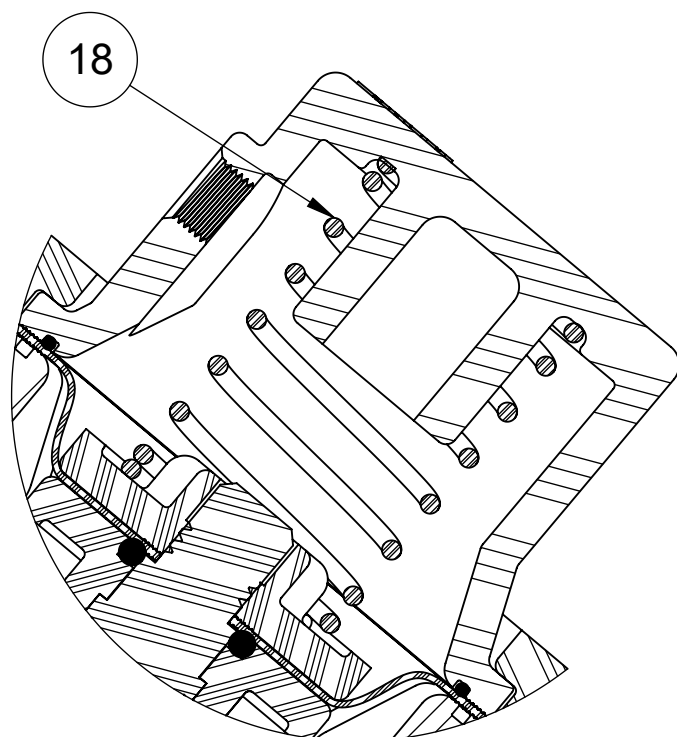
AQ-MATIC VALVES AND CONTROLS

DESCRIPTION: CATALOG SHEET, 531

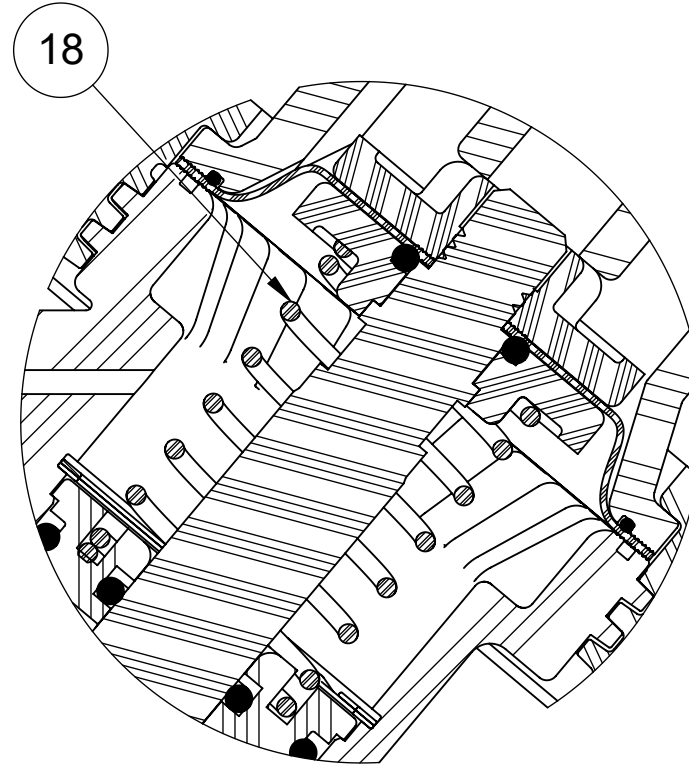
SIZE C, DWG NO. 1077688, REV. P

SCALE 1:1, SOLIDWORKS FORMAT, SHEET 1 OF 2

| REVISIONS | | | | |
|---------------------------------|-----|-------------|------|-------|
| REV | ECN | DESCRIPTION | DATE | APP'D |
| SEE SHEET 1 FOR LIST OF CHANGES | | | | |



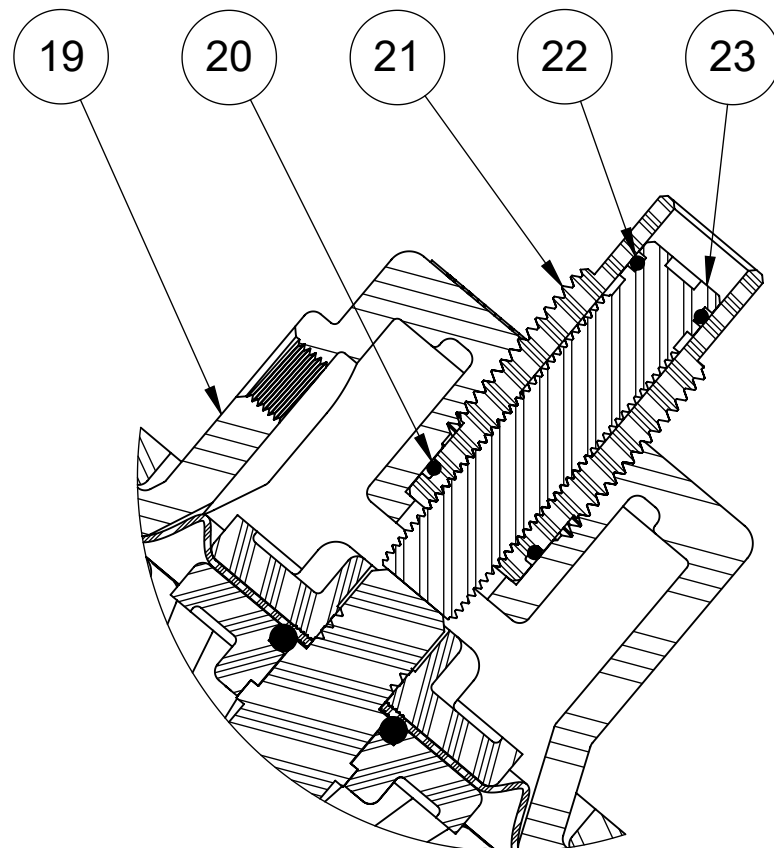
1071286 (K531-X202-14000)
SPRING ASSIST CLOSED



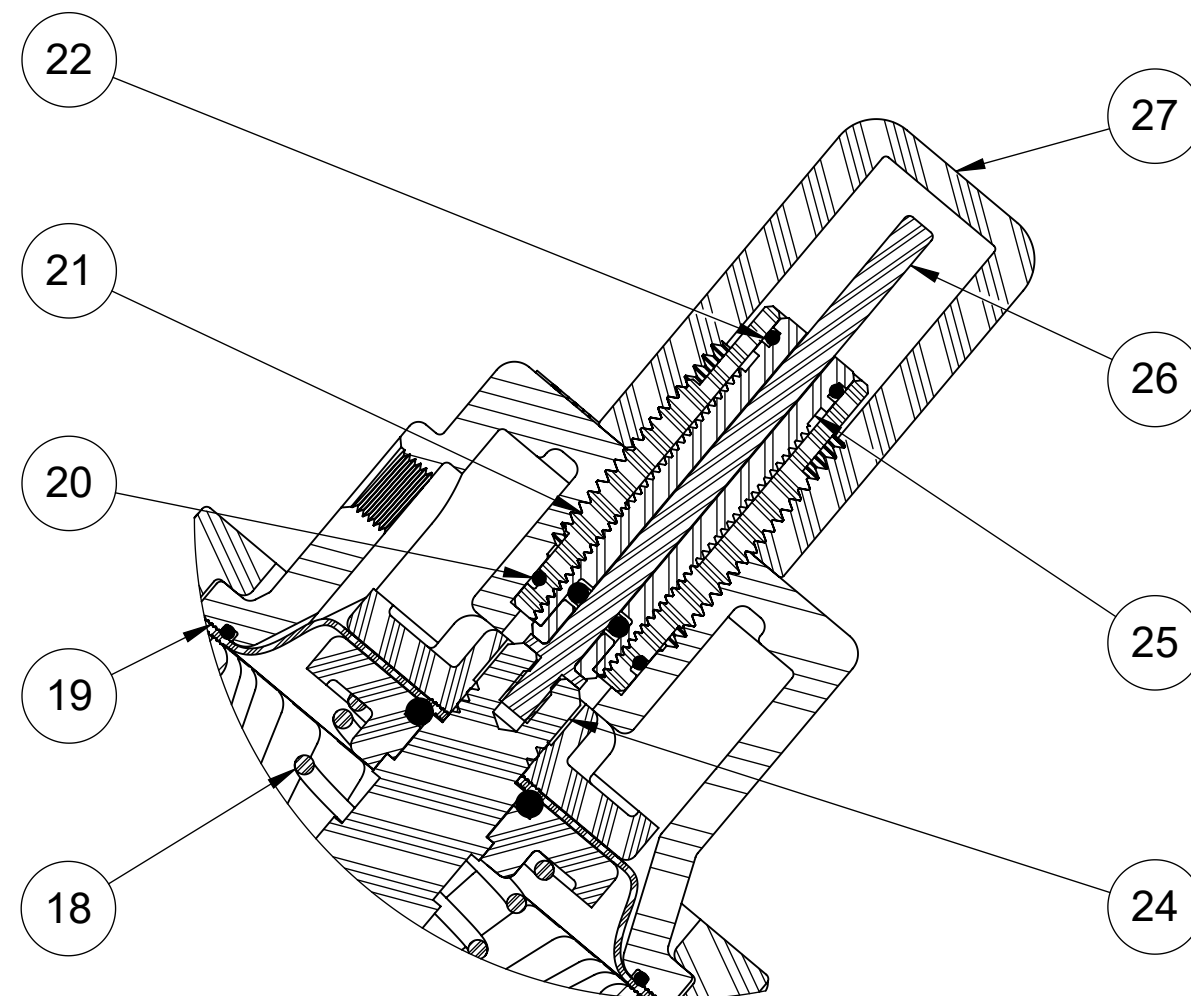
1071282 (K531-X201-14000)
SPRING ASSIST OPEN

| SPRING ASSIST CLOSED & SPRING ASSIST OPEN MODELS | | | | |
|--|----------|----------|---------------------|-----|
| ITEM | PART NO. | MODEL | DESCRIPTION | QTY |
| 18 | 1073283 | V531-170 | SPRING, COMPRESSION | 1 |

| LIMIT STOP MODEL | | | | |
|------------------|----------|-----------|-----------------------------|-----|
| ITEM | PART NO. | MODEL | DESCRIPTION | QTY |
| 19 | 1073288 | V531-421K | CAP, LIMIT STOP / POS. IND. | 1 |
| 20 | 1071671 | ORB-016 | O-RING, 2-016 BUNA N | 1 |
| 21 | 1073303 | V531-570 | GUIDE, LS/PI, 531 | 1 |
| 22 | 1071668 | ORB-012 | O-RING 2-012 BUNA N | 1 |
| 23 | 1073308 | V531-576 | SCREW, LIMIT STOP, 531 | 1 |



1070305 (K531-X210-14000)
LIMIT STOP



1071268 (K531-X2A1-14000)
LIMIT STOP / POSITION INDICATOR
(SPRING ASSIST OPEN SHOWN HERE)

| LIMIT STOP / POSITION INDICATOR MODEL | | | | |
|---------------------------------------|----------|-----------|---------------------------------|-----|
| ITEM | PART NO. | MODEL | DESCRIPTION | QTY |
| 18 | 1073283 | V531-170 | SPRING, COMPRESSION | 1 |
| 19 | 1073288 | V531-421K | CAP, LIMIT STOP / POS. IND. | 1 |
| 20 | 1071671 | ORB-016 | O-RING, 2-016 BUNA N | 1 |
| 21 | 1073303 | V531-570 | GUIDE, LS/PI, 531 | 1 |
| 22 | 1071668 | ORB-012 | O-RING 2-012 BUNA N | 1 |
| 24 | 1073295 | | SHAFT, 531, NORYL, PI, MCHD | 1 |
| 25 | 1073315 | V531-700 | SCREW, LIMIT STOP, ASSY., 537 | 1 |
| 26 | 1073298 | V531-555 | ROD, PI, 531 | 1 |
| 27 | 1073297 | V531-550 | SIGHT GLASS, POS INDICATOR, 531 | 1 |

| REPAIR PARTS KITS | |
|--|------------------|
| DESCRIPTION | PART NO. |
| INT. PARTS KIT (SPRING ASSIST CLOSED) CONSISTS OF ITEM NO. 18 | 1075229 (531-S) |
| INT. PARTS KIT (SPRING ASSIST OPEN) CONSISTS OF ITEM NO. 18 | |
| INT. PARTS KIT (LIMIT STOP) CONSISTS OF ITEM NO'S 20 THRU 23 | 1075226 (531-LS) |
| INT. PARTS KIT (LIMIT STOP / POS INDICATOR) CONSISTS OF ITEM NO'S 22, 24, 25, 26, 27 | 1075227 (531-PI) |

| CONVERSION KITS | |
|---|--------------------|
| DESCRIPTION | PART NO. |
| CONVERSION KIT (SPRING ASSIST CLOSED) CONSISTS OF ITEM NO. 18 | 1075229 (531-S) |
| CONVERSION KIT (SPRING ASSIST OPEN) CONSISTS OF ITEM NO. 18 | |
| CONVERSION KIT (LIMIT STOP) CONSISTS OF ITEM NO'S 19 THRU 23 | 1071265 (K531-LSC) |
| CONVERSION KIT (LIMIT STOP / POS INDICATOR) CONSISTS OF ITEM NO'S 19 THRU 22 AND 24 THRU 27 | 1071266 (K531-PIC) |

SEE SHEET 1 FOR STANDARD NORMALLY OPEN MODEL

THIS DOCUMENT IS SOLELY THE PROPERTY OF AQ-MATIC REPRODUCTION, USE DISCLOSURE, OR TRANSMISSION OF THIS DOCUMENT OR DETAILS CONTAINED HEREIN, IN PART OR IN WHOLE, IS PROHIBITED WITHOUT THE WRITTEN CONSENT OF AQ-MATIC ENGINEERING. THIS DOCUMENT AND ANY COPIES SHALL BE RETURNED TO AQ-MATIC UPON WRITTEN REQUEST.

INTERPRET DIMENSIONS AND TOLERANCES PER ASME Y14.5M -1994

UNLESS OTHERWISE SPECIFIED: DIMENSIONS ARE IN INCHES (mm) CORNER FILLETS R.005-.020 (.127-.508) TOLERANCES: ANGLES: ±1° 1 PLACE .X: ±.100 (2.54) 2 PLACE .XX: ±.010 (0.25) 3 PLACE .XXX: ±.005 (0.13)

THE COMPONENT OR PRODUCT DESCRIBED IN THIS DOCUMENT MUST COMPLY WITH RoHS 3 EU (EUROPEAN UNION) DIRECTIVE 2015/863

THIRD ANGLE PROJECTION

APPROVALS: DATE: 6/12/2020

DRAWN: PMJ

CHECKED BY:

APPROVED:

AQ-Matic AQ-MATIC VALVES AND CONTROLS

DESCRIPTION: CATALOG SHEET, 531

SIZE: C DWG NO.: 1077688 REV.: P

SCALE: 1:2 SOLIDWORKS FORMAT SHEET 2 OF 2