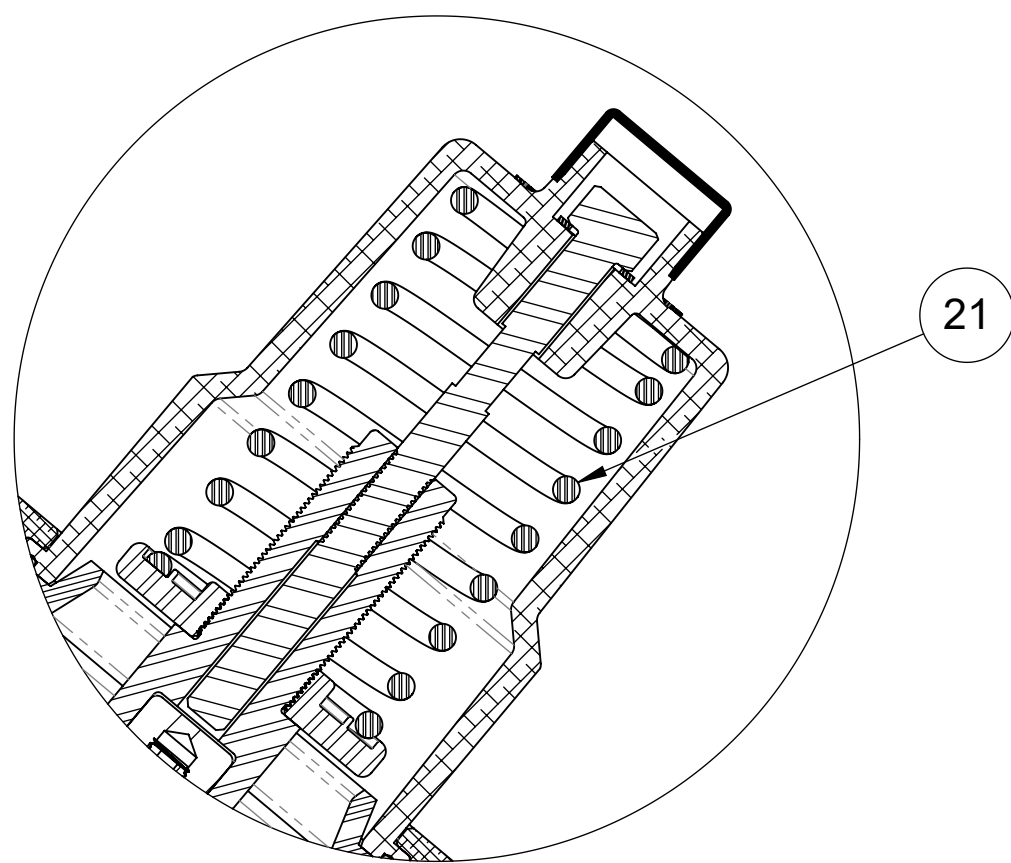
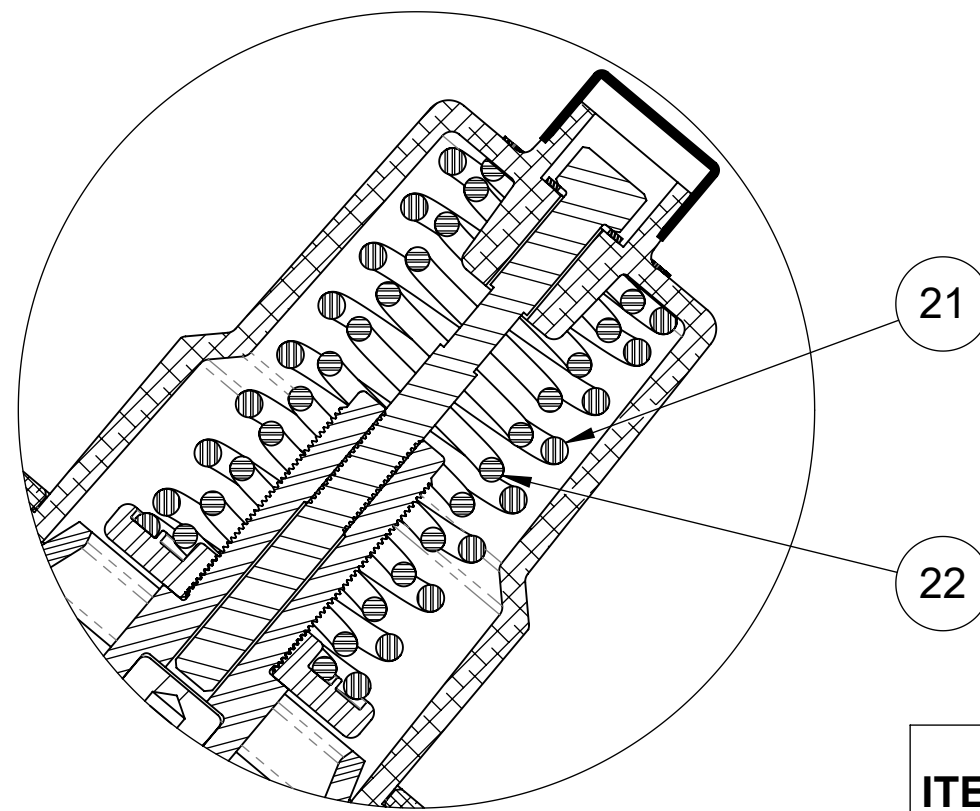


REVISIONS				
REV	ECN	DESCRIPTION	DATE	APP'D
E		REDRAWN IN SOLIDWORKS: 1-ADD'D:BR1071745: 2-REM'D:BR1071483	5/18/2010	MHM
F		1-ADD'D:43307	10/21/2011	TMS
G	1001	AQ MATIC UPDATE & VERIFIED PART NUMBERS	1/27/2017	MGS
H	1845	REDRAWN IN NEW TEMPLATE, ADD'D MODEL NO'S	2/22/2021	PMJ
J	1857	REPAIR KIT INSTRUCTIONS ADDED	3/4/2021	PMJ
K	2226	REV. UPDATE ERROR CORRECTION	5/8/2023	TRK

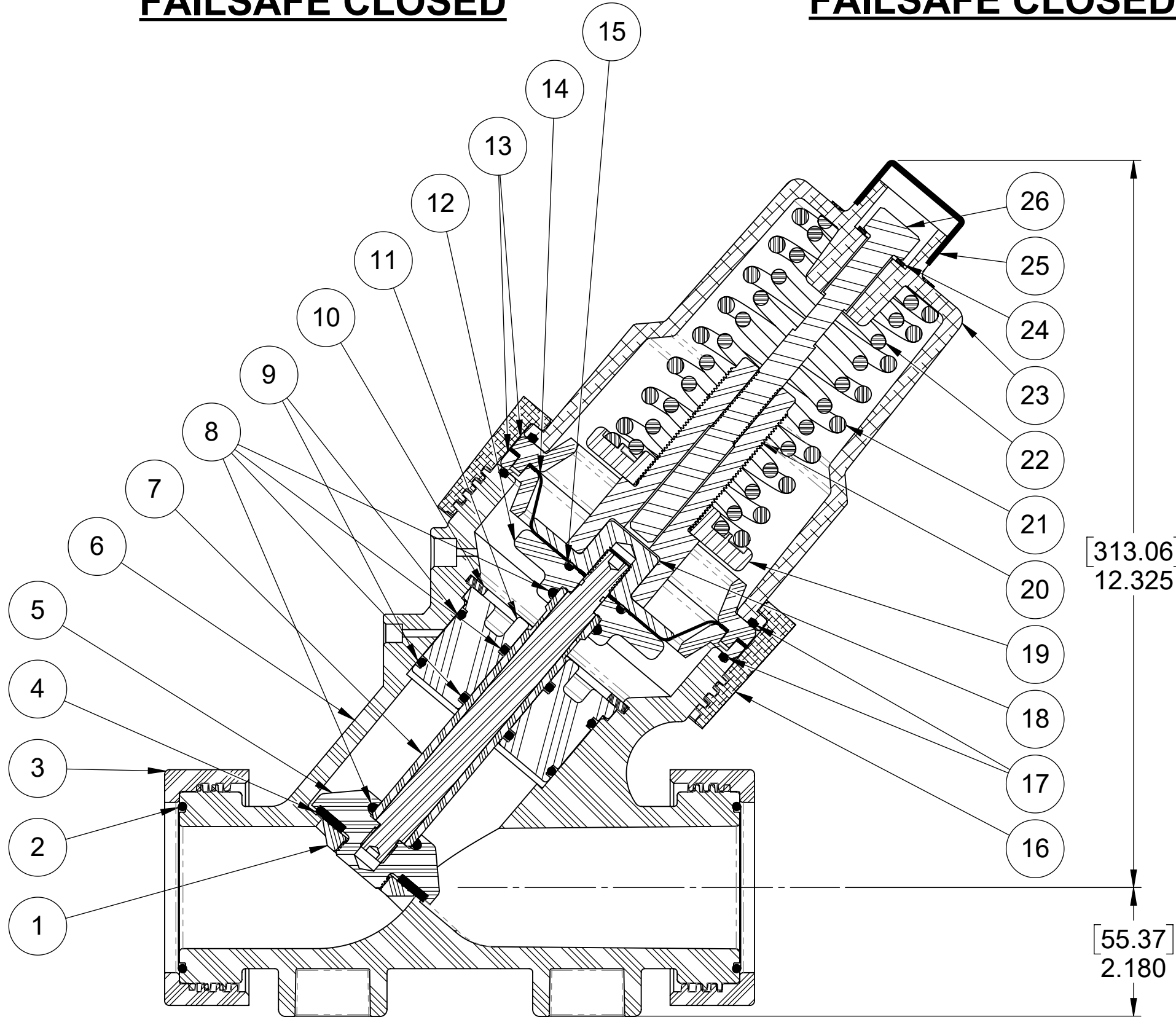
NOTE:  
REPLACEMENT COMPONENTS UNIQUE TO FAILSAFE DESIGN ARE AVAILABLE AS A REPAIR KIT ONLY. SEE SHEET 2 FOR KIT DETAILS.



1076665 (K535-X203-14000)  
(30 PSI - 2 BAR)  
**FAILSAFE CLOSED**



1071368 (K535-X204-14000)  
(60 PSI - 4 BAR)  
**FAILSAFE CLOSED**



1071371 (K535-X205-14000) (100 PSI - 7BAR)  
**FAILSAFE CLOSED**

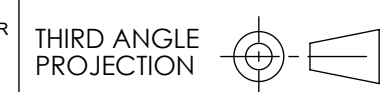
ITEM NO.	PART NO.	DESCRIPTION	1076665 30 PSI QTY.	1071368 60 PSI QTY.	1071371 100 PSI QTY.
1	1073396	V535-093		1	
2	1071752	ORE-231		2	
3	1073395	V535-080K		2	
4	1073401	V535-110		1	
5	1073416	V535-500		1	
6	1073407	V535-410K		1	
7	1073439	V535-702		1	
8	1071745	ORE-212		4	
9	1071753	ORE-232		2	
10	1073434	V535-593		1	
11	1073413	V535-491		1	
12	1073412	V535-448	PLATE, DIAPHRAGM, LWR, FS, 535	1	
13	1073425	V535-551K	SUPPORT, DIAPHRAGM, 535	2	
14	1073399	V535-100	DIAPHRAGM, K535	1	
15	1076766	ORB-214	O-RING, 2-214	1	
16	43307		NUT, FS, 535	1	
17	1071712	ORB-248	O-RING, 2-248	2	
18	1073411	V535-444	PLATE, DIAPHRAGM, UPR, FS, 535	1	
19	1073436	V535-597	RING, SPRG RETAINER, 535	1	
20	1073435	V535-596	BASE, SPRING RETAINER	1	
21	1073405	V535-171	SPRING, COMPRESSION	1	
22	1073406	V535-172	SPRING, COMPRESSION	-	1
23	1073415	V535-495K	CAP, FS, 535	1	
24	1073596	WAS-0025	WASHER, 1.00 X .686 X .06	1	
25	1071483		CAP PLUG, 1-1/2 X 1"	1	
26	1073433	V535-592	SCREW, FS, 535	1	

THE COMPONENT OR PRODUCT DESCRIBED IN THIS DOCUMENT MUST COMPLY WITH RoHS 3 EU (EUROPEAN UNION) DIRECTIVE 2015/863

THIS DOCUMENT IS SOLELY THE PROPERTY OF AQ-MATIC REPRODUCTION, USE DISCLOSURE, OR TRANSMISSION OF THIS DOCUMENT OR DETAILS CONTAINED HEREIN, IN PART OR IN WHOLE, IS PROHIBITED WITHOUT THE WRITTEN CONSENT OF AQ-MATIC ENGINEERING. THIS DOCUMENT AND ANY COPIES SHALL BE RETURNED TO AQ-MATIC UPON WRITTEN REQUEST.

INTERPRET DIMENSIONS AND TOLERANCES PER ASME Y14.5M -1994

UNLESS OTHERWISE SPECIFIED:  
DIMENSIONS ARE IN INCHES (mm)  
CORNER FILLETS R.005-.020 [127-508]  
TOLERANCES:  
ANGLES: ±1°  
1 PLACE .X: ±.100 [2.54]  
2 PLACE .XX: ±.010 [0.25]  
3 PLACE .XXX: ±.005 [0.13]



APPROVALS	DATE
DRAWN PMJ	2/19/2021
CHECKED BY	
APPROVED	



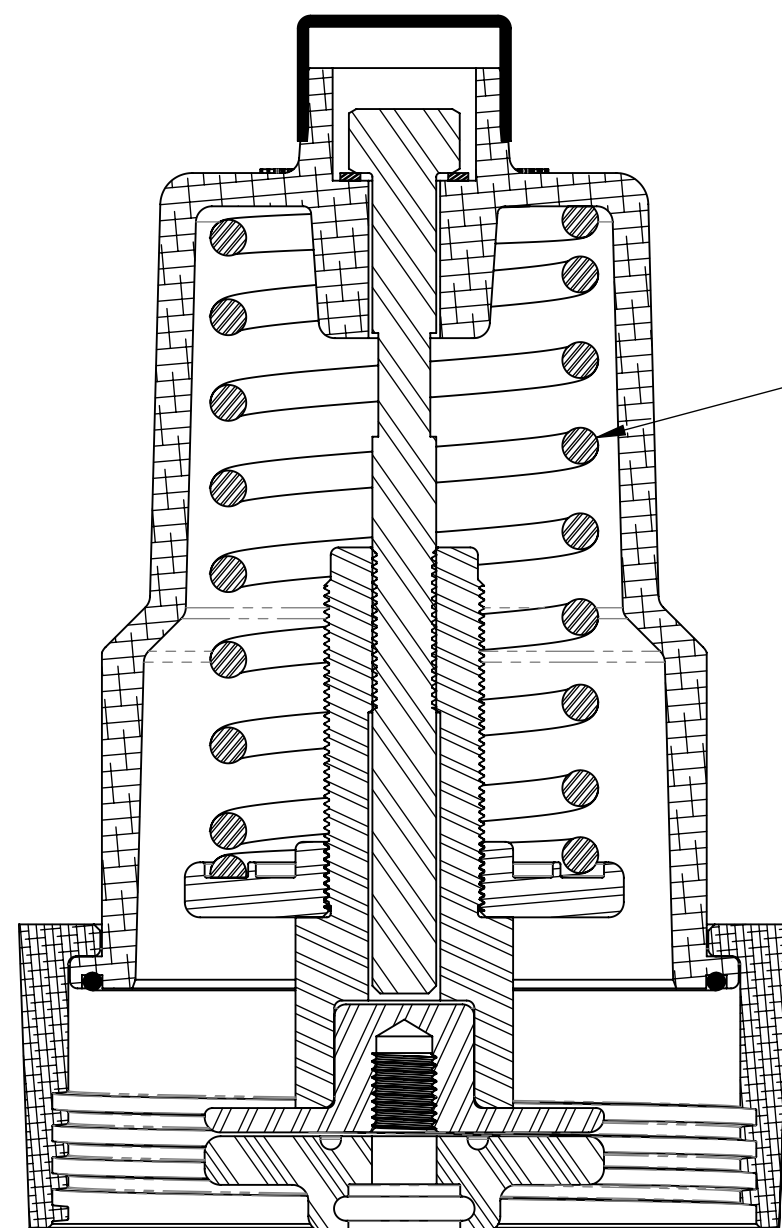
DESCRIPTION CATALOG SHEET 535 FAILSAFE VALVE		REV. K
SIZE C	DWG NO. 1084011	
SCALE 1:2	SOLIDWORKS FORMAT	SHEET 1 OF 2

REVISIONS				
REV	ECN	DESCRIPTION	DATE	APP'D
SEE SHEET 1 FOR REVISION HISTORY				

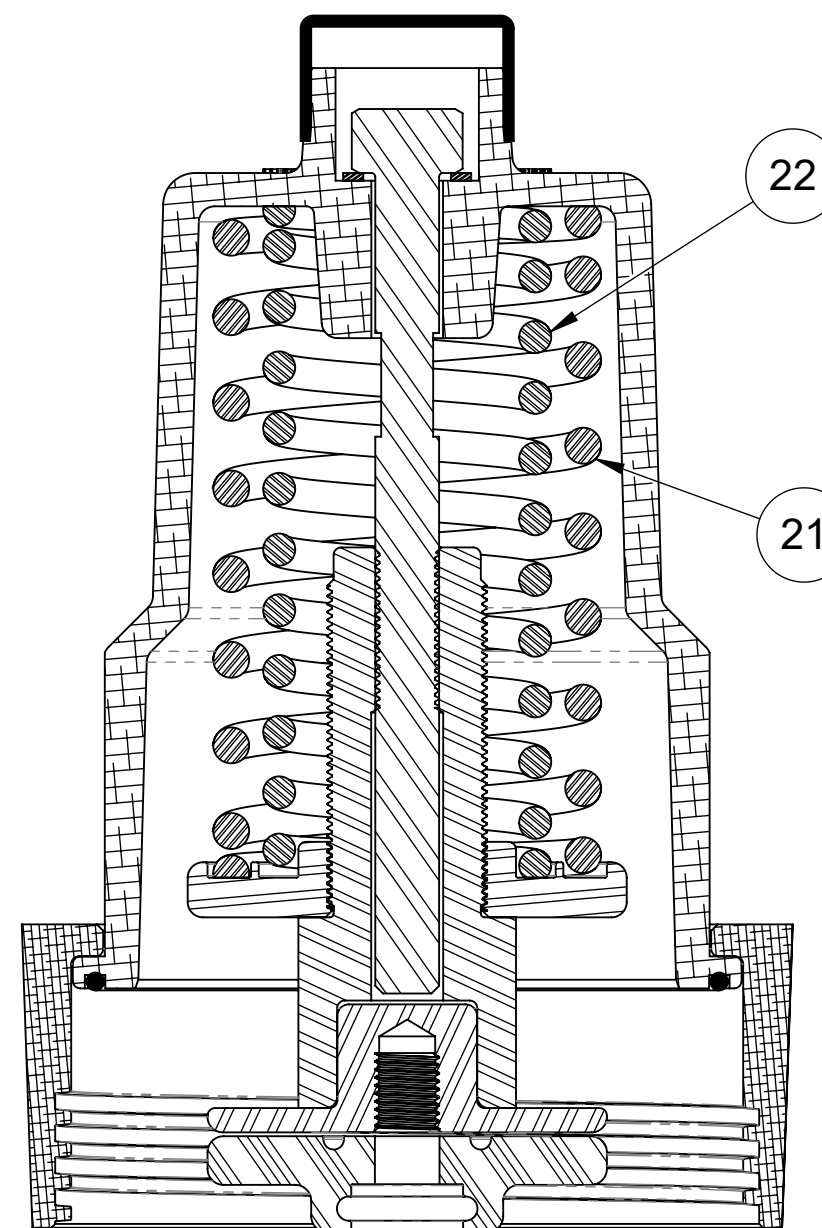
REPAIR KITS					
ITEM NO.	PART NO.	DESCRIPTION	1071341 30 LBS. QTY.	1071342 60 LBS. QTY.	1071340 100 LBS. QTY.
14	1073412 V535-448	PLATE, DIAPHRAGM, LWR, FS, 535		1	
15	43307	NUT, FS, 535		1	
16	1071712 ORB-248	O-RING, 2-248		1	
17	1073411 V535-444	PLATE, DIAPHRAGM, UPR, FS, 535		1	
18	1073436 V535-597	RING, SPRG RETAINER, 535		1	
19	1073435 V535-596	BASE, SPRING RETAINER		1	
20	1073405 V535-171	SPRING, COMPRESSION		1	
21	1073406 V535-172	SPRING, COMPRESSION	-	1	
22	1073415 V535-495K	CAP, FS, 535		1	
23	1073596 WAS-0025	WASHER, 1.00 X .686 X .06		1	
24	1071483	CAP PLUG, 1-1/2 X 1"		1	
25	1073433 V535-592	SCREW, FS, 535		1	

CAP REPLACEMENT INSTRUCTIONS:

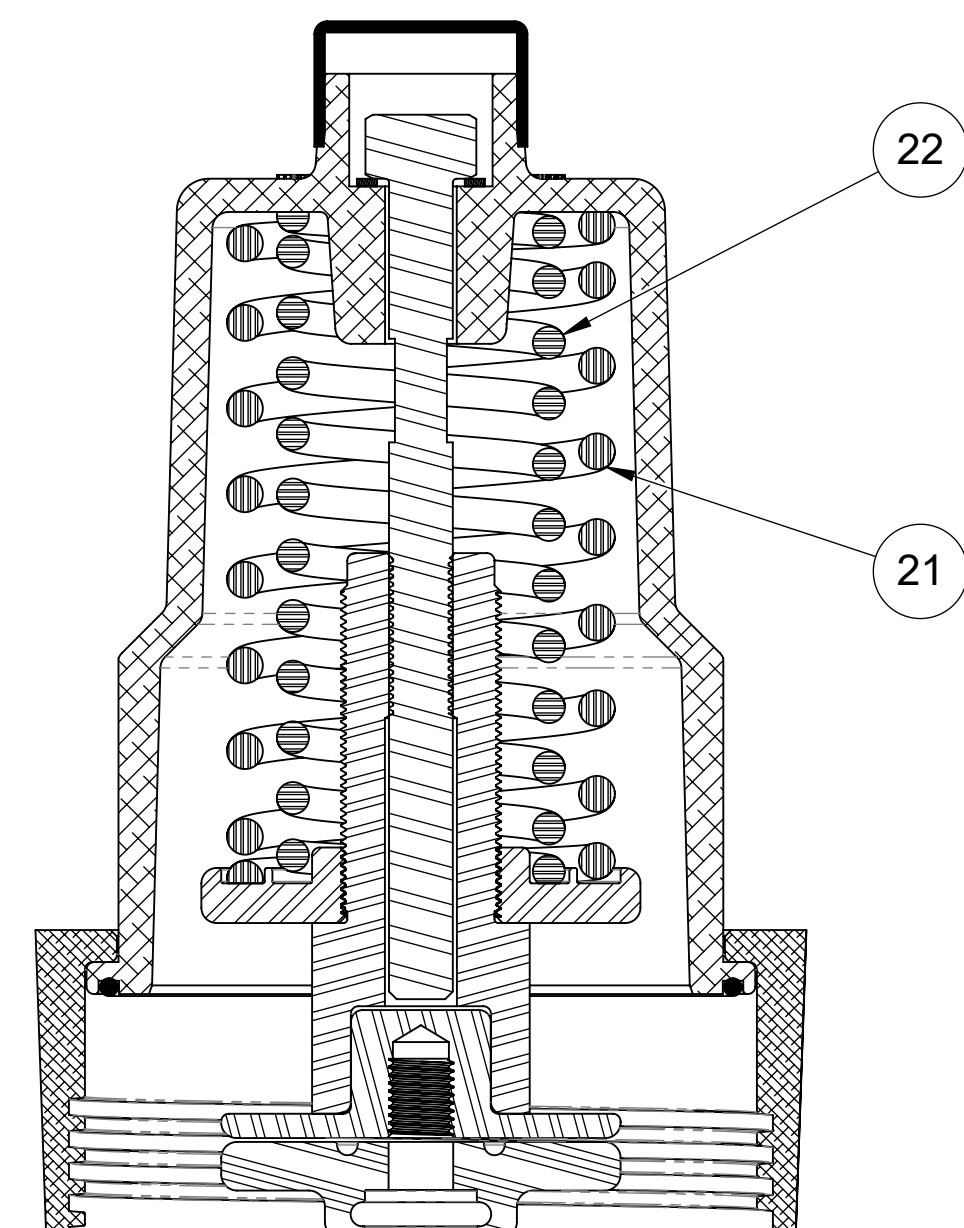
1. TURN SCREW (25) OF OLD CAP CLOCKWISE UNTIL SPRINGS ARE FULLY COMPRESSED.
2. UNSCREW CAP NUT (15) AND REMOVE OLD CAP ASSEMBLY.
3. PLACE O-RING (16) INTO BOTTOM GROOVE IN CAP ASSEMBLY.
4. PLACE NEW CAP ASSEMBLY ON VALVE AND TIGHTEN CAP NUT (15).
5. TURN SCREW (25) OF NEW CAP COUNTERCLOCKWISE UNTIL CONTACT IS MADE WITH UPPER DIAPHRAGM PLATE (17) WHILE IN CLOSED POSITION.



1071341 (K535-FS3) REPAIR KIT - 30 LBS.



1071342 (K535-FS6) REPAIR KIT - 60 LBS.



1071340 (K535-FS1) REPAIR KIT - 100 LBS.

VALVE SERIES	30 LBS. FAILSAFE # TURNS UP FROM BOTTOM	60 LBS. FAILSAFE # TURNS UP FROM BOTTOM	100 LBS. FAILSAFE # TURNS UP FROM BOTTOM
535	6	0	12

NOTES:  
1. REPAIR KIT IS TO BE SHIPPED TO CUSTOMER IN A FULLY COMPRESSED STATE.

THIS DOCUMENT IS SOLELY THE PROPERTY OF AQ-MATIC REPRODUCTION, USE DISCLOSURE, OR TRANSMISSION OF THIS DOCUMENT OR DETAILS CONTAINED HEREIN, IN PART OR IN WHOLE, IS PROHIBITED WITHOUT THE WRITTEN CONSENT OF AQ-MATIC ENGINEERING. THIS DOCUMENT AND ANY COPIES SHALL BE RETURNED TO AQ-MATIC UPON WRITTEN REQUEST.

INTERPRET DIMENSIONS AND TOLERANCES PER ASME Y14.5M -1994

UNLESS OTHERWISE SPECIFIED:  
DIMENSIONS ARE IN INCHES [mm]  
CORNER FILLETS R.005-.020 [127-508]  
TOLERANCES:  
ANGLES : ± 1°  
1 PLACE .X: ± .100 [2.54]  
2 PLACE .XX: ± .010 [0.25]  
3 PLACE .XXX: ± .005 [0.13]

THE COMPONENT OR PRODUCT DESCRIBED IN THIS DOCUMENT MUST COMPLY WITH RoHS 3 EU (EUROPEAN UNION) DIRECTIVE 2015/863				
THIRD ANGLE PROJECTION				
APPROVALS	DATE	DESCRIPTION		
DRAWN PMJ	2/19/2021	535 FAILSAFE VALVE		
CHECKED BY		SIZE C	DWG NO. 1084011	REV. K
APPROVED		SCALE 2:3	SOLIDWORKS FORMAT	SHEET 2 OF 2